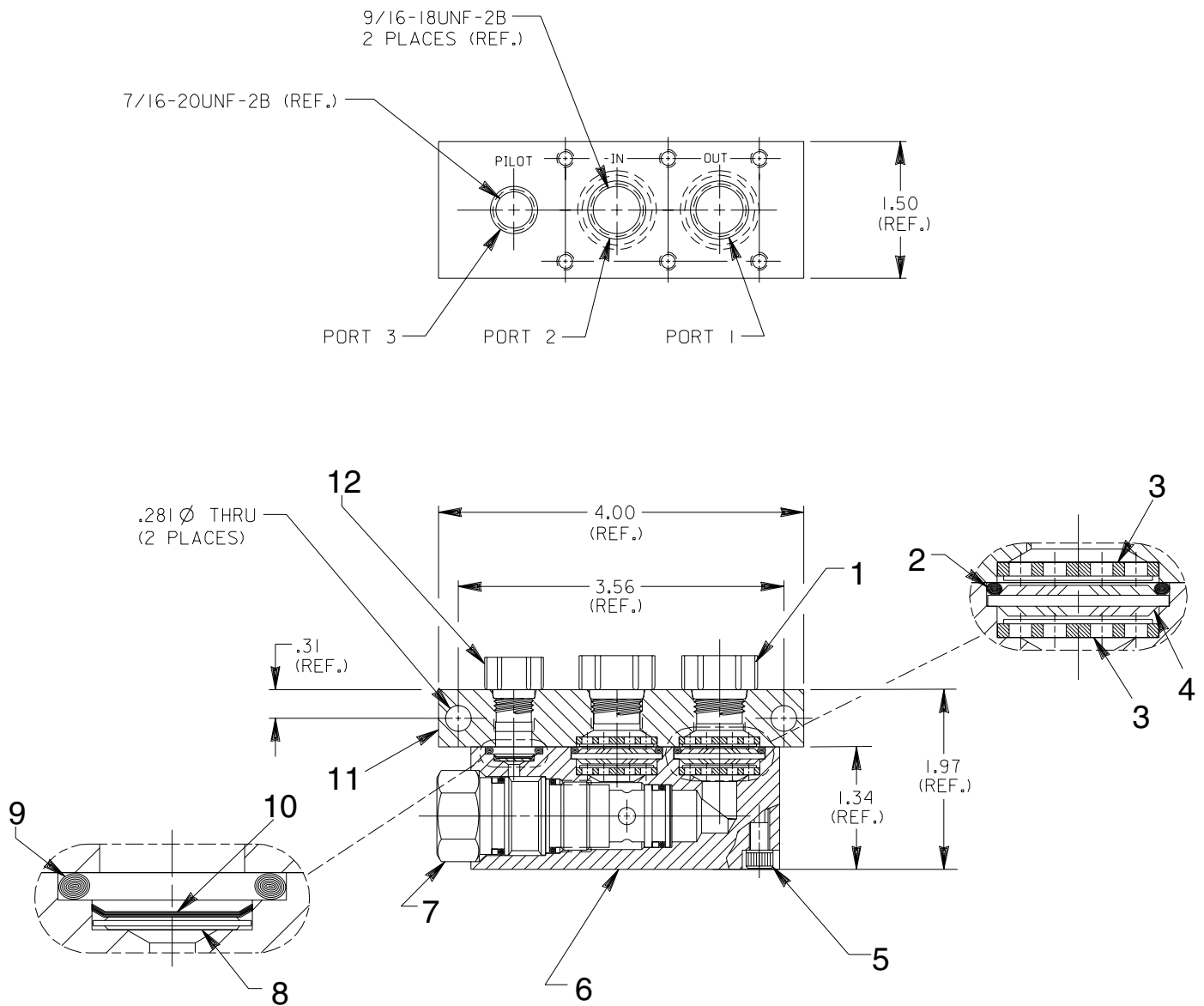


**PILOT OPERATED
CHECK VALVE**

Max. Capacity: 3,000 PSI (for 100856); 5,000 PSI (for 100915)
Ratio 3:1

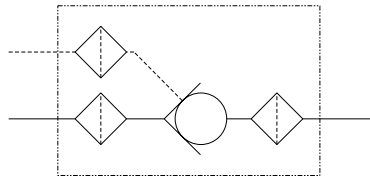


Note: Shaded areas reflect last revision(s) made to this form.

Item No.	Part No.	No. Req'd	Description
1	250962	2	Plug Fitting
2	10658	2	O-ring (1" X 13/16 X 3/32, -117)
3	†*250937	4	Support Disc
4	*250935	2	Pleated Filter Element
5	12650	6	Cap Screw (#10-24 UNC X 1-1/2 Lg.; Torque to 60-70 in. lbs.)
6	420444	1	Check Valve Body
7	250938	1	Pilot Operated Check Valve (For 100856; Torque to 30/35 ft. lbs.)
	251826	1	Pilot Operated Check Valve (For 100915; Torque to 30/35 ft. lbs.)
8	250936	1	Filter Disc
9	10270	1	O-ring (5/8 x 7/16 x 3/32, -111)
10	11893	1	Retaining Ring (7/16 hole)
11	420445	1	Mounting Block
12	250961	1	Plug Fitting

*NOTE: These parts must have interference fit when assembled.
 †Assemble with mesh side toward filter disk.

HYDRAULIC SCHEMATIC



Note: Shaded areas reflect last revision(s) made to this form.