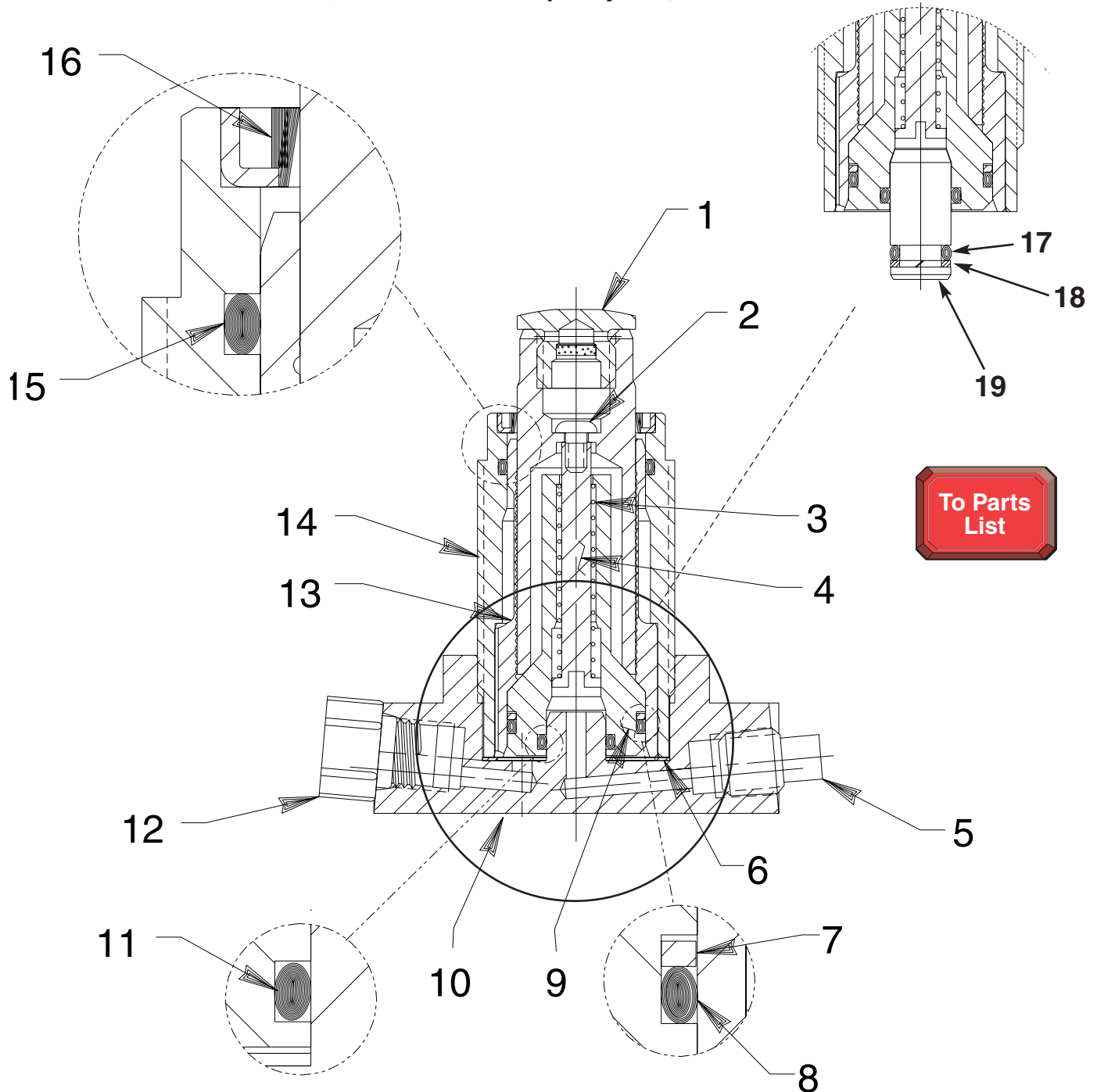


**AIR ADVANCE
HYDRAULIC WORK SUPPORT**

1,100 Lbs. Load Capacity at 5,000 PSI

For 100876 only

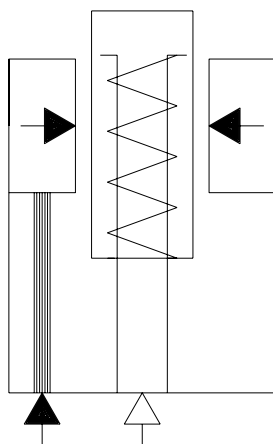


Item No.	Part No.	No. Req'd	Description
1	251397	1	Vented Button Assembly
2	251242	1	Cap Screw (6-32 UNC x 5/8 Lg.; Apply Loctite 271 or equivalent.)
3	251243	1	Compression Spring (1/4 O.D. x 2.787 Lg.)
4	251249	1	Spring Retainer
5	11048	1	Pressure Plug (For 100877 only)
6	*251248	1	Backup Washer (1-3/16 x 1" x .048, -120)
7	*251247	1	Backup Washer (7/8 x 3/4 x .048, -018)
8	*251246	1	O-ring (7/8 x 3/4 x 1/16, -018)
9	350734	1	Spring Retainer Adapter
10	500036	1	Mounting Base (For 100877 only)
11	*10268	1	O-ring (1/2 x 3/8 x 1/16, -012)
12	250961	1	Plug (For 100877 only)
13	420706	1	Work Support Sleeve & Plunger
14	420705	1	Work Support Body (Torque to 85/95 ft. lbs.)
15	*12900	1	O-ring (1" x 7/8 x 1/16, -020)
16	*251254	1	Wiper Seal
17	10266	1	O-ring (3/8 X 1/4 X 1/16, -010, For 100876 only)
18	12184	1	Backup Washer (3/8 X 1/4 X .048, -010; For 100876 only)
19	350781	1	Bushing (For 100876 only)

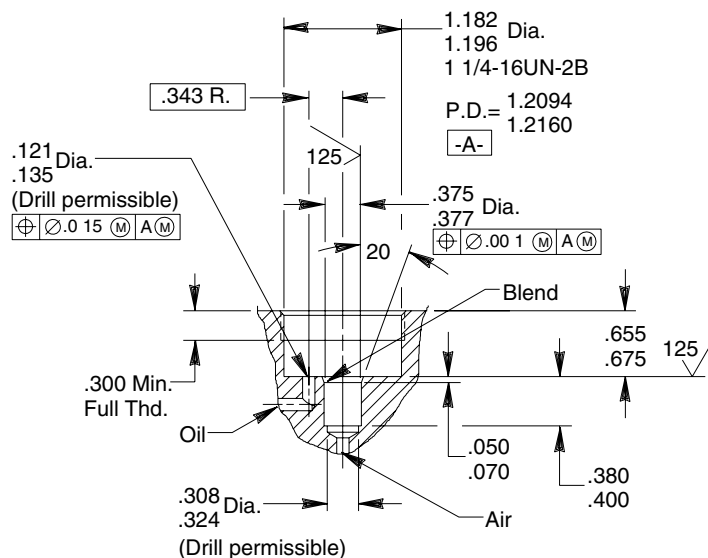


Part numbers marked with an asterisk (*) are contained in Repair Kit No. 300654.

HYDRAULIC SCHEMATIC



MANIFOLD MOUNT CAVITY DIMENSIONS



Refer to any operating instructions included with this product for detailed information about operation, testing, disassembly, reassembly, and preventive maintenance.

Items found in this parts list have been carefully tested and selected. **Therefore: Use only genuine Power Team replacement parts!**

Additional questions can be directed to our Technical Services Department.

Note: Shaded areas reflect last revision(s) made to this form.