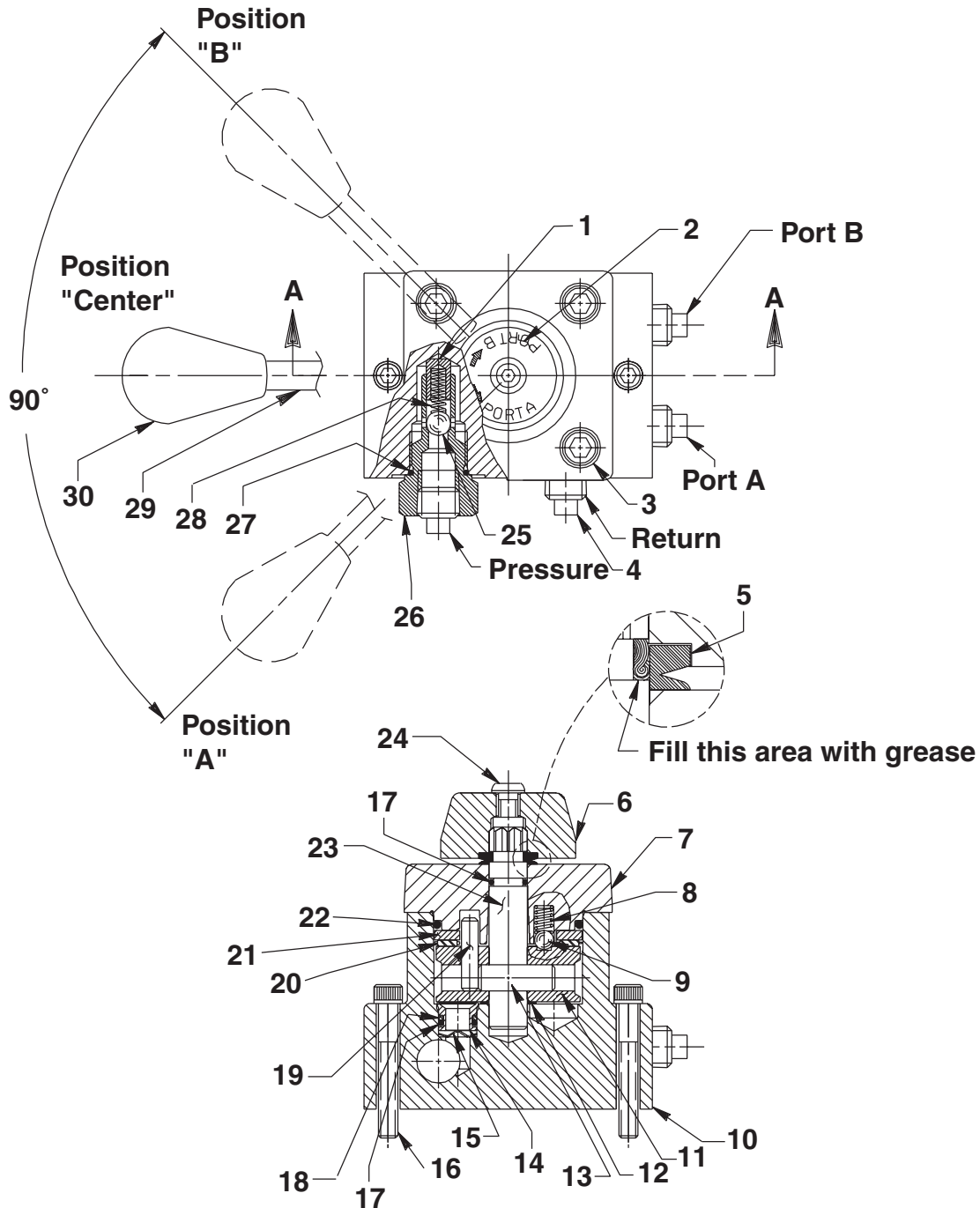


**MODEL B
4-WAY, THREE POSITION
MANUAL VALVE ASSEMBLY**



SECTION A-A

Sheet No.	1 of 2
Issue Date:	Rev. 2-10-96

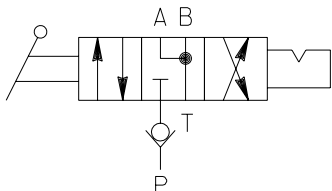
Parts List, Form No. 101441, Back sheet 1 of 2

Item No.	Part No.	No. Req'd	Description	Item No.	Part No.	No. Req'd	Description
1	201813	1	Ball Stop	18	*11863	3	Backup Washer (1/2 X 3/8 X 1/16, -012)
2	211936	1	Decal	19	250056	1	Pin
3	11013	4	Cap Screw (5/16-18 X 1" Lg.; Torque to 300/320 in. lbs.)	20	11228	1	Thrust Bearing
4	10970	4	Pipe Plug (1/4 NPTF)	21	11227-1	1	Bearing Race
5	*213674	1	Packing	22	*15892	1	O-ring (1.956 X 1.720 X .118, -924; Nitrile)
6	46057	1	End Stem		19097	1	O-ring (1.956 X 1.720 X .118, -924; Viton)
7	61343	1	Valve Cap		212887	1	O-ring (1.956 X 1.720 X .118, -924; EPR)
8	15691	1	Compression Spring (1/4 O.D. X 5/8 Lg.)	23	46048	1	Stem
9	10375	1	Steel Ball (1/4 Dia.)	24	15911	1	Cap Screw (1/4-20 X 5/8 Lg.; Torque to 60/80 in. lbs. Note: Apply Loctite No. 222 or equiv. at assembly.)
10	61290	1	Valve Body	25	10377	1	Steel Ball (5/16 Dia.)
11	420246	1	Rotor	26	36414	1	Check Valve Body
12	214801	1	Spacer Washer	27	*10527	1	O-ring (13/16 X .644 X .087, -908)
13	10496	1	Pin	28	15141	1	Compression Spring (3/16 O.D. X 5/8 Lg.)
14	202480	3	Seal	29	21639	1	Stud
15	21975	3	Spring Washer	30	211911	1	Plastic Knob
16	10854	2	Cap Screw (1/4-20UNC X 1-3/4Lg.)				
17	*10268	4	O-ring (1/2 X 3/8 X 1/16, -012; Nitrile)				
	11439	4	O-ring (1/2 X 3/8 X 1/16, -012; Viton)				
	17716	4	O-ring (1/2 X 3/8 X 1/16, -012; EPR)				

Part numbers marked with an asterisk (*) are contained in Repair Kit No. 300451.

Note: Alternate material seals listed for special valves factory equipped with viton or EPR seals.

SPECIFICATIONS



HYDRAULIC SCHEMATIC

Valve, remote mounted manual detented
4-way, 3-position float center

Rated Pressure: 5,000 PSI
Case Pressure: 500 PSI Max.
Rated Flow: 5 GPM

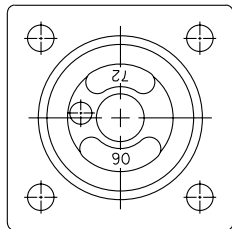
Function:

"Center" position:
Pressure is blocked
"A" & "B" ports to tank.

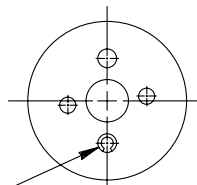
"A" position:
Pressure to "A" port
"B" port to tank.

"B" position:
Pressure to "B" port
"A" port to tank.

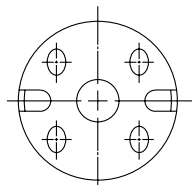
INTERNAL ASSEMBLY ORIENTATION OF PARTS



END CAP
BOTTOM VIEW

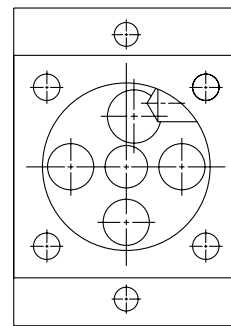


ROTOR
TOP VIEW



ROTOR
BOTTOM VIEW

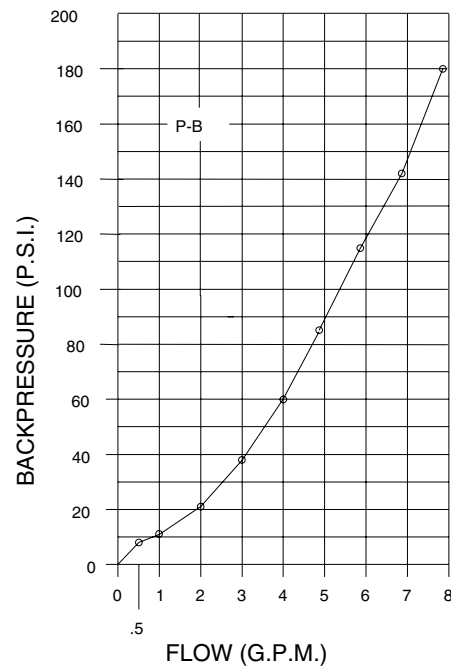
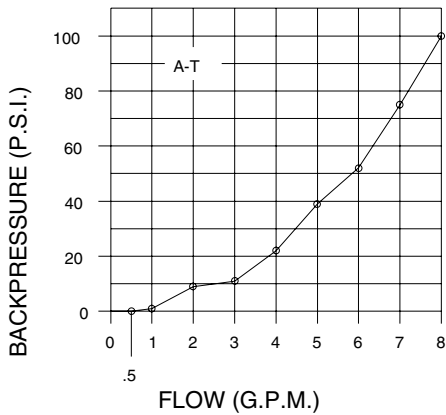
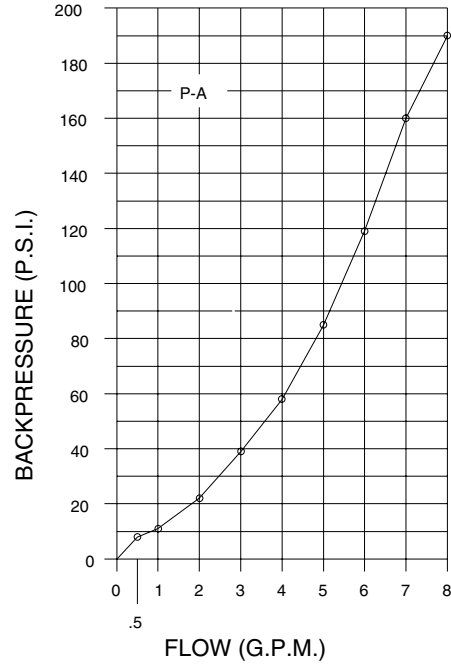
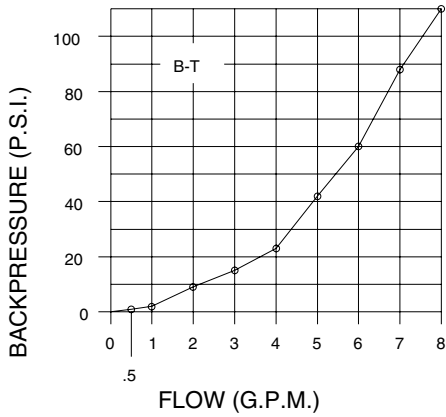
ROLL PIN LOCATION
(POSITION OPENING AS SHOWN)



VALVE BODY
TOP VIEW

Note: Shaded areas reflect last revision(s) made to this form.

PRESSURE DROP AND FLOW CHARACTERISTICS



Refer to any operating instructions included with this product for detailed information about operation, testing, disassembly, reassembly, and preventive maintenance.

Items found in this parts list have been carefully tested and selected. **Therefore: Use genuine only Hytec replacement parts!**

Additional questions can be directed to our Technical Services Department.