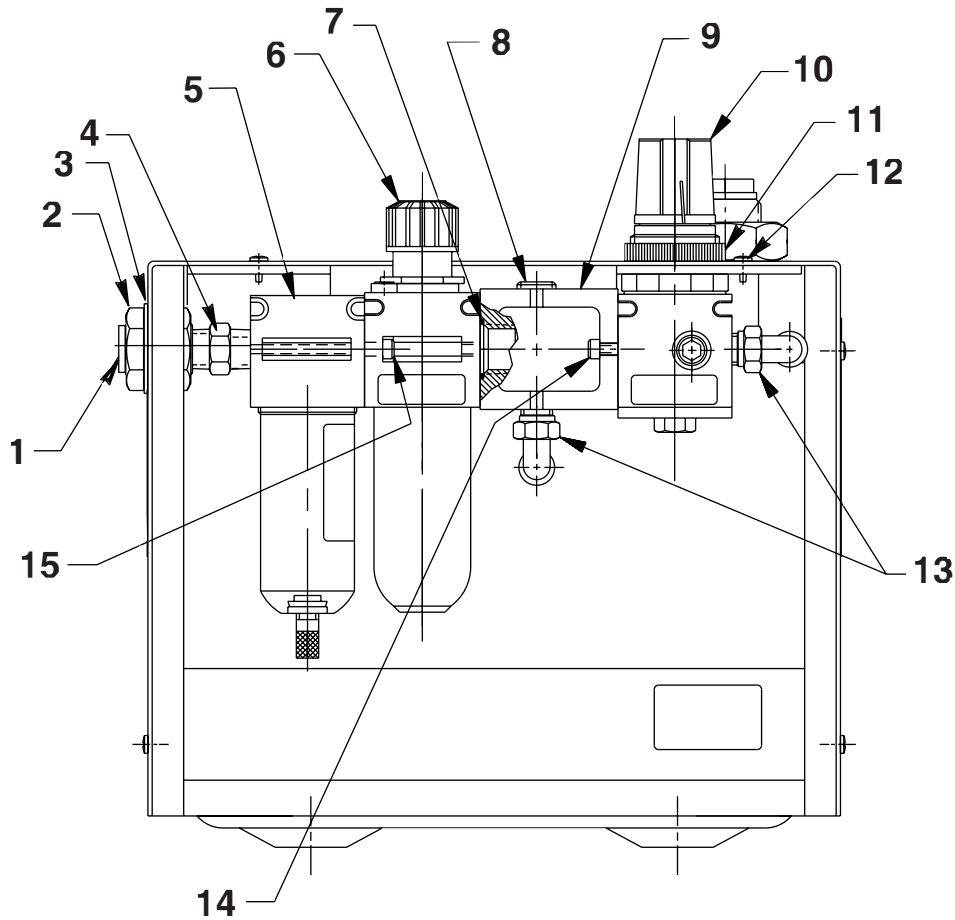


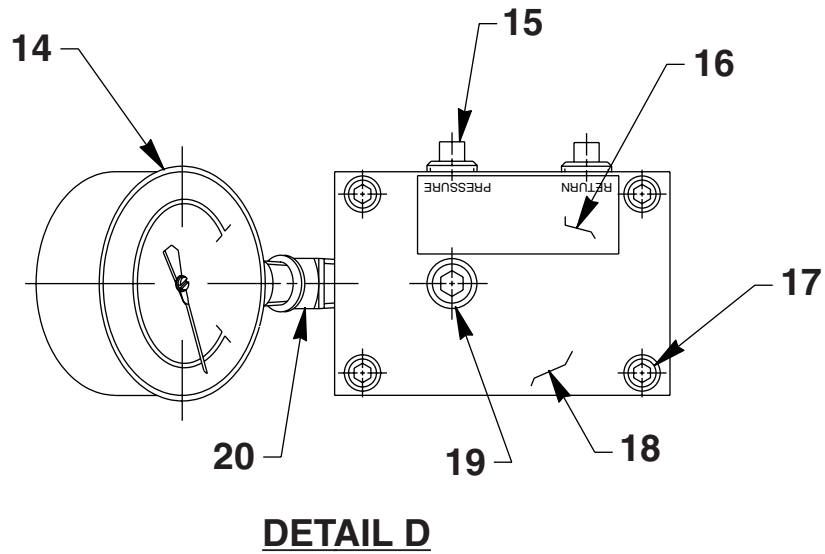
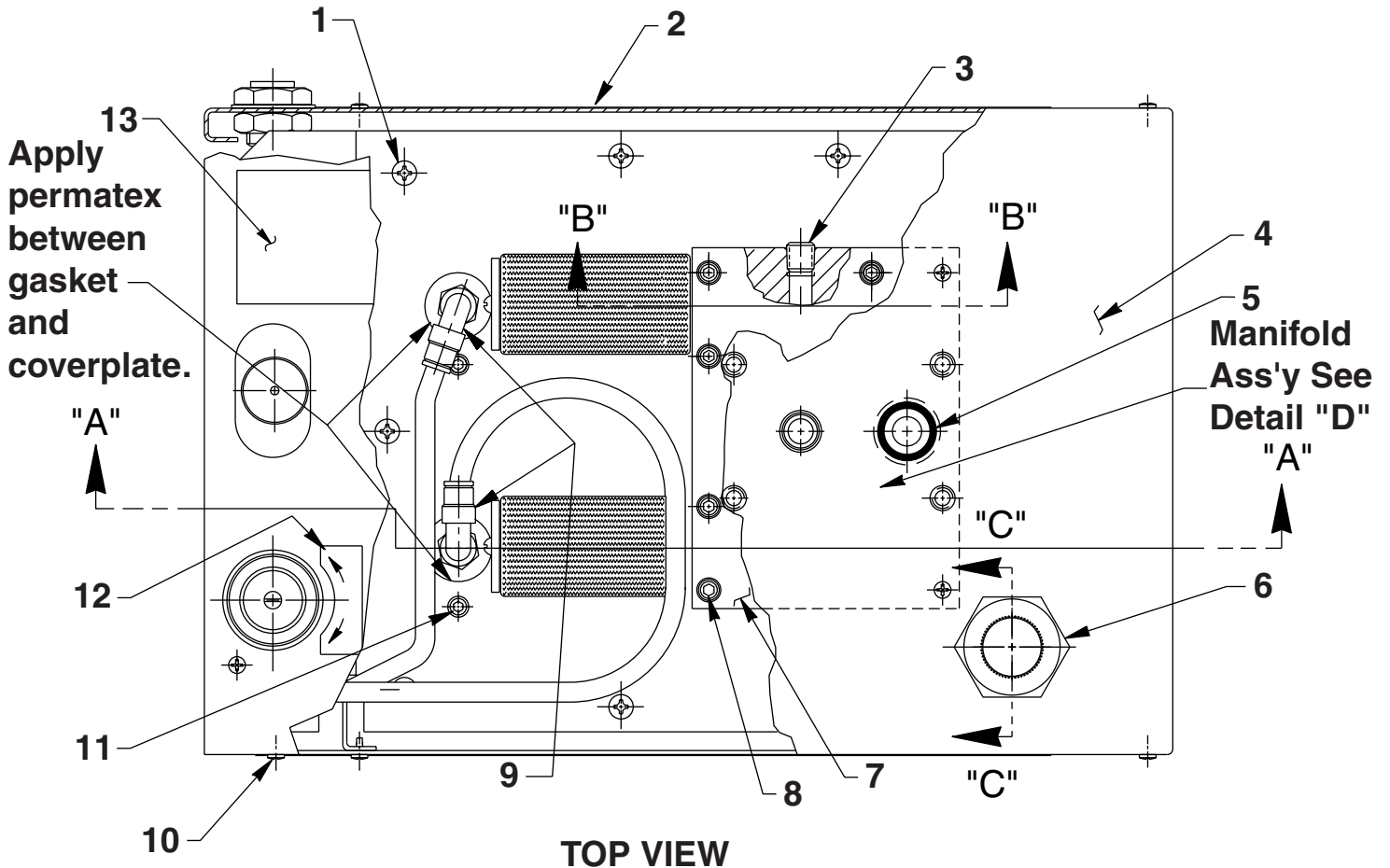
MODEL G
AIR HYDRAULIC PUMP
Rated Capacity: 5,000 PSI at 110 PSI Air Max.



| Item No. | Part No. | No. Req'd | Description | Item No. | Part No. | No. Req'd | Description |
|----------|----------|-----------|--|----------|----------|-----------|---|
| 1 | 13270 | 1 | Cap, Plastic | 9 | 252031 | 1 | Block, Connector Air |
| 2 | 216671 | 1 | Fitting, Straight (1/4 NPTF) | 10 | 252033 | 1 | Regulator, Air |
| 3 | 12330 | 1 | Washer, Plain (1.48 x .82) | 11 | 16614 | 1 | Nut, Panel (1-3/16-18) |
| 4 | 16494 | 1 | Fitting, Straight (1/4 NPTF) | 12 | 14126 | 10 | Screw, Pan Head (10-24 x 3/8) |
| 5 | 351109 | 1 | Assembly, Filter | 13 | 15457 | 3 | Fitting, Elbow (90°; 1/4 NPTF) |
| 6 | 252030 | 1 | Lubricator, Air | 14 | 10826 | 6 | Screw, Socket HD (8-32 x 1/2; Included with connector block [Item #9].) |
| 7 | *10273 | 2 | O-ring (.81 x .62 Nitrile; Included with connector block [Item #9].) | 15 | 252064 | 2 | Screw, Hex Socket (8-32 x 1-3/4) |
| 8 | 10479 | 2 | Fitting, Plug (1/4 NPTF) | | | | |

Part numbers marked with an asterisk (*) are contained in Repair Kit No. 300982.

TOP VIEW & DETAIL D



| Item No. | Part No. | No. Req'd | Description |
|----------|----------|-----------|---|
| 1 | 252168 | 14 | Screw, Pan HD (1/4-10 x 1; Torque to 35/45 in. lbs.) |
| 2 | 309386 | 2 | Decal, Tradename (Hytec; NOTE: Center on shroud as shown [Both Sides].) |
| 3 | 10427 | 2 | Fitting, Plug (1/8 NPTF) |
| 4 | 65062WH2 | 1 | Cover, Top |
| 5 | *10274 | 1 | O-ring (.87 x .68 Nitrile) |
| 6 | 252042 | 1 | Nut, Hex Jam (1-14) |
| 7 | 65071 | 1 | Block, Manifold |
| 8 | 11151 | 8 | Screw, Socket HD (10-24 x 1-1/4; Torque to 50/60 in. lbs.) |
| 9 | 15457 | 3 | Fitting, Elbow (90°; 1/4 NPTF) |
| 10 | 14126 | 10 | Screw, Pan Head (10-24 x 3/8) |
| 11 | 11434 | 4 | Screw, Socket HD (10-24 x 1/2; Torque to 50/60 in. lbs.) |
| 12 | 202076 | 1 | Decal, Label Increase/Decrease |
| 13 | 350492 | 1 | Decal, Instructions (Locate approx. as shown) |
| 14 | 17946 | 1 | Gauge, 0-6,000 PSI (2-1/2" Dia.) |
| 15 | 10970 | 2 | Fitting, Plug (1/4 NPTF) |
| 16 | 210995 | 1 | Decal, Tradename (Locate approx. as shown) |
| 17 | 10020 | 4 | Screw, Soc HD (1/4-20 x 1-1/4) |
| 18 | 45837 | 1 | Manifold |
| 19 | 10479 | 2 | Fitting, Plug (1/4 NPTF) |
| 20 | 10645 | 1 | Fitting, Elbow (45°; 1/4 NPTF) |

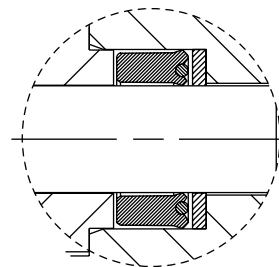
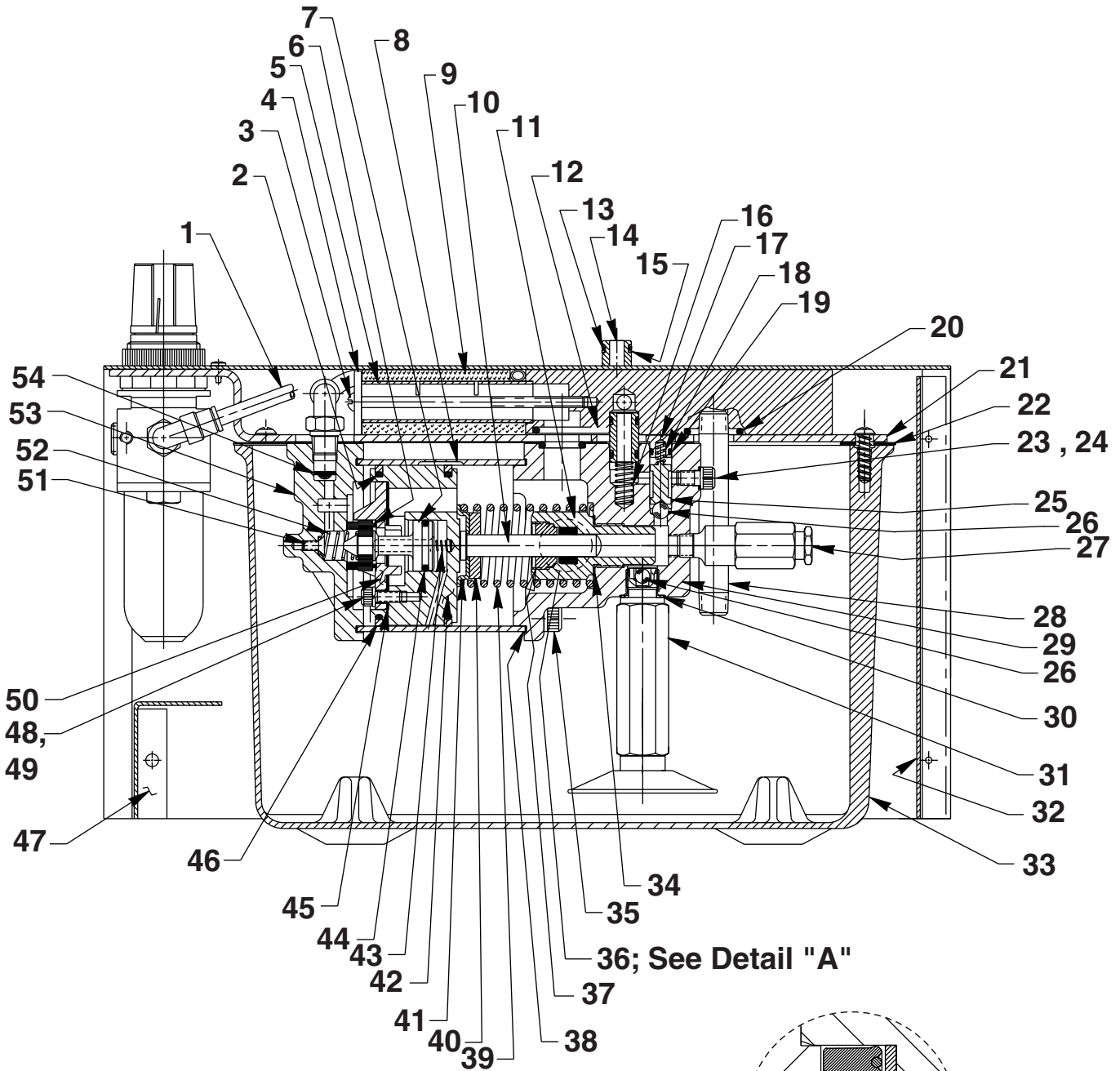
Part numbers marked with an asterisk (*) are contained in Repair Kit No. 300982.

Refer to any operating instructions included with this product for detailed information about operation, testing, disassembly, reassembly, and preventive maintenance.

Items found in this parts list have been carefully tested and selected. **Therefore: Use only genuine Hytec replacement parts!**

Additional questions can be directed to our Technical Services Department.

SECTION A-A



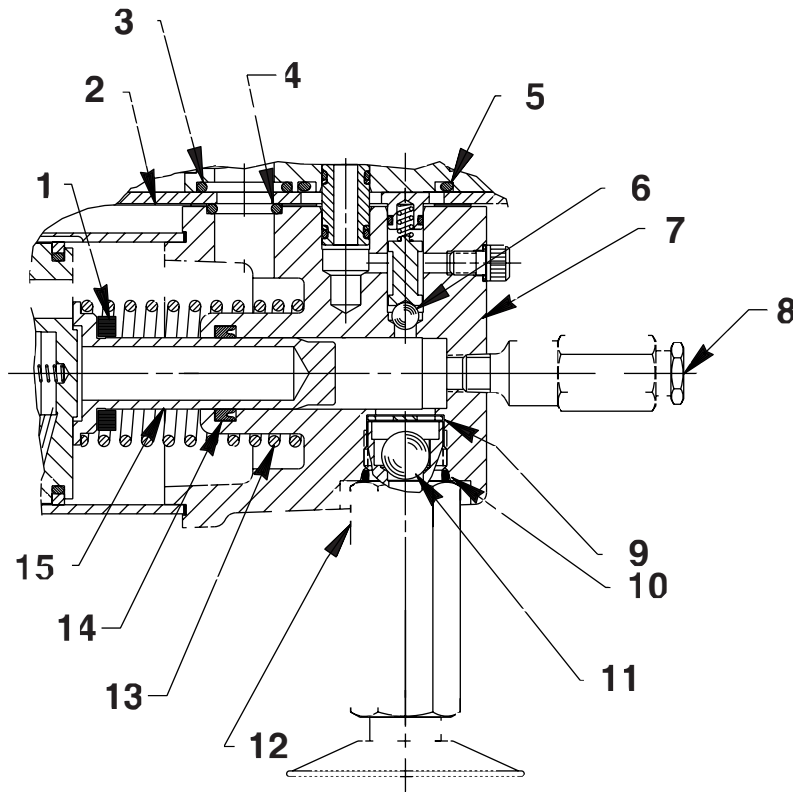
Detail "A"

| Item No. | Part No. | No. Req'd | Description | Item No. | Part No. | No. Req'd | Description |
|----------|----------|-----------|--|----------|-----------|-----------|--|
| 1 | 14726 | 2.2 ft. | Tubing, Nylon | 28 | 15426 | 1 | Fitting, Straight (1/4 NPTF) |
| 2 | *251835 | 4 | O-ring (2.50 x 2.31 Nitrile) | 29 | 64767 | 1 | Body, Pump |
| 3 | 16453 | 2 | Screw, Round HD (10-24 x 4; NOTE: Apply Loctite No. 277 to external thds.) | 30 | *10261 | 1 | Washer, Copper (.75 x .60) |
| 4 | 16450 | 2 | Washer, Special (1.00 x .26) | 31 | 48008 | 1 | Filter, Intake (Torque to 35/40 ft. lbs. oiled; See sheet 4 of 4) |
| 5 | 28387 | 2 | Muffler | 32 | 42382PU2 | 1 | Panel, Front |
| 6 | *28183 | 2 | Poppet, Piston | 33 | 61165 | 1 | Reservoir |
| 7 | 305475 | 2 | Stem, Exhaust Valve | 34 | *10263 | 1 | Washer, Special (1.00 x .77) |
| 8 | 37434 | 2 | Cylinder, Air (NOTE: Locate groove on upper half [top] of pump with chamfered tube end towards rear head [as shown].) | 35 | 17428 | 8 | Screw, Socket HD (1/4-20 x 3-1/2; Torque to 85/95 in. lbs. oiled; cross torque in increments of 30 in. lbs.) |
| 9 | *29992 | 2 | Tube, Foam | 36 | *252373 | 1 | U-cup & Backup (.375) |
| 10 | 252372 | 1 | Piston (3/8") | 37 | *351801 | 1 | Retainer (Note: See "INSTRUCTIONS FOR RETAINER REPLACEMENT" on back sheet 4 of 4.) |
| 11 | 421676 | 1 | Housing, Seal & Piston (Torque to 90/100 ft. lbs. oiled) | 38 | *17429 | 4 | Washer, Backup (2.94 x 2.75) |
| 12 | *11841 | 2 | O-ring (1.62 x 1.37 Nitrile) | 39 | *13938 | 1 | Spring (1.45 OD x 4.4 x .12 WS) |
| 13 | *10268 | 6 | O-ring (.50 x .37 Nitrile) | 40 | 252371 | 1 | Bumper |
| 14 | 21094 | 3 | Bushing | 41 | 252370 | 1 | Guide, Spring |
| 15 | *11863 | 6 | Washer, Backup (.50 x .38) | 42 | 52390 | 2 | Body, Piston |
| 16 | *16448 | 1 | Spring (.31 OD x .81 x .06 WS) | 43 | *12692 | 2 | Spring (.18 OD x 1.70 x .02 WS) |
| 17 | 36497 | 2 | Retainer, Check Valve | 44 | *211052 | 2 | O-ring (.90 x .70 Nitrile) |
| 18 | *10445 | 2 | Spring (.16 OD x .72 x .01 WS) | 45 | *28239 | 2 | Gasket |
| 19 | *12522 | 2 | O-ring (.37 x .25 Urethane) | 46 | *14265 | 4 | Ring, Piston (2.77 x 2.54) |
| 20 | *10276 | 3 | O-ring (1.00 x .75 Nitrile) | 47 | 421211PU2 | 1 | Panel, Back |
| 21 | 65063WH2 | 1 | Plate, Cover | 48 | 211054 | 6 | Screw, Socket HD (10-24 x 1/2; Torque to 50/55 in. lbs.) |
| 22 | 47409 | 1 | Gasket, Reservoir | 49 | *10241 | 6 | Washer, Lock (.33 x .20) |
| 23 | 10002 | 2 | Screw, Socket HD (1/4-20 x 3/8; Torque to 90/110 in. lbs.) | 50 | 33822 | 2 | Casting, Piston End Plate |
| 24 | *10442 | 2 | Washer, Copper (.37 x .25) | 51 | *205674 | 2 | Screw, Flat HD (8-32 x 3/8; Torque to 12/18 in. lbs.) |
| 25 | 202568 | 2 | Guide, Ball | 52 | *205679 | 2 | Spring (.49 OD x .92 x .04 WS) |
| 26 | *10423 | 3 | Ball (9/32" Dia. Steel; Seat at Ass'y.) | 53 | 37468 | 2 | Head, Rear |
| 27 | 21278-48 | 1 | Valve, Relief (4,800/5,300 PSI; NOTE: Apply Loctite 592 [PT #905516] or equiv.; Torque to 150/170 in. lbs.) | 54 | *216296 | 2 | Disc, Filter |

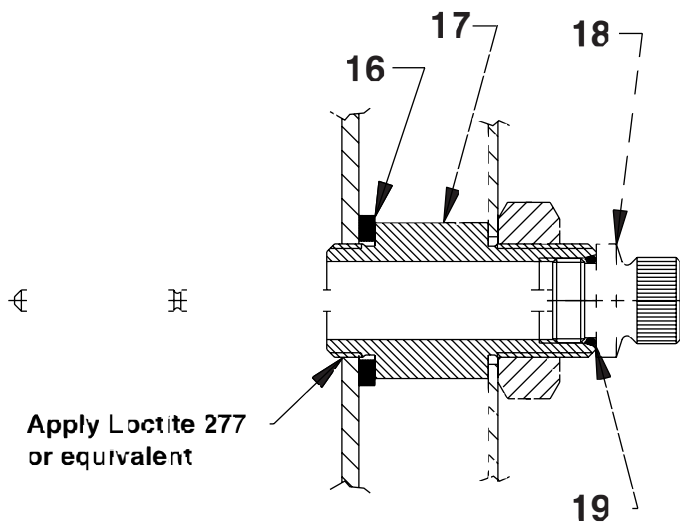
Part numbers marked with an asterisk (*) are contained in Repair Kit No. 300982.

Note: Shaded areas reflect last revision(s) made to this form.

SECTIONS B-B & C-C



SECTION B-B

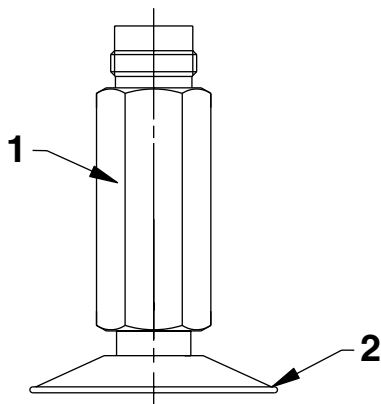


SECTION C-C

| Item No. | Part No. | No. Req'd | Description |
|----------|----------|-----------|--|
| 1 | 202566 | 1 | Bumper |
| 2 | 351021 | 2 | Gasket, Cover Plate |
| 3 | *10276 | 3 | O-ring (1.00 x .75 Nitrile) |
| 4 | *10272 | 2 | O-ring (.75 x .50 Nitrile) |
| 5 | *11841 | 2 | O-ring (1.62 x 1.37 Nitrile) |
| 6 | *10423 | 3 | Ball (9/32" Dia. Steel) |
| 7 | 58746 | 1 | Body, Pump |
| 8 | 21278-15 | 1 | Valve, Relief (Set at 1,500/1,700 PSI; Apply Loctite 592 [PT #905516] or equiv.; Torque to 150/170 in. lbs.) |
| 9 | 202347 | 1 | Stop, Ball |
| 10 | *10653 | 1 | O-ring (.93 x .75 Nitrile) |
| 11 | *10379 | 1 | Ball (1/2" Dia. Steel; Seat at Ass'y.) |
| 12 | 48009 | 1 | Filter, Intake (Torque to 35/40 ft. lbs. oiled; See below) |
| 13 | *16584 | 1 | Spring (1.6 OD x 4.55 x .13 WS) |
| 14 | *16585 | 1 | U-cup (1.00 x .75 x .19 H) |
| 15 | 305791 | 1 | Piston (3/4") |
| 16 | 252041 | 1 | Washer, Seal (1.50 x 1.05) |
| 17 | 351190 | 1 | Adapter, Filler Plug |
| 18 | 251934 | 1 | Dipstick |
| 19 | *10273 | 2 | O-ring (.81 x .62 Nitrile) |

Part numbers marked with an asterisk (*) are contained in Repair Kit No. 300982.

FILTER ADAPTER ASSEMBLIES (Reference Part Numbers 48008 & 48009)



| Item No. | Part No. | No. Req'd | Description |
|----------|----------|-----------|-------------------------------------|
| 1 | 422017 | 1 | Fitting, Filter Adapter (For 48008) |
| | 422018 | 1 | Fitting, Filter Adapter (For 48009) |
| 2 | 29682 | 1 | Filter |

INSTRUCTIONS FOR RETAINER REPLACEMENT

Your pump's retainer is locked into place by one of the two following methods. Determine which method was used on your pump's retainer, then follow the appropriate steps to remove the old and install and stake the new.

Method 1 - Retainer shows no sign of stake marks

1. This retainer has been locked in place with a Loctite product. To replace it, a moderate amount of heat needs to be applied to the cylinder nut (in the area of the retainer) to soften the existing Loctite allowing it to be removed.
2. Install the new retainer into the cylinder nut and torque to 80/100 in. lbs. **Note: Do not use a Loctite product this time but stake the new retainer in place according to instructions in Step 3.**
3. To lock retainer into place, use a center punch positioned in the seam between the retainer and the cylinder nut and stake the new retainer in two places approximately 180° apart.

Method 2 - Retainer has two stake marks in the seam between the retainer and the cylinder nut

1. For replacement of this retainer, the stake marks must be removed. Using a 1/8" or larger diameter drill bit, remove the existing stakes by drilling a short distance into the stake marks. Remove the retainer.
2. Install the new retainer into the cylinder nut and torque to 80/100 in. lbs.
3. To lock retainer into place, use a center punch positioned in the seam between the retainer and the cylinder nut and stake the new retainer in two places approximately 180° apart.

NOTE: Do not stake in the old stake marks.

