



100879



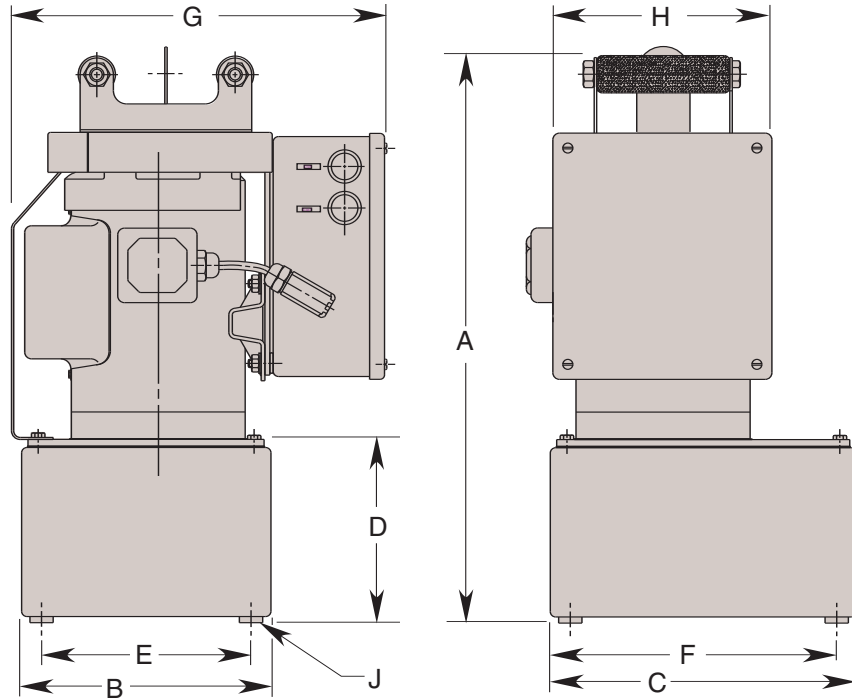
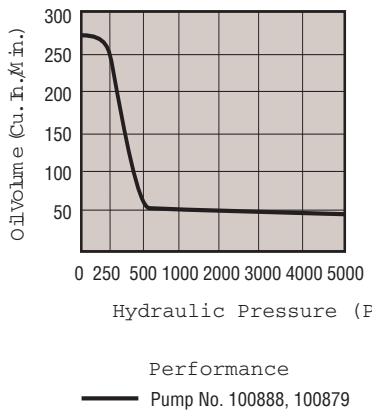
This is Hytec's popular 1 horsepower, totally enclosed-fan cooled induction motor pump, outfitted to operate Hytec's single-acting manual pallet valves.

To pressurize the clamping components on the pallet, simply start the pump using the remote hand switch. It runs until its pressure setting is reached, then stops automatically and drops pressure. The coupler and hose may now be easily disconnected and later reconnected.

The output of this gerotor/axial piston pump is controlled by a pressure switch and externally adjustable pressure regulator, both adjustable from 1,000 to 5,000 psi. It is shipped with a coupler and 2 gallons of hydraulic oil. Order a hose to fit your application separately.

Features:

- NEMA 12 electrical enclosure and controls
- CSA approved
- Drip/chip cover
- Liquid filled gauge
- Dual carrying handles
- Thermal overload protection
- 2.5-gallon metal reservoir
- 44 cu. in./min. oil flow at max. pressure
- 590 cu. in. usable oil
- TEFC motor
- Filtered filler/breather cap
- Includes 100908 hydraulic coupler



Cat. No.	Specifications			Dimensions (In Inches)								
	Electric Motor	Supply Voltage	Noise Level @ Max. Press. (dBA)	A	B	C	D	E	F	G	H	J Thread Size
*100888	1 hp; 1,725 rpm; 115/230 VAC; 16/8 amps max.; 60 Hz; single phase	115 VAC	70	21.375	9.500	11.500	6.500	8.000	10.000	14.125	9.500	½-20 UNF
100888-230		230 VAC										
100879	1 hp; 1,725 rpm; 230/460 VAC; 3.8/1.9 amps max.; 60 Hz; three phase	460 VAC										
100879-230		230 VAC										

NOTE: *For field conversion to 230 VAC, order conversion kit No. 250186.
An optional fluid level/temperature gauge is available, see page 135.
Hose requiring ¼" NPTF male connections not included – order separately, see page 127.