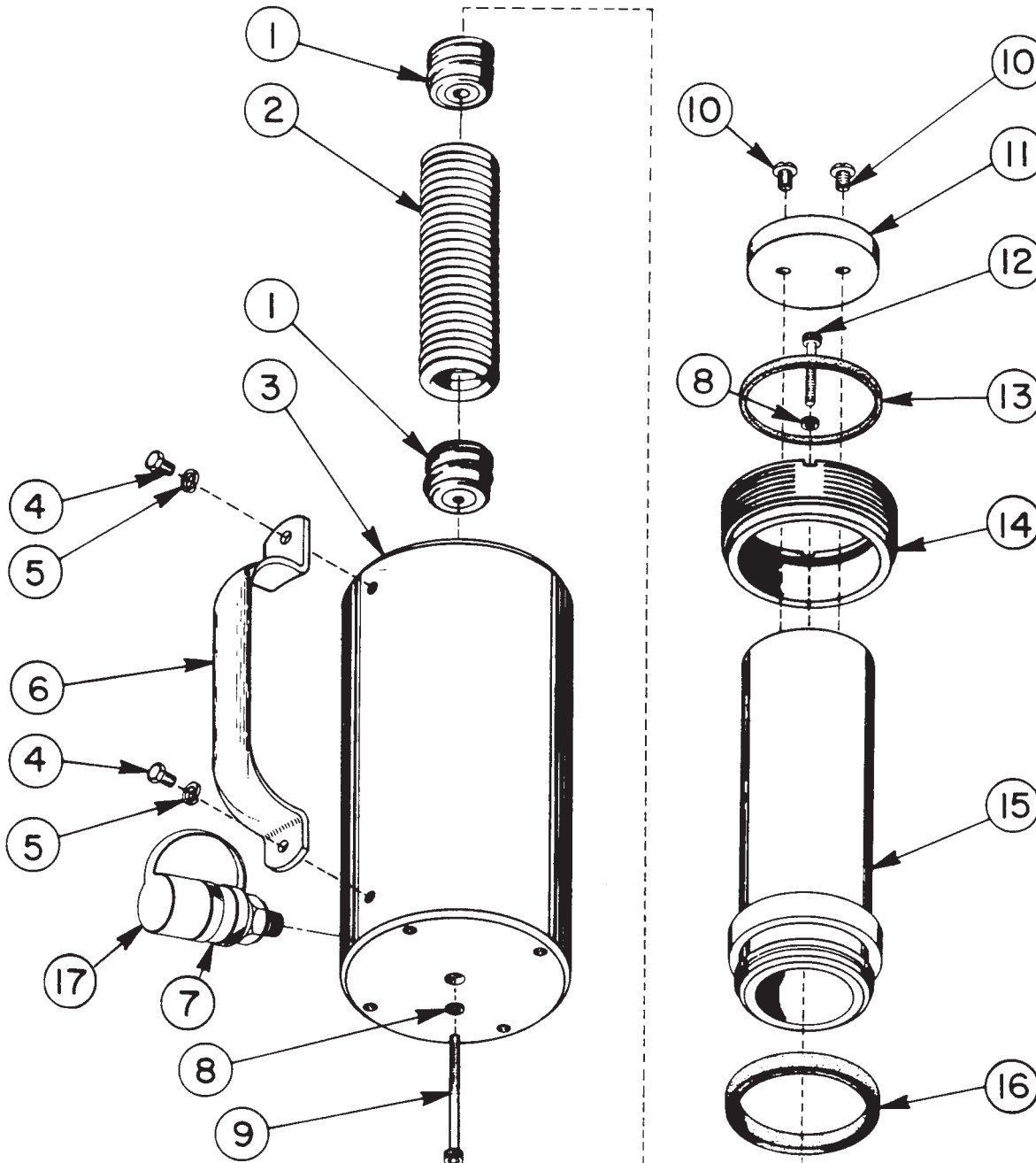


Parts List for:

4111 RA5513  
RA552 YAS-55  
RA556

**MODEL B  
SINGLE-ACTING, SPRING RETURN  
HYDRAULIC CYLINDER**

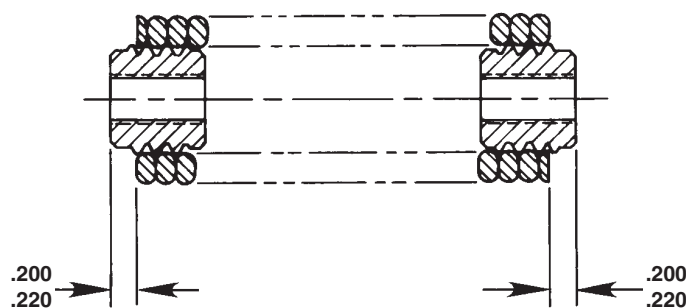
Max. Capacity: 55.2 Tons At 10,000 PSI



# Parts List, Form No. 100406, Back sheet 1 of 1

Item No.	Part No.	No. Req'd	Description	Item No.	Part No.	No. Req'd	Description
1	36170	2	Spring Retainer	11	36161	1	Front Plate
2	201483	1	Extension Spring (For RA556, YAS-55, 4111)	12	12577	1	Soc. Hd. Cap Screw (3/8-16 UNC x 1-3/4 Lg.; Torque to 400/425 in. lbs. [For RA552, RA556, YAS-55, & 4111])
	204429	1	Extension Spring (For RA552)	13	*28851	1	Wiper
	201484	1	Extension Spring (For RA5513)	14	35897	1	Retainer Nut (Torque to 90/100 ft. lbs.)
3	51585	1	Cylinder Body (For RA556, YAS-55, & 4111)	15	43871	1	Piston (For RA556, YAS-55, & 4111)
	52018	1	Cylinder Body (For RA552)		52017	1	Piston (For RA552)
	61047	1	Cylinder Body (For RA5513)		52021	1	Piston (For RA5513)
4	10005	2	Hex Hd. Cap Screw (1/4-20 UNC X 1/2 Lg.; All except RA552)	16	*15916	1	U-cup Piston Seal
5	10244	2	Lockwasher (All except RA552)	17	9866	1	Dust Cap (For 4111 & YAS-55)
6	35903	1	Handle (For RA556, YAS-55, & 4111)	<b>PARTS INCLUDED BUT NOT SHOWN</b>			
	303493	1	Handle (For RA5513)	*37782	1	Decal, Warning (For RA556, YAS-55, & 4111)	
7	9796	1	Coupler w/Dust Cap (For RA552, RA556, & RA5513)	*203908	1	Decal, Warning (For RA552 & RA5513)	
	25600-1	1	Ram Half Coupler (For 4111, & YAS-55)	303463	1	Decal, Trade Name (For RA552)	
8	*12042	2	Copper Washer (9/16 X 3/8 X 1/32)	44982	1	Decal, Trade Name (For RA5513)	
9	16110	1	Soc. Hd. Cap Screw (3/8-16 UNC X 3-1/2 Lg.; Torque to 400/425 in. lbs. [For RA556, YAS-55, 4111])	205801	1	Decal, Trade Name (For RA556)	
	10984	1	Soc. Hd. Cap Screw (3/8-16 UNC x 1-1/2 Lg.; Torque to 400/425 in. lbs. [For RA552])	207115	1	Decal, Trade Name (For YAS-55)	
	16110	2	Soc. Hd. Cap Screw (3/8-16 UNC X 3-1/2 Lg.; Torque to 400/425 in. lbs. [For RA5513])	209284	1	Decal, Trade Name (For 4111)	
10	16112	2	Sl. Rd. Hd. Machine Screw (3/8-16 UNC X 3/4 Lg.; Torque to 50/60 in. lbs.)	Part numbers marked with an asterisk (*) are contained in Repair Kit No. 300167.			

## SPRING & RETAINER ASSEMBLY



**NOTE:** When a new Model C piston (Item #15) is used to replace the piston in a Model B Cylinder, a new Model C style packing (Item #16) must also be replaced.

### Model C Pistons & U-cup

15	52190	1	Piston (For RA556, 4111, & YAS-55)
	52189	1	Piston (For RA552)
	52191	1	Piston (For RA5513)
16	13411	1	U-cup Piston Seal

Refer to any operating instructions included with this product for detailed information about operation, testing, disassembly, reassembly, and preventive maintenance.

Items found in this parts list have been carefully tested and selected. **Therefore: Use only genuine replacement parts!**

Additional questions can be directed to our Technical Services Department.