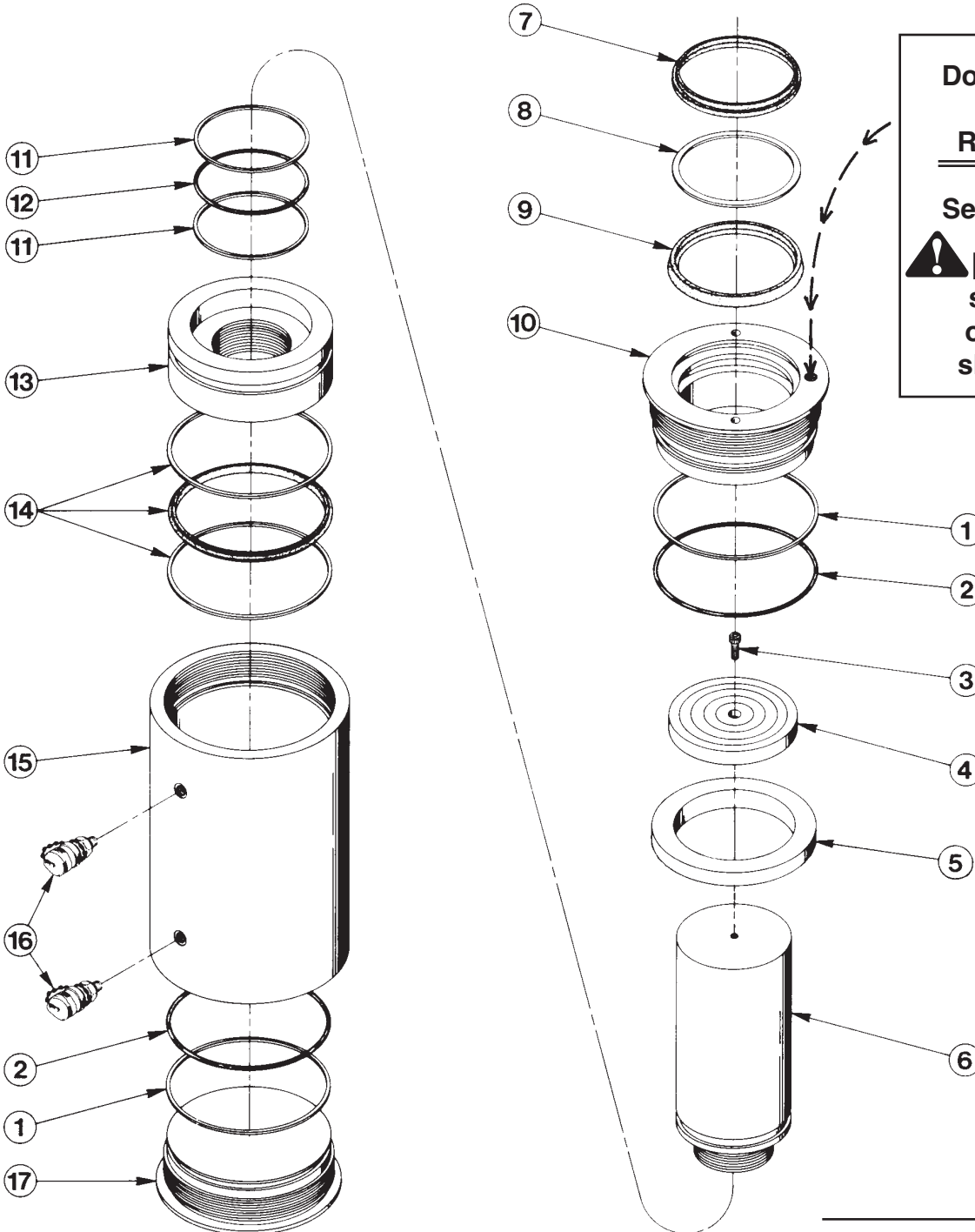


Parts List for:

RD3006BP  
RD30048B  
RD300 Series

## DOUBLE-ACTING HYDRAULIC CYLINDER

Max. Capacity: 300.7 Tons at 10,000 PS



**Double-acting  
Cylinder  
Relief Valve**

See important  
**! DANGER**  
statement  
on back of  
sheet 1 of 1



**DANGER:** To help avoid possible serious personal injury or death,

- In the event that the cylinder retract port is ever restricted or plugged, a double-acting cylinder relief valve will help prevent excessive pressure from building in the cylinder. **DO NOT** attempt to adjust or service this relief valve! If oil leakage is detected from this relief valve, discontinue use of the cylinder immediately and contact **Power Team Technical Services**. Only Power Team Authorized Service Centers should service this relief valve.

Item No.	Part No.	No. Req'd	Description
1	*212692	2	Backup Washer (8-3/4 x 81/4" x 3/32)
2	*212691	2	O-ring (8-1/2 x 8 x 1/4)
3	10050	1	Cap Screw (3/8-16 x 1" Lg.; Not used on RD3006BP)
4	46380	1	Piston Rod Cap (Not used on RD3006BP)
5	47489	1	Spacer (For models with 24" stroke or more)
	47816	1	Spacer (For RD30048B)
†6	52729-" "	1	Piston Rod
	52729-6P	1	Piston Rod (6" stroke with 2-1/2 UN threads; For RD3006BP)
7	*212697	1	Rod Wiper
8	*212696	1	Backup Washer (7" x 6-1/4 x 1/8)
9	*212695	1	U-cup
10	61432	1	Piston Retainer (Torque to 650 ft. lbs.)
11	*212694	2	Backup Washer (6-1/4 x 5-3/4 x 3/32, -435)
12	*212693	1	O-ring (6-1/4 x 5-3/4 x 1/4, -435)
13	52728	1	Piston Head
14	*212698	1	T-seal & Backup Rings (8-3/4 x 8-1/4 x 1/2 wide)
†15	52730-" "	1	Cylinder Body
16	25600	2	Quick Coupler
17	52731	1	Retainer Nut (Torque to 650 ft. lbs.)
	52731-B	1	Retainer Nut (Torque to 650 ft. lbs., has four 1-1/4-12 UNF holes; For RD3006BP & RD30048B)

**PARTS INCLUDED BUT NOT SHOWN**

37782	1	Warning Decal
306567	1	Trade Name Decal
52723	1	Handle Assembly (For all models except RD30048B)
52723	2	Handle Assembly (For RD30048B)

Items marked with an asterisk (\*) are contained in Repair Kit No. 300466.

† To order the correct piston rod and cylinder body for your specific model, list the stroke length as a suffix to the item part number.

For example: 52729-6 = 6" stroke  
 52729-13 = 13" stroke  
 OR  
 52730-30 = 30" stroke  
 52730-48 = 48" stroke

Refer to any operating instructions included with this product for detailed information about operation, testing, disassembly, reassembly, and preventive maintenance.

Items found in this parts list have been carefully tested and selected. **Therefore: Use only genuine Power Team replacement parts!**

Additional questions can be directed to our Technical Service Department.