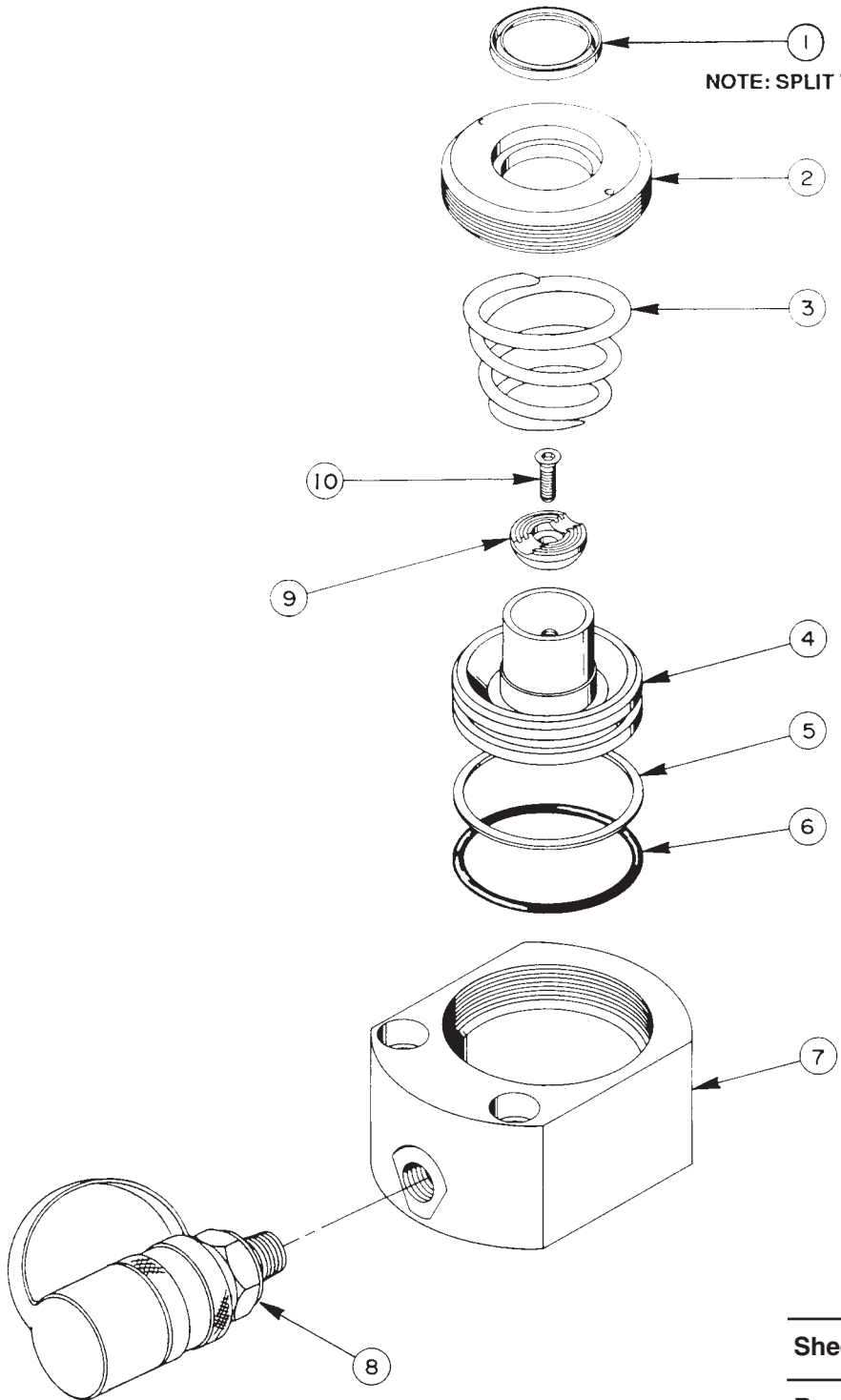


## SINGLE-ACTING, SPRING RETURN HYDRAULIC CYLINDER

Max. Capacity: 98.2 Tons at 10,000 PS



# Parts List, Form No. 100736, Back sheet 1 of 1

---

Item No.	Part No.	No. Req'd	Description
1	*212219	1	Rod Wiper (Split wiper at assembly)
2	52642	1	Retainer (Torque to 500/525 in. lbs.)
3	306425	1	Compression Spring
4	53394	1	Piston
5	*19173	1	Backup Washer
6	*12199	1	O-ring
7	52643	1	Cylinder Body
8	9796	1	Cylinder Half Coupler w/Dust Cap
9	309156	1	Piston Head Cap
10	215777	1	Hex. Soc. Button Hd. Cap Screw (1/4-20 UNC X 1-1/4 Lg.; See Note Below)

### PARTS INCLUDED BUT NOT SHOWN

203908-CE	1	Warning Decal (For RLS1000S-PFAFF)
*203908	1	Warning Decal
351916	1	Trade Name Decal
252183	1	Trade Name Decal (For RLS1000S-PFAFF)

Part numbers marked with an asterisk (\*) are contained in Repair Kit No. 300460.

### NOTE:

1. Apply Loctite to screw (Item 10).
2. Insert screw into cap (Item 9) and tighten until snug.
3. Back off screw until cap is allowed to swivel 5° in any direction.

Note: Shaded areas reflect last revision(s) made to this form.

Refer to any operating instructions included with this product for detailed information about operation, testing, disassembly, reassembly, and preventive maintenance.

Items found in this parts list have been carefully tested and selected. **Therefore: Use only genuine Power Team replacement parts!**

Additional questions can be directed to our Technical Services Department.