

Parts List for:

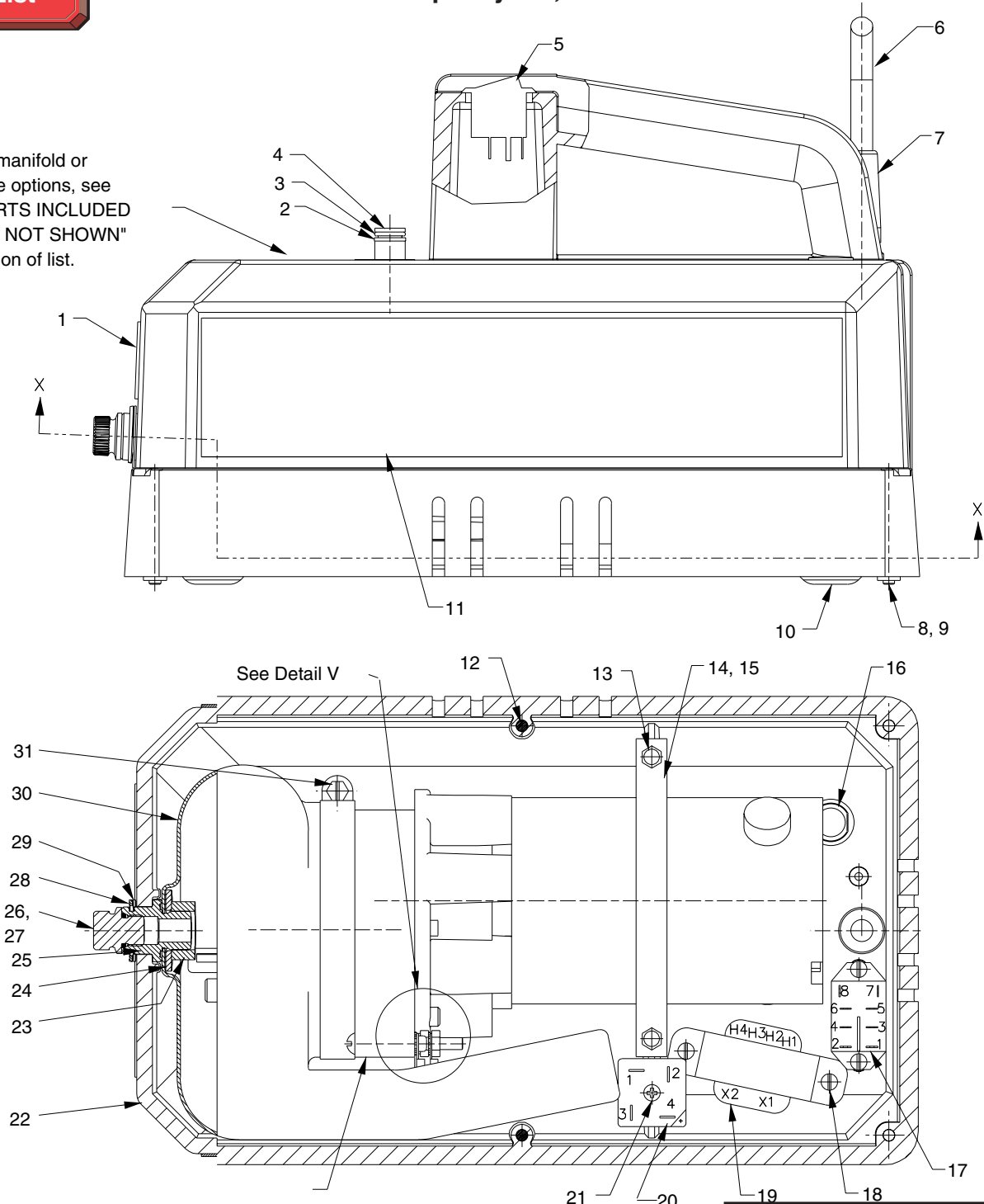
PE102-FSC
PE102-28-DC
PE102-28-FSC
PE102-28-220DC

PE102-115DC
PE102-220DC
PE102-220-FSC



MODEL C ELECTRIC HYDRAULIC PUMP Max. Capacity: 10,000 PSI

For manifold or valve options, see "PARTS INCLUDED BUT NOT SHOWN" section of list.



Basic Pump Assembly
See back sheet 2 of 6

SECTION X-X

Sheet No. 1 of 6

Parts List, Form No. 101883, Back sheet 1 of 6

| Item No. | Part No. | No. Req'd | Description |
|----------|----------|-----------|--|
| 1 | *251072 | 1 | Warning & Fill Instructions Decal |
| 2 | *11863 | 2 | Backup Washer (.50 x .38) |
| 3 | *10268 | 2 | O-ring (.50 x .37 Nitrile) |
| | †17716 | 2 | O-ring (.50 x .37 EPR) |
| 4 | *251128 | 1 | Bushing |
| 5 | 251051 | 1 | Rocker Switch (For PE102-FSC, PE102-28-FSC & PE102-220-FSC) |
| 6 | 24733 | 1 | Cord Set (For PE102-FSC, PE102-28-FSC & PE102-220-FSC) |
| 7 | 251048 | 1 | Bushing (For PE102-FSC, PE102-28-FSC & PE102-220-FSC) |
| 8 | 12515 | 4 | Machine Screw (10-24 x 1 3/4) |
| 9 | *207405 | 4 | Locknut (10-24) |
| 10 | 420607 | 1 | Base Plate |
| 11 | 350672 | 2 | Trade Name Decal (For PE102-FSC, PE102-28-FSC & PE102-220-FSC) |
| 12 | 14456 | 2 | Screw (10-24 x 1/2; Place ground wire terminal between cover & housing.) |
| 13 | 211060 | 2 | Screw (9-15 x 1) |
| 14 | 251039 | .5 ft. | Motor Mounting Strap |
| 15 | 251041 | 3" | Channel Rubber |
| 16 | 251045 | 1 | "D" Bushing Plug (For PE102-FSC, PE102-28-FSC & PE102-220-FSC) |
| 17 | 251046 | 1 | Relay (For PE102-FSC, PE102-28-FSC & PE102-220-FSC) |
| 18 | 15468 | 4 | Screw (6-32 x 3/8; For PE102-FSC, PE102-28-FSC & PE102-220-FSC) |
| 19 | 251049 | 1 | Transformer (For PE102-FSC, PE102-28-FSC & PE102-220-FSC) |

| Item No. | Part No. | No. Req'd | Description |
|----------|----------|-----------|---|
| 20 | 251050 | 1 | Rectifier (For PE102-FSC, PE102-28-FSC & PE102-220-FSC) |
| 21 | 251073 | 1 | Screw (6-32 x 3/4 Lg.; For PE102-FSC, PE102-28-FSC & PE102-220-FSC) |
| 22 | 64363 | 1 | Plastic Housing |
| 23 | 10394 | 1 | Hex Nut (5/8-18) |
| 24 | 13324 | 1 | Washer (1.33 x .66) |
| 25 | 350583 | 1 | Filler Adapter |
| 26 | *13755 | 1 | O-ring (.55 x .41 Nitrile) |
| | †251035 | 1 | O-ring (.55 x .41 EPR) |
| 27 | 251280 | 1 | O-ring Boss Plug |
| 28 | 251043 | 1 | Retaining Ring |
| 29 | 201373 | 1 | Retainer Washer |
| 30 | 420643 | 1 | Bladder |
| | †420736 | 1 | Bladder |
| 31 | 350305 | 1 | Hose Clamp |

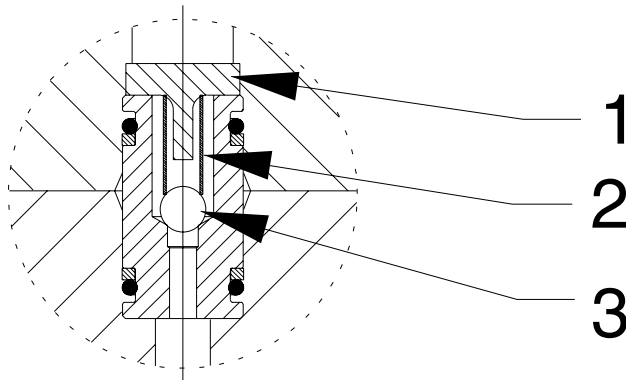
OTHER OPTIONS AND ACCESSORIES

| | | |
|--------|---|---|
| 9562 | 1 | Manifold (See Form No. 101344; For PE102-FSC, PE102-28-FSC, PE102-115DC, PE102-220DC & PE102-220-FSC) |
| 351240 | 1 | Manifold (For PE102-28-DC & PE102-28-220DC) |



Part numbers marked with an asterisk (*) are contained in Repair Kit No. 300651.
 Part numbers marked with a dagger (†) are contained in EPR Seal Kit No. 300653.

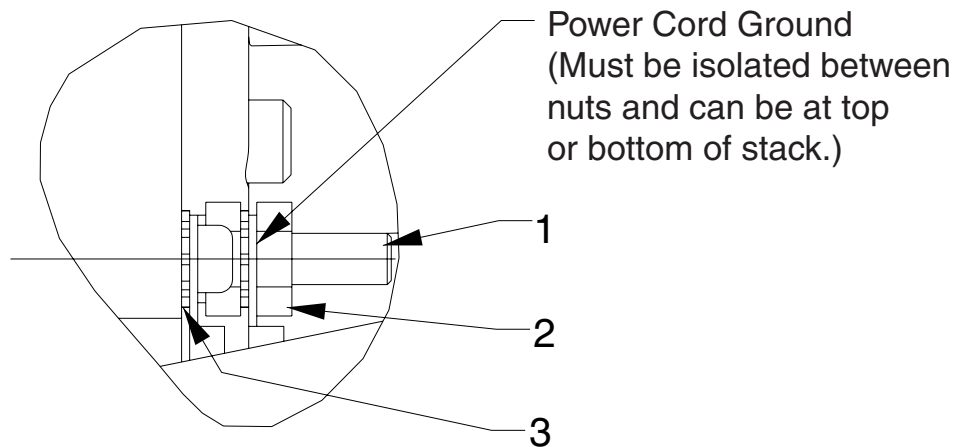
DETAIL FOR 2-WAY VALVE OUTLET CHECK



| Item No. | Part No. | No. Req'd | Description |
|----------|----------|-----------|---|
| 1 | 209795 | 1 | Outlet Ball Stop |
| 2 | *10445 | 1 | Compression Spring (5/32 O.D. X 3/4 Lg.) |
| 3 | *12223 | 1 | Ball (3/16 Dia.) |

Part numbers marked with an asterisk (*) are contained in Repair Kit No. 300653.

DETAIL V

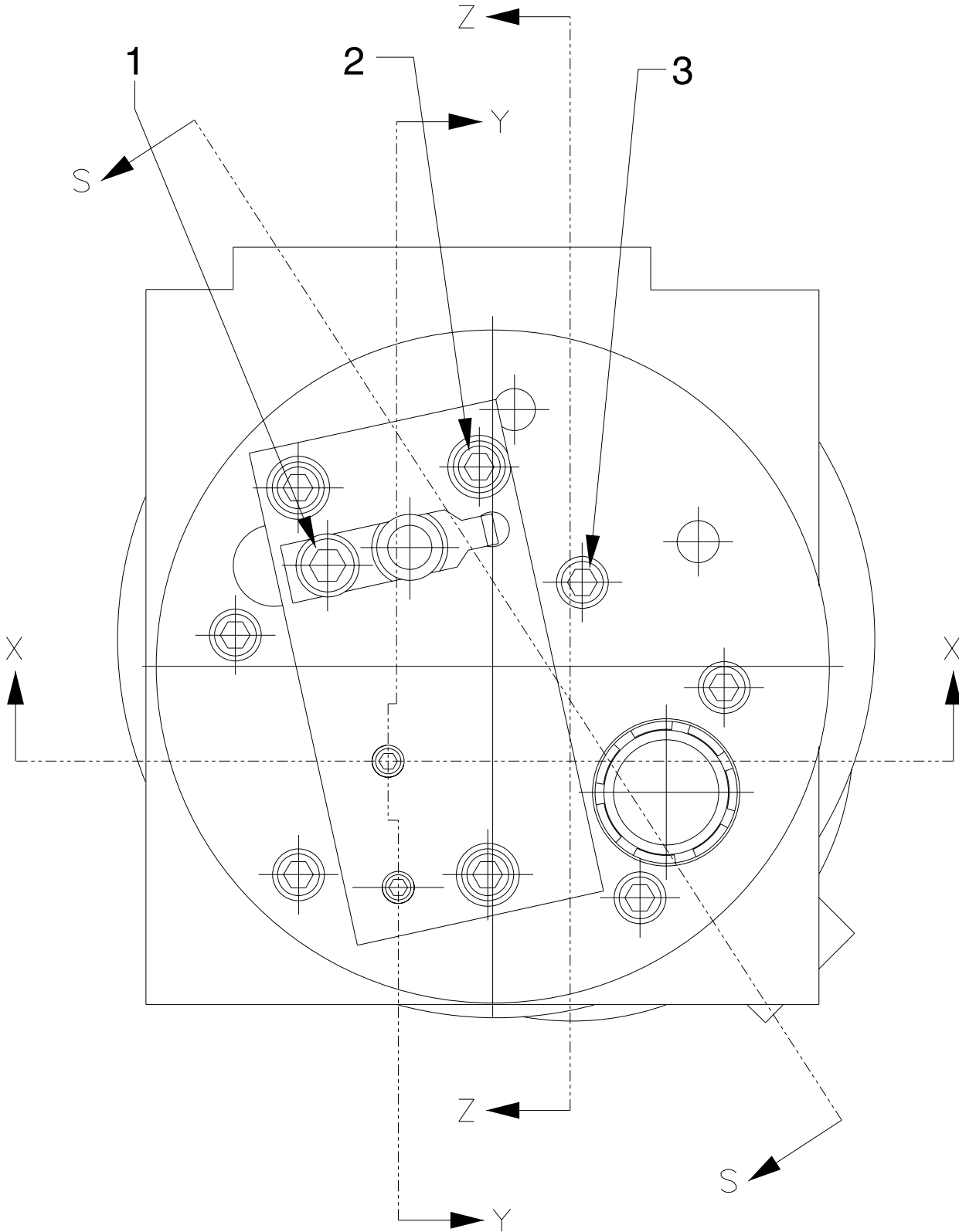


Grd

Note: Serrated lockwasher must be adjacent to pump body.

| Item No. | Part No. | No. Req'd | Description |
|----------|----------|-----------|---|
| 1 | 12515 | 1 | Machine Screw (#10-24 UNC X 3/4 Lg.) |
| 2 | 10197 | 2 | Nut (#10-24 UNC) |
| 3 | 11108 | 2 | Lockwasher (#10 External Tooth) |

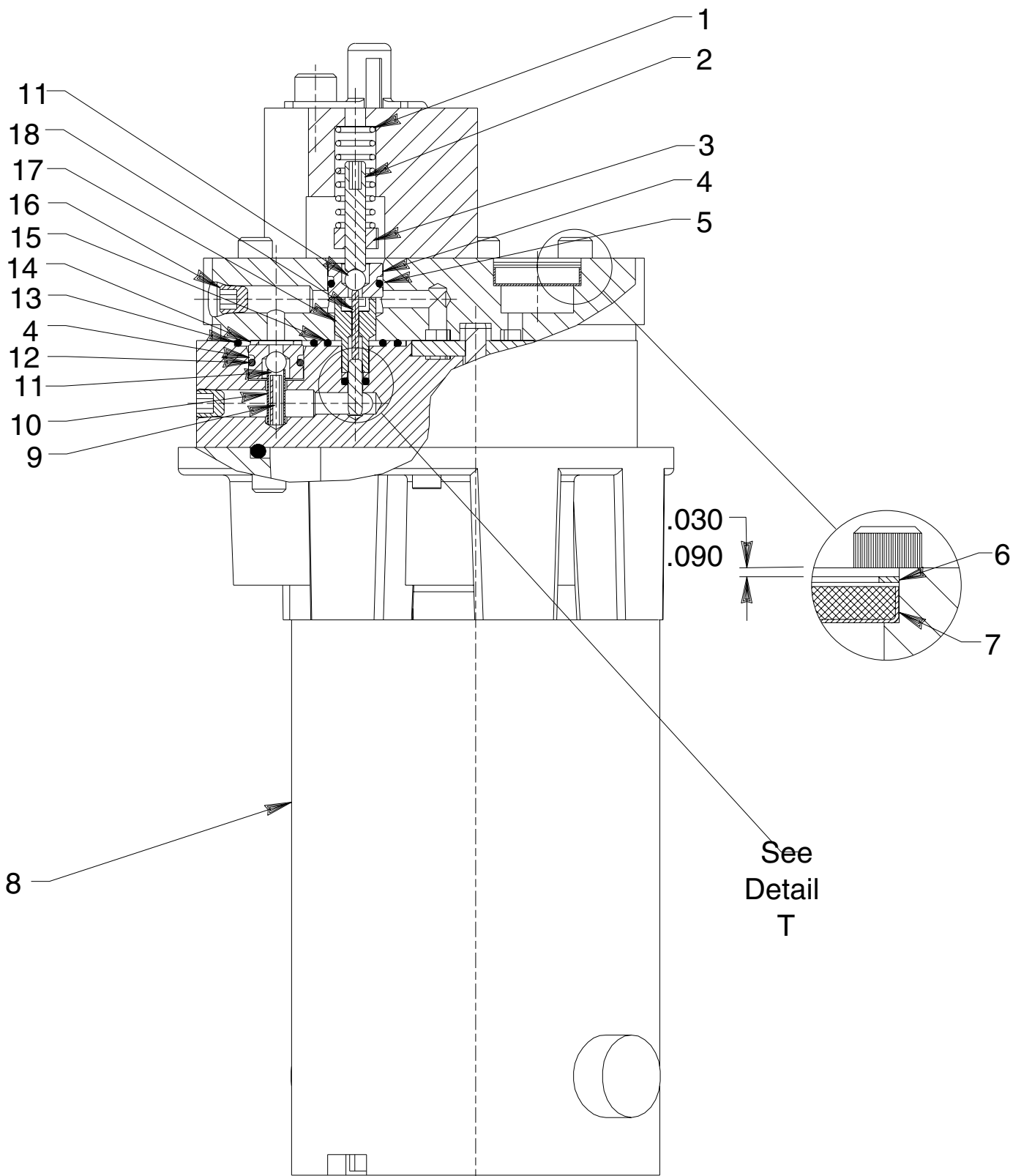
BASIC PUMP ASSEMBLY



| Item No. | Part No. | No. Req'd | Description |
|----------|----------|-----------|---|
| 1 | 10002 | 1 | Screw (1/4-20 UNC X 3/8 Lg.; Torque to 80/100 in. lbs.) |
| 2 | 14423 | 3 | Screw (#10-24 X 2" Lg.; Torque to 60/80 in. lbs.) |
| 3 | 14426 | 5 | Screw (#10-24 UNC X 1" Lg.; Torque to 60/80 in. lbs.) |



SECTION X-X



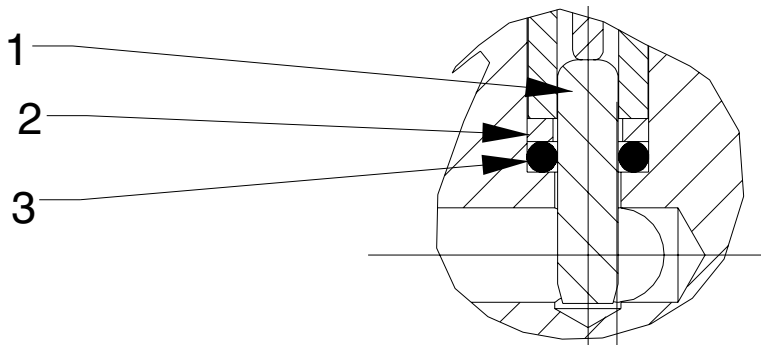
| Item No. | Part No. | No. Req'd | Description |
|----------|------------|-----------|--|
| 1 | *14484 | 1 | Compression Spring (3/8 O.D. X 1" Lg.) |
| 2 | *251067 | 1 | Set Screw (#10-24 UNC x 1" Lg. Set unloading valve to 400/500 PSI) |
| 3 | *207405 | 1 | Locknut (10-24 UNC) |
| 4 | *251065 | 1 | Replaceable Seat |
| 5 | *10268 | 1 | O-ring (1/2 X 3/8 X 1/16) |
| | †17716 | 1 | O-ring (1/2 X 3/8 X 1/16) |
| 6 | *16686 | 1 | Retaining Ring (Internal) |
| 7 | *214578 | 1 | Filter |
| 8 | 421297-110 | 1 | Motor (For PE102-28-FSC, PE102-28DC, PE102-FSC & PE102-115DC; For replacement brush assembly, order [2] #251114-110) |
| | 421297-220 | 1 | Motor (For PE102-220-FSC, PE102-28-220DC & PE102-220DC; For replacement brush assembly, order [2] #251114-220) |
| 9 | 11512 | 1 | Roll Pin |
| 10 | 14431 | 1 | Compression Spring (3/16 O.D. X 5/8 Lg.) |
| 11 | *12223 | 2 | Ball (3/16 Dia.) |
| 12 | *13943 | 1 | O-ring (1/2 X 3/8 X 1/16) |
| | †17716 | 1 | O-ring (1/2 X 3/8 X 1/16) |
| 13 | *10302 | 1 | O-ring (3/4 X 5/8 X 1/16) |
| | †12400 | 1 | O-ring (3/4 X 5/8 X 1/16) |
| 14 | *11031 | 1 | Copper Washer (15/32 X 5/16 X 1/32) |
| 15 | *12098 | 1 | O-ring (9/16 X 7/16 x 1/16) |
| | †250136 | 1 | O-ring (9/16 X 7/16 x 1/16) |
| 16 | 15130 | 3 | Plug (1/16 NPTF) |
| 17 | 251068 | 1 | Guide |
| 18 | 13937 | 1 | Dowel Pin |



Part numbers marked with an asterisk (*) are contained in Repair Kit No. 300651.
Part numbers marked with a dagger (†) are contained in EPR Seal Kit No. 300653.

Note: Shaded areas reflect last revision(s) made to this form.

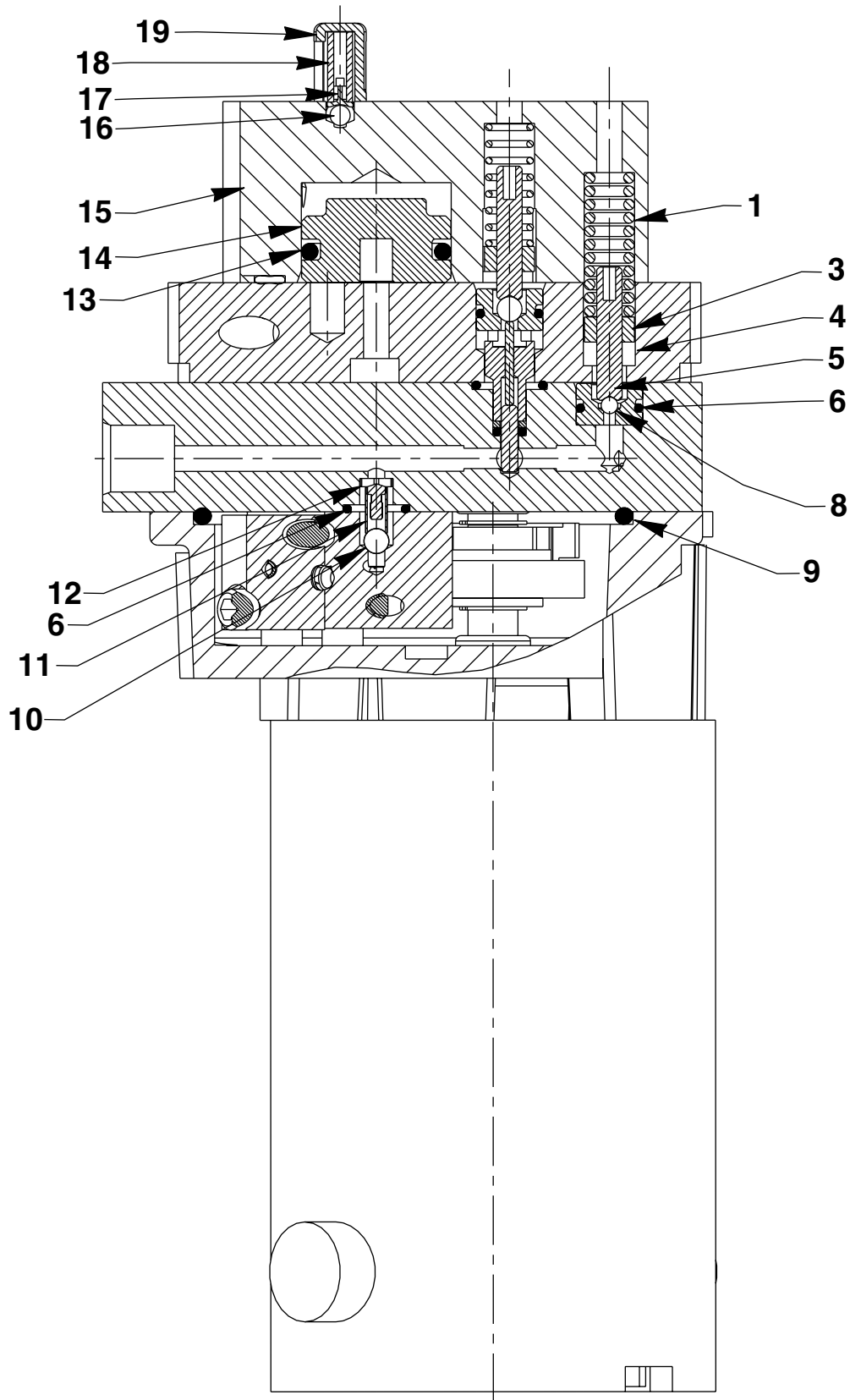
DETAIL T



| Item No. | Part No. | No. Req'd | Description |
|----------|----------|-----------|------------------------------------|
| 1 | 10796 | 1 | Dowel Pin |
| 2 | *214992 | 1 | Backup Washer (15/64 x 1/8 x 3/64) |
| 3 | *17797 | 1 | O-ring (1/4 X 1/8 X 1/16) |
| | †17713 | 1 | O-ring (1/4 X 1/8 X 1/16) |

Part numbers marked with an asterisk (*) are contained in Repair Kit No. 300651.
Part numbers marked with a dagger (†) are contained in EPR Seal Kit No. 300653.

SECTION Y-Y



| Item No. | Part No. | No. Req'd | Description |
|----------|----------|-----------|---|
| 1 | *16724 | 1 | Compression Spring (3/8 O.D. x 1-1/4 Lg.) |
| 3 | *251067 | 1 | Set Screw (#10-24 UNC x 1" Lg.; Set High Pressure Relief Valve to 10,100/10,700 PSI [2,800/3,200 PSI for PE102-28-DC & PE102-28-220DC]) |
| 4 | *207405 | 1 | Locknut (10-24 UNC) |
| 5 | *251064 | 2 | Replaceable Seat |
| 6 | *13943 | 3 | O-ring (1/2 X 3/8 X 1/16) |
| | †17716 | 3 | O-ring (1/2 X 3/8 X 1/16) |
| 8 | *10418 | 1 | Steel Ball (1/8 Dia.) |
| 9 | *10297 | 1 | O-ring (3-1/2 X 3 -1/4 X 1/8) |
| | †13454 | 1 | O-ring (3-1/2 X 3 -1/4 X 1/8) |
| 10 | *12223 | 1 | Ball (3/16 Dia.) |
| 11 | *10445 | 1 | Compression Spring (5/32 O.D. X 3/4 Lg.) |
| 12 | 24549 | 1 | Ball Guide |
| 13 | *19029 | 1 | O-ring (1-1/8 x 15/16 x 1/8) |
| | †251288 | 1 | O-ring (1-1/8 x 15/16 x 1/8) |
| 14 | 350619 | 1 | Eccentric |
| 15 | 420616 | 1 | Automatic Valve Body |
| 16 | *10374 | 1 | Steel Ball (7/32 Dia.) |
| 17 | 200796 | 1 | Adapter |
| 18 | *15691 | 1 | Compression Spring (1/4 O.D. X 5/8 Lg.) |
| 19 | 350577 | 1 | Spring Retainer |



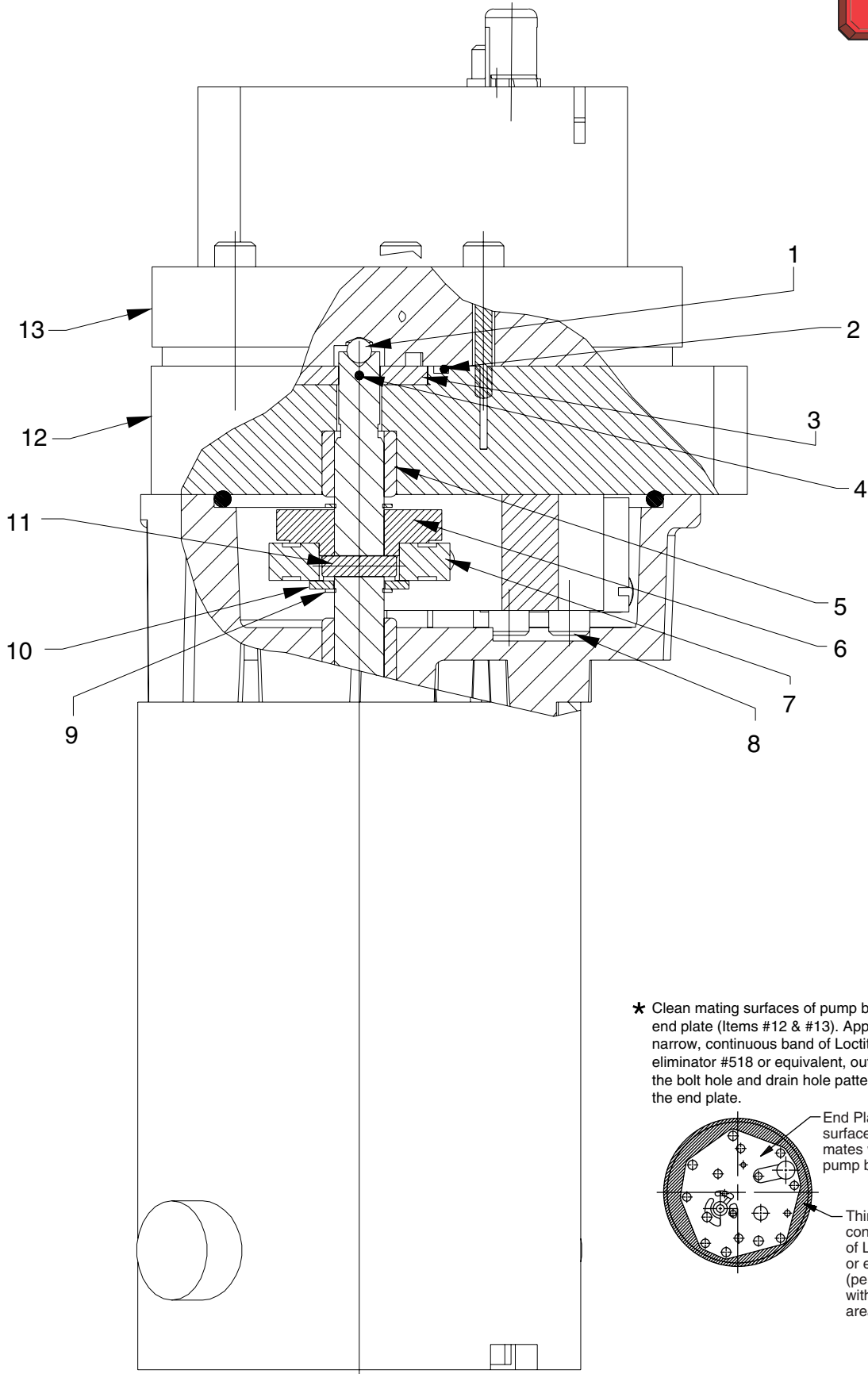
Part numbers marked with an asterisk (*) are contained in Repair Kit No. 300651.
 Part numbers marked with a dagger (†) are contained in EPR Seal Kit No. 300653.

Refer to any operating instructions included with this product for detailed information about operation, testing, disassembly, reassembly, and preventive maintenance.

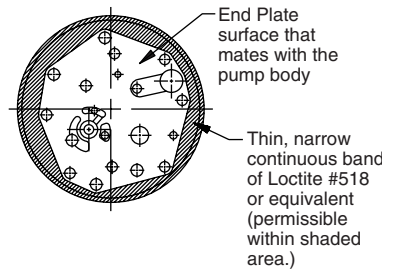
Items found in this parts list have been carefully tested and selected. **Therefore: Use only genuine Power Team replacement parts!**

Additional questions can be directed to our Technical Services Department.

SECTION Z-Z



★ Clean mating surfaces of pump body and end plate (Items #12 & #13). Apply a thin, narrow, continuous band of Loctite gasket eliminator #518 or equivalent, outside of the bolt hole and drain hole patterns on the end plate.

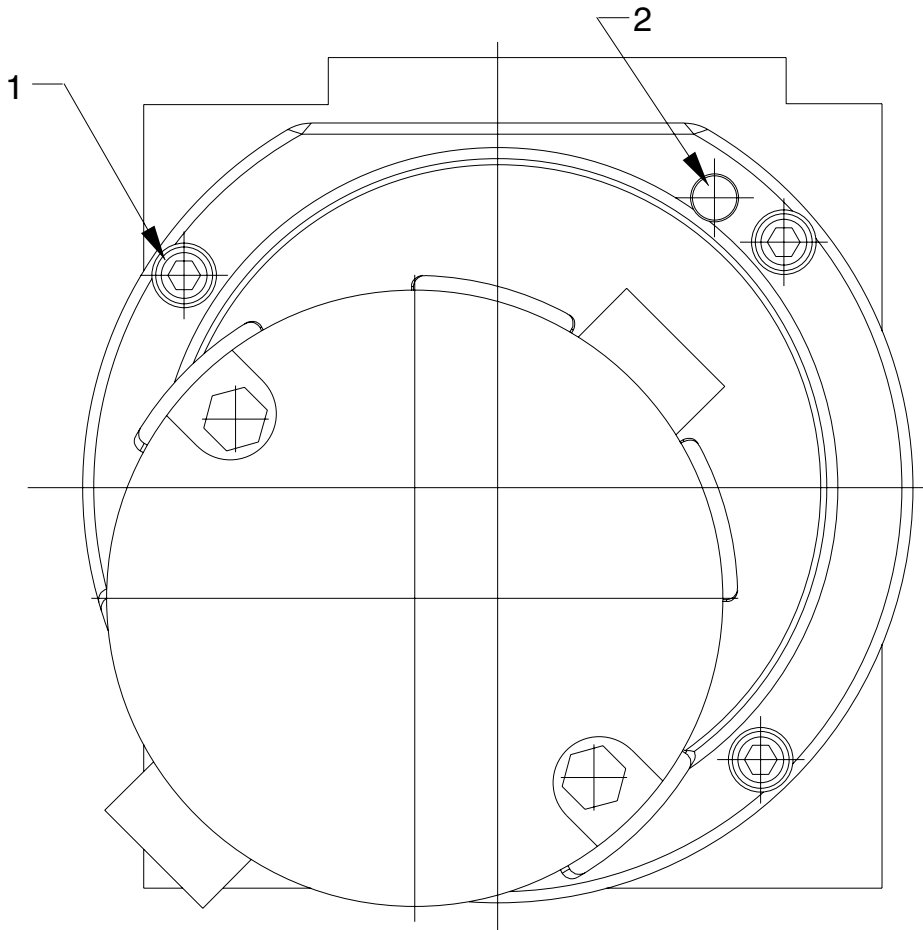


| Item No. | Part No. | No. Req'd | Description |
|----------|----------|-----------|---|
| 1 | *12223 | 1 | Ball (3/16 Dia.) |
| 2 | *251063 | 1 | O-ring (1-7/16 x 1-5/16 x 1/16) |
| | †251289 | 1 | O-ring (1-7/16 x 1-5/16 x 1/16) |
| 3 | 420615 | 1 | Gerotor Set |
| 4 | 251061 | 1 | Dowel Pin |
| 5 | 251129 | 1 | Needle Bearing |
| 6 | 421609 | 1 | Eccentric |
| 7 | 15695 | 1 | Ball Bearing |
| 8 | 250491 | 4 | Screw (10-24 UNC x 1-1/4 Lg.; Torque to 60/80 in. lbs.) |
| 9 | 251069 | 2 | Retaining Ring (Internal) |
| 10 | 252169 | 1 | Washer (25/64 X 3/4 X 1/16) |
| 11 | 251117 | 1 | Spring Pin |
| 12 | 64731 | 1 | Pump Body |
| 13 | 64347 | 1 | End Plate |



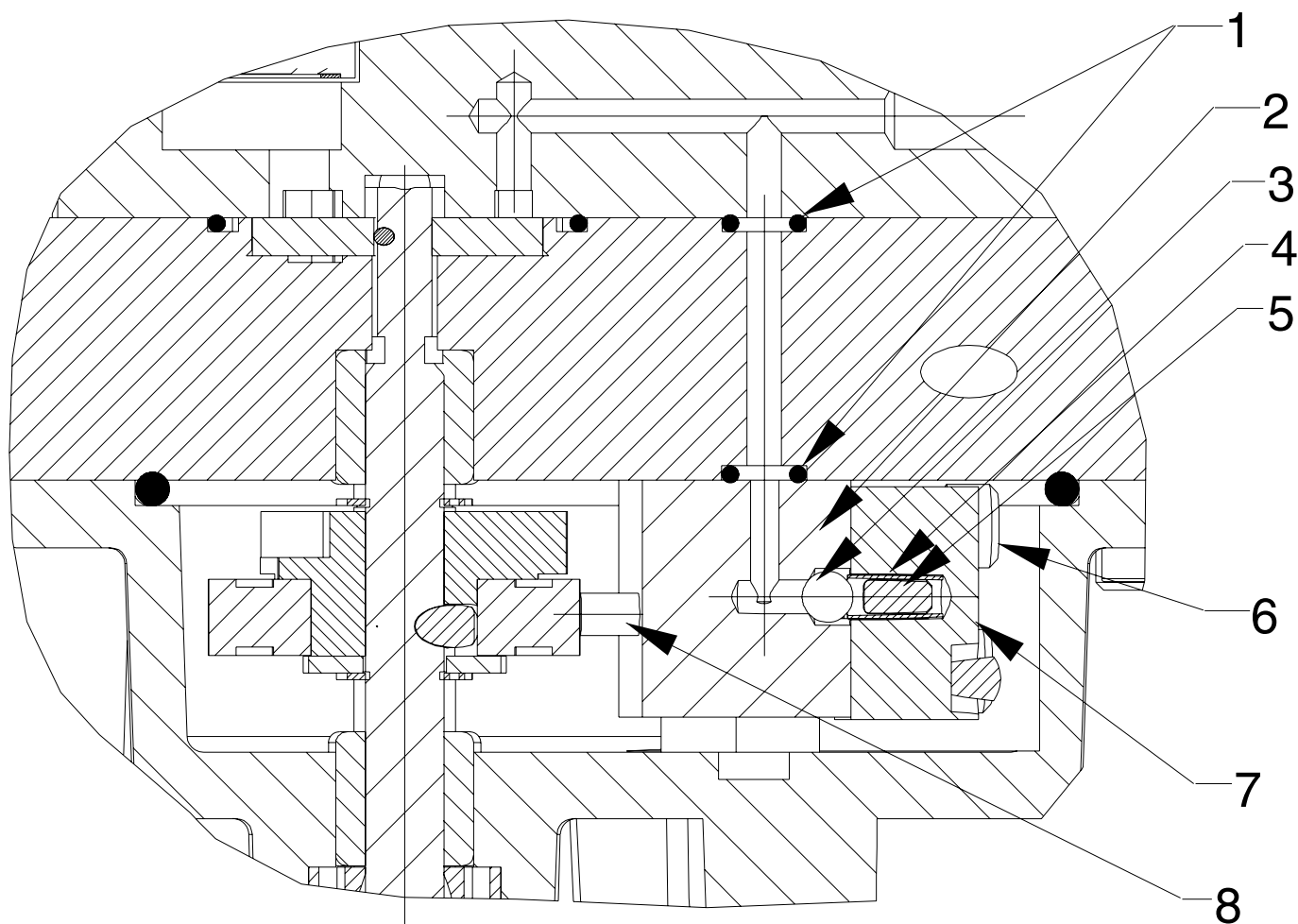
Part numbers marked with an asterisk (*) are contained in Repair Kit No. 300651.
 Part numbers marked with a dagger (†) are contained in EPR Seal Kit No. 300653.

MOTOR END VIEW



| Item No. | Part No. | No. Req'd | Description |
|----------|----------|-----------|---|
| 1 | 11434 | 3 | Screw (10-24 UNC X 1/2 Lg.; Torque to 60/80 in. lbs.) |
| 2 | 17567 | 2 | Pin |

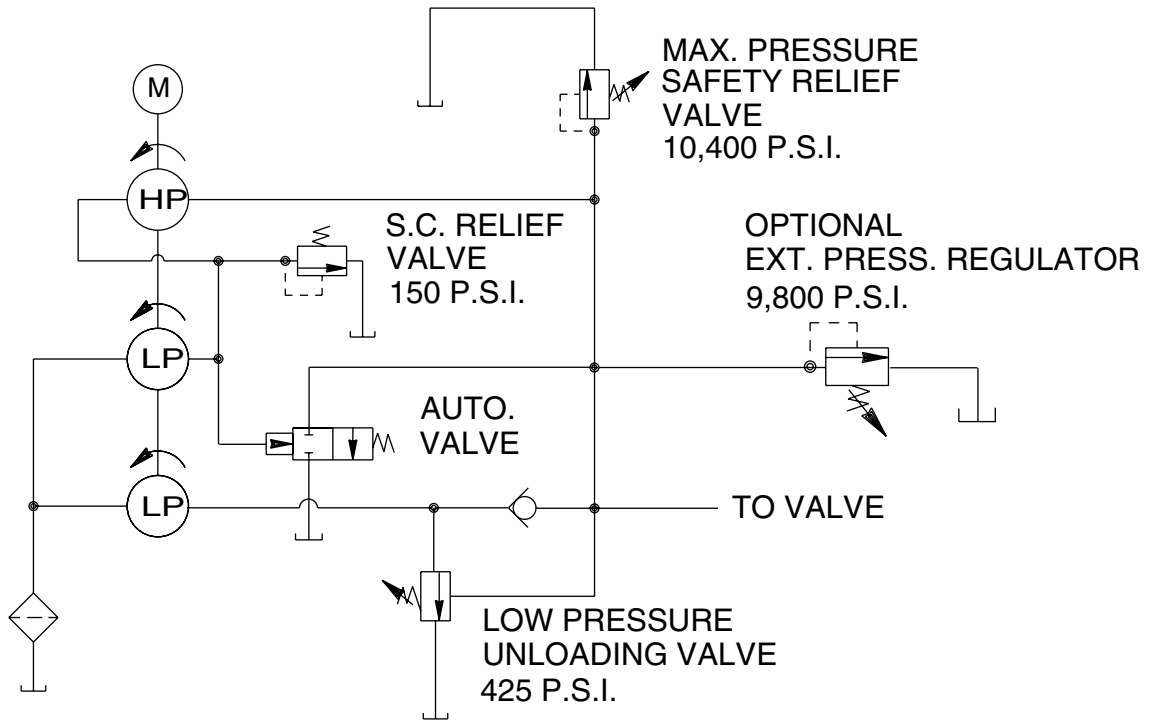
SECTION S-S



| Item No. | Part No. | No. Req'd | Description |
|----------|----------|-----------|--|
| 1 | *10265 | 3 | O-ring (5/16 X 3/16 X 1/16) |
| | †17714 | 3 | O-ring (5/16 X 3/16 X 1/16) |
| 2 | 420617 | 1 | High Pressure Piston Body |
| 3 | *12223 | 1 | Ball (3/16 Dia.) |
| 4 | *10445 | 1 | Compression Spring (5/32 O.D. X 3/4 Lg.) |
| 5 | 251040 | 1 | Dowel Pin |
| 6 | 12102 | 3 | Screw (#10-24 UNC X 3/4 Lg.; Torque to 60/80 in. lbs.) |
| 7 | 350620 | 1 | High Pressure Cap Body |
| 8 | 251062 | 1 | Piston (Position with chamfer towards bearing.) |

Part numbers marked with an asterisk (*) are contained in Repair Kit No. 300651.
 Part numbers marked with a dagger (†) are contained in EPR Seal Kit No. 300653.

HYDRAULIC SCHEMATIC



ELECTRICAL INFORMATION

Note: All electrical information and schematics for these units can be found in Form No. 102808 Operating Instructions.