

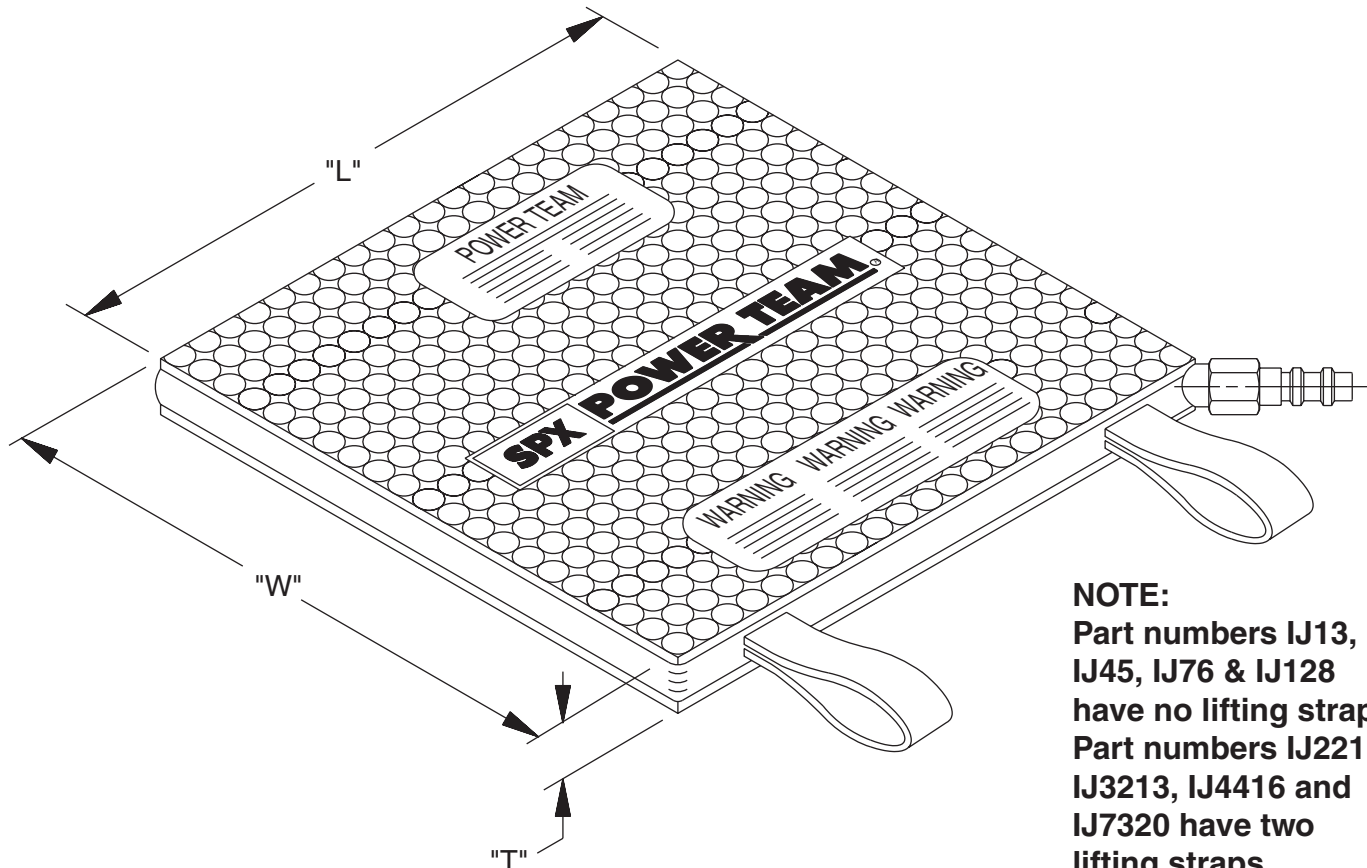
Parts List and

Operating Instructions for:



307159	350209	IJ128
350090	IJ13	IJ2211
350207	IJ45	IJ3213
350208	IJ76	IJ4416
		IJ7320

MODEL D
INFLATABLE JACKS
Aramid Fiber Reinforced
Max. Pressure: 116 PSI



NOTE:
Part numbers IJ13,
IJ45, IJ76 & IJ128
have no lifting straps.
Part numbers IJ2211,
IJ3213, IJ4416 and
IJ7320 have two
lifting straps.

SPECIFICATIONS

Part Number	IJ13	IJ45	IJ76	IJ128	IJ2211	IJ3213	IJ4416	IJ7320
Lifting Capacity* Tons (KN)	.99 (8.8)	3.45 (30.6)	6.83 (60.5)	12.29 (108.8)	241.7 (214.0)	36.94 (327)	46.77 (414)	76.48 (677)
Max. Working PSI (BAR)	116 (8)	116 (8)	116 (8)	116 (8)	116 (8)	116 (8)	116 (8)	116 (8)
Lifting Height IN (mm)	2.7" (68)	4.7" (119)	6.3" (160)	8.8" (225)	12" (304)	14" (360)	16.4" (418)	20.5" (520)
Length "L" IN (mm)	5.50" (139)	10.00" (254)	12.00" (304)	15.75" (400)	21.75" (550)	25.6" (650)	29.5" (750)	37.4" (950)
Width "W" IN (mm)	5.1" (129)	7.9" (200)	12.00" (304)	15.75" (400)	21.75" (550)	25.6" (650)	29.5" (750)	37.4" (950)
Collapsed Height "T" IN (mm)	1" (25.4)	1" (25.4)	1" (25.4)	1" (25.4)	1" (25.4)	1" (25.4)	1" (25.4)	1.2" (30.4)

* The maximum lifting capacity of the inflatable jack is rated at the collapsed height. When the jack is inflated, the effective area decreases, as does the lifting capacity. Refer to the chart on back sheet 1 of 5.

Note: Shaded areas reflect last revision(s) made to this form.

Sheet No. 1 of 5

Rev. 3 Date: 04 Sept 2002

LIFTING CAPACITY OF INFLATABLE JACKS

Lifting Height Inches (mm)	Lifting Capacity at 116 PSI (8 BAR) LBS. (KN)							
	IJ13	IJ45	IJ76	IJ128	IJ2211	IJ3213	IJ4416	IJ7320
0	1980 (8.8)	6885 (30.6)	13601 (60.5)	24459 (108.8)	48109 (214.0)	73513 (327)	93071 (414)	152196 (677)
2.7" (68.6)	0	1434 (6.38)	3867 (17.2)	10858 (48.3)	24729 (110)	46985 (209)	62047 (276)	107908 (480)
4.7" (119.4)		0	944 (4.2)	4878 (21.7)	13938 (62)	33721 (150)	46760 (208)	88575 (394)
6.3" (160.0)			0	1619 (7.2)	8093 (36)	23830 (106)	35070 (156)	71939 (320)
8.8" (223.5)				0	2923 (13)	12140 (54)	21132 (94)	50582 (225)
12" (304.8)					0	3822 (17)	6744 (30)	28326 (126)
14" (355.6)						0	2248 (10)	17985 (80)
16.4" (416.6)							0	7868 (35)
20.5" (520.7)								0

Definition: Lifting bags for lifting and lowering loads.

- Carefully inspect the inflatable jack upon arrival. The carrier, not the manufacturer, is responsible for any damage resulting from shipment.
- These instructions should be read and carefully followed. Most problems with new equipment are caused by improper operation or installation.

SAFETY EXPLANATIONS

Two safety symbols are used to identify any action or lack of action that can cause personal injury. Your reading and understanding of these safety symbols is very important.



DANGER

Danger is used only when your action or lack of action will cause serious human injury or death.



WARNING

is used to describe any action or lack of action where a serious injury can occur.

IMPORTANT - Important is used when action or lack of action can cause equipment failure, either immediate or over a long period of time.

Note: Shaded areas reflect last revision(s) made to this form.

SAFETY PRECAUTIONS

These instructions must be read and carefully followed before operating an inflatable jack. Most problems are caused by improper operation or installation.



DANGER

- Always use a pressure regulator to control inlet pressure to 116 PSI or less to help prevent over-pressurizing the inflatable jack. Never exceed the maximum operating pressure or maximum recommended stroke of an inflatable jack.
- Stay clear of the load being lifted to help prevent personal injury.
- Do not add a load to an already lifted load.



WARNING

- Only trained and qualified personnel should use an inflatable jack.
- Always wear eye protection when using inflatable jacks.
- Use compressed air or water to inflate a jack. NEVER use oxygen or other explosive gases!
- To help prevent accidental uncoupling and deflation of a jack, place all system quick couplers in the locked position after joining by rotating the collar on the socket so the collar groove is out of alignment with the collar pin.
- Keep the surface of the inflatable jack clean to maximize grip during a lift.
- Avoid placing the inflatable jack on surfaces that can damage the jack and cause the load to lower unexpectedly. Plywood or steel plates no smaller than the surface of the jack should be used next to jack surface to protect them.
- Follow any load being lifted with the appropriate cribbing to support the load. Use only cribbing which will not slip.
- The inflatable jack must always be next to the load being lifted to help prevent slippage. If needed, suitable cribbing should be placed under the inflatable jack for stability. Never place anything between an inflatable jack and the load except protection to prevent sharp objects from penetrating the jack. See Figure 1.
- For control and stability of the load when stacking a MAXIMUM of two inflatable jacks, always inflate the lower jack first until contact is made with the load. Then inflate both jacks evenly. See Figure 1.
- Never expose inflatable jacks to temperatures lower than -40° F or higher than 230° F.

IMPORTANT:

- An air filter is strongly recommended to protect the jack from any internal damage.

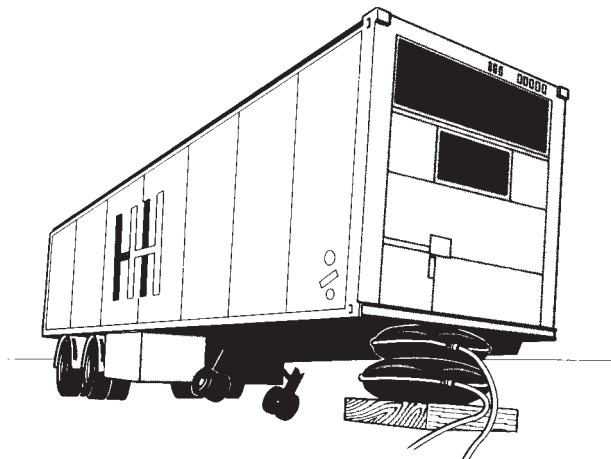


Figure 1

OPERATING INSTRUCTIONS

Note: Power Team inflatable jacks are suitable for use at temperatures of -40° F to 200° F. Short term exposure at temperatures up to 230° F is acceptable. Materials used in the jacks construction are resistant to oil and ozone. They also resist most chemicals.

1. Set the pressure regulator valve at 0 PSI.
2. Connect the pressure regulator to the pressure source.
3. Connect the hand control valve to the pressure regulator. **Note: The control valve is a "dead man" type, and will remain off until the ADVANCE or RETRACT button is pressed.**
4. Connect the inflatable jack to the hand control valve, locking the quick coupler collar to help prevent possible accidental uncoupling. **Note: If the pressure source will be intentionally disconnected from the inflatable jack while the load is being supported, install a shut-off hose assembly between the jack and the hand control valve. Open the shut-off valve.**
5. Adjust the pressure regulator output pressure to 116 PSI or less.
6. To lift the load, depress and hold the ADVANCE button on the hand control valve to inflate the jack. If it is necessary to disconnect the jack from the pressure source, close the valve on the shut-off hose that was installed in Step #4. Bleed pressure from the system at the control valve before disconnecting the jack.
7. To lower the load, slowly release the pressure from the system by depressing and holding the RETRACT button on the hand control valve until the jack is completely deflated.
8. To disconnect the system, release the system pressure to very near 0 PSI by depressing the RETRACT button on the hand control valve. The system can then be disconnected at any point between the pressure regulator and the inflatable jack.

MAINTENANCE

Inspect the equipment after each use. Keep all couplers and valves clean. Keep the surface of the inflatable jack clean to insure that the jack will have sufficient grip during a lift.

Check all hoses, valves, and gauges periodically. Repair and replace when necessary.

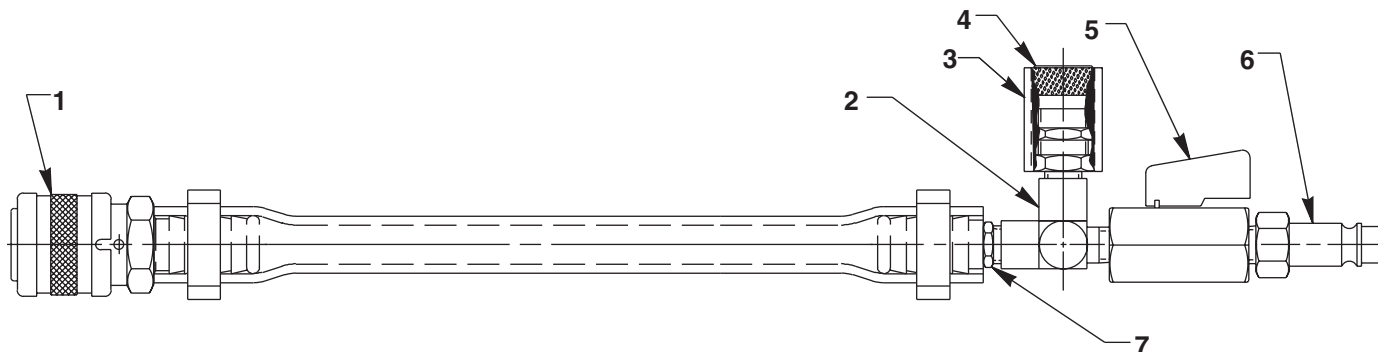
COUPLER INTERCHANGE CHART

	COUPLER SOCKET		COUPLER PLUG
	3/8" HOSE BARB	1/8" FEMALE PIPE	253036
POWER TEAM	250341	250343	<p style="text-align: center;">Must use coupler plug supplied with inflatable jack!</p> <p style="text-align: center;">No other coupler plugs will attach.</p> <p style="text-align: center;">All socket halves listed will mate with the coupler supplied.</p>
AEROQUIP	-	FD43-1001-02-04	
AMFLO-DIXON	C20-44	C20-21	
ARO	-	-	
DYNAQUIP	D-362	D-320	
FOSTER	BL3703	BL2803	
HANSEN	1700	800	
HOFMANN	SA3	FA1	
MILTON	717-6	707	
PARKER	B20-5B	B23A	
PSC	2FS3	2FF1	
SCHRADER	55-3240	55-3000	
SNAPTITE	36C4-6H	36C4-2F	
TOMCO	M187	M183	

CATALOG ACCESSORIES

#350207 Shut-off Hose Assembly

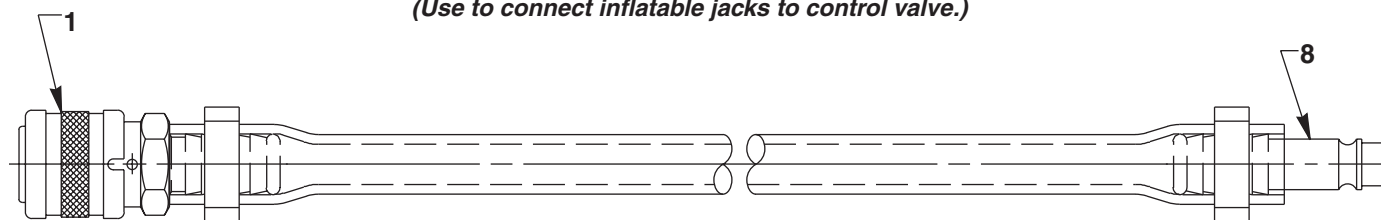
(Allows the pressure source to be disconnected from the inflatable jack while the jack supports the load.)



#350208 Red Hose Assembly

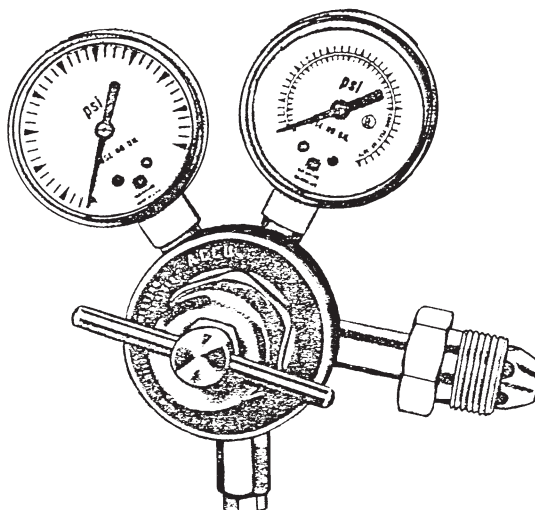
#350209 Blue Hose Assembly

(Use to connect inflatable jacks to control valve.)

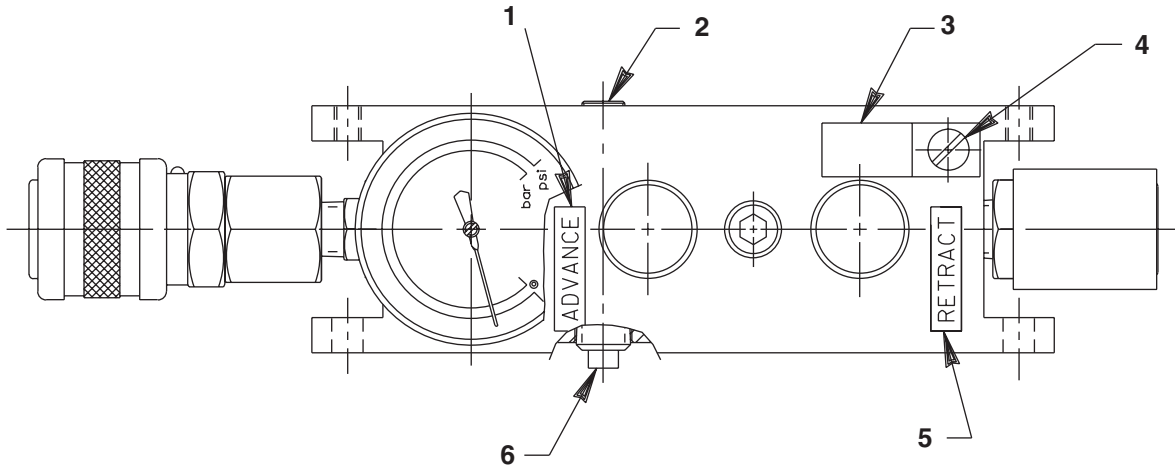


Item No.	Part No.	No. Req'd	Description
1	250341	1	Quick Coupler (Female - 3/8 I.D. Hose)
2	18969	1	Tee Fitting
3	19441	1"	Heat Shrink Tubing
4	250148	1	Adjustable Relief Valve
5	250129	1	Two-way Ball Valve
6	250353	1	Quick Coupler (Male - 3/8 I.D. Hose)
7	250130	1	Air Quick Coupler (Male - 1/8 NPT x 3/8 dia. hose)
8	250342	1	Quick Coupler (Male - 3/8 I.D. Hose)

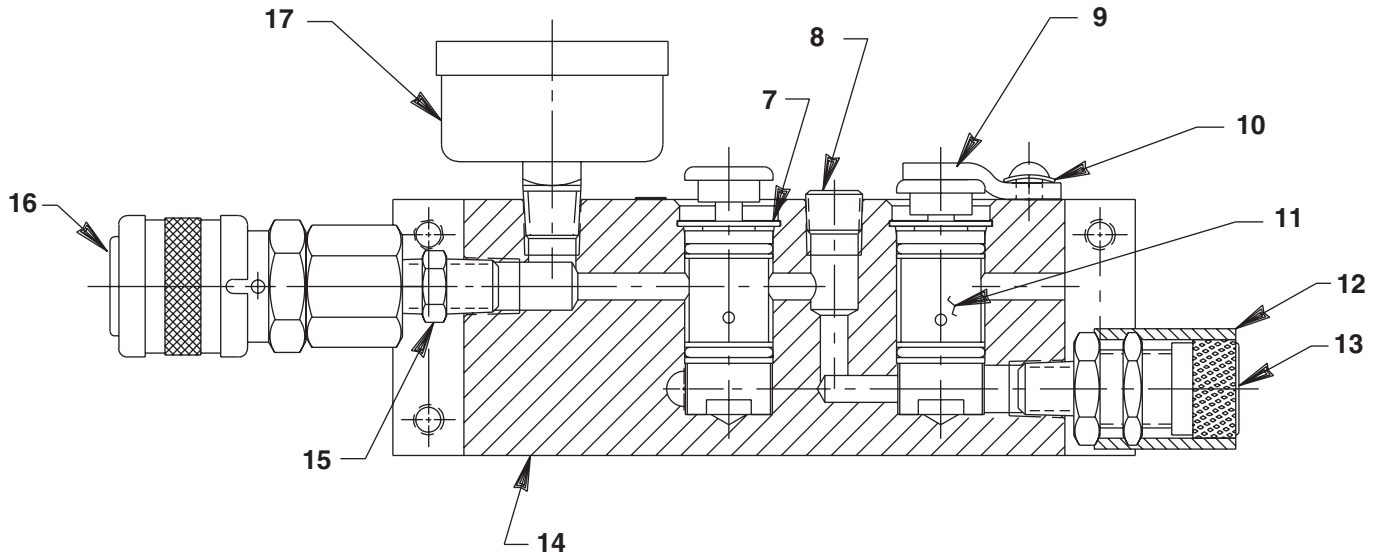
**#307159 Pressure
Regulating Valve**
NOTE: Air outlet is 1/4" NPTF.



#350090 Air Operated Hand Control



(Air Inlet
1/8 NPT Female)



Item No.	Part No.	No. Req'd	Description
1	29663	1	Decal (Advance)
2	11084	1	Hex Plug (1/16 NPTF)
3	250187	1	Lever
4	10429	1	Slotted Rnd. Hd. Machine Screw (#8-32UNC x 1/2 Lg.; NOTE: Tighten screw until lever encounters resistance with spring washer and stops turning freely. Do not bottomout screw or crush spring washer. Secure screw with Loctite #277.)
5	29664	1	Decal (Retract)
6	11048	1	Hex Plug (1/8 NPTF)
7	11033	2	Retaining Ring (5/8 bore)
8	10427	1	Hex Plug (1/8 NPTF)
9	206105	2	Pushbutton
10	12187	1	Spring Washer (No. 10)
11	250226	2	2-way Poppet Valve Cartridge (Includes seals)
12	19441	1	Heat Shrink Tube (Heat shrink over item #13)
13	250148	1	Pressure Relief Valve (1/8 NPT; NOTE: Do NOT adjust!)
14	58037	1	Valve Body
15	11421	1	Straight Fitting (1/8 NPTF)
16	250343	1	Quick Coupler (Female)
17	420078	1	Pressure Gauge (160 PSI, 1/8 NPT)

PARTS INCLUDED BUT NOT SHOWN

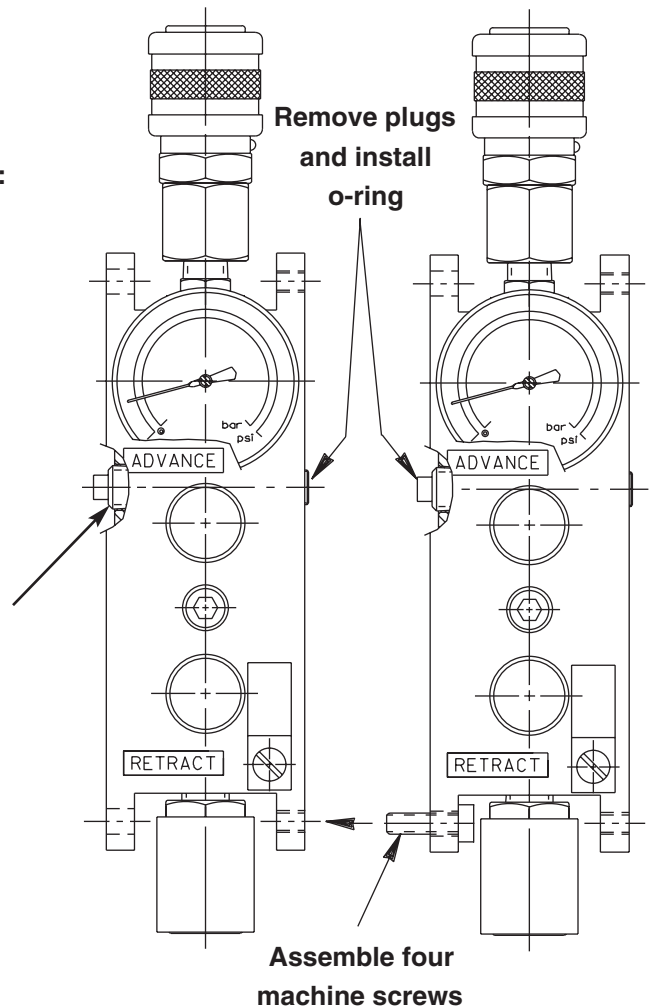
10270	1	O-ring (5/8 x 7/16 x 3/32)
250291	4	Hex Hd. Cap Screw (#10-24 UNC x 1/2 Lg.)

ASSEMBLY OF MULTIPLE CONTROLS

To assemble hand controls for dual (or more) applications:
Refer to illustration at right.

1. Remove hex plug (11048) from one hand control and hex plug (11084) from another hand control.
2. Place o-ring (10270; shipped loose with hand control) in one of the ports revealed by removing the hex plug.
3. Place hand controls together, aligning the two ports, and secure with the four machine screws provided.

Air Inlet
1/8 NPT Female



TYPICAL HOOK-UP and PART NO. REFERENCE

