

hydraulic spreader FLS15

Introducing the NEW FLS15 Hydraulic Spreader

SPX Bolting Systems is pleased to introduce the FLS15 hydraulic spreader. This unit is ideal for pipe and flange repair. It can also be used for removing elbows, gasket and metal seal replacement on couplers, heavy equipment maintenance, and many other tasks. The spreader is capable of developing up to 15 metric tons of force, is light-weight (only 7 lbs. [3.2 kg]), and easy to use due to its ergonomic design.

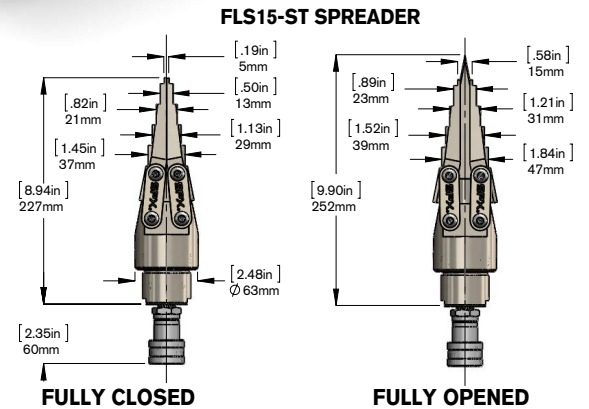
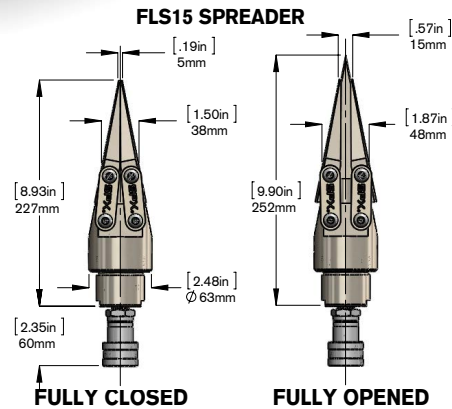
FEATURES AND BENEFITS:

- 33,000 pound (15 metric ton) wedge-driven spreader
- Jaws fully supported by wedge for excellent durability
- Low friction provided by heavy-duty extended-life lubricant
- Ideal for flanges with narrow gaps - only .2 inches (5 mm) required for entry
- Very high strength due to special alloy used
- Compact and lightweight design - only 9.9 inches (252 mm) long at a weight of 7 pounds (3.2 kg)
- Easy to use - ergonomically balanced handle
- Suitable for the offshore environment due to superior corrosion resistance
- Quick adjustments for various tasks due to interchangeable shoes (both stepped and serrated)
- Easy and quick maintenance - no special tools required
- Includes female half coupler - mates to standard 3/8" male half coupler (9798).
- Both serrated- and stepped-shoe versions available

FLS15 VERSION WITH SERRATED SHOES—WEDGE FULLY OPENED



FLS15—ST VERSION WITH STEPPED SHOES—WEDGE CLOSED



Item Number	Maximum Spreading Force	Minimum Tip Clearance	Maximum Tip Spread	Spreader Type	Oil Capacity	Weight	Maximum Operating Pressure
FLS15 or FLS15-ST	33,000 Pounds (15 Metric Tons)	.197 Inches (5 mm)	.59 Inches (15 mm)	Hydraulic	1 Cubic Inch (16 cc)	7 Pounds (3.2 kg)	10,000 psi (700 bar)

HYDRAULIC SPREADER FLS15

This hydraulic spreader operates using the integrated wedge concept. It is ideal for creating space for flange surface cleaning and repair, and for gasket replacement. The spreader is single-acting, and should be used with a hydraulic pump capable of holding pressure. Maximum operating pressure is 10,000 psi (700 bar).

Spreading force:

Maximum 33,000 pounds (15 metric tons) per tool at 10,000 psi (700 bar). It is recommended that the tools be used in pairs, providing a maximum combined force of 66,000 pounds (30 metric tons).

Typical Applications:

- Pipe and flange repair
- Removing elbows
- Couplers - gasket and metal seal replacement
- Heavy equipment maintenance



AVAILABLE FLS15 ACCESSORIES:



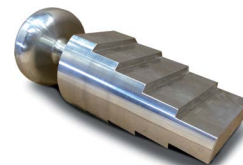
Handle
Part Number 2008410



Stepped Shoe
Part Number 2008083*



Serrated Shoe
Part Number 2008082*



Stepped Block
Part Number SB15

*Part number is for one shoe only. Two shoes required per spreader.

RECOMMENDED COMPLIMENTARY POWER TEAM COMPONENTS:



Pump



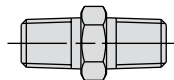
Manifold with Needle Valves



Coupler



Female Half Coupler



Male Connector



Hose



Gauge



Gauge Adapter

RECOMMENDED COMPONENTS

Description	Part Number (Americas & Asia)	Part Number (Europe)
Two Speed, Single-Acting Hand Pump	P19L	P19L
Hydraulic Hose Assembly	9764	9764E
Pressure Gauge	9040	9040E
Gauge Adapter	9670	9670
Coupler (male half coupler)	9798	9798
Manifold with Needle Valves	9642	9642
Female Half Coupler	9796	9796
Male Connector, 3/8	9682	9682

Note: Torque wrench tools use smaller couplers. Do not attempt to use torque wrench hoses with this tool.

CUSTOMER SERVICE CENTERS

Houston

3030 E. Pasadena Frwy
Pasadena, TX 77503 USA
Tel: +1 713 472 2500
Fax: +1 713 472 2501
houston@spxboltingsystems.com

European Headquarters

Albert Thijsstraat 12
6471 WX Eygelshoven
The Netherlands
Tel: +31 45 567 8877
Fax: +31 45 567 8878
europe@spxboltingsystems.com

Asia Pacific Headquarters

26 Soon Lee Road
Singapore 628086, Singapore
Customer Service
Tel: +65 6265 3343
Fax: +65 6265 6646
singapore@spxboltingsystems.com

Shanghai, China

No. 1568 Hua Shan Road
Treasury Building, 11th Floor
Shanghai 200052, China
Tel: +86 21 2208 5888
Fax: +86 21 2208 5682
china@spxboltingsystems.com

Rockford, Illinois USA

5885 11th Street
Rockford, IL 61109 USA
Tel: +1 815 874 5556
Fax: +1 800 288 7031
info@spxboltingsystems.com

Aberdeen, UK

Howemoss Drive
Kirkhill Industrial Estate
Dyce AB21 0GL
Tel: +44 1224 722 895
Fax: +44 1224 729 712
Aberdeen@spxboltingsystems.com

Perth, Australia

Unit 1 / 11, Karratha Street
Welshpool, 6106
Perth, Western Australia
Tel: +61 8 9358 6699
Fax: +61 8 9358 6700
australia@spxboltingsystems.com