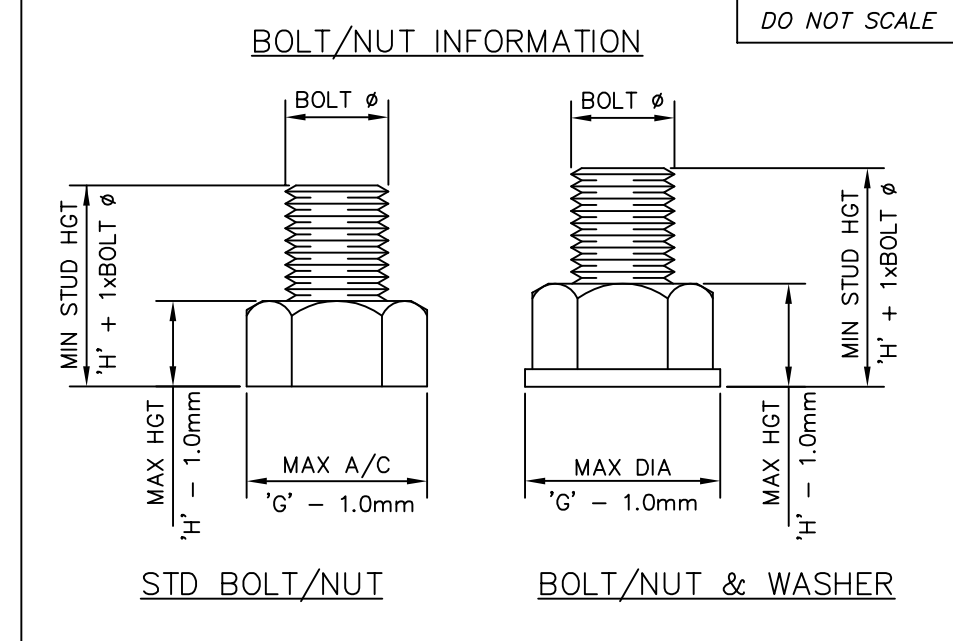
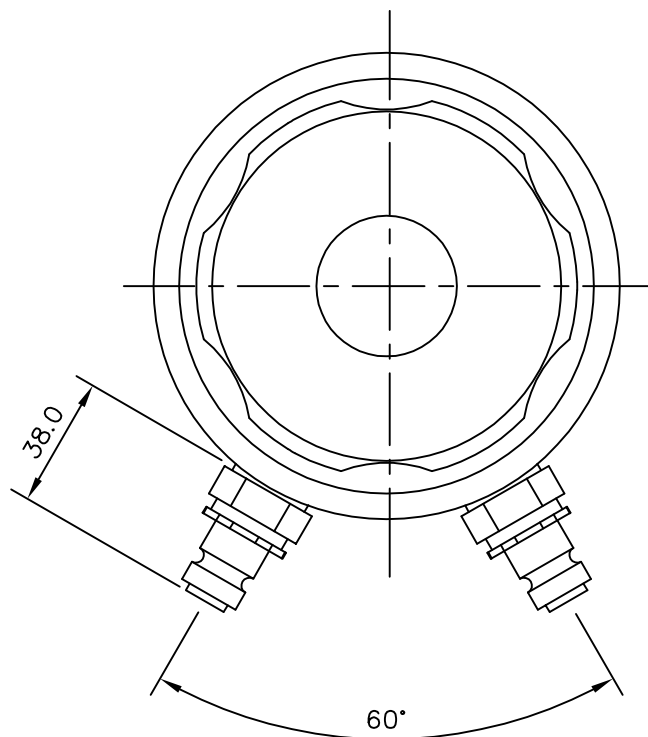
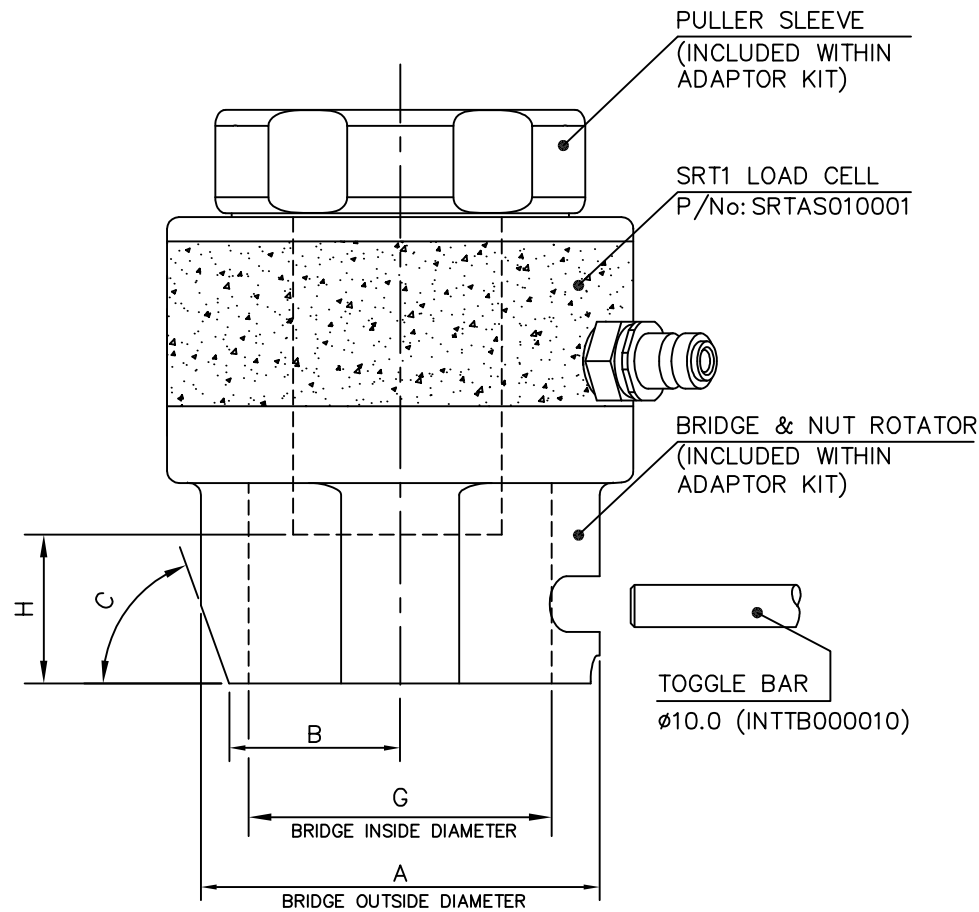
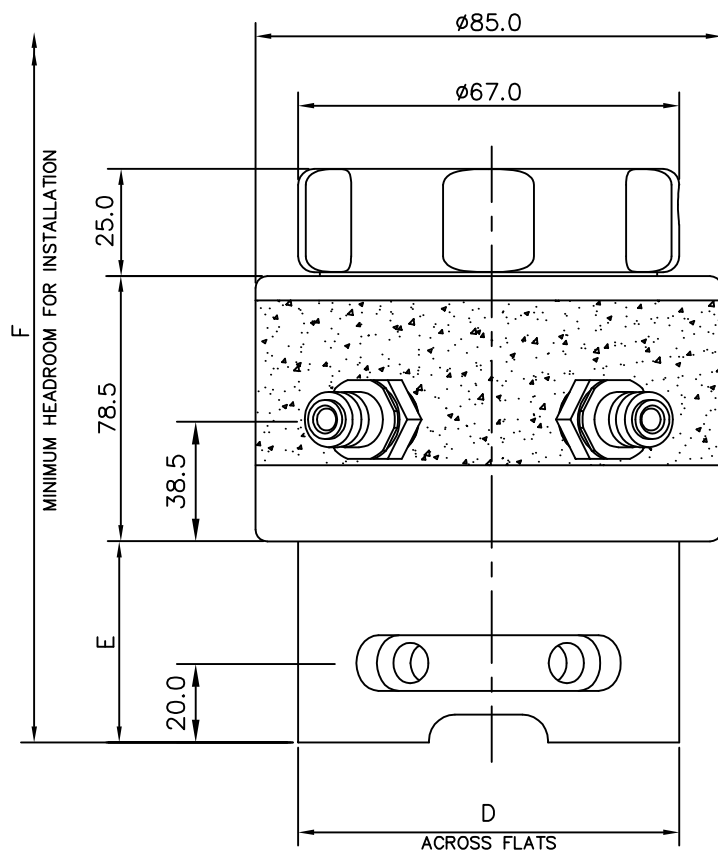


Dimensions in MILLIMETRES



SRT1 TENSIONER SPECIFICATIONS

- MAX WORKING PRESSURE : 1500 Bar (21,750 psi)
- MAX STROKE : 10 mm (0.394")
- HYDRAULIC AREA : 1867 mm² (2.89 in²)
- LOAD AT MWP : 280 kN (62950 lbf)

TENSIONER FEATURES

- AUTOMATIC SPRING RETURN PISTON
- OVERSTROKE ELIMINATOR VALVE
- PISTON STROKE INDICATOR
- QUICK CONNECT ADAPTOR KIT

BOLT DIA	NUT A/F	ADAPTOR KIT PART NUMBER	A mm	B mm	C mm	D mm	E mm	F mm	G mm	H mm
1" 8UN	1-5/8"	SRTAS010003	68.0	28.0	70*	-	38.0	177.0	50.5	30.0
1-1/8" 8UN	1-13/16"	SRTAS010005	76.0	31.0	75*	-	41.0	183.0	55.5	33.0
M24 x 3.0	36mm	SRTAS010007	68.0	28.0	70*	-	38.0	175.0	50.5	23.0
M27 x 3.0	41mm	SRTAS010009	68.0	28.0	70*	-	38.0	178.0	50.5	26.0

NOTE: METRIC ADAPTOR KITS DESIGNED TO SUIT NUTS TO BS3692 (i.e. NUT HEIGHT APPROX 0.8 x BOLT DIA)

© SPX Bolting Systems

The information on this sheet is on licence to SPX Bolting Systems. It is confidential and must only be used for the purpose for which it is supplied. It must not be copied or communicated to any third party without permission in writing from SPX Bolting Systems.

General Tol. ±0.25 USO	Quantity -	Material -	Heat Treatment -	Finish Processes -
Surface Finish 3.2 µm USO	Drawn by I.O'BRIEN		Checked by D.CAMPBELL	Date 04/06/2013
Geometric Tol. ◎ 0.10 // 0.20 ⊕ 0.25	File Name -		Scale NTS	Title SRT1 HYDRAULIC TENSIONER GA
Drawing Number SRTGA010001			Edition 1	Sheet 1/1

1	BOLT DATA ADDED	25/9/13	D.CAMPBELL	A.DONALDSON
Rev	Revision Description	Date	Signature	Checked