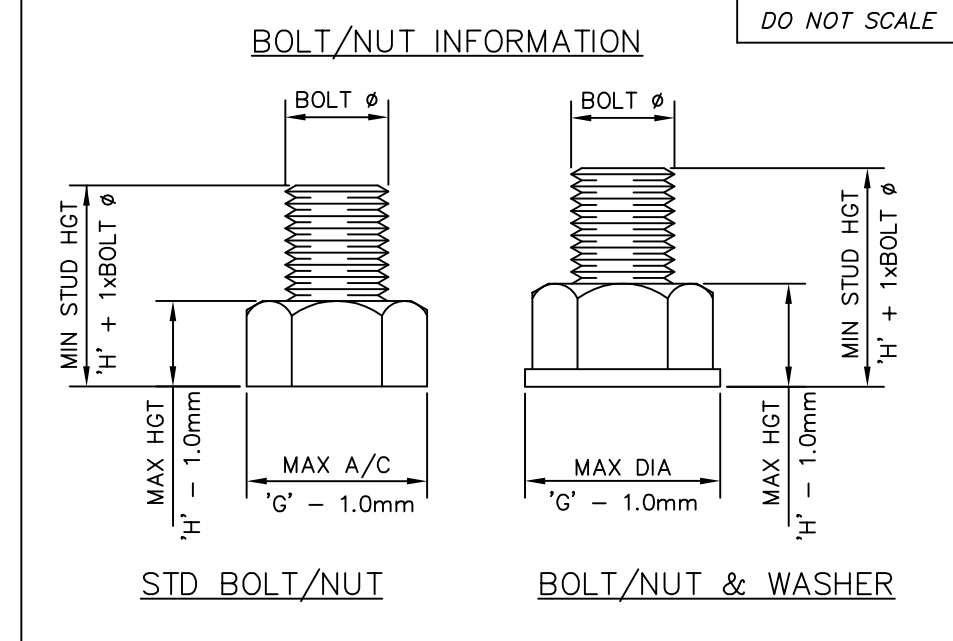
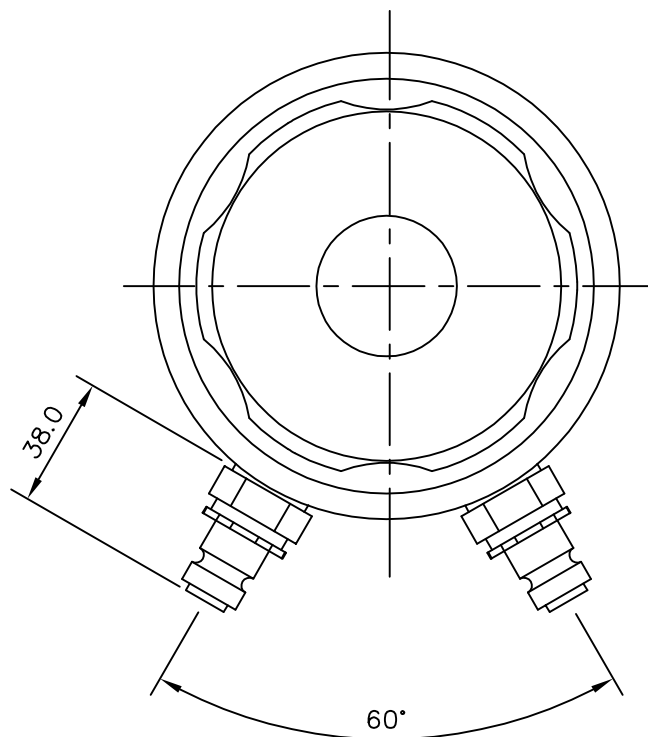
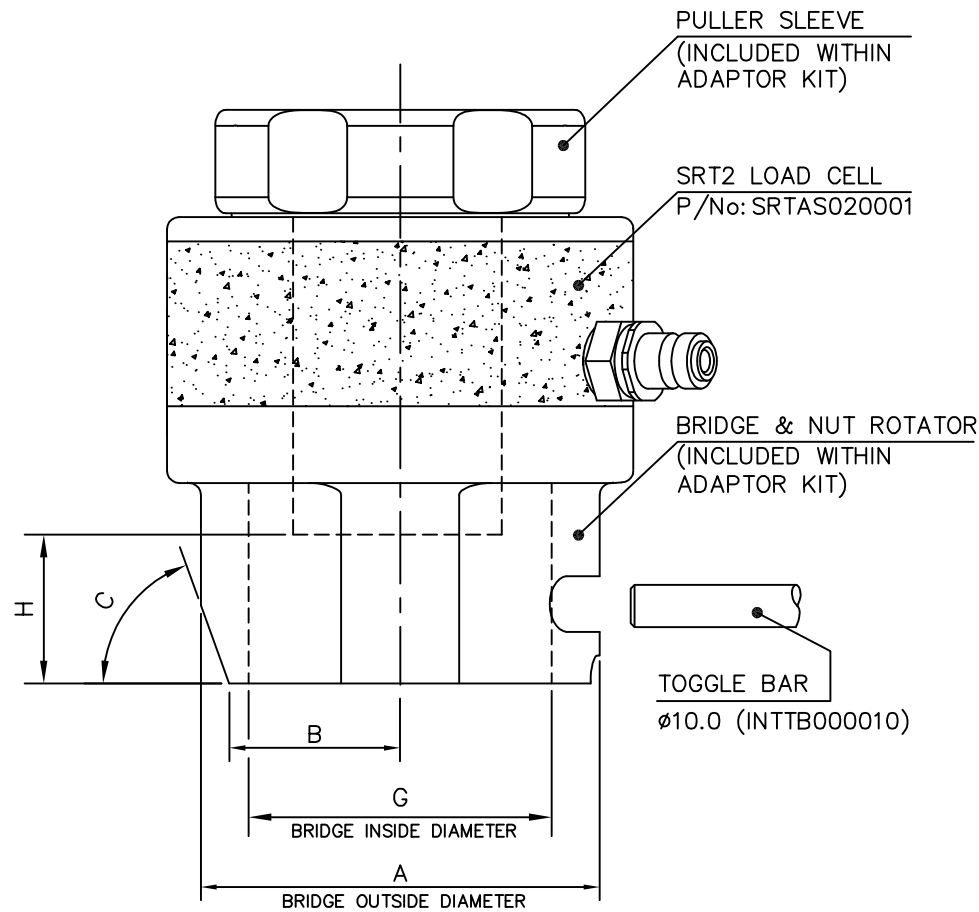
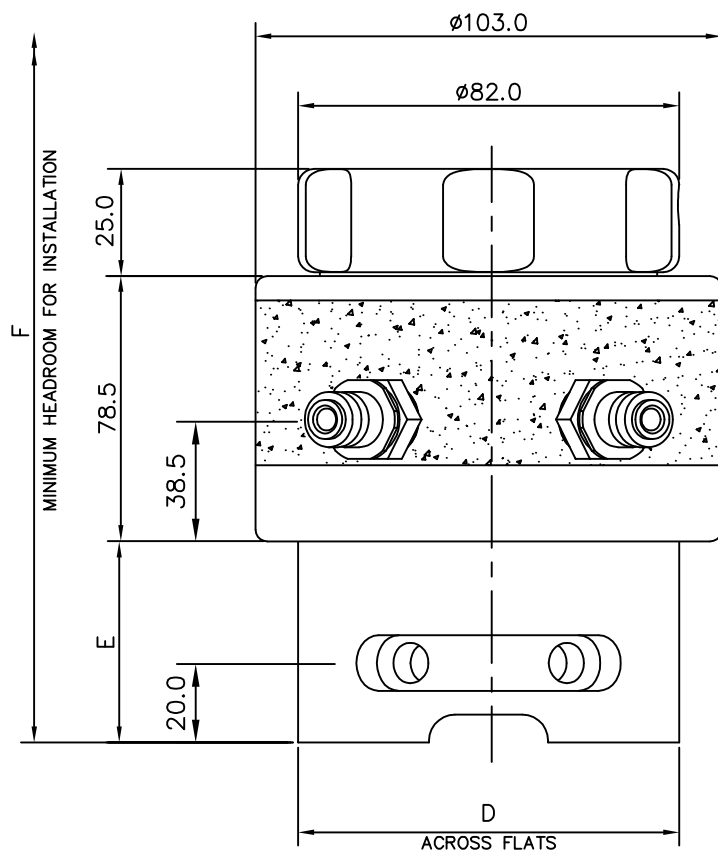


Dimensions in MILLIMETRES



SRT2 TENSIONER SPECIFICATIONS

- MAX WORKING PRESSURE : 1500 Bar (21,750 psi)
- MAX STROKE : 10 mm (0.394")
- HYDRAULIC AREA : 3001 mm² (4.65 in²)
- LOAD AT MWP : 450 kN (101169 lbf)

TENSIONER FEATURES

- AUTOMATIC SPRING RETURN PISTON
- OVERSTROKE ELIMINATOR VALVE
- PISTON STROKE INDICATOR
- QUICK CONNECT ADAPTOR KIT

BOLT DIA	NUT A/F	ADAPTOR KIT PART NUMBER	A mm	B mm	C mm	D mm	E mm	F mm	G mm	H mm
1" 8UN	1-5/8"	SRTAS020003	75.0	30.0	60°	-	38.0	175.0	50.5	30.0
1-1/8" 8UN	1-13/16"	SRTAS020005	80.0	30.0	60°	-	41.0	181.0	55.5	33.0
1-1/4" 8UN	2"	SRTAS020007	84.0	35.0	70°	-	44.0	188.0	62.0	36.0
1-3/8" 8UN	2-3/16"	SRTAS020009	88.5	38.0	63°	-	47.0	191.0	67.5	39.0

M24 x 3.0	36mm	SRTAS020011	75.0	30.0	60°	-	38.0	175.0	50.5	23.0
M27 x 3.0	41mm	SRTAS020013	75.0	30.0	60°	-	38.0	178.0	50.5	26.0
M30 x 3.5	46mm	SRTAS020014	80.0	30.0	60°	-	41.0	184.0	55.5	28.0
M33 x 3.5	50mm	SRTAS020015	84.0	35.0	70°	-	44.0	190.0	62.0	30.0
M36 x 4.0	55mm	SRTAS020016	88.5	38.0	63°	-	47.0	196.0	67.5	33.0

NOTE: METRIC ADAPTOR KITS DESIGNED TO SUIT NUTS TO BS3692 (i.e. NUT HEIGHT APPROX 0.8 x BOLT DIA)
 © SPX Bolting Systems

The information on this sheet is on licence to SPX Bolting Systems. It is confidential and must only be used for the purpose for which it is supplied. It must not be copied or communicated to any third party without permission in writing from SPX Bolting Systems.

General Tol. ±0.25 US0	Quantity -	Material -	Heat Treatment -	Finish Processes -
Surface Finish 3.2 µm US0	Drawn by I.O'BRIEN		Checked by D.CAMPBELL	Date 04/06/2013
Geometric Tol. ◎ 0.10 // 0.20 ⊕ 0.25	File Name -		Date 04/06/2013	Scale NTS
SPX			Title SRT2 HYDRAULIC TENSIONER GA	
Drawing Number SRTGA020001			Edition 1	Sheet 1/1

Rev	Revision Description	Date	Signature	Checked
1	BOLT DATA ADDED	25/9/13	D.CAMPBELL	I.O'BRIEN