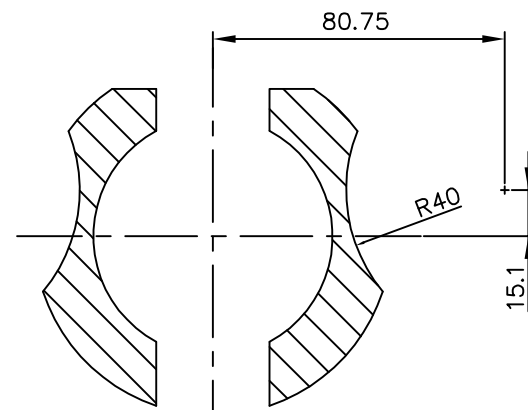
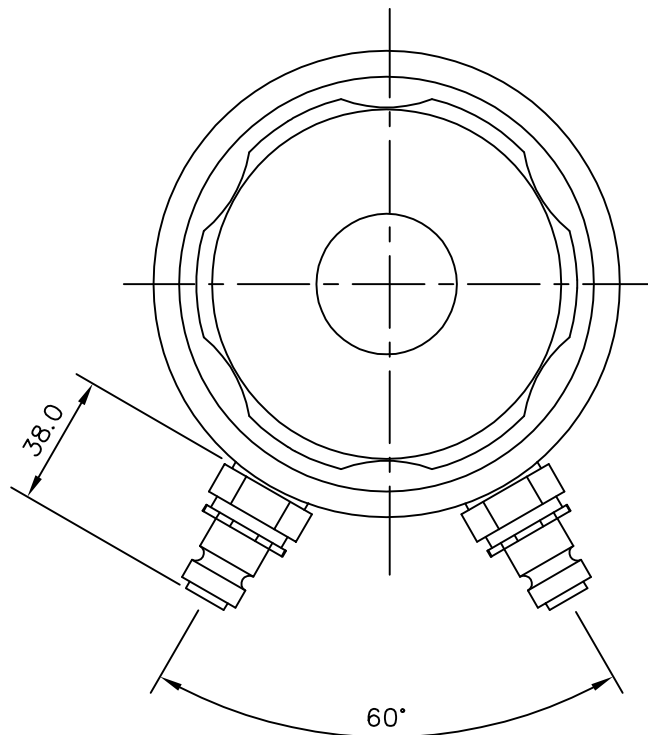
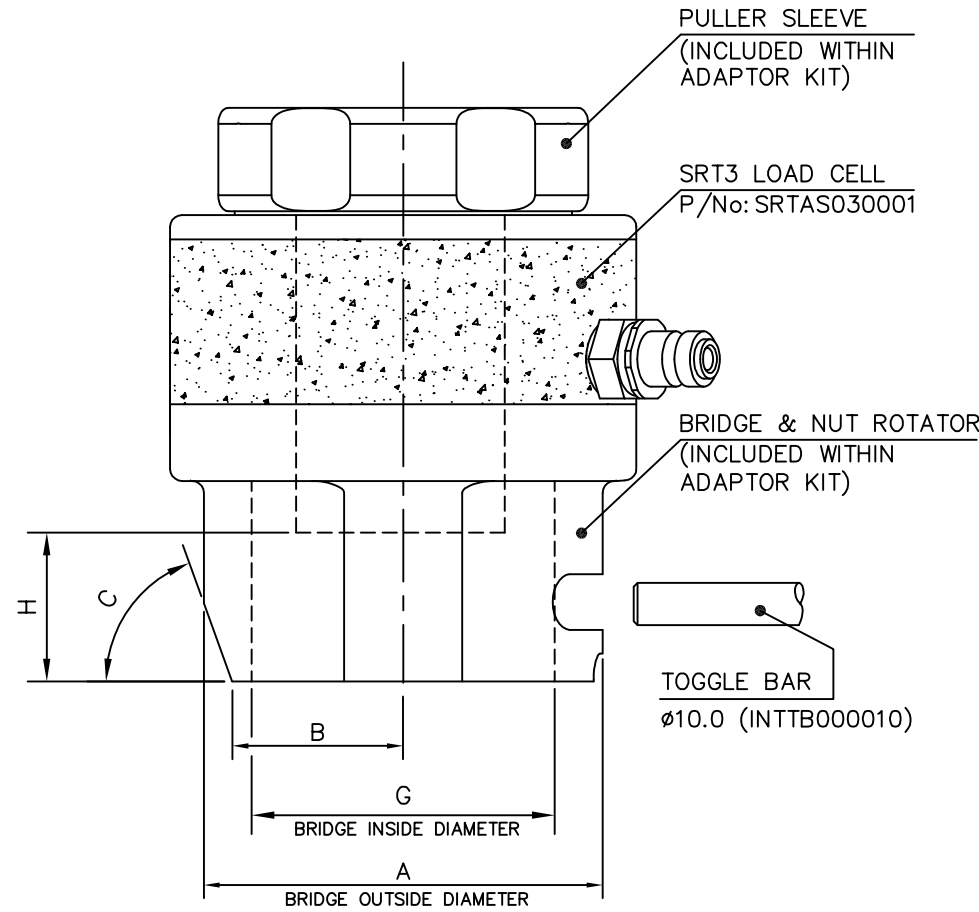
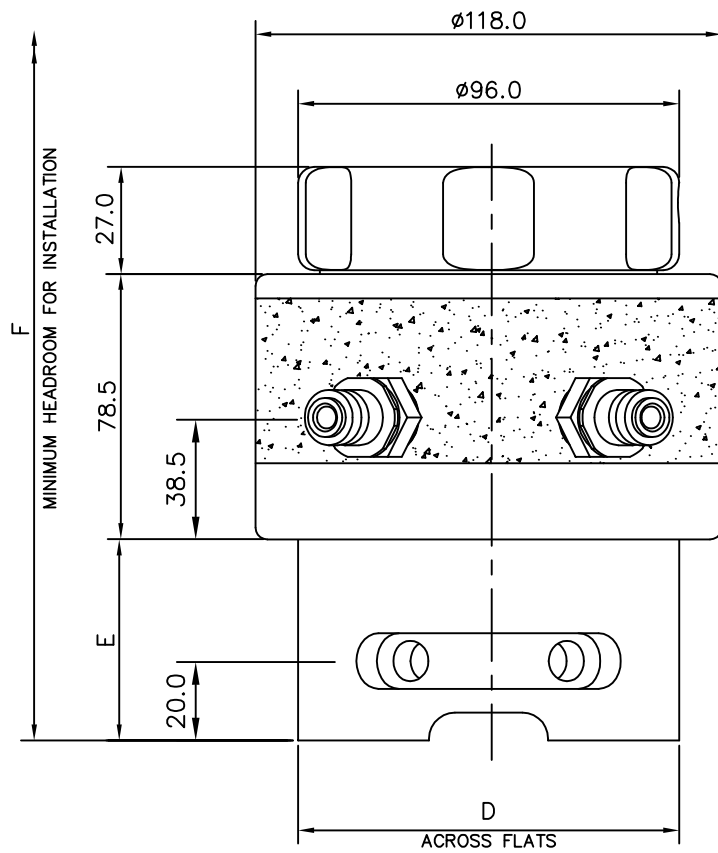


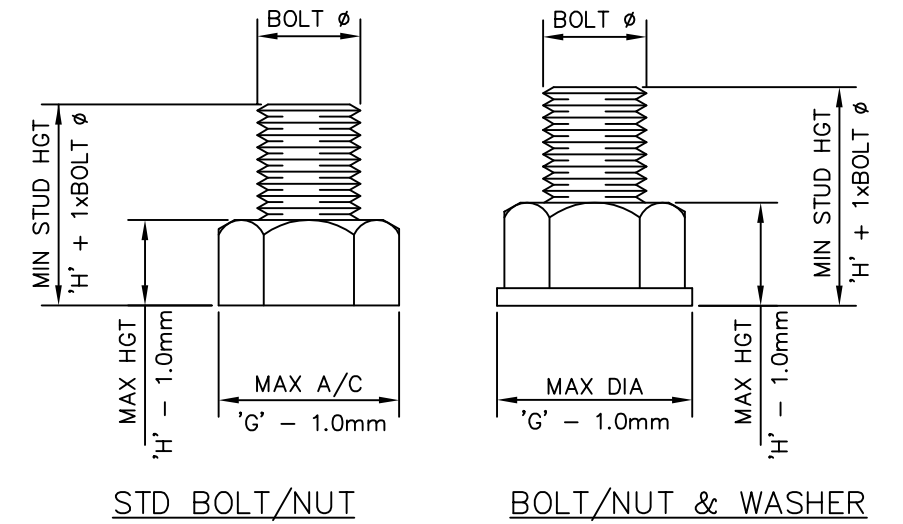
Dimensions in MILLIMETRES



DETAIL A
SRT3 1-1/2"/M39 BRIDGE
FOOTPRINT DETAIL 2010 ONWARD
(PREVIOUS DESIGN $\phi A=100.5$, $D=96.0$)

BOLT/NUT INFORMATION

DO NOT SCALE



SRT3 TENSIONER SPECIFICATIONS

- MAX WORKING PRESSURE : 1500 Bar (21,750 psi)
- MAX STROKE : 10 mm (0.394")
- HYDRAULIC AREA : 4401 mm² (6.82 in²)
- LOAD AT MWP : 660 kN (148381 lbf)

TENSIONER FEATURES

- AUTOMATIC SPRING RETURN PISTON
- OVERSTROKE ELIMINATOR VALVE
- PISTON STROKE INDICATOR
- QUICK CONNECT ADAPTOR KIT

BOLT DIA	NUT A/F	ADAPTOR KIT PART NUMBER	A mm	B mm	C mm	D mm	E mm	F mm	G mm	H mm
1-1/4" 8UN	2"	SRTAS030003	92.0	35.0	65*	88.0	44.0	190.0	62.0	36.0
1-3/8" 8UN	2-3/16"	SRTAS030005	96.0	38.0	63*	-	47.0	197.0	67.5	39.0
1-1/2" 8UN	2-3/8"	SRTAS030007	105.0	42.0	68*	DETAIL A	50.5	203.0	73.5	42.5
1-5/8" 8UN	2-9/16"	SRTAS030009	104.5	41.0	59*	-	53.5	209.0	79.0	45.5

M33 x 3.5	50mm	SRTAS030011	92.0	35.0	65*	88.0	44.0	192.0	62.0	30.0
M36 x 4.0	55mm	SRTAS030012	96.0	38.0	63*	-	47.0	198.0	67.5	33.0
M39 x 4.0	60mm	SRTAS030013	105.0	42.0	68*	DETAIL A	50.5	204.0	73.5	35.5
M42 x 4.5	65mm	SRTAS030014	104.5	41.0	59*	-	53.5	211.0	79.0	38.0

NOTE: METRIC ADAPTOR KITS DESIGNED TO SUIT NUTS TO BS3692 (i.e. NUT HEIGHT APPROX 0.8 x BOLT DIA)

© SPX Bolting Systems

The information on this sheet is on licence to SPX Bolting Systems. It is confidential and must only be used for the purpose for which it is supplied. It must not be copied or communicated to any third party without permission in writing from SPX Bolting Systems.

General Tol.	Quantity	Material	Heat Treatment	Finish Processes
±0.25 US0	-	-	-	-
Surface Finish	Drawn by: I.O'BRIEN Checked by: D.CAMPBELL File Name: - Date: 04/06/2013 Scale: NTS			
3.2 µm US0	Title: SRT3 HYDRAULIC TENSIONER GA Drawing Number: SRTGA030001 Edition: 1 Sheet: 1/1			
Geometric Tol.	© 0.10 // 0.20 ⊕ 0.25			

Rev	Revision Description	Date	Signature	Checked
1	BOLT DATA ADDED	25/9/13	D.CAMPBELL	I.O'BRIEN