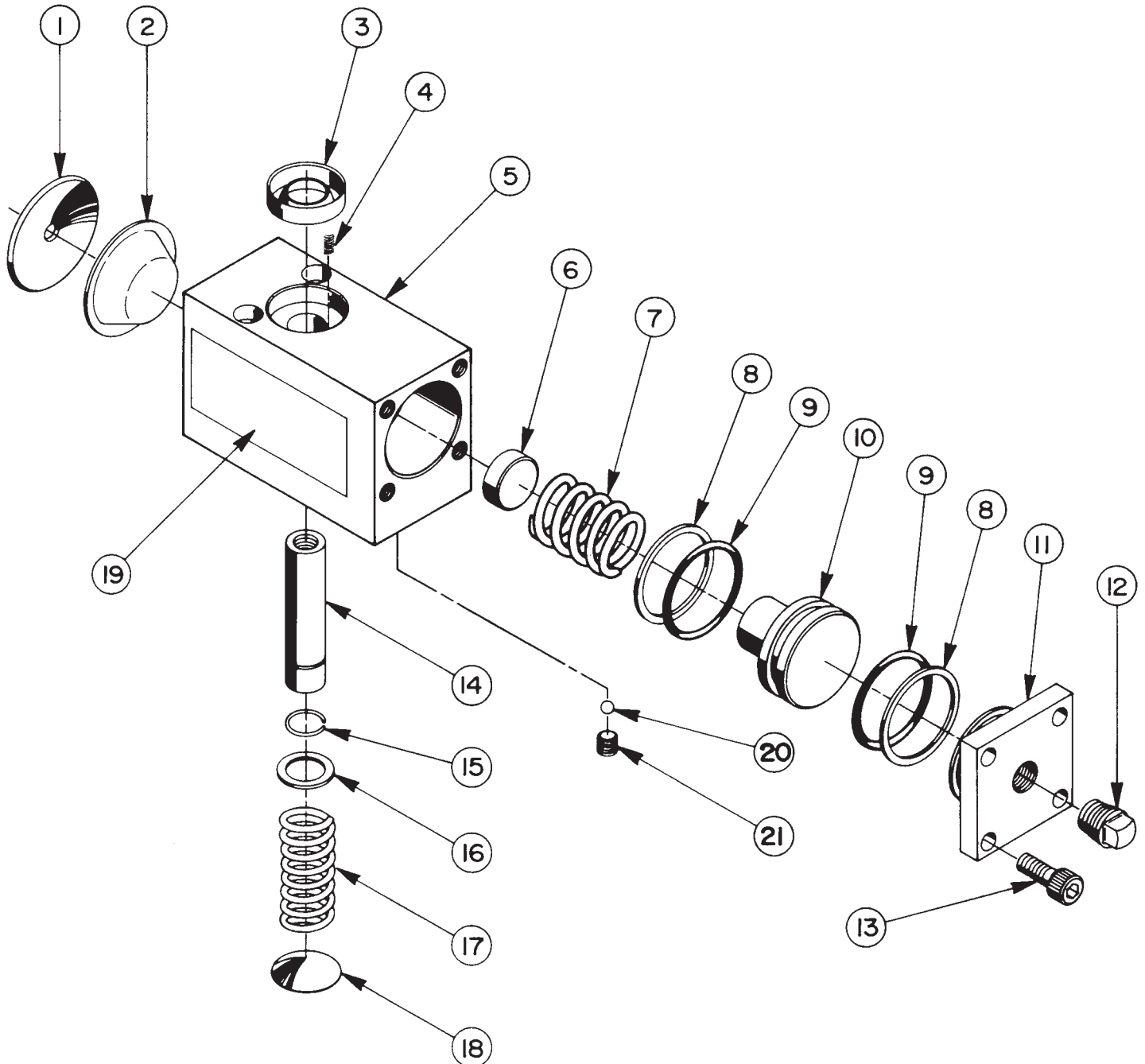


## HYDRAULIC WORK SUPPORT



# Parts List , Form No. 100402, Back sheet 1 of 1

Item No.	Part No.	No. Req'd	Description
1	205661	1	Expansion Plug (1-5/8 Dia.; Seal in place with loctite gasket eliminator 510 or equivalent)
2	39436	1	Rubber Diaphragm
3	*206322	1	Oil Seal
4	206439	1	Compression Spring (1/8" O.D. X 5/16" Lg.)
5	43790	1	Body
6	206318	1	Shim
7	253059	1	Compression Spring (1" O.D. X .67 Lg.)
8	*19177	2	Backup Washer (1-3/8 X 1-3/16 X 1/16)
9	*10914	2	O-ring (1-3/8 X 1-3/16 X 3/32)
10	201878	1	Piston
11	201875	1	End Cap (For 100229)
	351040	1	End Cap (For 110085)
12	10970	1	Pipe Plug (1/4 NPTF)
13	10006	4	Soc. Hd. Cap Screw (1/4-20 X 5/8" Lg.; Torque to 140/160 in. lbs.)
14	39439	1	Dowel Pin
15	11887	1	Retaining Ring
16	205643	1	Wrought Washer
17	205649	1	Compression Spring (23/32 O.D. X 1-1/2 Lg.)
18	*205644	1	Expansion Plug (7/8" Dia.; Seal in place with loctite gasket eliminator 510 or equivalent)
19	205794	1	Trade Name Decal (For 100229)
	253162	1	Trade Name Decal (For 110085)
20	12223	1	Metallic Ball (3/16 Dia.)
21	10136	1	Hex. Soc. Set Screw (1/4-20 X 1/4 Lg.)

Part numbers marked with an asterisk (\*) are contained in Repair Kit No. 300161.

**NOTE: To insure proper diaphragm positioning, assemble the following parts last:**

**12223 (Item 20)**

**10136 (Item 21)**

Refer to any operating instructions included with this product for detailed information about operation, testing, disassembly, reassembly, and preventive maintenance.

Items found in this parts list have been carefully tested and selected. **Therefore: Use only genuine Hytec replacement parts!**

Additional questions can be directed to our Technical Services Department.