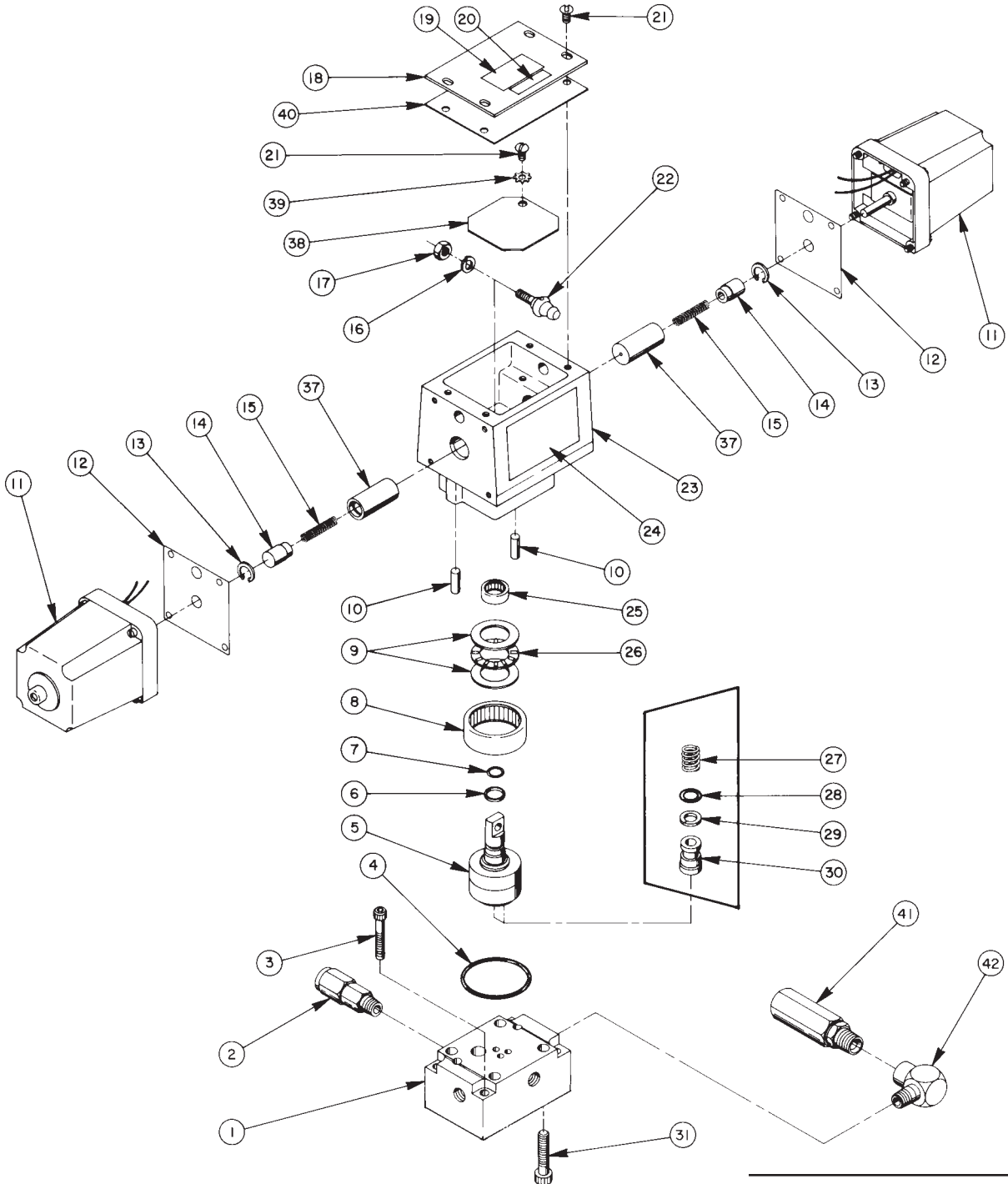


Parts List for:

9573
9574
9612
61159

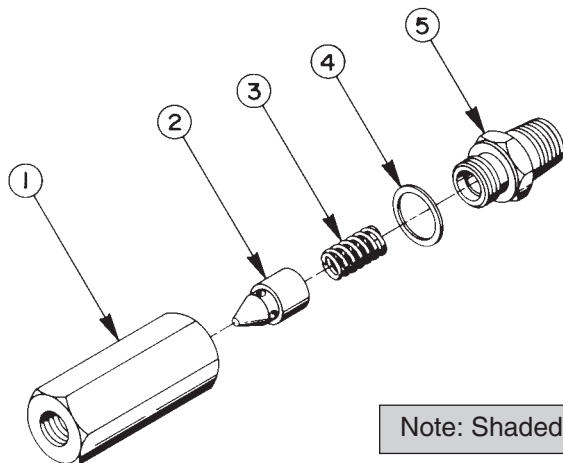
Two Position, 4-Way Remote Mounted - Solenoid Operated
VALVE ASSEMBLY



Parts List, Form No. 100575, Back sheet 1 of 1

Item No.	Part No.	No. Req'd	Description
1	61080	1	Subplate (Prior to 10-1-90)
	64092	1	Subplate (After 10-1-90)
2	206330	1	Check Valve
3	10022	4	Soc. Hd. Machine Screw (1/4-20 UNC X 1-1/2 Lg.)
4	*214699	1	O-ring (2-3/16 X 2" X 3/32, -136)
5	52064	1	Rotor
6	*208672	1	Glyd Ring
7	*10268	1	O-ring (1/2 X 3/8 X 1/16, -012)
8	17505	1	Needle Roller Bearing
9	15935	2	Thrust Washer
10	17567	2	Spring Pin
11	304068	2	Solenoid (115 V., 50/60 Hz; For 9612)
	304069	2	Solenoid (230 V., 50/60 Hz; For 9574)
	304070	2	Solenoid (24 V., 50/60 Hz; For 9573)
12	303980	2	Stop Plate
13	11522	2	Retaining Ring
14	208590	2	Spring Guide
15	13960	2	Compression Spring (1/4 O.D. X 1-1/2 Lg.)
16	10245	1	Lockwasher
17	15504	1	Locknut
18	303976	1	Cover
19	421846	1	Warning Decal
20	209383	1	Patent Decal
21	10164	5	Machine Screw (#10-24 UNC X 3/8 Lg.)
22	304030	1	Lever
23	61077	1	Valve Body
24	209704	1	Part No. Decal (For 9612)
	251268	1	Part No. Decal (For 9573)
	251269	1	Part No. Decal (For 9574)
25	208671	1	Needle Roller Bearing
26	12188	1	Roller Bearing
27	15095	2	Compression Spring (1/4 O.D. X 15/32 Lg.)
28	*10265	2	O-ring (5/16 X 3/16 X 1/16, -008)
29	*15174	2	Backup Washer (5/16 X 3/16 X 3/64, -008)
30	303935	2	Shear Seal
31	10948	4	Soc. Hd. Cap Screw (Torque to 150/200 in. lbs.; Prior to 10-1-90)
	18328	4	Soc. Hd. Cap Screw (5/16-18 X 2" Lg.; Torque to 150/200 in. lbs.; After 10-1-90)
37	303968	2	Actuator Plunger
38	303977	1	Inner Cover
39	11108	1	Lockwasher
40	303986	1	Cover Gasket
41	21570	1	Check Valve Ass'y
42	16797	1	90° Elbow Fitting

Part numbers marked with an (*) asterisk are contained in Repair Kit No. 300332.



CHECK VALVE ASSEMBLY (PART NO. 21570)

Item No.	Part No.	No. Req'd	Description
1	28041	1	Body
2	20771	1	Poppet
3	10426	1	Compression Spring (3/8 O.D. x 3/4 Lg.)
4	10261	1	Copper Washer (3/4 X 19/32 X 1/32)
5	20879	1	Connector

Note: Shaded areas reflect last revision(s) made to this form.