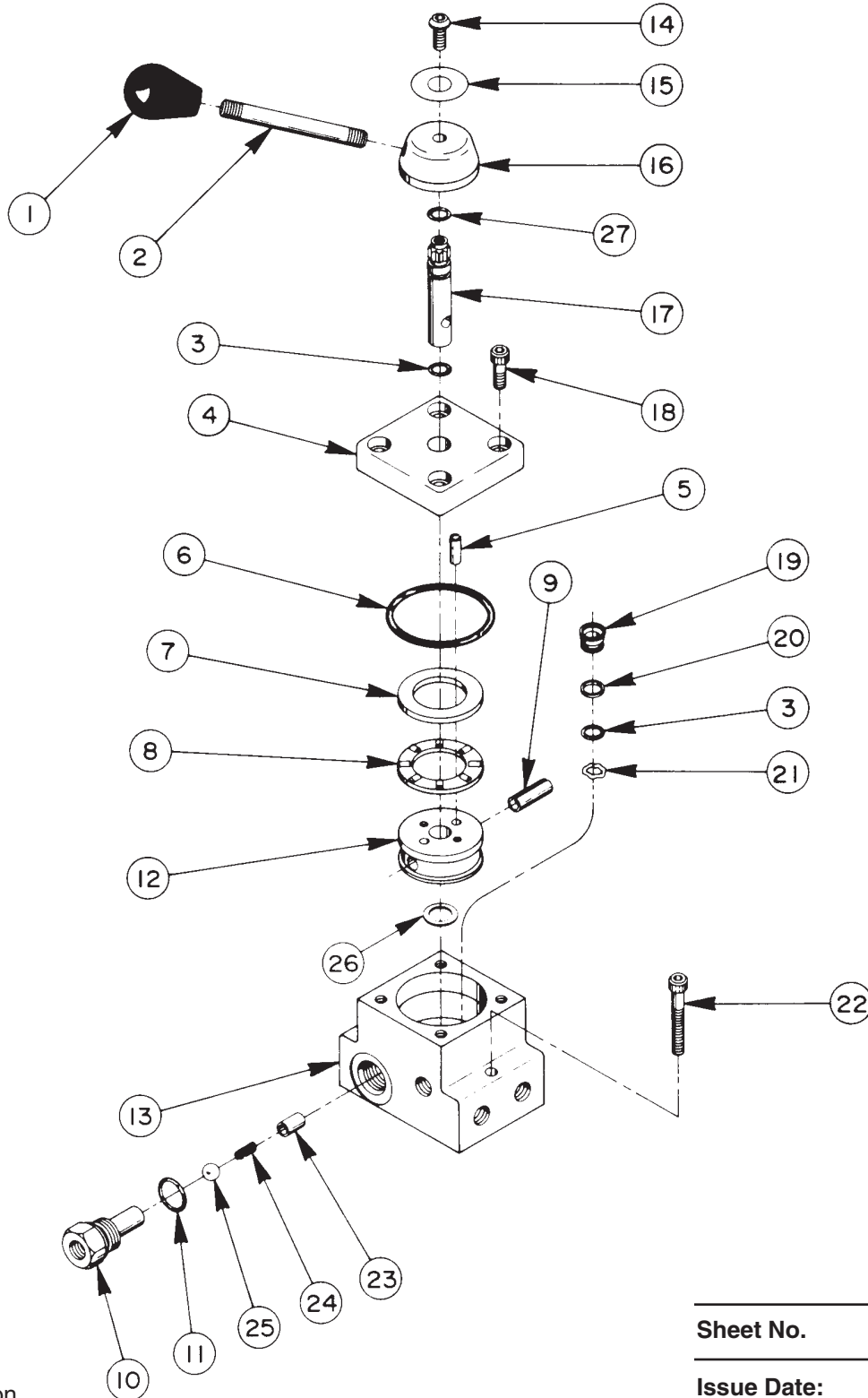


VALVE ASSEMBLY REMOTE MOUNTED



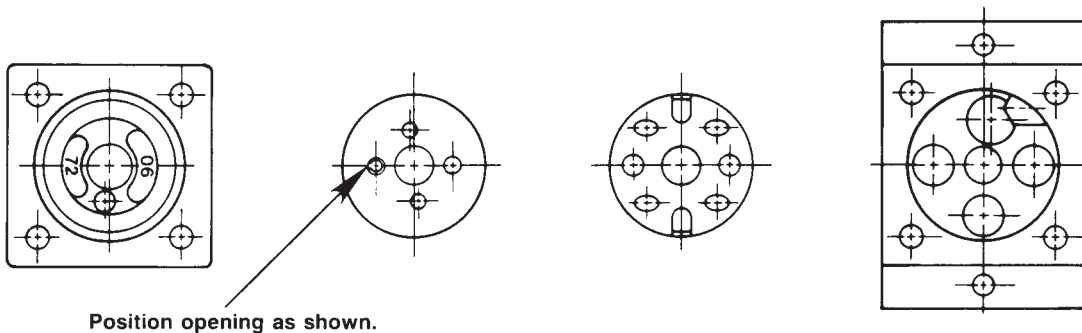
Parts List, Form No. 100626, Back sheet 1 of 2

Item No.	Part No.	No. Req'd	Description	Item No.	Part No.	No. Req'd	Description
1	211911	1	Plastic Knob	12	46060	1	Rotor
2	21639	1	Stud	13	61290	1	Valve Body
3	*10268	4	O-ring (1/2 X 3/8 X 1/16, -012; Nitrile)	14	15911	1	Cap Screw (1/4-20 X 5/8 Lg.; Torque to 60/80 in. lbs.)
	11439	4	O-ring (1/2 X 3/8 X 1/16, -012; Viton)	15	211936	1	Decal
	17716	4	O-ring (1/2 X 3/8 X 1/16, -012; EPR)	16	46057	1	Stem End
4	61343	1	End Cap	17	46048	1	Stem
5	211915	1	Pin	18	11013	4	Cap Screw (5/16-18 X 1" Lg.; Torque to 300/320 in. lbs.)
	250056	1	Pin (After 6-1-91)	19	202480	3	Shear Seal
6	*15892	1	O-ring (1.956 x 1.720 x .118, -924; Nitrile)	20	*11863	3	Backup Washer (1/2 X 3/8 X 1/16, -012)
	19097	1	O-ring (1.956 x 1.720 x .118, -924; Viton)	21	21975	3	Spring (.490 X .345 X .080 thk.)
	212887	1	O-ring (1.956 x 1.720 x .118, -924; EPR)	22	10854	4	Cap Screw (1/4-20 UNC X 1-3/4" Lg.)
7	11227-1	1	Thrust Bearing Washer	23	201813	1	Ball Stop
8	11228	1	Roller Thrust Bearing	24	15141	1	Compression Spring (3/16 O.D. X 5/8 Lg.)
9	10496	1	Roll Pin (5/16 Dia. X 1" Lg.)	25	10377	1	Ball (5/16" Dia.)
10	36414	1	Check Valve Body (Torque to 25/30 ft. lbs.)	26	214801	1	Spacer
11	*10527	1	O-ring (13/16 X .644 X .087, -908; Nitrile)	27	*213674	1	Shaft Seal (After 6-1-91)
	19092	1	O-ring (13/16 X .644 X .087, -908; Viton)				
	17723	1	O-ring (13/16 X .644 X .087, -908; EPR)				

Part numbers marked with an asterisk (*) are contained in Repair Kit No. 300451.

Note: Alternate material seals listed for special valves factory equipped with viton or EPR seals.

SPECIFICATIONS REMOTE MOUNTED MANUAL TWO-POSITION, 4-WAY VALVE WITH PRESSURE PORT CHECKED



FUNCTION

"A" Position:

Pressure to "A" Port

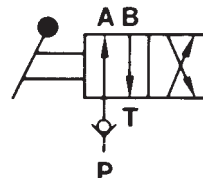
"B" Port to tank

"B" Position:

Pressure to "B" Port

"A" Port to tank

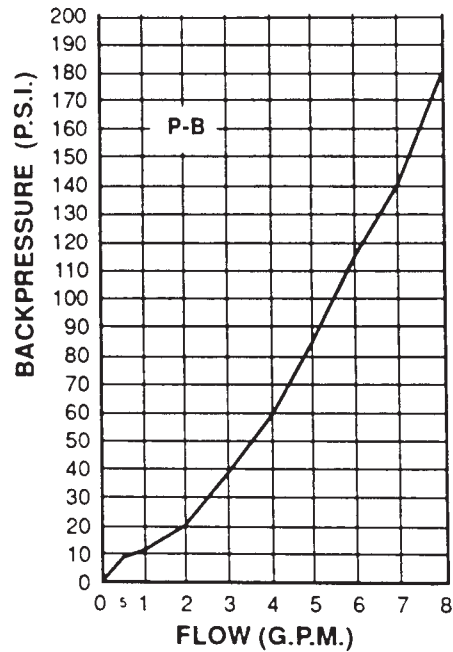
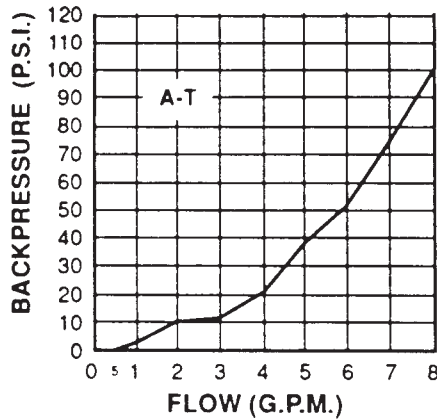
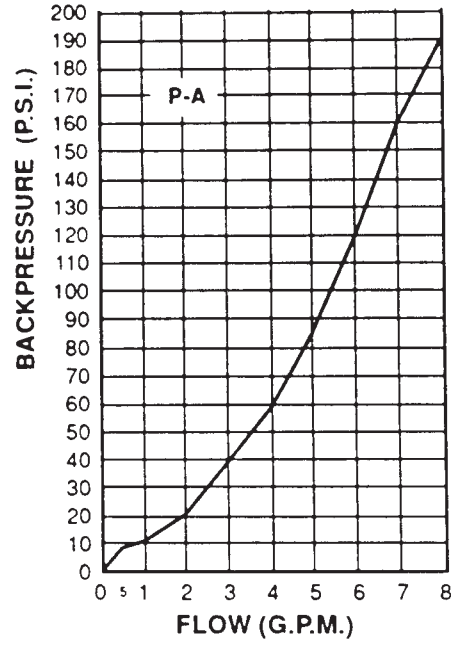
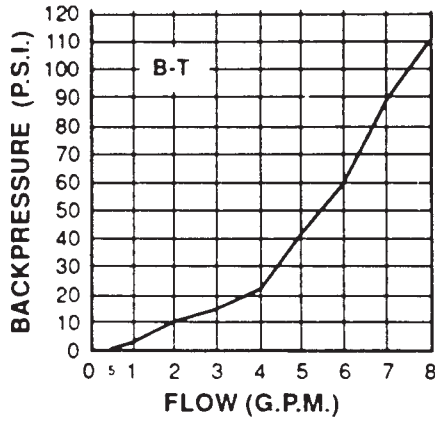
NOTE: The pressure line is checked from reverse flow. All ports open to tank during transition between valve positions.



RATED PRESSURE: 10,000 PSI
CASE PRESSURE: 500 PSI MAX.
RATED FLOW: 5 GPM

Note: Shaded areas reflect last revision(s) made to this form.

PRESSURE DROP AND FLOW CHARTS



Refer to any operating instructions included with this product for detailed information about operation, testing, disassembly, reassembly, and preventive maintenance.

Items found in this parts list have been carefully tested and selected. **Therefore: Use only genuine replacement parts!**

Additional questions can be directed to our Technical Services Department.