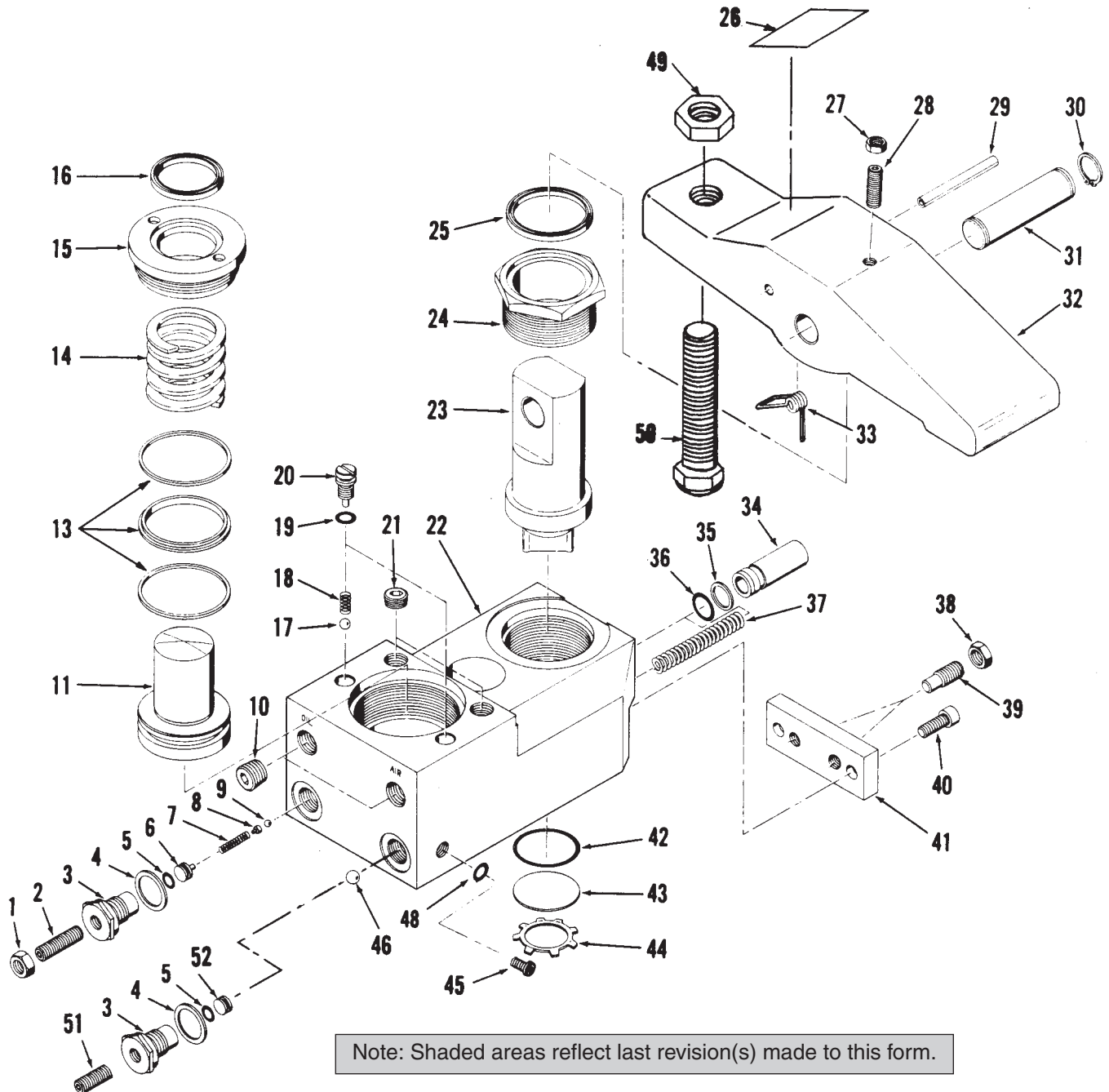


Parts List for:

100109
100110
100111

110101
110103
110105

**MODEL B
SWING CLAMP
AIR/SPRING RETURN, RIGHT HAND**



Note: Shaded areas reflect last revision(s) made to this form.

Parts List, Form No. 100638, Back sheet 1 of 2

		CATALOG NUMBER								
		100109	100110	100111	110101	110103	110105			
Item No.	Part No.						No. Req'd	Description		
1	10200	10200	10200	10200	10200	10200	10200	1	Self-locking Nut (Torque to 70/80 in. lb.)	
2	15503	15503	15503	15503	15503	15503	15503	1	Set Screw (1/4-28 UNF X 1" Lg.)	
3	26570	26570	26570	26570	26570	26570	26570	2	Guide (Torque to 325/350 in. lb.)	
4	†*10261	††*10261	†††*10261	†††*10261	††*10261	†*10261	†*10261	2	Copper Washer (3/4 X 19/32 X 1/32)	
5	*15023	*15023	*15023	*15023	*15023	*15023	*15023	2	Disogrin O-ring (5/16 x 3/16 x 1/16)	
	†206487	††206487	†††206487	†††206487	††206487	†206487	†206487	2	O-ring (5/16 X 3/16 X 1/16)	
6	200539	200539	200539	200539	200539	200539	200539	1	Ball and Spring Guide	
7	*15501	*15501	*15501	*15501	*15501	*15501	*15501	1	Comp. Spring (1/8 I.D. X 1" Lg.)	
8	200548	200548	200548	200548	200548	200548	200548	1	Spring Guide	
9	*12223	*12223	*12223	*12223	*12223	*12223	*12223	1	Steel Ball (3/16 Dia.)	
10	10479	10479	10479					2	Pipe Plug (1/4 NPTF)	
				250883	250883	250883	250883	2	Plug Fitting (1/4 tube)	
11	35360	35364	35423	35423	35364	35360	35360	1	Ram	
13	*14884	*15157	*15153	*15153	*15157	*14884	*14884	1	Tee Seal & Backup Rings (Smooth side of Backup Ring must be against seal)	
	†19235	††19228	†††19224	†††19224	††19228	†19235	†19235	1	Tee Seal & Backup Rings (Smooth side of Backup Ring must be against seal)	
14	*15107	*15108	*15109	*15109	*15108	*15107	*15107	1	Spring	
15	35447					35447	35447	1	Retainer (Torque to 60/70 ft. lb.)	
		35448				35448	35448	1	Retainer (Torque to 50/60 ft. lb.)	
			35452	35452				1	Retainer (Torque to 40/50 ft. lb.)	
16	*15089	*15088	*15092	*15092	*15088	*15089	*15089	1	Rod Wiper Seal	
	†19319	††19318	†††19321	†††19321	††19318	†19319	†19319	1	Rod Wiper	
17	*10374	*10374	*10374	*10374	*10374	*10374	*10374	1	Steel Ball (7/32 Dia.)	
18	*15502	*15502	*15502	*15502	*15502	*15502	*15502	1	Comp. Spring (1/64 O.D. X 5/16 Lg.)	
19	*12522	*12522	*12522	*12522	*12522	*12522	*12522	2	Disogrin O-ring (3/8 X 1/4 X 1/16)	
	†206486	††206486	†††206486	†††206486	††206486	†206486	†206486	2	O-ring (3/8 X 1/4 X 1/16)	
20	200540	200540	200540	200540	200540	200540	200540	2	Retainer	
21	15499	15499	15499	15499	15499	15499	15499	2	Pipe Plug (1/8 NPTF)	
22	60242	60243	60246	421768	421769	421770	421770	1	Body	
23	41876	41877	41896	41896	41877	41876	41876	1	Pivot Shaft	
24	200547					200547	200547	1	Retainer Nut (Torque to 255/295 ft. lb.)	
		200552				200552	200552	1	Retainer Nut (Torque to 150/190 ft. lb.)	
			200596	200596				1	Retainer Nut (Torque to 110/120 ft. lb.)	
25	*15505	*15089	*15091	*15091	*15091	*15091	*15091	1	Rod Wiper Seal	
	†19322	††19319	†††19320	†††19320	††19319	†19322	†19322	1	Rod Wiper	
26	215829	215829	215829	215829	215829	215829	215829	1	Decal	
27	12809	12809	12809	12809	12809	12809	12809	1	Self-locking Nut	
28	15580	10139	10139	10139	10139	10139	10139	1	Set Screw (1/4 -20 UNC X 3/4 Lg.)	
29	11206	12298	11418	11418	12298	11206	11206	1	Roll Pin	
30	11901	15529	15564	15564	15529	11901	11901	2	Retaining Ring	
31	200580	200589	200639	200639	200589	200580	200580	1	Pin	
32	42394	42395	42393	42393	42395	42394	42394	1	Arm	
33	*203022	*203022	*200662	*200662	*203022	*203022	*203022	1	Torsion Spring	
34	35362	35362	35362	35362	35362	35362	35362	2	Piston	
35	†*15500	††*15500	†††*15500	†††*15500	††*15500	†*15500	†*15500	2	Back-Up Washer	

Note: Shaded areas reflect last revision(s) made to this form.

Continued -

Item No.	CATALOG NUMBER						No. Req'd	Description
	100109	100110	100111	110101	110103	110105		
36	*12098	*12098	*12098	*12098	*12098	*12098	2	O-ring (9/16 X 7/16 X 1/16)
	†18975	††18975	†††18975	†††18975	††18975	†18975	2	O-ring (9/16 X 7/16 X 1/16)
37	*15506	*15506	*15506	*15506	*15506	*15506	1	Comp. Spring (19/64 O.D. X 3" Lg.)
38	10384	10384	10384	10384	10384	10384	2	Self-locking Nut
39	200595	200595	200595	200595	200595	200595	2	Adjustable Stop (Apply loctite #242 or equivalent.)
40	10006	10006	10006	10006	10006	10006	2	Cap Screw (1/4-20 UNC X 5/8 Lg.; Torque to 140/160 in. lb.)
41	35404	35404	35404	35404	35404	35404	1	End Cap
42	*15175	*15175	*15175	*15175	*15175	*15175	1	O-ring (1-1/4 X 1-1/8 X 1/16)
	†18981	††18981	†††18981	†††18981	††18981	†18981	1	O-ring (1-1/4 X 1-1/8 X 1/16)
43	15526	15526	15526	15526	15526	15526	1	Washer Plug
44	†12198	††12198	†††12198	†††12198	††12198	†12198	1	Internal Retaining Ring
45	15951	15951	15951	15951	15951	15951	2	Button Head Screw (10-24 UNC X 1/4 Lg.; Torque to 35/45 in. lb.)
46	*10377	*10377	*10377	*10377	*10377	*10377	1	Steel Ball (5/16 Dia.)
48	*14319	*14319	*14319	*14319	*14319	*14319	2	Washer (5/16 X 3/16 X 1/32)
49	10399	10395	10391	10391	10395	10399	1	Jam Nut
50	202221	202223	202209	202209	202223	202221	1	Contact Pin
51	16591	16591	16591	16591	16591	16591	1	Socket Set Screw (1/4-28 UNF X 1/2 Lg.; Torque to 70/80 in. lb.)
52	202425	202425	202425	202425	202425	202425	1	Ball Retainer

PARTS INCLUDED BUT NOT SHOWN

†205724	††205724	†††205724	†††205724	††205724	†205724	1	Decal (Viton)
---------	----------	-----------	-----------	----------	---------	---	---------------

Part numbers marked with an asterisk (*) are in a Standard Repair Kit as follows:

Repair Kit No. 200651 for 100109 & 110105.

Repair Kit No. 200652 for 100110 & 110103.

Repair Kit No. 200653 for 100111 & 110101.

Part numbers marked with one dagger (†) are contained in Viton Seal Kit No. 300242 for 100109 & 110105.

Part numbers marked with a double dagger (††) are contained in Viton Seal Kit No. 300243 for 100110 & 110103.

Part numbers marked with a triple dagger (†††) are contained in Viton Seal Kit No. 300244 for 100111 & 110101.

Note: Shaded areas reflect last revision(s) made to this form.

Refer to any operating instructions included with this product for detailed information about operation, testing, disassembly, reassembly, and preventive maintenance.

Items found in this parts list have been carefully tested and selected. **Therefore: Use only genuine Hytec replacement parts!**

Additional questions can be directed to our Technical Services Department.