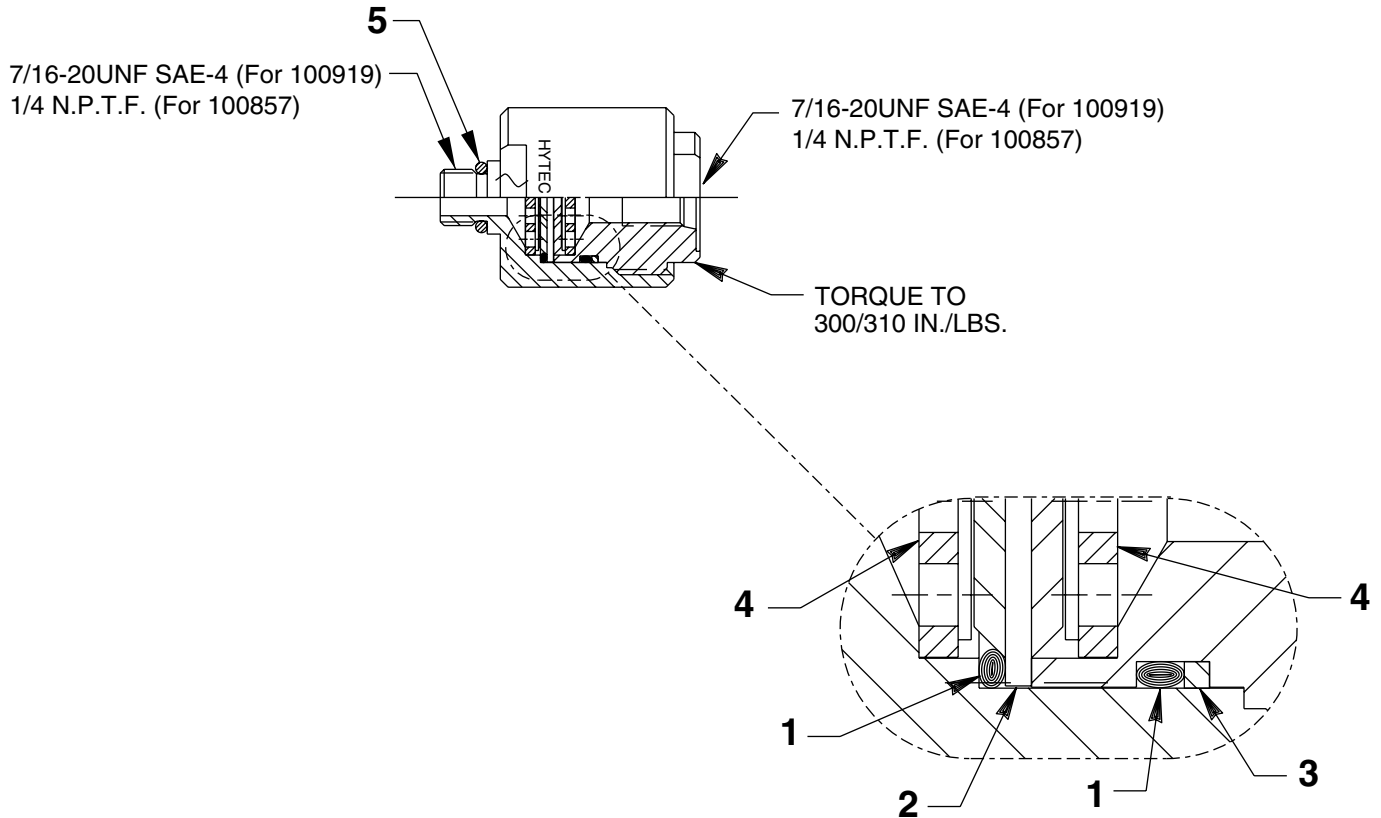


IN-LINE FILTER ASSEMBLY

Max. Capacity: 5,000 PSI



Item No.	Part No.	No. Req'd	Description
1	*10304	2	O-ring (1" X 7/8 X 1/16)
2	*250935	1	Pleated Filter Element
3	*250990	1	Backup Washer (1" x 7/8 x .048)
4	250937	2	Support Disc
5	*11496	1	O-ring (1/2 X 11/32 X 5/64; For 100919 only)

Part numbers marked with an asterisk (*) are contained in Repair Kit No. 300624.

Note: Shaded areas reflect last revision(s) made to this form.

SAFETY PRECAUTIONS



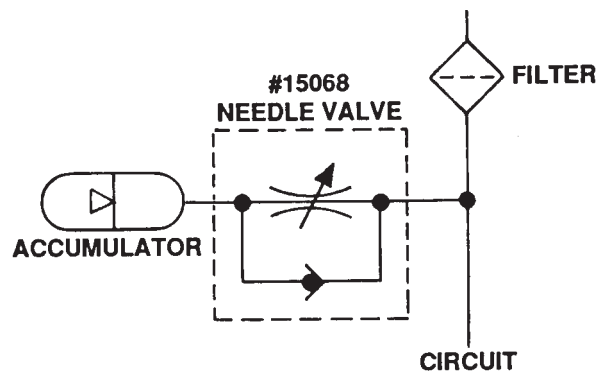
WARNING: To help avoid personal injury,

- Do not exceed the 5,000 PSI hydraulic pressure rating of this component. Creating pressure beyond the rated capacity can result in personal injury.

INSTALLATION

This filter assembly is bi-directional and can be installed in uni-directional or bi-directional circuits. Filter orientation is not critical.

Severe pressure/flow surges can cause the element to fatigue and release contaminants downstream. Surges, caused by releasing accumulators, can be reduced by installing a "meter-out" needle valve (Hytec #15068) in the accumulator's outlet to slow its release of oil.



RECOMMENDED VALVE FOR CIRCUITS CONTAINING ACCUMULATORS

SERVICE INTERVAL

This filter is designed to remove contaminants so small that they are not visible to the human eye. Filter element should be replaced every 50,000 pressure cycles regardless of visual filter condition.

More frequent replacement may be necessary depending on the overall cleanliness of your system. If the filter is opened for inspection purposes only, see step #2 of "Replacement of Filter Element" below. Remember, contaminants too small to be seen can be collecting in the filter and degrade system performance. The filter should be replaced before system performance changes are evident.

REPLACEMENT OF FILTER ELEMENT

1. To disassemble, hold the filter body and remove the threaded plug in the female port side of the filter.
2. If contaminants are visible, discard the filter element but retain the support discs. If the filter is being disassembled for inspection only, and is to be reassembled with the same filter element, the filter *must* be installed facing the same direction that it was originally. **IMPORTANT: Attempting to clean the filter element and/or reversing it during reassembly will release contaminants into the hydraulic system that can cause component damage or failure.**
3. Clean each individual component carefully with a filtered solvent or clean water. **IMPORTANT: Do not attempt to clean the filter element! Always replace it with a new filter.**
4. Reassemble filter unit with new o-rings, backup washer, and filter element. Support discs must be installed with the screen side facing the filter element. Orientation of the new filter element is not critical. Torque the threaded plug into the filter body at 300 in. lbs.