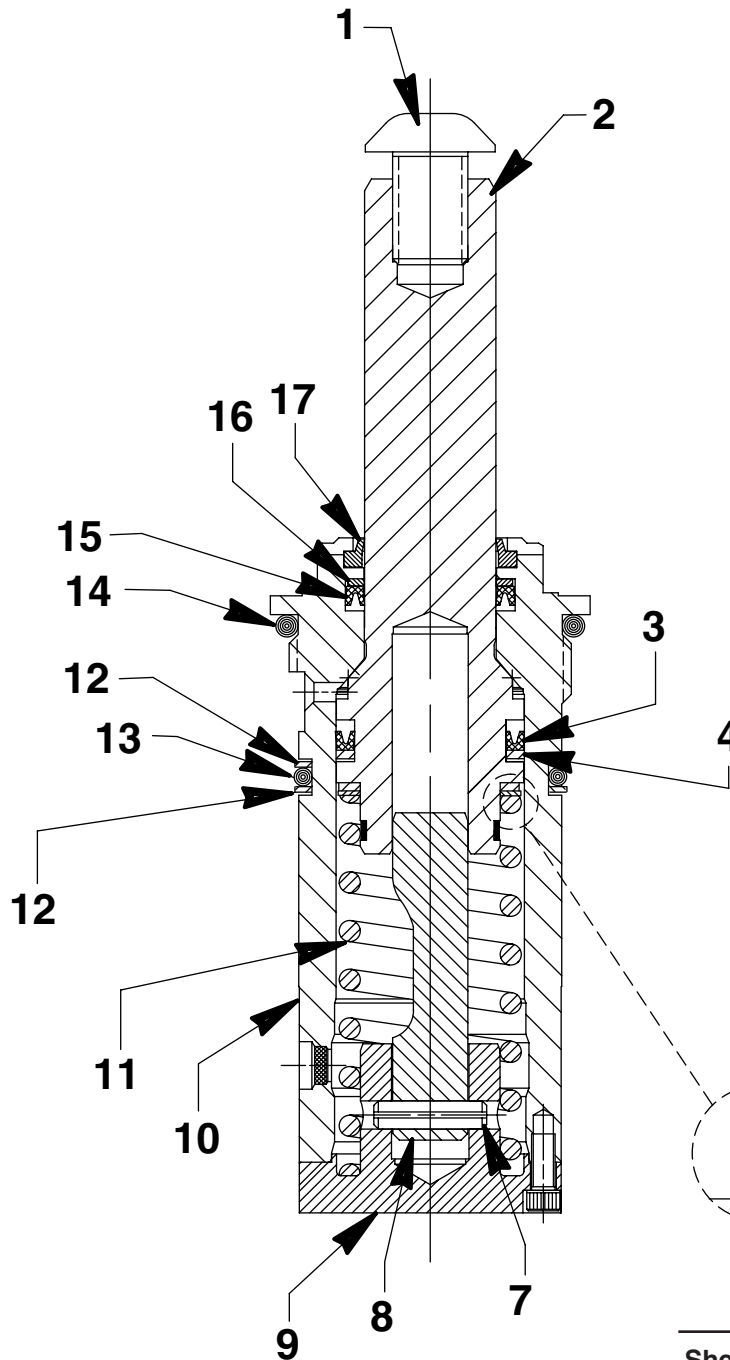


MODEL C
CARTRIDGE STYLE MOUNT
SINGLE-ACTING SWING CLAMP
Capacity: 2300 lbs. Clamping Force (with 2" lg. arm) at 5,000 PSI Max.
100859 - Left Hand, 1/2" Stroke; 100860 - Right Hand, 1/2" Stroke
100868 - Straight Pull, 1/2" Stroke

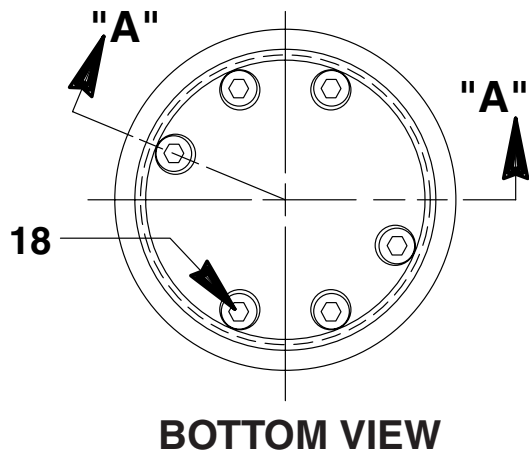


IMPORTANT!
Carefully compare teflon washers (Items 4 and 5). Item 4 is the *larger* of the two washers (both inside and outside diameters). **DO NOT REVERSE!**

Refer to any operating instructions included with this product for detailed information about operation, testing, disassembly, reassembly, and preventive maintenance.

Items found in this parts list have been carefully tested and selected. **Therefore: Use only genuine Hytec replacement parts!**

Additional questions can be directed to our Technical Services Department.



Item No.	Part No.	No. Req'd	Description
1	251648	1	Cap Screw (1/2-13 UNC x 3/4 Lg.; Torque to 40/60 ft. lbs.)
2	351042	1	Piston Assembly
3	*250620	1	V-block Packing
4	*250621	1	Backup Washer (1-1/4 x 1.014 x .048)
5	*210364	1	Backup Washer (1.175 X .937 X .048)
6	*251100	1	Special Washer (Note: Assemble with larger radii towards Backup Washer [Item #5]. Must be grease and oil free.)
7	10782	1	Pin (Assemble with slot towards bottom of clamp.)
8	350397	1	Rotating Cam (Right Hand† 90° for 100860)
	350398	1	Rotating Cam (Left Hand† 90° for 100859)
	350343	1	Rotating Cam (Straight Pull for 100868)
9	420922	1	End Cap
10	351224	1	Swing Clamp Body
11	250619	1	Compression Spring (1-1/4 O.D. x 3-1/2 Lg.)
12	*19134	2	Backup Washer (1-3/4 x 1-9/16 c .048)
13	*250909	1	O-ring (1-3/4 x 1-9/16 x 3/32)
14	*15892	1	O-ring (1.956 X 1.720 X .118)
15	*250480	1	V-cup
16	*250479	1	Backup Washer (1.113 x 7/8 x .048)
17	*250478	1	Rod Wiper
18	15139	6	Soc. Hd. Cap Screw (6-32 UNC x 1/2" Lg.; Torque to 30/40 in. lbs.)

} Grease roller in piston rod (Item #2) and cam with a light coating of CDM Extreme Pressure Lube #3.

Part numbers marked with an asterisk (*) are contained in Repair Kit No. 300611.

† Right hand rotation is clockwise rotation when viewed from the piston rod end.
Left hand is counterclockwise rotation. To reverse clamp rotation, order the appropriate rotating cam.