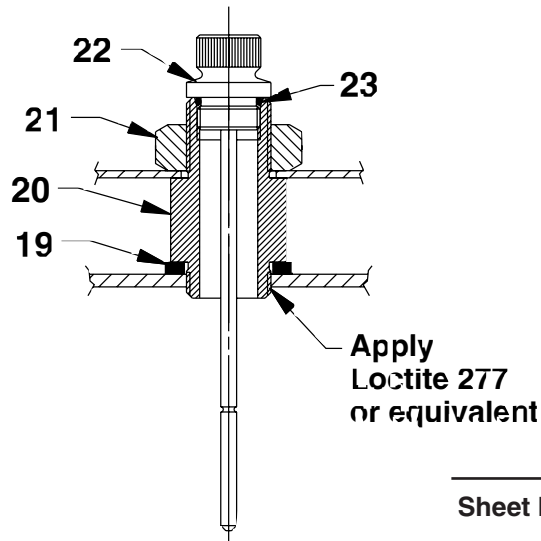
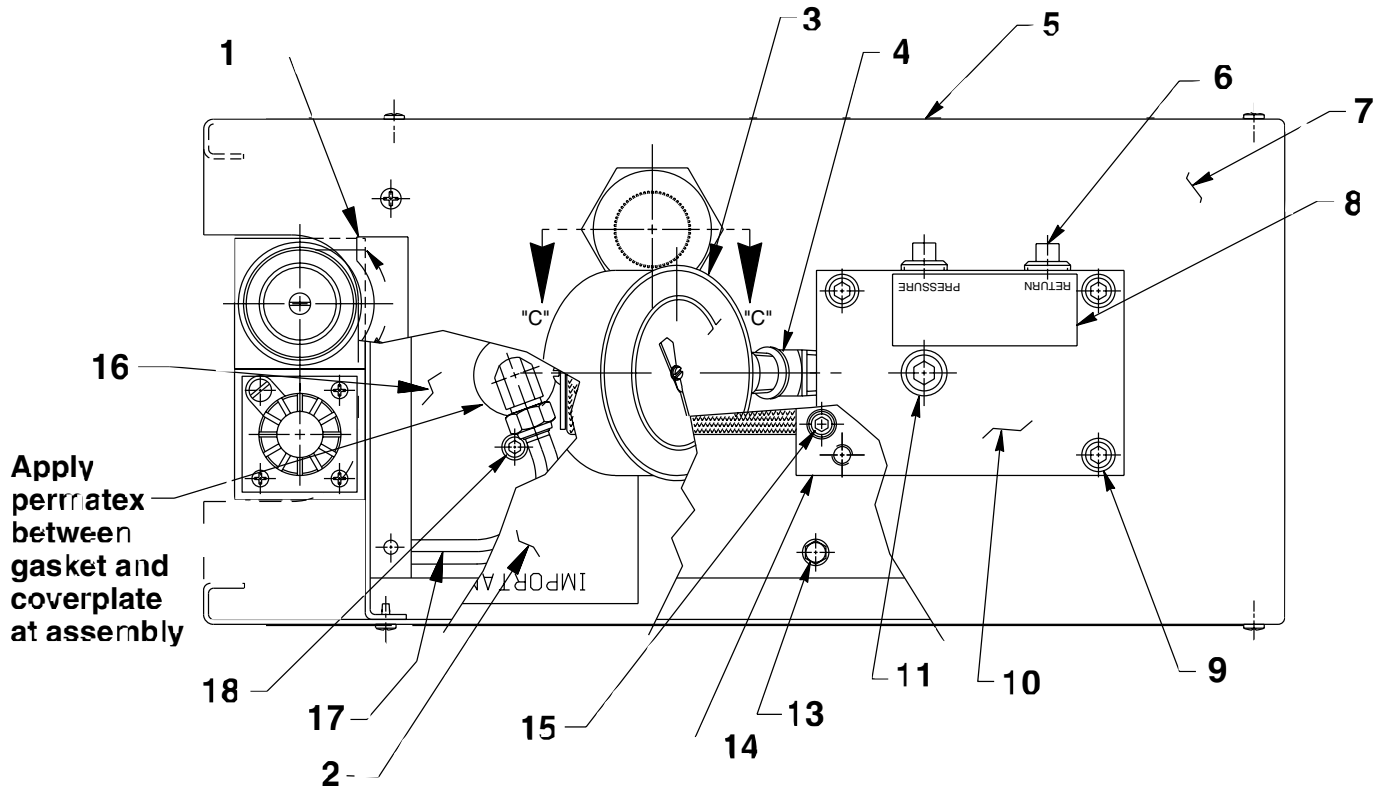


MODEL G
AIR HYDRAULIC PUMP
Rated Capacity: 4,475 PSI at 125 PSI Air Max.



Parts List, Form No. 101895, Back sheet 1 of 3

Item No.	Part No.	No. Req'd	Description
1	202076	1	Decal
2	350492	1	Decal
3	17946	1	Pressure Gauge
4	10645	1	45° Street Elbow
5	309386	2	Decal
6	10970	2	Pipe Plug
7	58760WH2	1	Top Cover
8	210995	1	Manifold Decal
9	10020	4	Cap Screw (1/4-20 UNC x 1-1/4" Lg.)
10	45837	1	Manifold
11	10479	1	Pipe Plug
13	211060	6	Screw (#9-15 x 1" Lg.; Torque to 25/30 in. lbs.)
14	58714	1	Manifold
15	11151	4	Cap Screw (10-24 UNC x 1-1/4" Lg.; Torque to 50/60 in. lbs.)
16	58761WH2	1	Cover Plate
17	14726	.33 ft.	Tubing
18	11434	2	Cap Screw (10-24 UNC x 1/2 Lg.; Torque to 50/60 in. lbs.)
19	252041	1	Sealing Washer
20	351190	1	Filler Plug Adapter
21	252042	1	Hex Jam Nut
22	252070	1	Dipstick Assembly
23	*10273	1	O-ring (13/16 x 5/8 x 3/32)

PARTS INCLUDED BUT NOT SHOWN

211060	4	Screw (#9-15 x 1" Lg.; Torque to 25/30 in. lbs.; Note: for pump mounting purposes only.)
--------	---	--

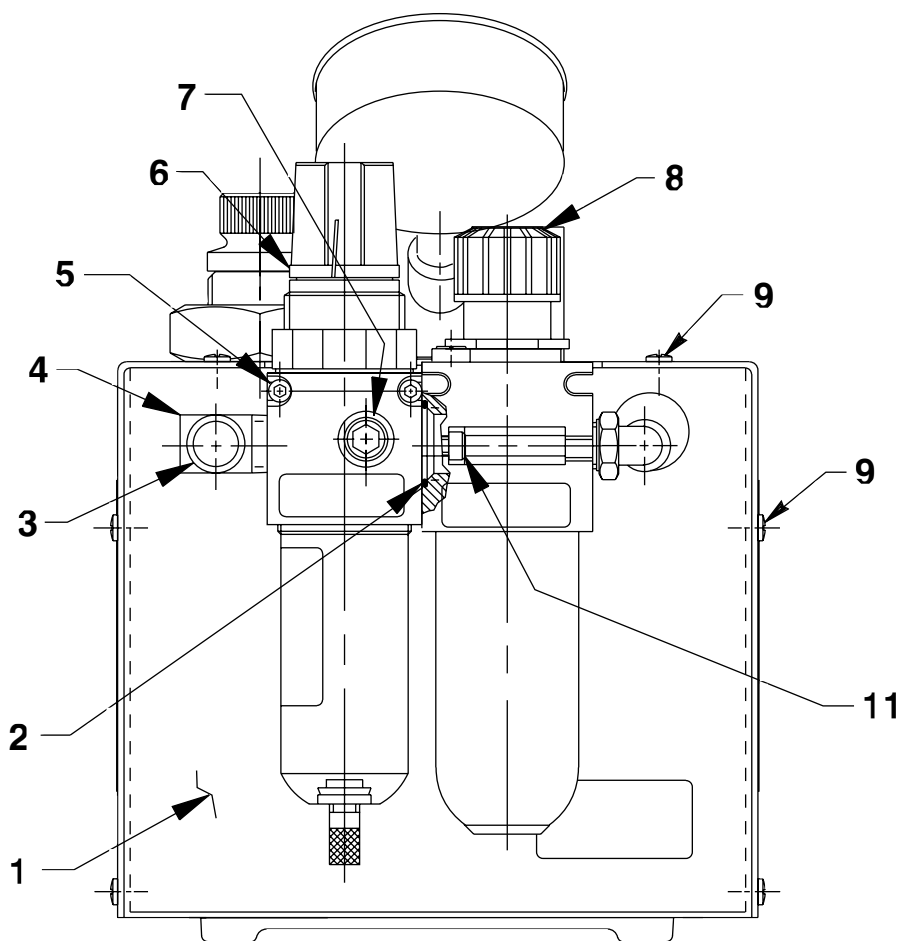
Part numbers marked with an asterisk (*) are contained in Repair Kit No. 300968.

Refer to any operating instructions included with this product for detailed information about operation, testing, disassembly, reassembly, and preventive maintenance.

Items found in this parts list have been carefully tested and selected. **Therefore: Use only genuine Hytec replacement parts!**

Additional questions can be directed to our Technical Services Department.

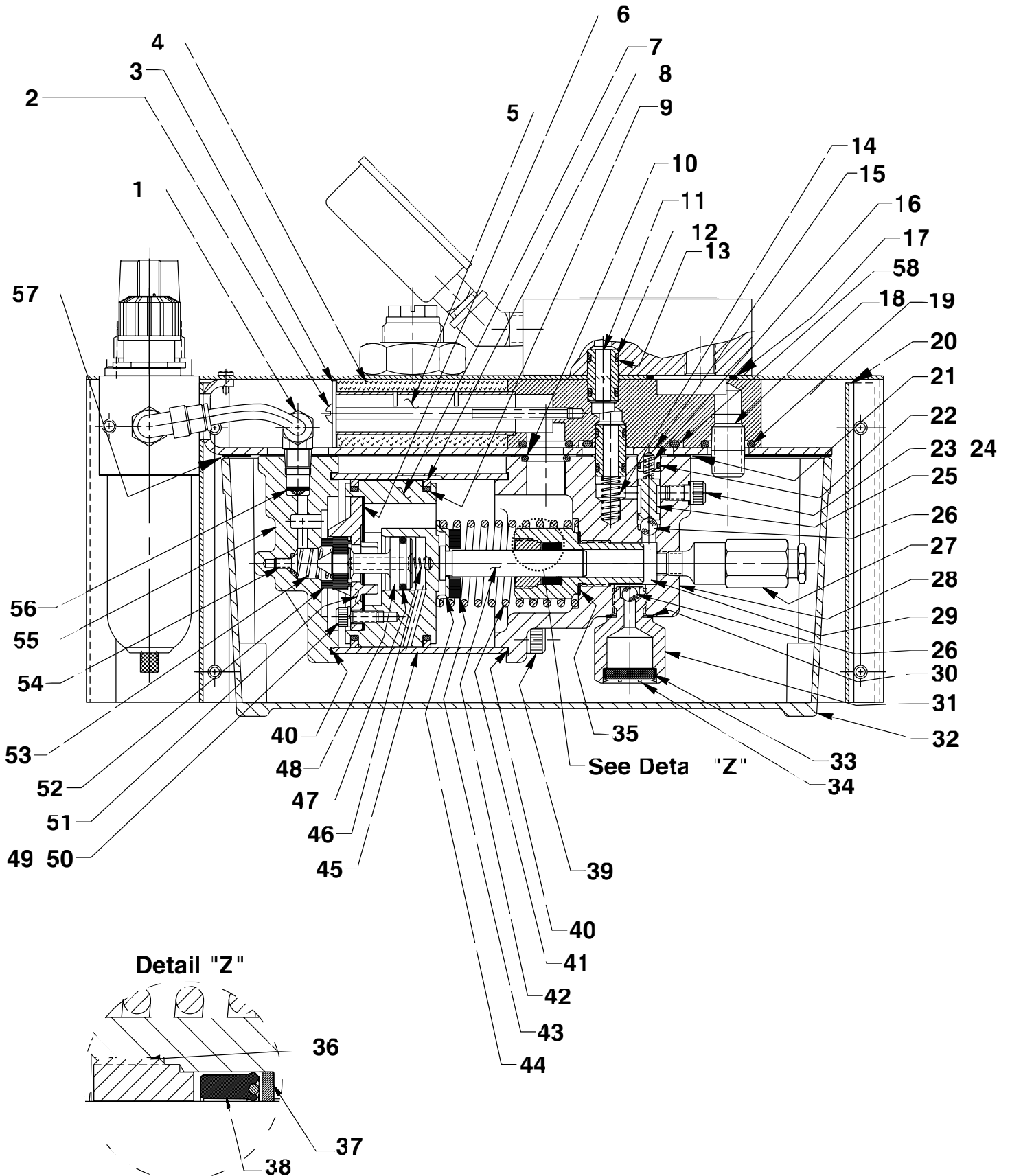
END VIEW



Item No.	Part No.	No. Req'd	Description
1	421229PU2	1	Front Panel
2	*10273	1	O-ring (13/16 x 5/8 x 3/32)
3	14794	1	Plastic Cap
4	15373	1	Elbow
5	252064	2	Soc. Hd. Cap Screw
6	252032	1	Filter Regulator Assembly (For replacement bowl order no. 251812; For replacement filter order no. 251811)
7	15499	2	Pipe Plug
8	252030	1	Air Lubricator (For replacement bowl order no. 251813)
9	14126	10	Screw (10-24 x 3/8 Lg.)
11	10826	2	Cap Screw (#8-32 UNC x 1/2Lg.)

Part numbers marked with an asterisk (*) are contained in Repair Kit No. 300968.

BASIC PUMP ASSEMBLY



Item No.	Part No.	No. Req'd	Description	Item No.	Part No.	No. Req'd	Description
1	15457	2	Elbow	32	61243	1	Reservoir
2	16453	1	Screw (#10-24 UNC x 4" Lg.; Apply Loctite)	33	214578	1	Filter
3	16450	1	Steel Washer (For 1/4 Bolt)	34	214586	1	Internal Retaining Ring
4	*29992	1	Foam Tube	35	*10263	1	Copper Washer (1" x .765 x 1/32)
5	28387	1	Muffler	36	*351662	1	Retainer (Note: See "INSTRUCTIONS FOR RETAINER REPLACEMENT" on back sheet 3 of 3)
6	*28239	1	Gasket	37	*12488	1	Backup Washer
7	52390	1	Piston Body	38	*253095	1	U-cup Packing
8	*14265	2	Piston Ring	39	17428	4	Soc. Hd. Cap Screw (1/4-20 UNC x 3-1/2" Lg.; Torque to 85/95 in. lbs. oiled; Note: Cross torque in increments of 30 in. lbs.)
9	*251835	2	O-ring (2-1/2" x 2-5/16" x 3/32)	40	*17429	2	Backup Ring (2-15/16" x 2-3/4" x .045)
10	*10272	1	O-ring (3/4 x 9/16 x 3/32)	41	*13938	1	Spring (1.452 OD x 4-7/16" Lg.)
11	21094	2	Bushing	42	28400	1	Piston
12	*10268	4	O-ring (1/2 x 3/8 x 1/16)	43	202613	1	Bumper
13	*11863	4	Backup Washer (1/2 x 3/8 x 1/16)	44	211082	1	Spring Guide
14	*16448	1	Compression Spring (5/16 OD x 13/16 Lg.)	45	37434	1	Air cylinder (Note: Locate groove on upper half (Top) of pump with chamfered tube end towards rear head as shown.)
15	36497	1	Check Valve Retainer	46	*12692	1	Compression Spring (3/16 OD x 1-11/16" Lg.)
16	*10445	1	Compression Spring (5/32 OD x 3/4 Lg.)	47	*211052	1	O-ring (.900 x .706 x .097)
17	*16684	1	O-ring (1-3/16" x 1" x 3/32)	48	305475	1	Exhaust Valve Stem
18	15024	1	Close Nipple	49	10241	3	Lockwasher (For #10 bolt)
19	*10276	2	O-ring (1" x 3/4 x 1/8)	50	211054	3	Screw (#10-24 x 1/2 Lg.; Torque to 50/55 in. lbs.)
20	42357PU2	1	Front Panel	51	33822	1	Piston End Plate
21	*351021	1	Gasket	52	*28183	1	Piston Poppet
22	*12522	1	O-ring (3/8 x 1/4 x 1/16)	53	*205679	1	Compression Spring
23	*10442	2	Washer (3/8 x 1/4 x 1/32)	54	205674	1	Screw (8-32 UNC x 3/8 Lg.; torque to 12/18 in. lbs.)
24	10002	1	Cap Screw (1/4-20 UNC x 3/8 Lg.; Torque to 90/110 in. lbs.)	55	37468	1	Rear Head
25	202568	1	Ball Guide	56	*216296	1	Filter Disc
26	*10423	2	Steel Ball (9/32 Dia.)	57	*33853	1	Reservoir Gasket
27	21278-48	1	Relief Valve (Set at 4,900/5,300 PSI. Apply Loctite 592 [Power Team #905516] or equiv. & torque to 150/170 in. lbs.)	58	*11841	1	O-ring (1.62 x 1.37 Nitrile)
28	64767	1	Pump Body				
29	421642	1	Cylinder (Torque to 90/100 ft. lbs. oiled)				
30	*10261	1	Copper Washer (3/4 x 19/32 x 1/32)				
31	48010	1	Filter Adapter (Torque to 40/50 ft. lbs. oiled)				

Part numbers marked with an asterisk (*) are contained in Repair Kit No. 300968.

Note: Shaded areas reflect last revision(s) made to this form.

INSTRUCTIONS FOR RETAINER REPLACEMENT

Your pump's retainer is locked into place by one of the two following methods. Determine which method was used on your pump's retainer, then follow the appropriate steps to remove the old and install and stake the new.

Method 1 - Retainer shows no sign of stake marks

1. This retainer has been locked in place with a Loctite product. To replace it, a moderate amount of heat needs to be applied to the cylinder nut (in the area of the retainer) to soften the existing Loctite allowing it to be removed.
2. Install the new retainer into the cylinder nut and torque to 80/100 in. lbs. **Note: Do not use a Loctite product this time but stake the new retainer in place according to instructions in Step 3.**
3. To lock retainer into place, use a center punch positioned in the seam between the retainer and the cylinder nut and stake the new retainer in two places approximately 180° apart.

Method 2 - Retainer has two stake marks in the seam between the retainer and the cylinder nut

1. For replacement of this retainer, the stake marks must be removed. Using a 1/8" or larger diameter drill bit, remove the existing stakes by drilling a short distance into the stake marks. Remove the retainer.
2. Install the new retainer into the cylinder nut and torque to 80/100 in. lbs.
3. To lock retainer into place, use a center punch positioned in the seam between the retainer and the cylinder nut and stake the new retainer in two places approximately 180° apart.

NOTE: Do not stake in the old stake marks.

