

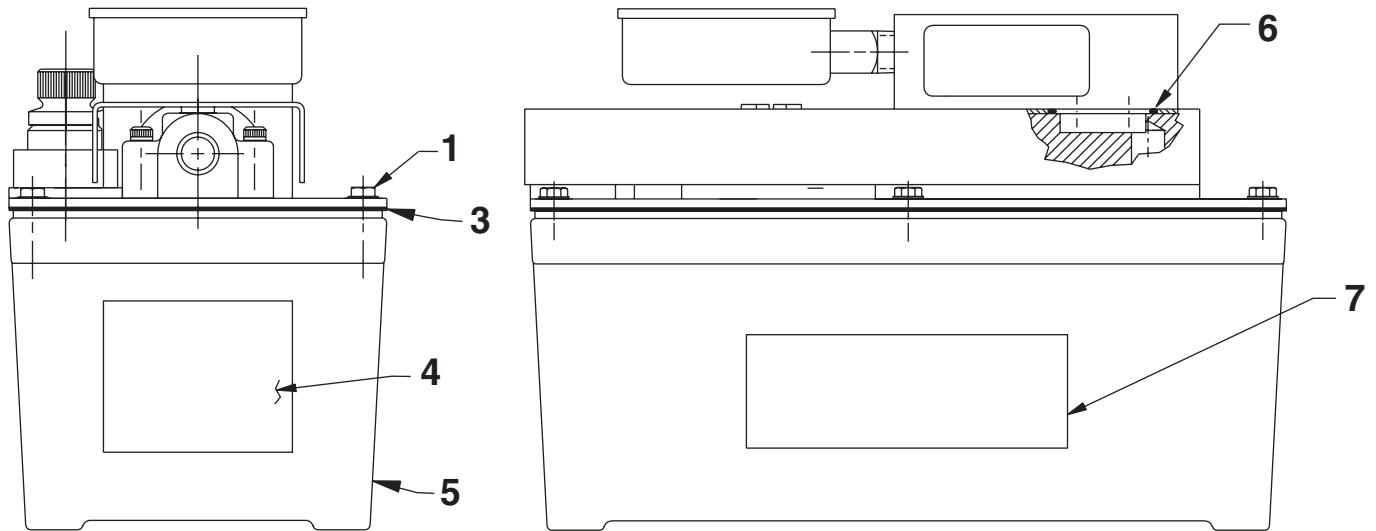


SPX Corporation
5885 11th Street
Rockford, IL 61109-3699 USA

Tech. Services: (800) 477-8326
Fax: (800) 765-8326
Order Entry: (800) 541-1418
Fax: (800) 288-7031

Internet Address:
<http://www.hytec.com>

MODEL G
AIR HYDRAULIC PUMP
Rated Capacity: 4,475 PSI at 125 Air Max.
GENERAL SECTION



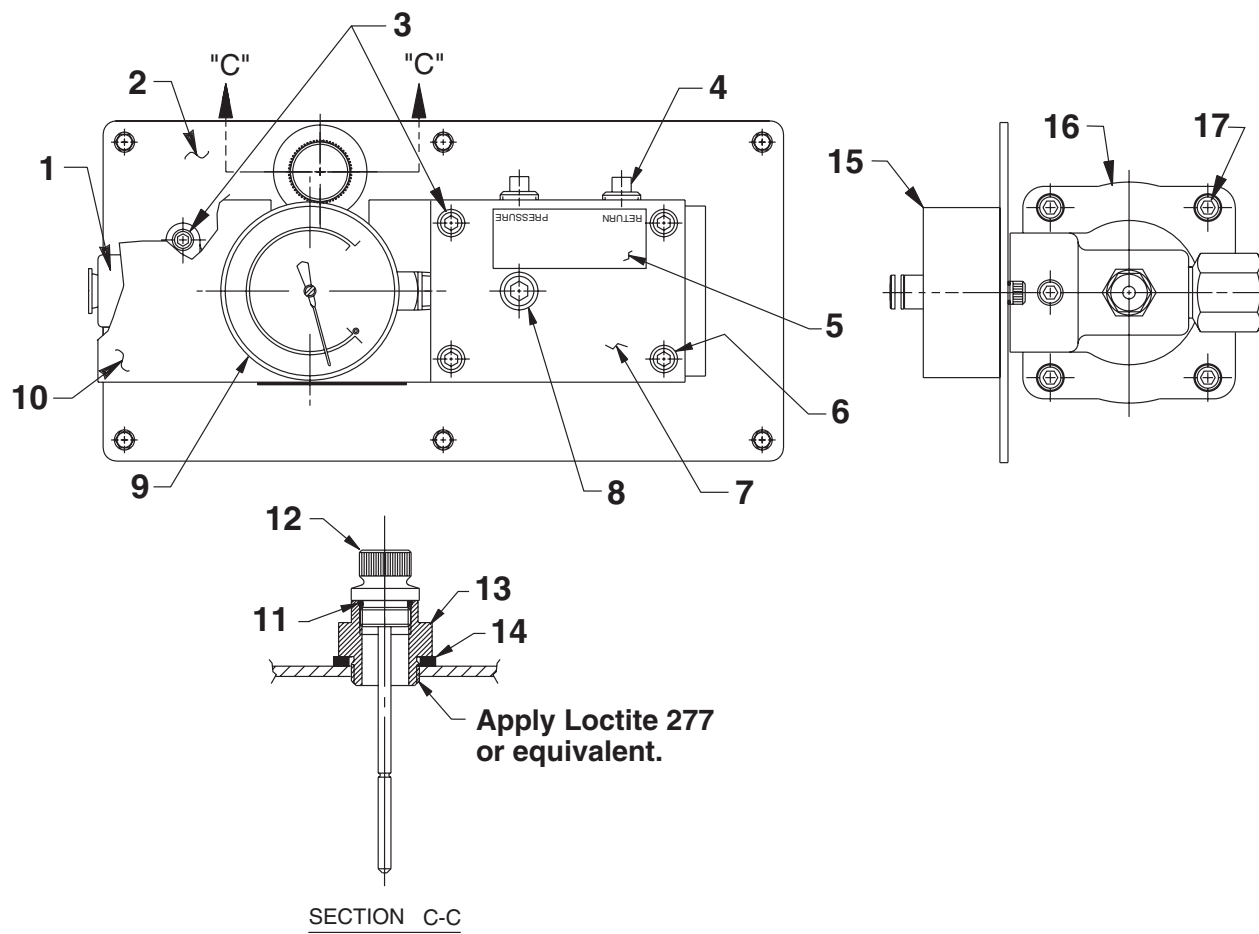
Item No.	Part No.	No. Req'd	Description
1	211060	6	Screw (#9-15 X 1" Lg.; Torque to 25/35 in. lbs.)
3	*33853	1	Reservoir Gasket
4	305494	1	Decal
5	61243	1	Reservoir
6	*16684	1	O-ring (1-3/16" X 1" X 3/32)
7	211533	2	Tradename Decal

PARTS INCLUDED BUT NOT SHOWN

211060	4	Screw (#9-15 X 1" Lg.; Torque to 25/35 in. lbs.; For pump mounting purposes only.)
--------	---	--

Part numbers marked with an asterisk (*) are contained in Repair Kit No. 300968.

TOP & END VIEWS



Item No.	Part No.	No. Req'd	Description
1	309246	1	Intake
2	421240BK2	1	Cover Plate
3	11151	6	Cap Screw (10-24 UNC X 1-1/4" Lg.; Torque to 50/60 in. lbs.)
4	10970	2	Pipe Plug (1/4 NPTF)
5	210995	1	Decal
6	10020	4	Cap Screw (1/4-20 UNC X 1-1/4" Lg.)
7	45837	1	Manifold
8	10479	1	Pipe Plug (1/4 NPTF)
9	17946	1	Pressure Gauge

Item No.	Part No.	No. Req'd	Description
10	351219BK2	1	Shroud
11	*10273	1	O-ring (13/16 X 5/8 X 3/32)
12	252076	1	Dipstick Assembly
13	351214	1	Filler Plug Adapter
14	252041	1	Sealing Washer
15	58714	1	Manifold
16	64767	1	Pump Body
17	17428	4	Soc. Hd. Cap Screw (1/4-20 UNC X 3-1/2" Lg.; Torque to 85/95 in. lbs.)

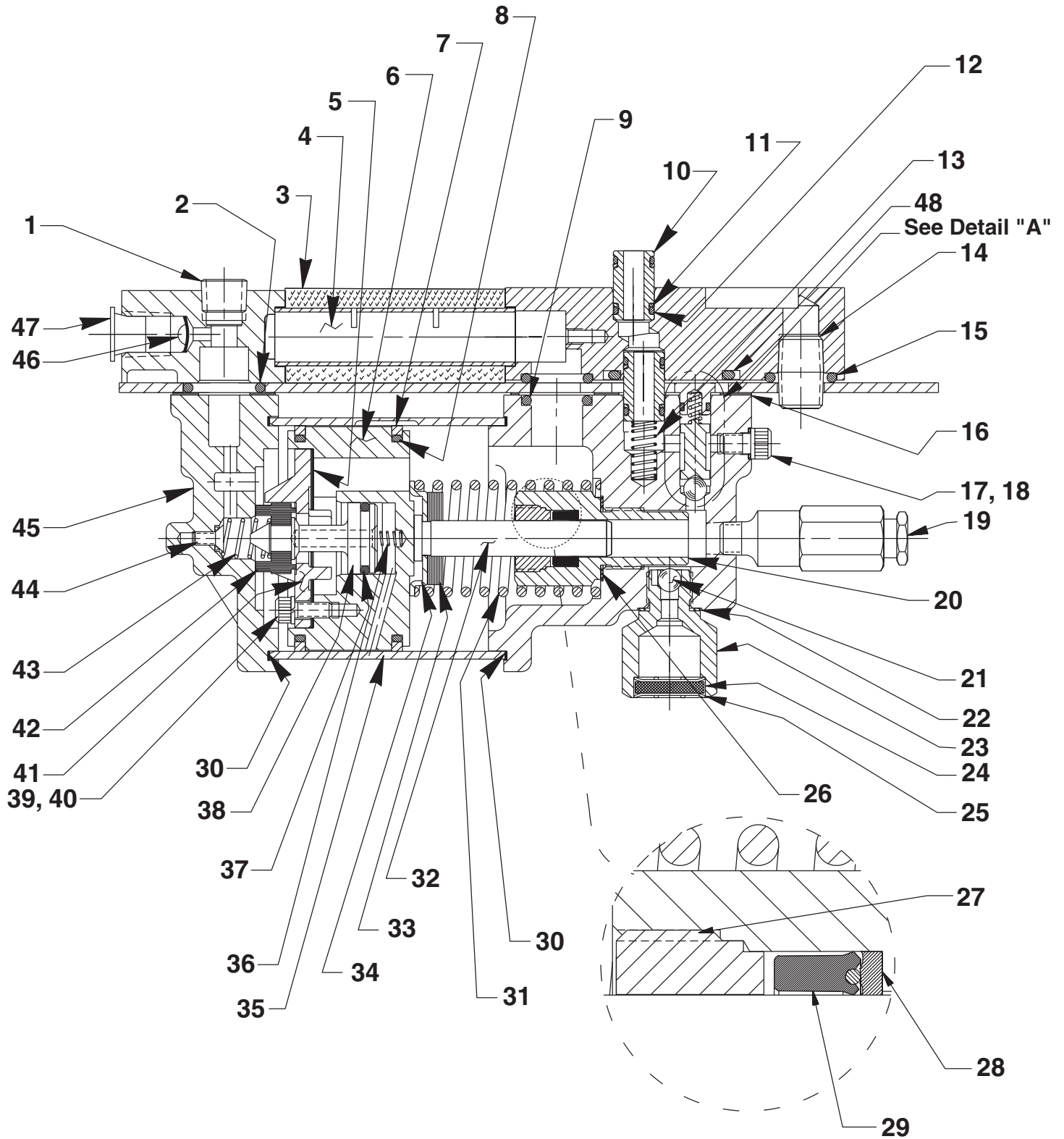
Part numbers marked with an asterisk (*) are contained in Repair Kit No. 300968.

Refer to any operating instructions included with this product for detailed information about operation, testing, disassembly, reassembly, and preventive maintenance.

Items found in this parts list have been carefully tested and selected. **Therefore: Use only genuine Hytec replacement parts!**

Additional questions can be directed to our Technical Services Department.

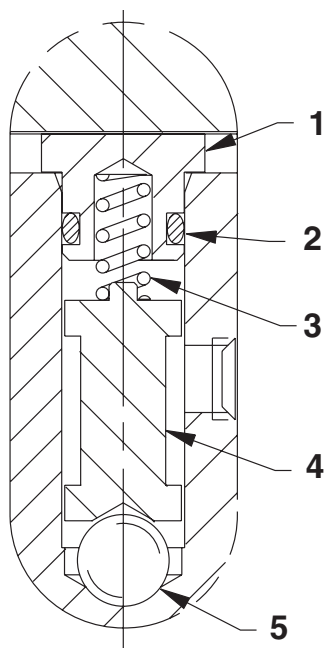
BASIC ASSEMBLY



Parts List, Form No. 101898, Back sheet 2 of 3

Item No.	Part No.	No. Req'd	Description	Item No.	Part No.	No. Req'd	Description
1	14972	1	Pipe Plug (1/4 NPTF)	27	*351662	1	Retainer (Note: See "INSTRUCTIONS FOR RETAINER REPLACEMENT" on sheet 3 of 3.)
2	*251717	1	O-ring (1" X 5/8 X 3/16)	28	*12488	1	Backup Washer
3	*29992	1	Foam Tube	29	*253095	1	U-cup Packing
4	28387	1	Muffler	30	*17429	2	Backup Ring
5	*28239	1	Gasket	31	*13938	1	Compression Spring (1.452 O.D. X 4-7/16" Lg.)
6	52390	1	Piston Body	32	28400	1	Piston
7	*14265	2	Piston Ring	33	202613	1	Bumper
8	*251835	2	O-ring (2-1/2" X 2-5/16" X 3/32)	34	211082	1	Spring Guide
9	*10272	1	O-ring (3/4 X 9/16 X 3/32)	35	37434	1	Air Cylinder (Note: Locate groove on upper half (top) of pump with chamfered tube end towards rear head as shown.)
10	21094	2	Bushing	36	*12692	1	Compression Spring (3/16 O.D. X 1-11/16" Lg.)
11	*11863	4	Backup Washer	37	*211052	1	O-ring (.900 X .706 X .097)
12	*10268	4	O-ring (1/2 X 3/8 X 1/16)	38	305475	1	Exhaust Valve Stem
13	*16448	1	Compression Spring (5/16 O.D. X 13/16 Lg.)	39	10241	3	Lockwasher (For #10 bolt)
14	15024	1	Close Nipple	40	211054	3	Screw (#10-24 X 1/2 Lg.; Torque to 50/55 in. lbs.)
15	*10276	2	O-ring (1" X 3/4 X 1/8)	41	33822	1	Piston End Plate
16	*351021	1	Gasket	42	*28183	1	Piston Poppet
17	*10442	1	Washer (3/8 X 1/4 X 1/32)	43	*205679	1	Spring (.485 O.D. X .915 Lg.)
18	10002	1	Cap Screw (1/4-20 UNC X 3/8 Lg.; Torque to 90/100 in. lbs.)	44	205674	1	Screw (8-32 UNC X 3/8 Lg.; Torque to 12/18 in. lbs.)
19	21278-48	1	Relief Valve (Set at 4,900/5,300 PSI. Apply loctite 592 [Power Team #905516] or equiv. & torque to 150/170 in. lbs.)	45	51480	1	Rear Head
20	421642	1	Cylinder (Torque to 90/100 ft. lbs.)	46	*216296	1	Filter Disc
21	*10423	1	Steel Ball (9/32 Dia.)	47	14794	1	Plastic Cap
22	*10261	1	Copper Washer (3/4 X 19/32 X 1/32)	48	*11841	1	O-ring (1.62 x 1.37 Nitrile)
23	48010	1	Filter Adapter (Torque to 40/50 ft. lbs.)				
24	214578	1	Filter				
25	214586	2	Internal Retaining Ring				
26	*10263	1	Copper Washer (1" X .765 X 1/32)				

Part numbers marked with an asterisk (*) are contained in Repair Kit No. 300968.



DETAIL "A"

Item No.	Part No.	No. Req'd	Description
1	36497	1	Check Valve Retainer
2	*12522	1	O-ring (3/8 X 1/4 X 1/16; Urethane)
3	*10445	1	Compression Spring
4	202568	1	Ball Guide
5	*10423	1	Steel Ball (9/32 Dia.)

Part numbers marked with an asterisk (*) are contained in Repair Kit No. 300968.

Note: Shaded areas reflect last revision(s) made to this form.

INSTRUCTIONS FOR RETAINER REPLACEMENT

Your pump's retainer is locked into place by one of the two following methods. Determine which method was used on your pump's retainer, then follow the appropriate steps to remove the old and install and stake the new.

Method 1 - Retainer shows no sign of stake marks

1. This retainer has been locked in place with a Loctite product. To replace it, a moderate amount of heat needs to be applied to the cylinder nut (in the area of the retainer) to soften the existing Loctite allowing it to be removed.
2. Install the new retainer into the cylinder nut and torque to 80/100 in. lbs. **Note: Do not use a Loctite product this time but stake the new retainer in place according to instructions in Step 3.**
3. To lock retainer into place, use a center punch positioned in the seam between the retainer and the cylinder nut and stake the new retainer in two places approximately 180° apart.

Method 2 - Retainer has two stake marks in the seam between the retainer and the cylinder nut

1. For replacement of this retainer, the stake marks must be removed. Using a 1/8" or larger diameter drill bit, remove the existing stakes by drilling a short distance into the stake marks. Remove the retainer.
2. Install the new retainer into the cylinder nut and torque to 80/100 in. lbs.
3. To lock retainer into place, use a center punch positioned in the seam between the retainer and the cylinder nut and stake the new retainer in two places approximately 180° apart.

NOTE: Do not stake in the old stake marks.

