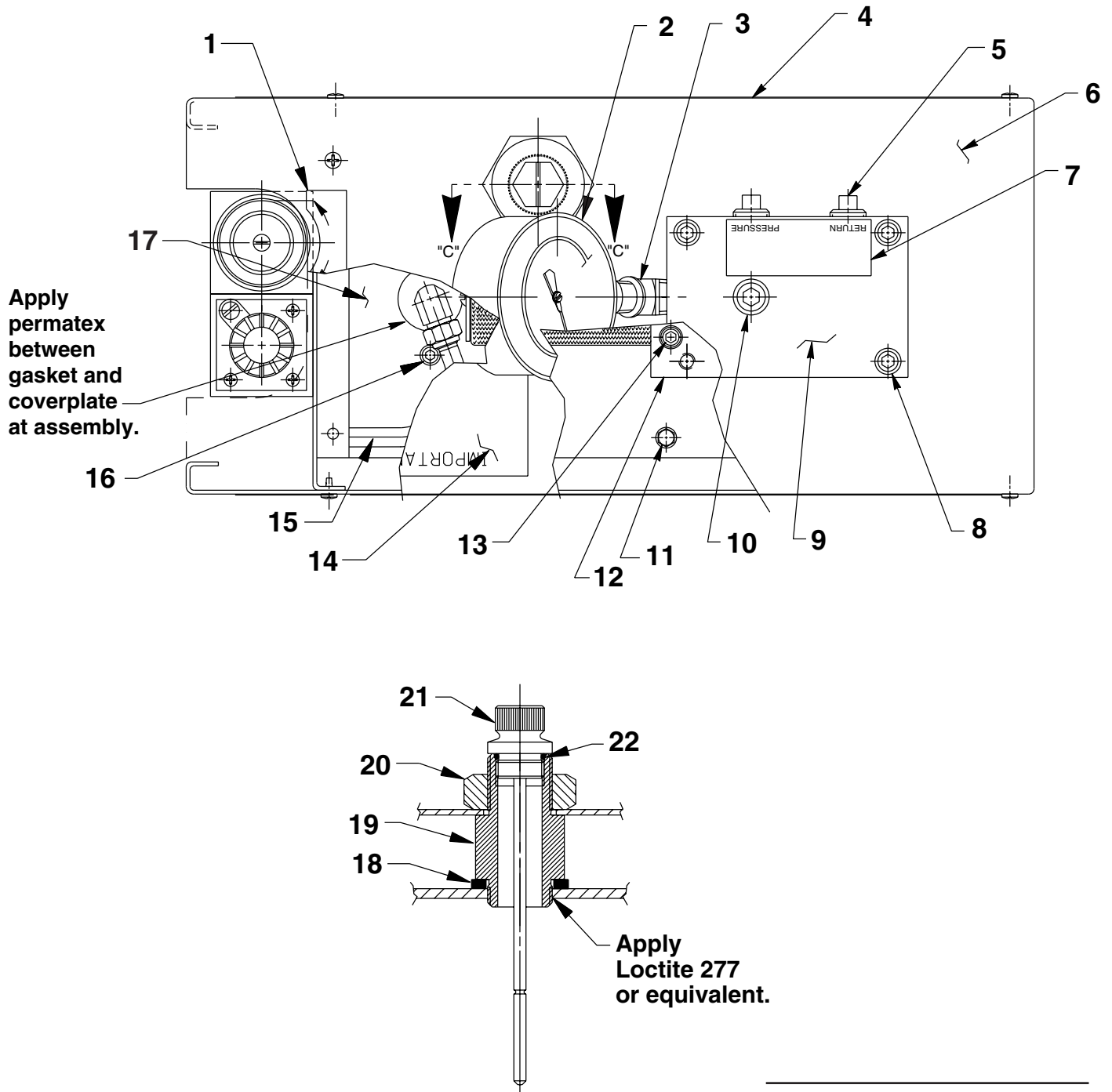


**MODEL G
AIR HYDRAULIC PUMP**

Rated Capacity: 3,325 PSI at 125 PSI Air Max.



Parts List, Form No. 108012, Back sheet 1 of 3

Item No.	Part No.	No. Req'd	Description
1	202076	1	Decal
2	17946	1	Pressure Gauge
3	10645	1	45° Street Elbow
4	309386	2	Decal
5	10970	2	Pipe Plug
6	58760WH2	1	Top Cover
7	210995	1	Manifold Decal
8	10020	4	Cap Screw (1/4-20 UNC X 1-1/4" Lg.)
9	45837	1	Manifold
10	10479	1	Pipe Plug
11	211060	6	Screw (#9-15 X 1" Lg.; Torque to 25/30 in. lbs.)
12	58714	1	Manifold
13	11151	4	Cap Screw (10-24 UNC X 1-1/4" Lg.; Torque to 50/60 in. lbs.)
14	350492	1	Decal
15	14726	.33 ft.	Tubing
16	11434	2	Cap Screw (10-24 UNC X 1/2 Lg.; Torque to 50/60 in. lbs.)
17	58761WH2	1	Cover Plate
18	252041	1	Sealing Washer
19	351190	1	Filler Plug Adapter
20	252042	1	Hex Jam Nut
21	252070	1	Dip Stick Assembly
22	*10273	1	O-ring (13/16 X 5/8 X 3/32)

PARTS INCLUDED BUT NOT SHOWN

211060	4	Screw (#9-15 X 1" Lg.; Torque to 25/30 in. lbs.; Note: For pump mounting purposes only.)
--------	---	--

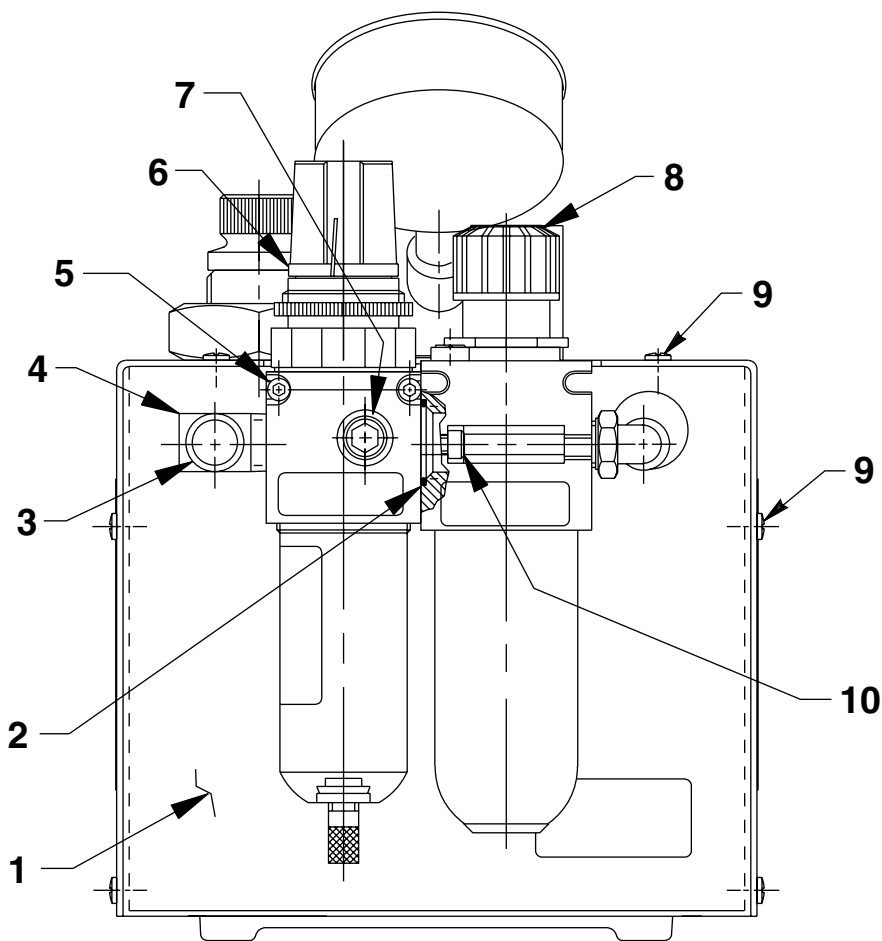
Part numbers marked with an asterisk (*) are contained in Repair Kit No. 301013.

Refer to any operating instructions included with this product for detailed information about operation, testing, disassembly, reassembly, and preventive maintenance.

Items found in this parts list have been carefully tested and selected. **Therefore: Use only genuine Hytec replacement parts!**

Additional questions can be directed to our Technical Services Department.

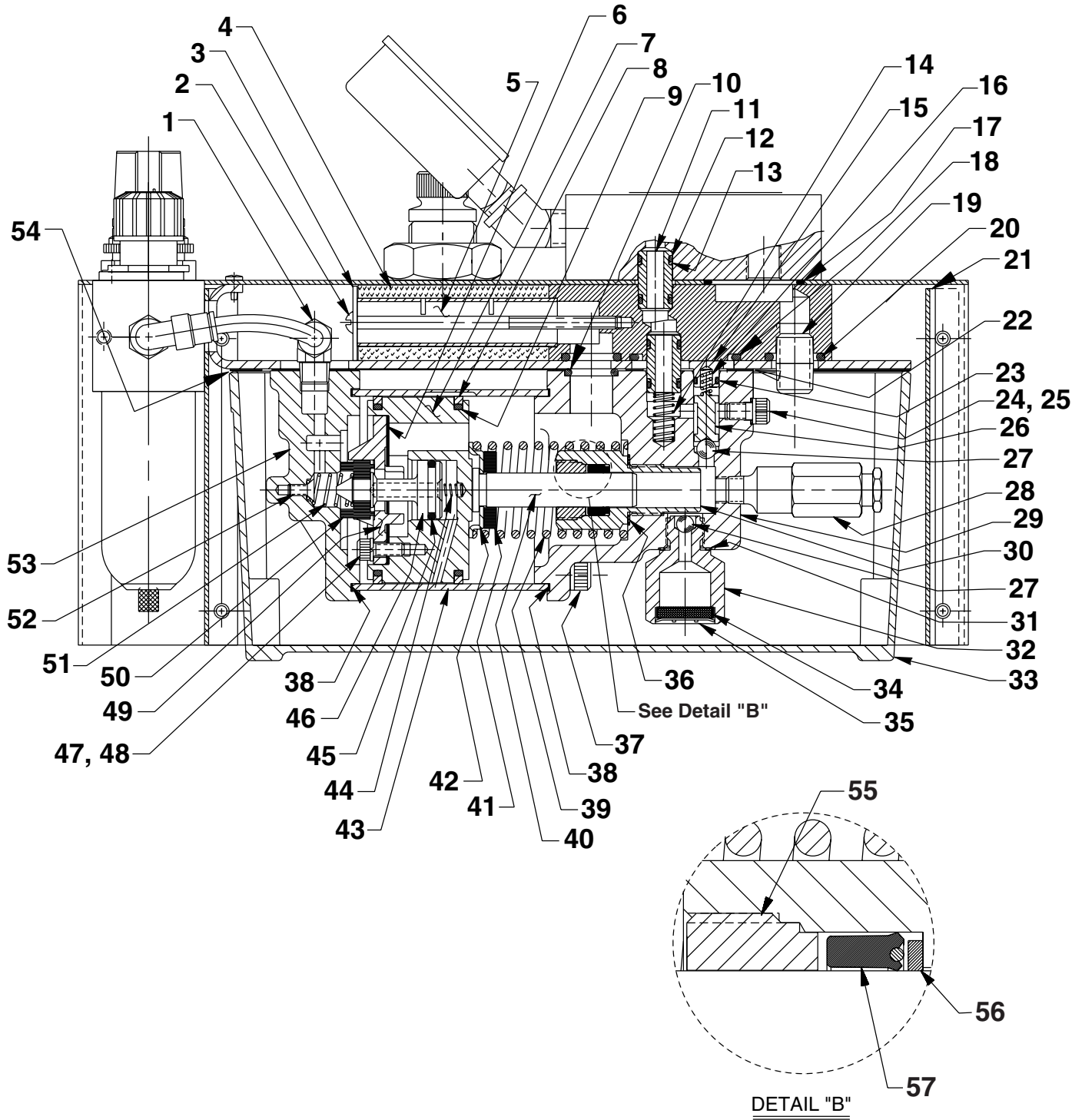
END VIEW



Item No.	Part No.	No. Req'd	Description
1	421229PU2	1	Front Panel
2	*10273	1	O-ring (13/16 X 5/8 X 3/32; Included with Item #8)
3	14794	1	Plastic Cap
4	15373	1	Elbow
5	252064	2	Soc. Hd. Cap Screw
6	252032	1	Filter Regulator (For replacement bowl, order #251812; For replacement filter, order #251811)
7	15499	2	Pipe Plug
8	252030	1	Air Lubricator (For replacement bowl, order #251813; Includes O-ring [Item #2] & Cap Screw [Item #10])
9	14126	10	Screw (10-24 X 3/8 Lg.)
10	10826	2	Cap Screw (#8-32 UNC X 1/2 Lg.; Included with Item #8)

Part numbers marked with an asterisk (*) are contained in Repair Kit No. 301013.

BASIC PUMP ASSEMBLY



Item No.	Part No.	No. Req'd	Description	Item No.	Part No.	No. Req'd	Description
1	15457	2	Elbow	32	48010	1	Filter Adapter (Torque to 40/50 ft. lbs. oiled)
2	16453	1	Screw (#10-24 UNC X 4" Lg.; Apply Loctite 277 or equiv. to external thds.)	33	61243	1	Reservoir
3	16450	1	Steel Washer (For 1/4 Bolt)	34	214578	1	Filter
4	*29992	1	Foam Tube	35	214586	1	Internal Retaining Ring
5	28387	1	Muffler	36	*10263	1	Copper Washer (1" X .765 X 1/32)
6	*28239	1	Gasket	37	17428	4	Soc. Hd. Cap Screw (1/4-20 UNC X 3-1/2" Lg.; Torque to 85/95 in. lbs. oiled; Note: Cross torque in increments of 30 in. lbs.)
7	52390	1	Piston Body	38	*17429	2	Backup Ring (2-15/16" X 2-3/4" X .045)
8	*14265	2	Piston Ring	39	*13938	1	Spring (1.452 O.D. X 4-7/16" Lg.)
9	*251835	2	O-ring (2-1/2" X 2-5/16" X 3/32)	40	350071	1	Piston
10	*10272	1	O-ring (3/4 X 9/16 X 3/32)	41	250205	1	Bumper
11	21094	2	Bushing	42	250206	1	Spring Guide
12	*10268	4	O-ring (1/2 X 3/8 X 1/16)	43	37434	1	Air Cylinder (Note: Locate groove on upper half (Top) of pump with chamfered tube end towards rear head as shown.)
13	*11863	4	Backup Washer (1/2 X 3/8 X 1/16)	44	*12692	1	Compression Spring (3/16 O.D. X 1-11/16" Lg.)
14	16448	1	Compression Spring (5/16 O.D. X 13/16 Lg.)	45	*211052	1	O-ring (.900 X .706 X .097)
15	36497	1	Check Valve Retainer	46	305475	1	Exhaust Valve Stem
16	*10445	1	Compression Spring (5/32 O.D. X 3/4 Lg.)	47	*10241	3	Lockwasher (For #10 bolt)
17	*16684	1	O-ring (1-3/16" X 1" X 3/32)	48	211054	3	Screw (#10-24 X 1/2 Lg.; Torque to 50/55 in. lbs.)
18	*11841	1	O-ring (1.62 x 1.37 Nitrile)	49	33822	1	Piston End Plate
19	15024	1	Close Nipple	50	*28183	1	Piston Poppet
20	*10276	2	O-ring (1" X 3/4 X 1/8)	51	*205679	1	Compression Spring (.485 O.D. X .915 Lg.)
21	42357PU2	1	Front Panel	52	*205674	1	Screw (8-32 UNC X 3/8 Lg.; Torque to 12/18 in. lbs.)
22	*351021	1	Gasket	53	37468	1	Rear Head
23	*12522	1	O-ring (3/8 X 1/4 X 1/16)	54	*33853	1	Reservoir Gasket
24	*10442	2	Washer (3/8 X 1/4 X 1/32)	55	*351897	1	Retainer (Note: See "INSTRUCTIONS FOR RETAINER REPLACEMENT" on back sheet 3 of 3.)
25	10002	1	Cap Screw (1/4-20 UNC X 3/8 Lg.; Torque to 90/110 in. lbs.)	56	*12389	1	Backup Washer (.69 x .50)
26	202568	1	Ball Guide	57	*253429	1	U-cup (.75 x .50 x .25 H)
27	*10423	2	Steel Ball (9/32 Dia.)				
28	21278-35	1	Relief Valve (Set at 3,500/3,800 PSI; Apply loctite 592 [Power Team #905516] or equiv. & torque to 150/170 in. lbs.)				
29	64767	1	Pump Body				
30	421834	1	Cylinder (Torque to 90 /100 ft. lbs. oiled)				
31	*10261	1	Copper Washer (3/4 X 19/32 X 1/32)				

Part numbers marked with an asterisk (*) are contained in Repair Kit No. 301013.

Note: Shaded areas reflect last revision(s) made to this form.

INSTRUCTIONS FOR RETAINER REPLACEMENT

Your pump's retainer is locked into place by one of the two following methods. Determine which method was used on your pump's retainer, then follow the appropriate steps to remove the old and install and stake the new.

Method 1 - Retainer shows no sign of stake marks

1. This retainer has been locked in place with a Loctite product. To replace it, a moderate amount of heat needs to be applied to the cylinder nut (in the area of the retainer) to soften the existing Loctite allowing it to be removed.
2. Install the new retainer into the cylinder nut and torque to 80/100 in. lbs. **Note: Do not use a Loctite product this time but stake the new retainer in place according to instructions in Step 3.**
3. To lock retainer into place, use a center punch positioned in the seam between the retainer and the cylinder nut and stake the new retainer in two places approximately 180° apart.

Method 2 - Retainer has two stake marks in the seam between the retainer and the cylinder nut

1. For replacement of this retainer, the stake marks must be removed. Using a 1/8" or larger diameter drill bit, remove the existing stakes by drilling a short distance into the stake marks. Remove the retainer.
2. Install the new retainer into the cylinder nut and torque to 80/100 in. lbs.
3. To lock retainer into place, use a center punch positioned in the seam between the retainer and the cylinder nut and stake the new retainer in two places approximately 180° apart.

NOTE: Do not stake in the old stake marks.

