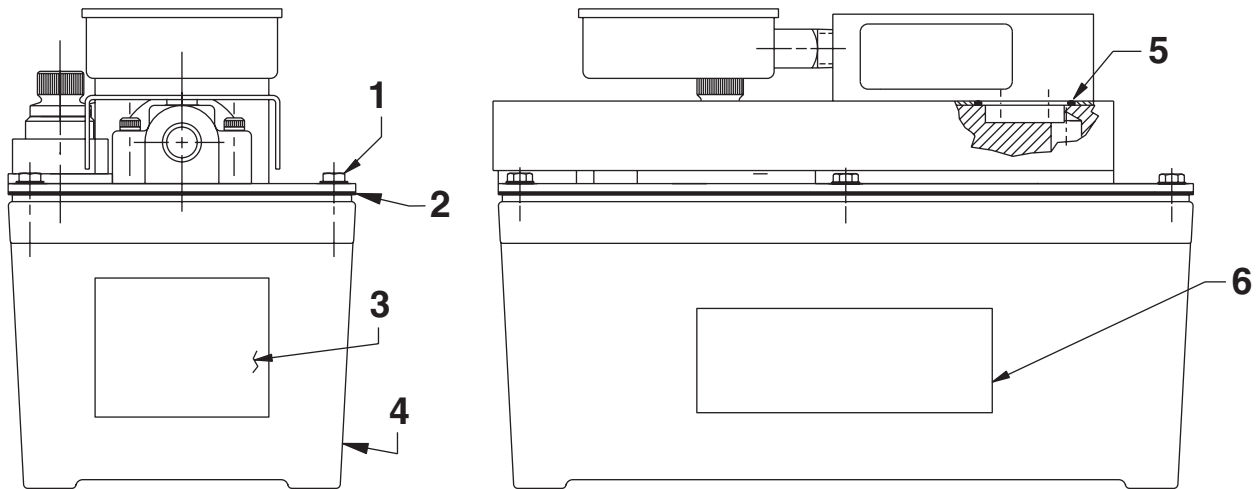


**MODEL G
AIR/HYDRAULIC PUMP
GENERAL SECTION**



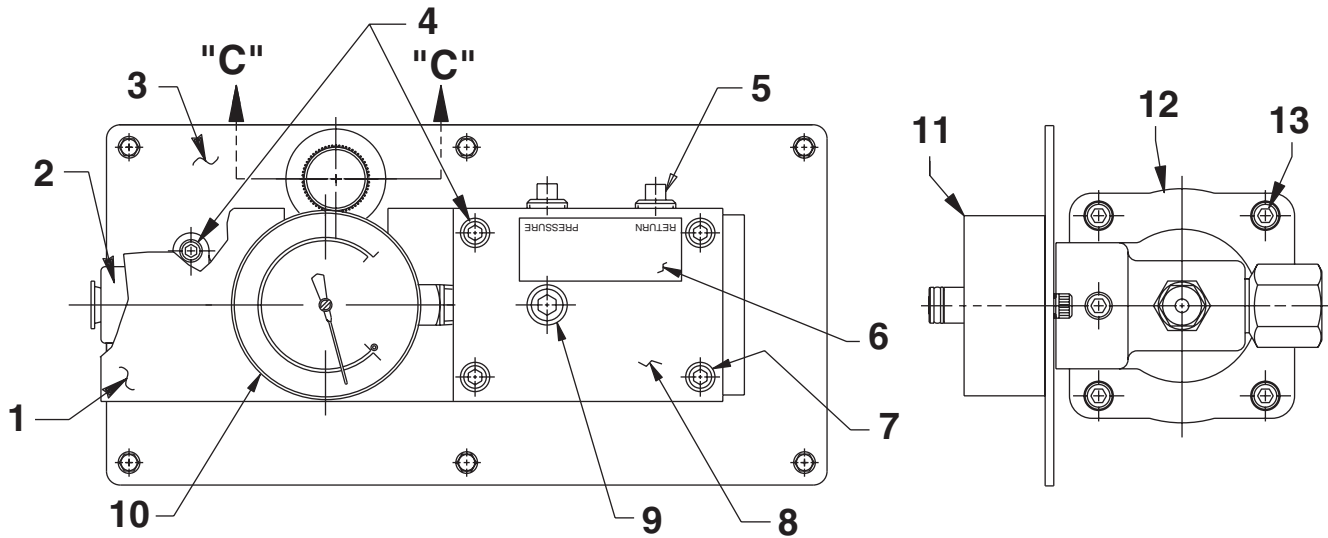
Item No.	Part No.	No. Req'd	Description
1	211060	6	Hex Hd. Washer Screw (9-15 X 1" Lg.; Torque to 25/35 in. lbs.)
2	*33853	1	Reservoir Gasket (Note: Trim to allow part no. 351214 to pass through freely.)
3	305494	1	Instruction Decal
4	61243	1	Reservoir
5	16684	1	O-ring (1-3/16" X 1" X 3/32)
6	211533	2	Trade Name Decal (Hytec)

PARTS INCLUDED BUT NOT SHOWN

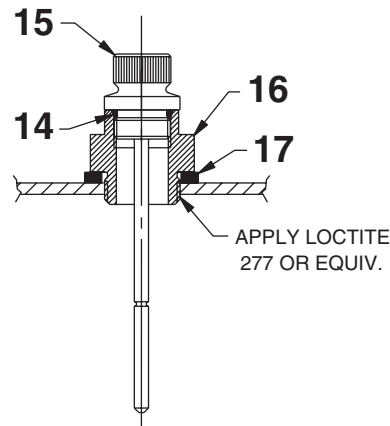
211060	4	Hex Hd. Washer Screw (9-15 X 1" Lg.; Torque to 25/35 in. lbs.; For pump mounting purposes only.)
--------	---	--

Part numbers marked with an asterisk (*) are contained in Repair Kit No. 301015.

TOP & END VIEW



SECTION C-C

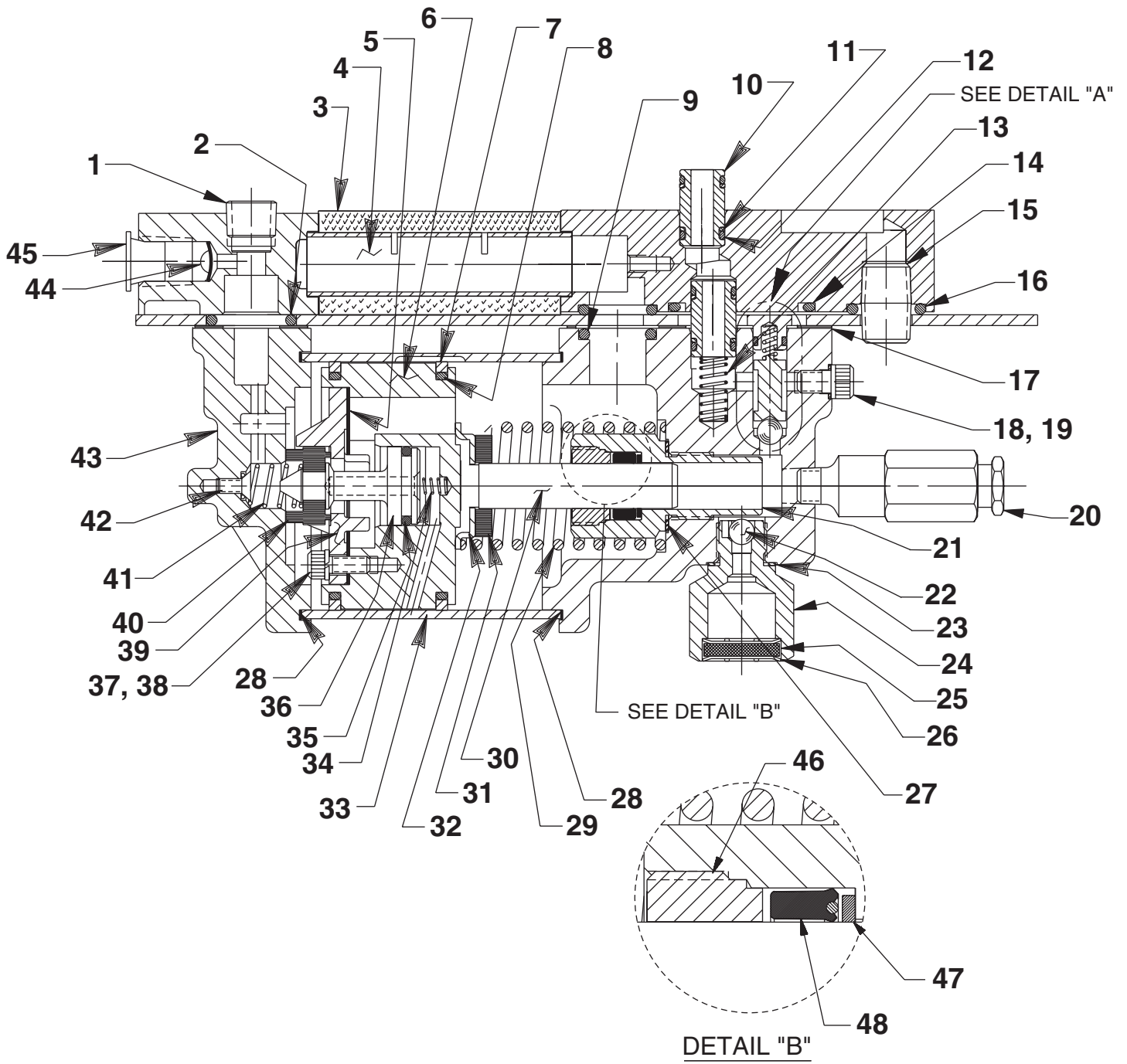


Item No.	Part No.	No. Req'd	Description
1	351219BK2	1	Shroud
2	309246	1	Intake Manifold
3	421240BK2	1	Cover Plate
4	11151	6	Soc. Hd. Screw (10-24 X 1-1/4" Lg.; Torque to 50/60 in. lbs.)
5	10970	2	Plug Fitting (1/4 NPTF)
6	210995	1	Trade Name Decal (Power Team)
7	10020	4	Soc. Hd. Screw (1/4-20 X 1-1/4" Lg.)
8	45837	1	Manifold
9	10479	1	Plug Fitting (1/4 NPTF)
10	17946	1	Gauge (0-6000 PSI; 2-1/2" Dia.)

Item No.	Part No.	No. Req'd	Description
11	58714	1	Manifold
12	64767	1	Pump Body
13	17428	4	Soc. Hd. Screw (1/4-20 X 1/2 Lg.; Torque to 85/95/in. lbs. oiled; Note: Cross torque in increments of 30 in. lbs.)
14	*10273	1	O-ring (13/16 X 5/8 X 3/32)
15	252076	1	Dip Stick
16	351214	1	Filler Plug Adapter
17	252041	1	Seal Washer

Part numbers marked with an asterisk (*) are contained in Repair Kit No. 301015.

BASIC PUMP ASSEMBLY



Refer to any operating instructions included with this product for detailed information about operation, testing, disassembly, reassembly, and preventive maintenance.

Items found in this parts list have been carefully tested and selected. **Therefore: Use only genuine Power Team replacement parts!**

Additional questions can be directed to our Technical Services Department.

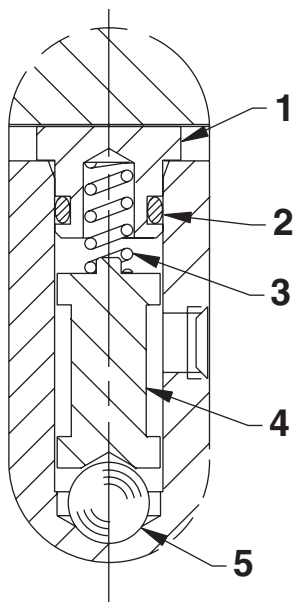
Parts List, Form No. 108014, Back sheet 2 of 3

Item No.	Part No.	No. Req'd	Description
1	14972	1	Plug Fitting (1/4 PTF)
2	*251717	1	O-ring (1" X 5/8 X 3/16)
3	*29992	1	Foam Tube
4	28387	1	Muffler
5	*28239	1	Gasket
6	52390	1	Piston Body
7	*14265	2	Piston Ring
8	*251835	2	O-ring (2-1/2" X 2-5/16" X 3/32)
9	*10272	1	O-ring (3/4 X 9/16 X3/32)
10	21094	2	Bushing
11	11863	4	Backup Washer (1/2 X 3/8 X 1/16)
12	10268	4	O-ring (1/2 X 3/8 X 1/16)
13	16448	1	Spring (5/16 O.D. X 13/16 Lg.)
14	*11841	1	O-ring (1.62 x 1.37 Nitrile)
15	15024	1	Straight Fitting (1/4 NPTF)
16	*10276	2	O-ring (1" X 3/4 X 1/8)
17	*351021	1	Cover Plate Gasket
18	*10442	1	Copper Washer (3/8 X 1/4 X 1/32)
19	10002	1	Soc. Hd. Screw (1/4-20 X 3/8 Lg.; Torque to 90/100 in. lbs.)
20	21278-48	1	Relief Valve (Set at 4,900 to 5,300; Apply loctite 592 [Power Team #905516] or equiv. & torque to 150/170 in. lbs.)
21	421834	1	Blank Cylinder (Torque to 90/100 ft. lbs. oiled)
22	*10423	1	Ball (9/32" Dia.)
23	*10261	1	Copper Washer (3/4 X 19/32 X 1/32)
24	48010	1	Filter Adapter (Torque to 40/50 ft. lbs.)
25	214578	1	Filter
26	214586	1	Internal Retaining Ring

Item No.	Part No.	No. Req'd	Description
27	*10263	1	Special Washer (1" X .765 X 1/32)
28	*17429	2	Backup Washer (2-15/16" X 2-3/4" X .045)
29	*13938	1	Spring (1.452 O.D. X 4-7/16" Lg.)
30	350071	1	Piston (1/2 in.)
31	250205	1	Bumper
32	250206	1	Spring Guide
33	37434	1	Air Cylinder (NOTE: Locate groove on upper half (top) of pump with chamfered tube end towards rear head as shown.)
34	*12692	1	Spring (3/16 O.D. X 1-11/16" Lg.)
35	*211052	1	O-ring (.900 X .706 X .097)
36	305475	1	Exhaust Valve Stem
37	*10241	3	Lockwasher (For #10 Bolt)
38	211054	3	Soc. Hd. Screw (10-24 X 1/2 Lg.; Torque to 50/55 in. lbs.)
39	33822	1	Piston End Plate Casting
40	*28183	1	Piston Poppet
41	205679	1	Spring (.485 O.D. X .915 Lg.)
42	*205674	1	Flat Hd. Screw (8-32 X 3/8 Lg.; Torque to 12/18 in. lbs.)
43	51480	1	Rear Head
44	*216296	1	Filter Disc
45	14794	1	Plastic Cap
46	*351897	1	Retainer (Note: See "INSTRUCTIONS FOR RETAINER REPLACEMENT" on sheet 3 of 3.)
47	*12389	1	Backup Washer (.69 x .50)
48	*253429	1	U-cup 9.75 x .50 x .25 H)

Part numbers marked with an asterisk (*) are contained in Repair Kit No. 301015.

DETAIL "A"



Item No.	Part No.	No. Req'd	Description
1	36497	1	Check Valve Retainer
2	*12522	1	O-ring (3/8 X 1/4 X 1/16; Urethane)
3	*10445	1	Spring (5/32 O.D. X 3/4 Lg.)
4	202568	1	Ball Guide
5	*10423	1	Ball (9/32" Dia.)

Part numbers marked with an asterisk (*) are contained in Repair Kit No. 301015.

Note: Shaded areas reflect last revision(s) made to this form.

INSTRUCTIONS FOR RETAINER REPLACEMENT

Your pump's retainer is locked into place by one of the two following methods. Determine which method was used on your pump's retainer, then follow the appropriate steps to remove the old and install and stake the new.

Method 1 - Retainer shows no sign of stake marks

1. This retainer has been locked in place with a Loctite product. To replace it, a moderate amount of heat needs to be applied to the cylinder nut (in the area of the retainer) to soften the existing Loctite allowing it to be removed.
2. Install the new retainer into the cylinder nut and torque to 80/100 in. lbs. **Note: Do not use a Loctite product this time but stake the new retainer in place according to instructions in Step 3.**
3. To lock retainer into place, use a center punch positioned in the seam between the retainer and the cylinder nut and stake the new retainer in two places approximately 180° apart.

Method 2 - Retainer has two stake marks in the seam between the retainer and the cylinder nut

1. For replacement of this retainer, the stake marks must be removed. Using a 1/8" or larger diameter drill bit, remove the existing stakes by drilling a short distance into the stake marks. Remove the retainer.
2. Install the new retainer into the cylinder nut and torque to 80/100 in. lbs.
3. To lock retainer into place, use a center punch positioned in the seam between the retainer and the cylinder nut and stake the new retainer in two places approximately 180° apart.

NOTE: Do not stake in the old stake marks.

