



These cylinders are double-acting only and do not contain return springs, making them perfect for applications where rapid, positive return is essential, or where both pushing and pulling forces are necessary.

Cylinder control can be simplified in certain applications by supplying one side of the cylinder with a constant air pressure source to control the return force. The other port can then be pressurized or released hydraulically as if it were a single-acting component.

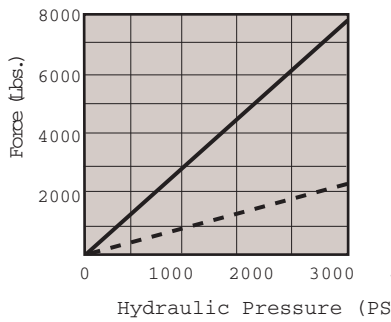
New threaded piston rods make it easier to use the cylinders in a wide variety of applications because they can now be used with Hytec threaded inserts.

Mount the cylinders by simply inserting them into a drilled hole, secure with snap rings (included) and use a feeder cap. Feeder caps have both side and end ports for plumbing variations. Or, make use of the manifold mounting option and mount directly on a flat surface. Optional mounting brackets available.

Features:

- Manifold or conventional mount
- Threaded, plated piston rod
- Double-acting
- Includes snap rings (2) and "O" ring port seals (2)

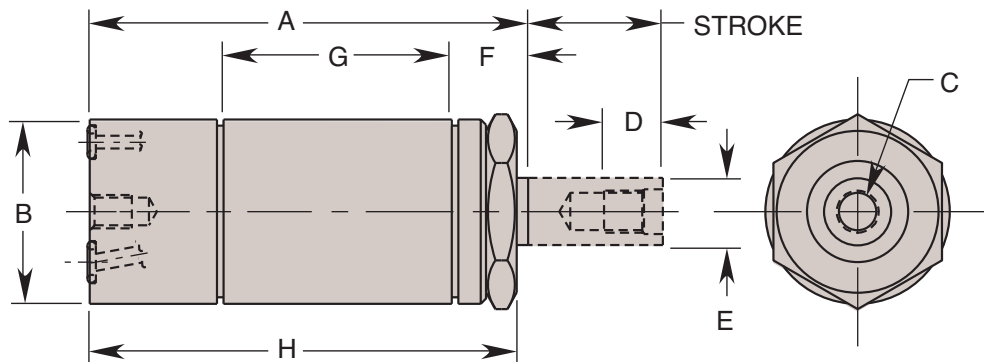
Note: See page 25 for threaded inserts.



Performance

Cylinder Advance

- Cylinder Nos. 100043 & 100044
- Cylinder Nos. 100049 & 100050



Cat. No.	Specifications						Dimensions (In Inches)								
	*Force (Lbs.)		Stroke (In.)	Eff. Area (Sq. In.)		Oil Cap. (Cu. In.)		A	B Max. Dia.	C Thread Size	D Thread Depth	E Dia.	F	G Min.	H (REF)
	Adv.	Ret.		Adv.	Ret.	Adv.	Ret.								
100043B	2,210	1,225	.500	.442	.245	.221	.123	2.750	1.368	5/16-24 UNF	.438	.500	.562	1.687	2.66
100044B			1.000			.442	.245								
100049B	7,425	4,415	.500	1.485	.883	.742	.442	3.250	2.247	5/16-24 UNF	.438	.875	.595	2.125	3.70
100050B			1.000			1.485	.883								

NOTE: * Based on 5,000 psi max. operating pressure