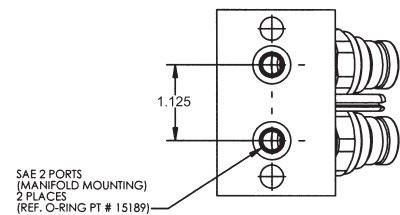
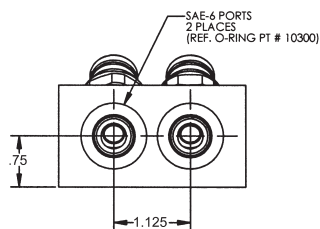
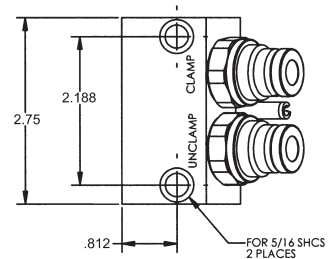
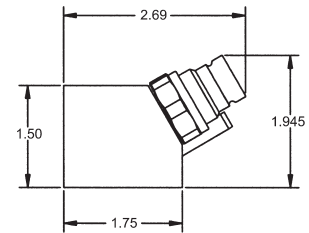
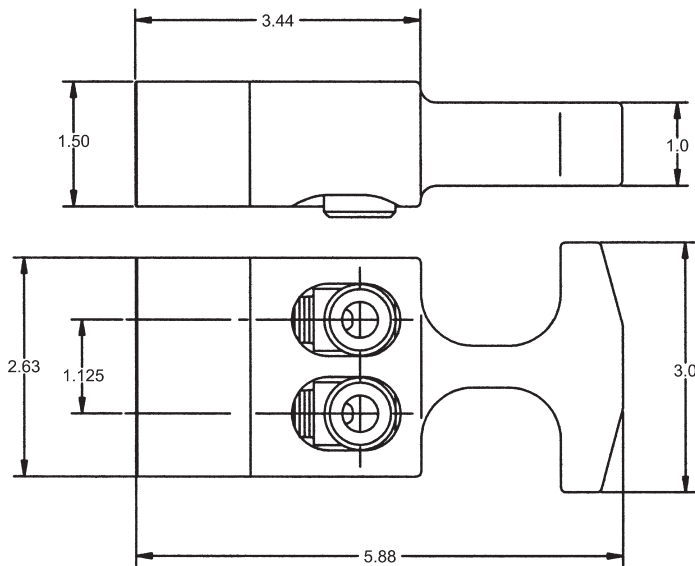


- Ideal for machining tool pallets or other applications where convenient connection of hydraulic lines are desired.
- Automatically latches when pressure is present.
- Designed for double-acting hydraulic applications.
- Ergonomically designed to minimize hand fatigue.
- Precision machined lightweight aluminum construction.



Cat. No.	Product Description	Operating Pressure
110171	Handle Assembly	1,500 to 5,000 PSI
110170	Standard manifold without check valve	1,500 to 5,000 PSI
110189	Manifold with built in check valve	1,500 to 5,000 PSI
110172	Coupler, male-half (replacement)	1,500 to 5,000 PSI