

Low Profile Cylinders



Low Profile Cylinders



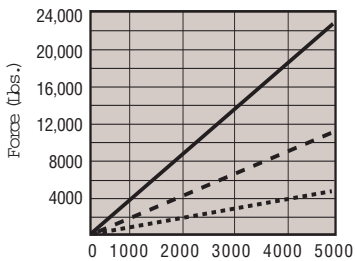
These single-acting, spring-return cylinders are designed for applications where high force and low overall height are requirements. Ideal for clamping fixtures where space is limited. The crowned piston makes them perfect for powering strap clamps, linkages or for direct contact with the workpiece. Cylinder bodies are heat treated using a special process for exceptional wear and corrosion resistance. Three sizes to choose from – the largest being only 2" high – with maximum forces ranging from 4,920 lbs. to 22,150 lbs. Each cylinder has a built-in heavy-duty spring for fast return, and case hardened piston for long service life.

The 100855 and 100925 use the same rugged design with different mounting

options. Designed for side mounting, four grade 8 mounting screws can easily resist the force of the clamp so no additional stops or clamp mounting structure is necessary.

Features:

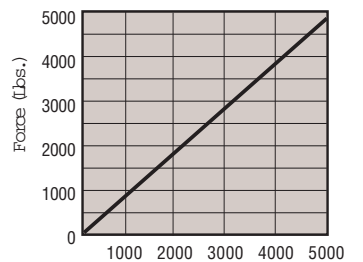
- Low overall height
- Bronze plated piston
- Piston rod wiper seal
- Heavy-duty return spring
- Heat treated and plated cylinder body
- Single-acting
- Power-Tech™ treated body for long wear and corrosion resistance



Force (Lbs.) vs Hydraulic Pressure (PSI)

Performance

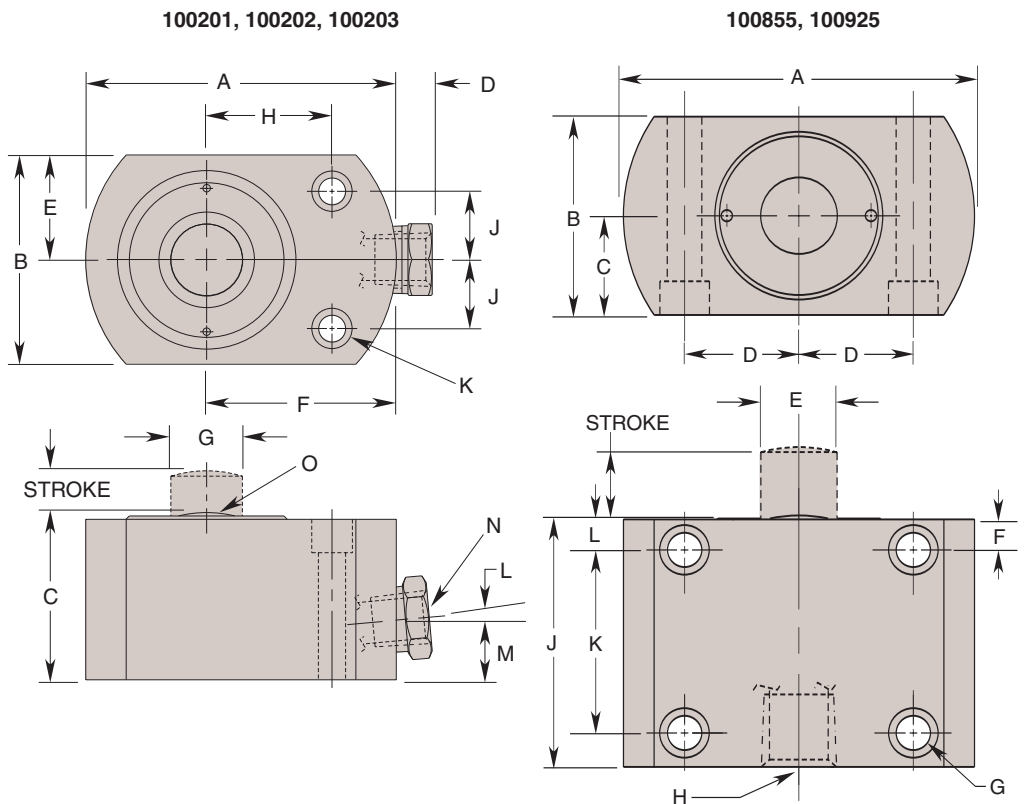
- Cylinder No. 100203
- Cylinder No. 100201
- Cylinder No. 100202



Force (Lbs.) vs Hydraulic Pressure (PSI)

Performance

- Cylinder No. 100855



Cat. No.	Specifications				Dimensions (In Inches)												
	*Force (Lbs.)	Stroke (In.)	Eff. Area (Sq. In.)	Oil Cap.	A	B	C	D	E	F	G	H	J	K	L	M	N
100855	4,920	.562	.994	.620	2.875	1.625	.812	.937	.625	.250	.281	1/4 NPTF	2.062	1.500	.282	-	-
100925		.875														.870	.250

NOTE: * Based on 5,000 psi max. operating pressure.

Cat. No.	Specifications				Dimensions (In Inches)														
	*Force (Lbs.)	Stroke (In.)	Eff. Area (Sq. In.)	Oil Cap. (Cu. In.)	A Dia.	B	C	D	E	F	G Dia.	H	J	K Dia.	L Port Angle	M	N Thread Size	O Radius	
100203	4,920	.562	.994	.62	2.562	1.635	1.667	.375	.812	1.750	.625	1.000	.562	.219	0°	.770	1/4 NPTF	1.150	
100201	11,180	.437	2.236	1.00	3.250	2.190	1.750		1.095	1.985	.750	1.312	.718	.281	5°	.630		1.250	
100202	22,150		4.430	2.00	4.000	3.000	2.000		1.500	2.270	1.125	1.560	.968	.406		1.280			

NOTE: *Based on 5,000 psi max. operating pressure.