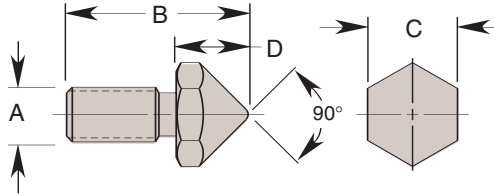
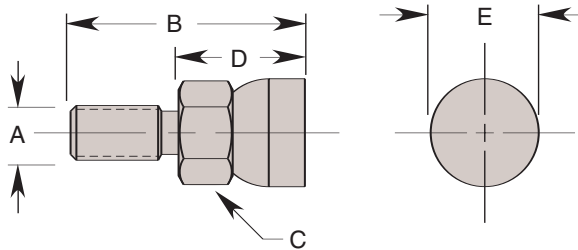


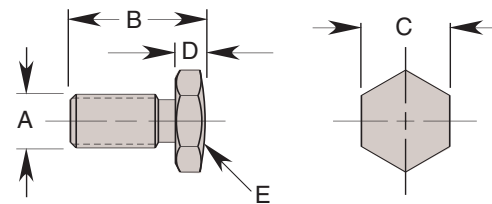
**Pointed Threaded Insert  
(500161, 500164)**



**Toggle Pad Threaded Insert  
(500162, 500165)**



**Crowned Threaded Insert  
(500160, 500163, 201884)**



POINTED THREADED INSERTS					
Cat. No.	Dimensions (In Inches)				
	Used With Cat. No.	A Thread Size	B	C Hex.	D
500161	100139, 100148, 100149, 100153, 100159, 100166, 100167, 100171	10-32 UNF	.630	.312	.250
500164	100172, 100173, 100208, 100043B, 100044B, 100049B, 100050B, 100055B, 100056B, 100061B, 100062B	5/16-24 UNF	.630	.375	.250

TOGGLE PAD THREADED INSERTS						
Cat. No.	Dimensions (In Inches)					
	Used With Cat. No.	A Thread Size	B	C Hex.	D	E Dia.
500162	100139, 100148, 100149, 100153, 100159, 100166, 100167, 100171	10-32 UNF	.812	.312	.438	.375
500165	100172, 100173, 100208, 100043B, 100044B, 100049B, 100050B, 100055B, 100056B, 100061B, 100062B	5/16-24 UNF	1.156	.563	.750	.688

CROWNED THREADED INSERTS						
Cat. No.	Dimensions (In Inches)					
	Used With Cat. No.	A Thread Size	B	C Hex.	D	E Radius
500160	100139, 100148, 100149, 100153, 100159, 100166, 100167, 100171	10-32 UNF	.480	.312	.100	.875
500163	100172, 100173, 100208, 100043B, 100044B, 100049B, 100050B, 100055B, 100056B, 100061B, 100062B	5/16-24 UNF	.480	.375	.100	.875
201884	100226, 100141, 100844, 100847, 100926	1/2-13 UNC	1.315	.750	.190	1.500