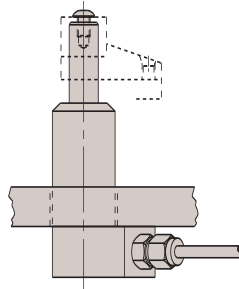
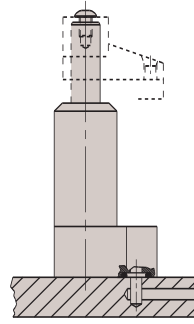


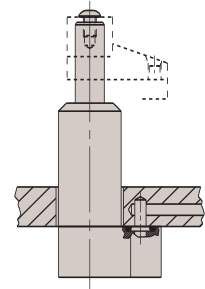
Hytec swing clamps are available in numerous mounting and porting configurations. Here are just a few examples of ways to include these clamps into your fixture designs.



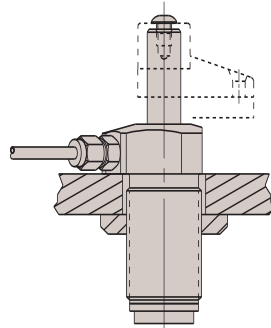
Lower Flange
Conventional Plumb



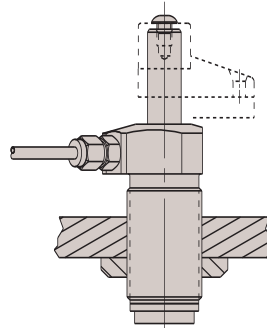
Lower Flange
Manifold Mount



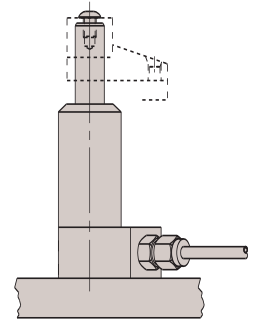
Lower Flange
Manifold Mount



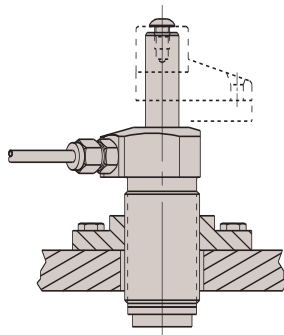
Threaded Body
with Jam Nut



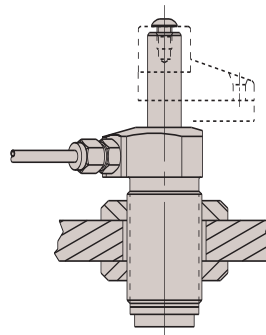
Threaded Body
with Jam Nut



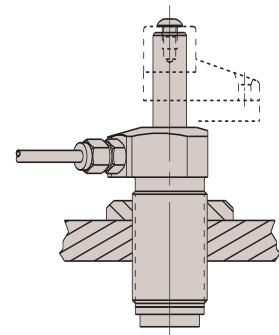
Lower Flange
Conventional Plumb



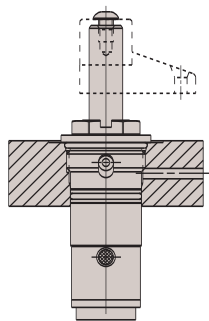
Threaded Body
With Mounting Bracket



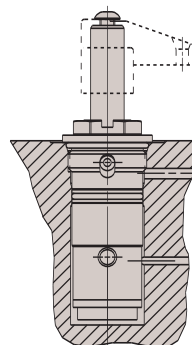
Threaded Body
With Jam Nut



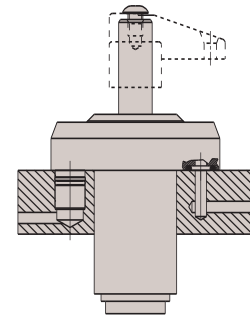
Threaded Body
With Jam Nut



Cartridge Style
Single Acting



Cartridge Style
Double Acting



Upper Flange
Double Acting