

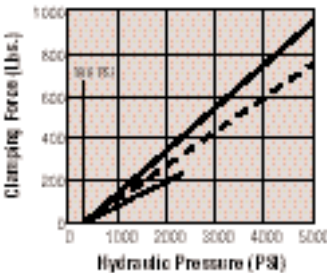
Swing/Pull Clamp - Surface Mount - Externally Plumbed - Lower Flange Style - 750 lbs.



Features

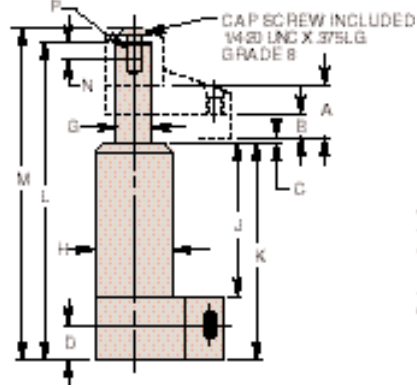
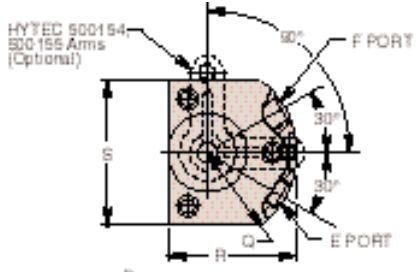
- External plumbing eliminates need to gun drill additional ports in fixture
- Can be inserted from above or below fixture plate
 - o Top mounting provides extra height to accommodate large work pieces
 - o Top mounting does not require drilling of large fixture hole
- Special rod wiper seal protects internal clamp components
- Corrosion resistant construction
- Heat treated, chrome plated piston rod
- Unique "Live Roller" swing mechanism for increased service life

- Power-Tech® treated body and hardened cam for long wear and corrosion resistance
- Single-acting and double-acting models are dimensionally interchangeable
- Straight pull capacity 950 lbs. at 5,000 psi max.

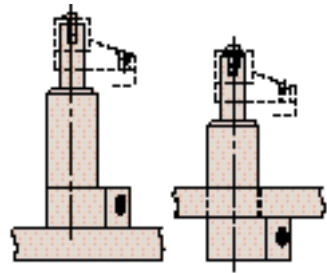


Performance
 Clamp Nos. 110110, 110111, 110112, 110113, 110114, 110115

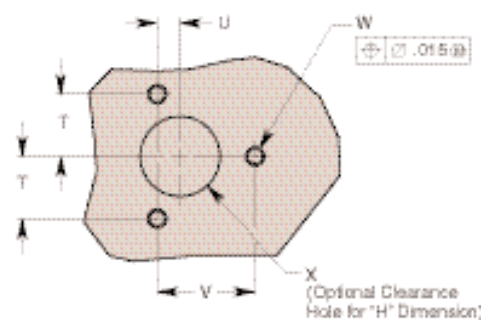
— With Hytec 50 D1154 Arm (4.25' long)
 - - With Hytec 50 D1154 Arm (1.25' long)
 . . . Straight Pull



Mounting Options



Mating Hole Pattern



Cat. No.	Specifications						Dimensions (In Inches)							
	Oper.	Swing Direction	*Force (Lbs.)	Eff. Area (Sq. In.)		Oil Cap. (Cu. In.)		A Total Stroke	B Clamping Stroke	C	D	E Clamp Port	F Unclamp Port	
110110	Single-Acting	LH (Counterclockwise)	750	.195	.160	.360	.818	.345	.108	.540	3/16-20 UNF SAE-4	†Breather Plug 3/16-20 UNF SAE-4		
110111		RH (Clockwise)												
110112		Straight Pull												
110113	Double-Acting	LH (Counterclockwise)											.441	.360
110114		RH (Clockwise)												
110115		Straight Pull												

Cat. No.	Dimensions (In Inches)															
	††G Dia.	H Dia.	J	K	L	M	N Thread Min.	P Thread Size	Q Radius	R	S	T	U	V	W Thread Size	X Dia.
110110	.560	1.210	2.379	3.359	4.912	5.138	.275	1/4-20 UNC	1.375	1.995	2.250	.827	.306	1.306	1/4-20 UNC	1.235 1.255
110111																
110112																
110113																
110114																
110115																

NOTE: * With 1.25" long arm at 5,000 psi maximum operating pressure. † Do not pressurize - single-acting only. †† See page 59 for custom arm mounting. Internal cam may be removed for an unguided straight pull. See page 58 for maximum operating speeds.