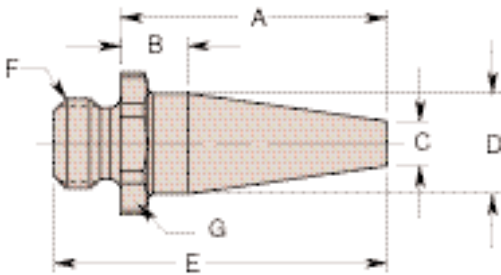


500176



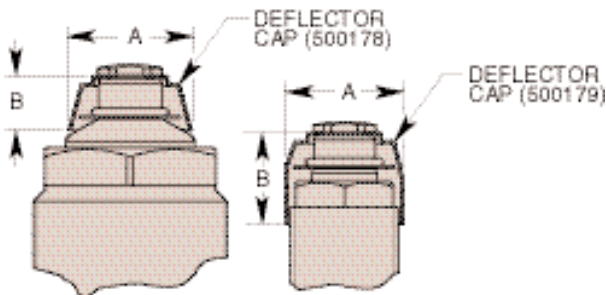
Cat. No.	Dimensions (In Inches)						
	A	B	C Dia.	D Dia.	E	F Thd. Size	G Hex
500176	1.500	.376	.250	.562	1.875	½-20 UNF	.688
500176	1.500	.376	.250	.562	1.875	½-20 UNF	.688

Rest Button

This Rest Button is designed to extend the reach of all Hytec threaded body work supports. All of Hytec's fluid-advanced and air-advanced threaded body work supports must be able to "breathe" air for proper operation. Proper filtration as it breathes is also critical for maximum service life. This button contains the same filtered breather port as the standard rest button. It is easily modified above the hex to fit your exact requirements. Its tapered design minimizes weight and off-center loading.

- Fits 1,300 and 4,000 lb, Work Supports
- Built-in filter element
- Provides 1.375" additional reach beyond standard button
- Easily modified for your application

Additional end effectors will add weight and may affect performance. If neither the standard nor the optional 500176 rest buttons are appropriate for your application, contact Hytec for more design information.



Cat. No.	Dimensions (In Inches)		Work Support Capacity
	A	B	
500178	1.435	.635	4,000 lbs.
500179	1.410	1.060	1,300 lbs.

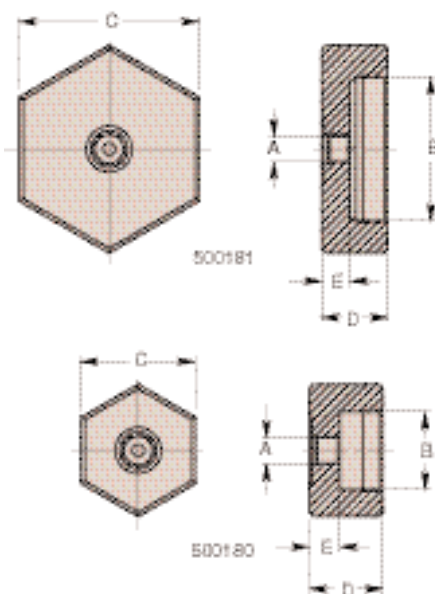
Coolant Deflector Caps

These Coolant Deflector Caps are designed to reduced exposure of the work support's breather/filter to coolant and contaminants. They are designed for applications where the work support is actuated either during or soon after exposure to coolant floods. Used in conjunction with careful aiming of coolant jets, they can prevent the breather port from filling with coolant that is later drawn inside the work support as it is actuated.

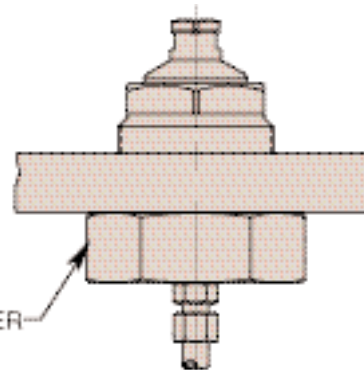
The caps are assembled between the work support plunger and the rest button and serve as an "umbrella" for the breather port. (This increases the height of the assembled work support by .030")

The caps are designed for vertical-up and horizontal applications where coolant jets are not directly aimed at the gap between the cap and work support plunger.

These caps are not appropriate for submerged or vertical-down applications.



Cat. No.	Work Support Cap. (Lbs.)	Use With
500180	1,300	100872, 100874
500181	4,000	100882, 100884



Feeder Caps

These Feeder Caps are designed to allow bulkhead mounting Hytec's fluid advanced and spring advanced threaded body work supports. Bulkhead mounting allows the work support to be mounted in a threaded hole in a plate. The feeder cap connects the work support to the hydraulic system via a SAE-4 port. The feeder cap saves space over the standard base and provides a connection at the end of the work support. The work support should be locked to the bulkhead plate using a jam nut or by the feeder cap itself.

Cat. No.	Dimensions (In Inches)				
	A	B	C Hex	D	E
500180	½-20 UNF SAE-4	1¼-16	1.750	1.125	.460
500181		2¼-16	2.750	1.010	.435