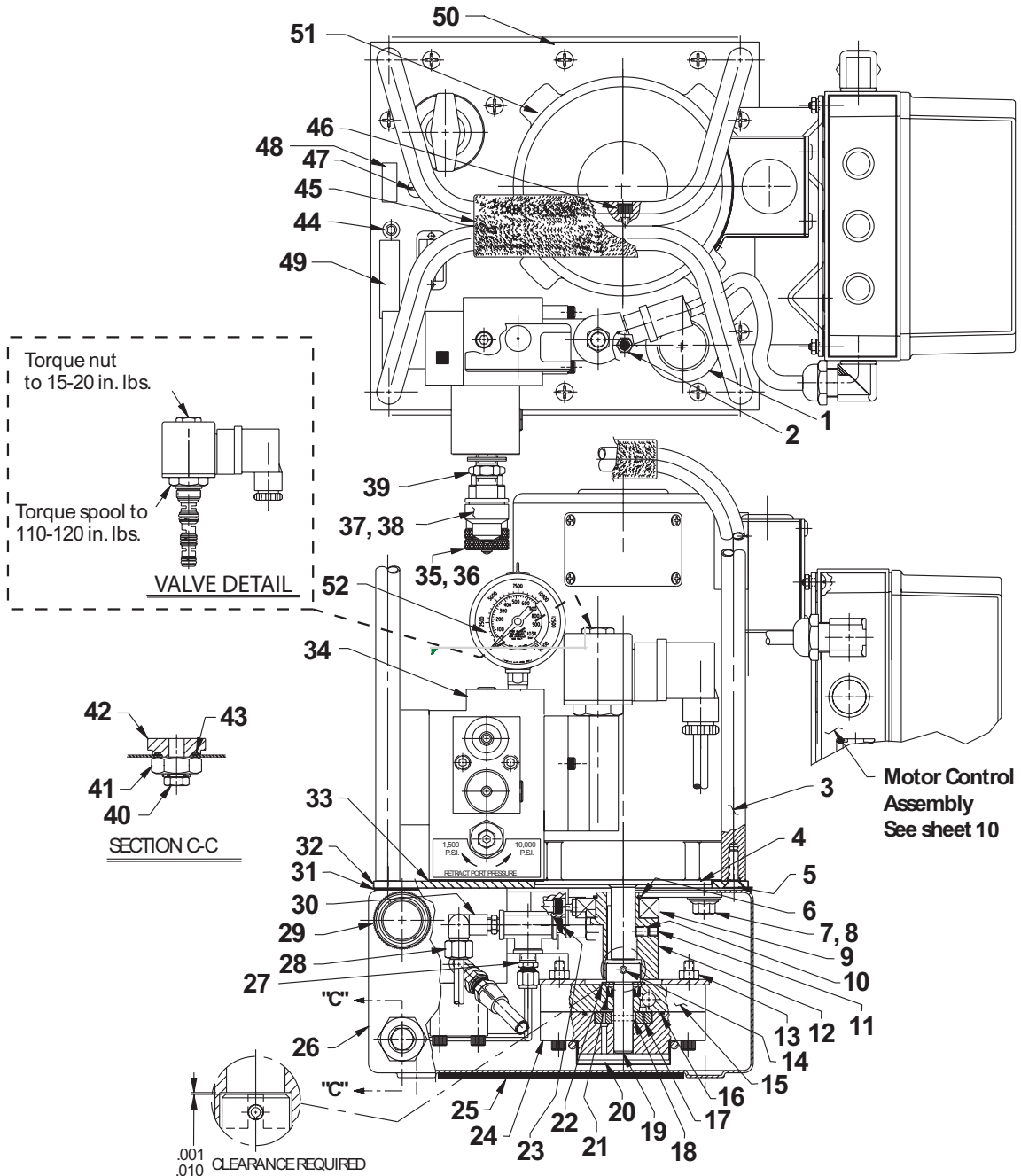




## MODEL C ELECTRIC HYDRAULIC PUMP Max. Capacity: 10,000 PSI



## Parts List

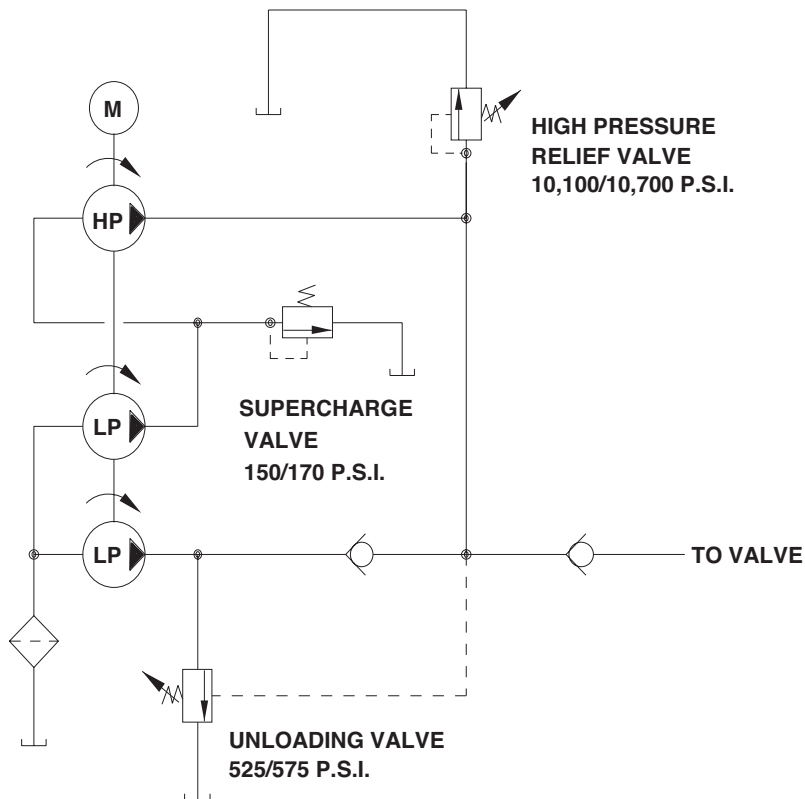
| ITEM | PART NO. | QTY | DESCRIPTION   |
|------|----------|-----|---|
| 1    | 350925   | 1   | Filler Cap  |
| 2    | 251599   | 1   | Breather Filter Vent  |
| 3    | 66408BK2 | 2   | Roll Cage Frame   |
| 4    | 351060   | 1   | Motor Base Gasket   |
| 5    | 11529    | 4   | Screw (1/4-20 UNC X 1" Lg.; Apply Loctite #242)             |
| 6    | 209798   | 1   | Retaining Ring  |
| 7    | 213663   | 4   | Cap Screw (3/8-16 UNC X 1" Lg.; Torque to 230/250 in. lbs.) |
| 8    | 10258    | 4   | Washer (For 3/8 bolt)                                       |
| 9    | 209805   | 1   | Ball Bearing  |
| 10   | 10519    | 1   | Set Screw (1/4-20 UNC X 3/8 Lg.; Torque to 60/80 in. lbs.)  |
| 11   | 10136    | 1   | Set Screw (1/4-20 UNC X 1/4 Lg.; Torque to 60/80 in. lbs.)  |
| 12   | 420840   | 1   | Eccentric   |
| 13   | 10199    | 2   | Hex Nut (1/4-20 UNC)  |
| 14   | 12298    | 1   | Roll Pin (3/16 dia. X 1-1/2" Lg.)                           |
| 15   | 65137    | 1   | Upper Gerotor Housing                                       |
| 16   | 10922    | 1   | O-ring (2-1/8" X 1-15/16 X 3/32)                            |
| 17   | 304826   | 1   | Gerotor   |
| 18   | 209794   | 1   | Gerotor Drive Pin   |
| 19   | 350940   | 1   | Gerotor Shaft   |
| 20   | 21846    | 1   | Filter Support  |
| 21   | 304830   | 1   | Oil Seal  |
| 22   | 12595    | 1   | Washer (1-1/8" X 1/2 X .077 Thk.)                           |
| 23   | 10022    | 4   | Screw (1/4-20 UNC X 1-1/2" Lg.; Torque to 180/200 in. lbs.) |
| 24   | 64580    | 1   | Lower Gerotor Housing                                       |
| 25   | 420948   | 1   | Rubber Pad (Apply 3M adhesive #08031 to reservoir and pad.) |
| 26   | 65126OR9 | 1   | Reservoir   |
| 27   | 14844    | 1   | Straight Fitting  |
| 28   | 15052    | 1   | 90° Elbow Fitting   |
| 29   | 17856    | 1   | Sight Gauge   |
| 30   | 18969    | 1   | Pipe Tee  |
| 31   | *58779   | 1   | Gasket  |
| 32   | 66039BK2 | 1   | Cover Plate   |
| 33   | 351095   | 1   | Valve Gasket  |
| 34   | 421293BK | 1   | Valve Assembly (See Form No. 1000489)                       |
| 35   | 251410   | 1   | Coupler   |
| 36   | 252364   | 1   | Dust Cap  |

Form No. 1000495

## Parts List continued

| ITEM | PART NO. | QTY | DESCRIPTION                    |
|------|----------|-----|--------------------------------|
| 37   | 251411   | 1   | Coupler                        |
| 38   | 252365   | 1   | Dust Cap                       |
| 39   | 10672    | 1   | Straight Fitting               |
| 40   | 17147    | 1   | Plug Fitting                   |
| 41   | 10396    | 1   | Jam Nut (3/4-16 UNF)           |
| 42   | 351000   | 1   | Drain                          |
| 43   | 14725    | 1   | O-ring (1-1/8" X 15/16 X 3/32) |
| 44   | 10177    | 12  | Screw (1/4-20 X 3/4 Lg.)       |
| 45   | 251600   | 1   | Handle Grip                    |
| 46   | 10008    | 2   | Cap Screw (1/4-20 X 5/8)       |
| 47   | 15911    | 3   | Screw (1/4-20 X 5/8)           |
| 48   | 203972   | 1   | Decal                          |
| 49   | 213695   | 1   | Decal                          |
| 50   | 309219CE | 2   | Decal                          |
| 51   | 351024   | 1   | Decal                          |
| 52   | 9040     | 1   | Gauge (10,000 psi 2-1/2" Dia.) |

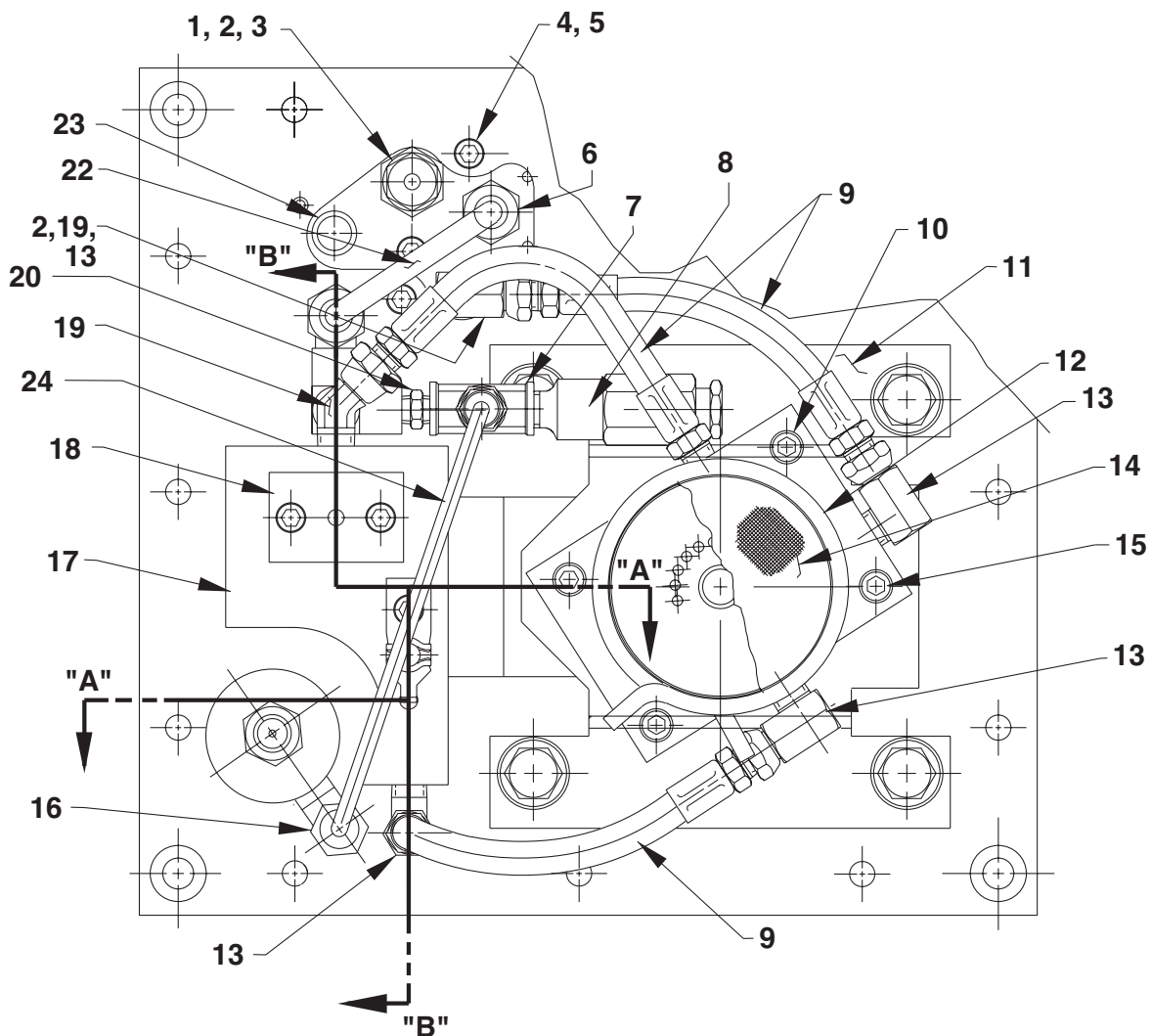
## HYDRAULIC SCHEMATIC



Part numbers marked with an asterisk (\*) are contained in Standard Repair Kit No. 300506.

# Parts List

## BOTTOM VIEW



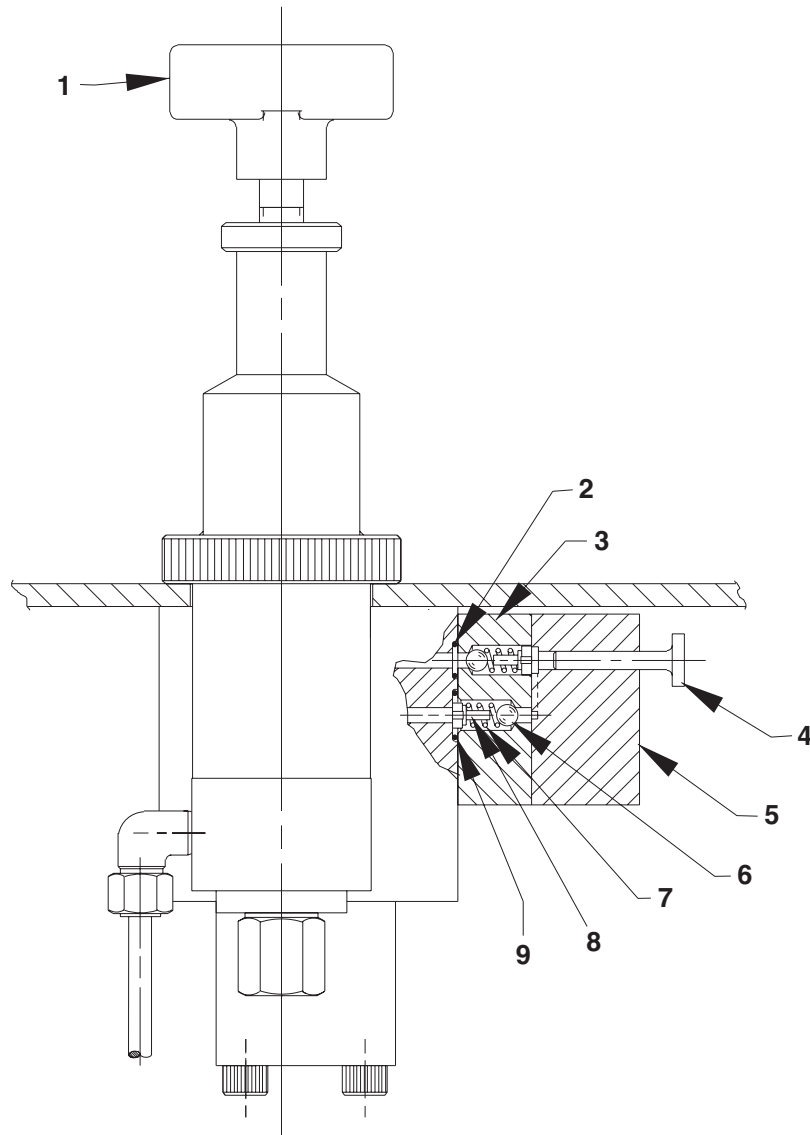
| ITEM | PART NO. | QTY | DESCRIPTION  |
|------|----------|-----|--|
| 1    | 251751   | 1   | Pipe Fitting   |
| 2    | 18841    | 2   | Fitting, Straight (1/8 NPTF)                             |
| 3    | 21278-15 | 1   | Relief Valve Assembly (Set at 1,500/1,700 PSI)           |
| 4    | 10008    | 3   | Cap Screw (1/4-20 UNC X 5/8 Lg.)                         |
| 5    | 10245    | 3   | Washer   |
| 6    | 205793   | 1   | Connector  |
| 7    | 215033   | 1   | Elbow Fitting  |
| 8    | 21278    | 1   | Relief Valve Assembly (Set at 10,100/10,700 PSI)         |
| 9    | 304819   | 3   | Hose Assembly  |
| 10   | 10022    | 2   | Screw 1/4-20 UNC X 1-1/2" Lg.; Torque to 60/80 in. lbs.) |
| 11   | 58481    | 1   | Gerotor Housing Bracket                                  |

Form No. 1000495

## Parts List continued

| ITEM | PART NO. | QTY | DESCRIPTION   |
|------|----------|-----|---|
| 12   | 11461    | 1   | Hose Clamp  |
| 13   | 14440    | 4   | 90° Elbow Fitting                                     |
| 14   | 21608    | 1   | Filter  |
| 15   | 10890    | 2   | Cap Screw (1/4-20 X 2" Lg.; Torque to 60/80 in. lbs.) |
| 16   | 16177    | 1   | 90° Elbow Fitting                                     |
| 17   | 65128    | 1   | Check Body  |
| 18   | 350930   | 1   | Retaining Block                                       |
| 19   | 251800   | 1   | Elbow Fitting   |
| 20   | 11421    | 2   | Pipe Nipple   |
| 21   | 18841    | 1   | Pipe Connector  |
| 22   | 252091   | 1   | Oil Line Tube   |
| 23   | 250630   | 1   | Drain Tube  |
| 24   | 252149   | 1   | Oil Line Tube   |

SECTION A-A

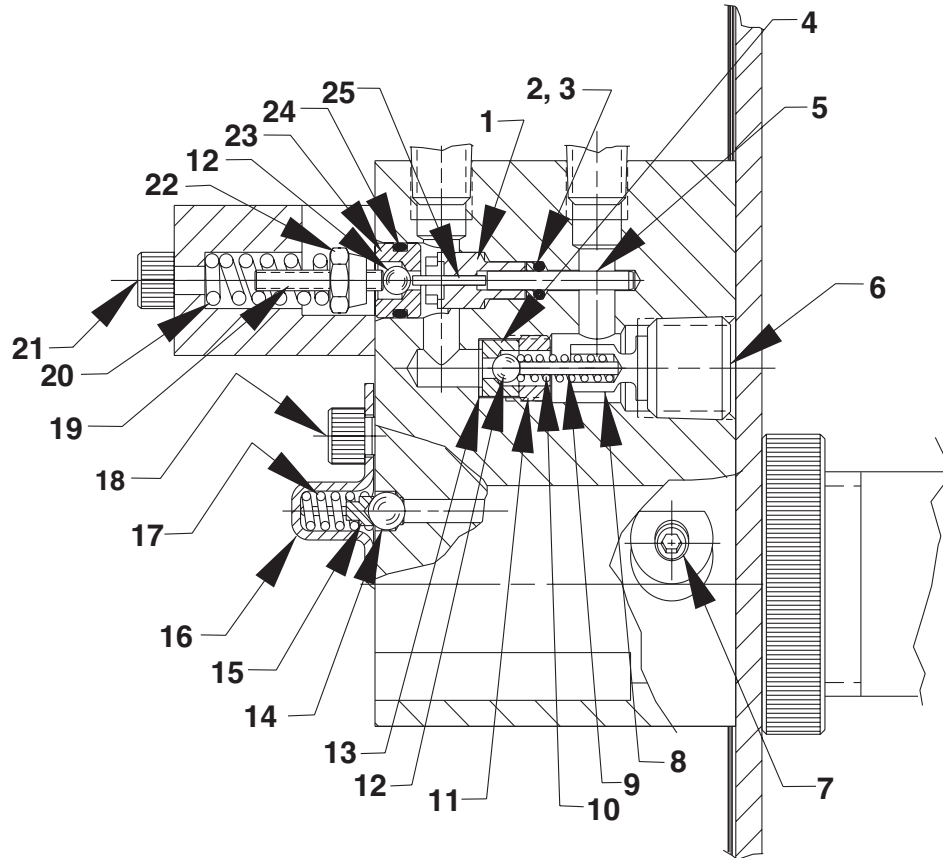


| ITEM | PART NO. | QTY | DESCRIPTION                                  |
|------|----------|-----|--|
| 1    | 420963   | 1   | External Relief Valve (See Form No. 1000046) |
| 2    | 10265    | 1   | O-ring (5/16 X 3/16 X 1/16)                  |
| 3    | 45559    | 1   | Block  |
| 4    | 305526   | 1   | High Pressure Piston                         |
| 5    | 45866    | 1   | Block  |
| 6    | 12223    | 2   | Ball (3/16 Dia.)                             |
| 7    | 10445    | 2   | Compression Spring (5/32 O.D. X 3/4 Lg.)     |
| 8    | 24549    | 2   | Ball Guide                                   |
| 9    | 14763    | 1   | O-ring (7/16 X 5/16 X 1/16)                  |

Form No. 1000495

# Parts List

## SECTION B-B



| ITEM | PART NO. | QTY | DESCRIPTION   |
|------|----------|-----|---|
| 1    | 251068   | 1   | Guide   |
| 2    | 17797    | 1   | O-ring (1/4 X 1/8 X 1/16)                                   |
| 3    | 214992   | 1   | Backup Ring   |
| 4    | 209787   | 1   | Replaceable Seat  |
| 5    | 16471    | 1   | Pin (Taper on pin should be away from guide [item #1].)     |
| 6    | 14972    | 1   | Pipe Plug (1/4 NPTF)  |
| 7    | 15130    | 1   | Plug (1/16 NPTF)  |
| 8    | 202681   | 1   | Ball Stop   |
| 9    | 10895    | 1   | Roll Pin (.13 X .75)  |
| 10   | 250227   | 1   | Compression Spring (3/16 O.D. X 3/8 Lg.)                    |
| 11   | 209797   | 1   | Hollow Lock Screw (7/16 UNF-3A; Torque to 110/130 in. lbs.) |
| 12   | 12223    | 2   | Ball (3/16 Dia.)  |
| 13   | 10442    | 1   | Washer (3/8 X 1/4 X 1/32)                                   |
| 14   | 10374    | 1   | Steel Ball (7/32 Dia.)                                      |
| 15   | 200796   | 1   | Ball & Spring Adapter                                       |
| 16   | 350577   | 1   | Spring Retainer   |

Form No. 1000495

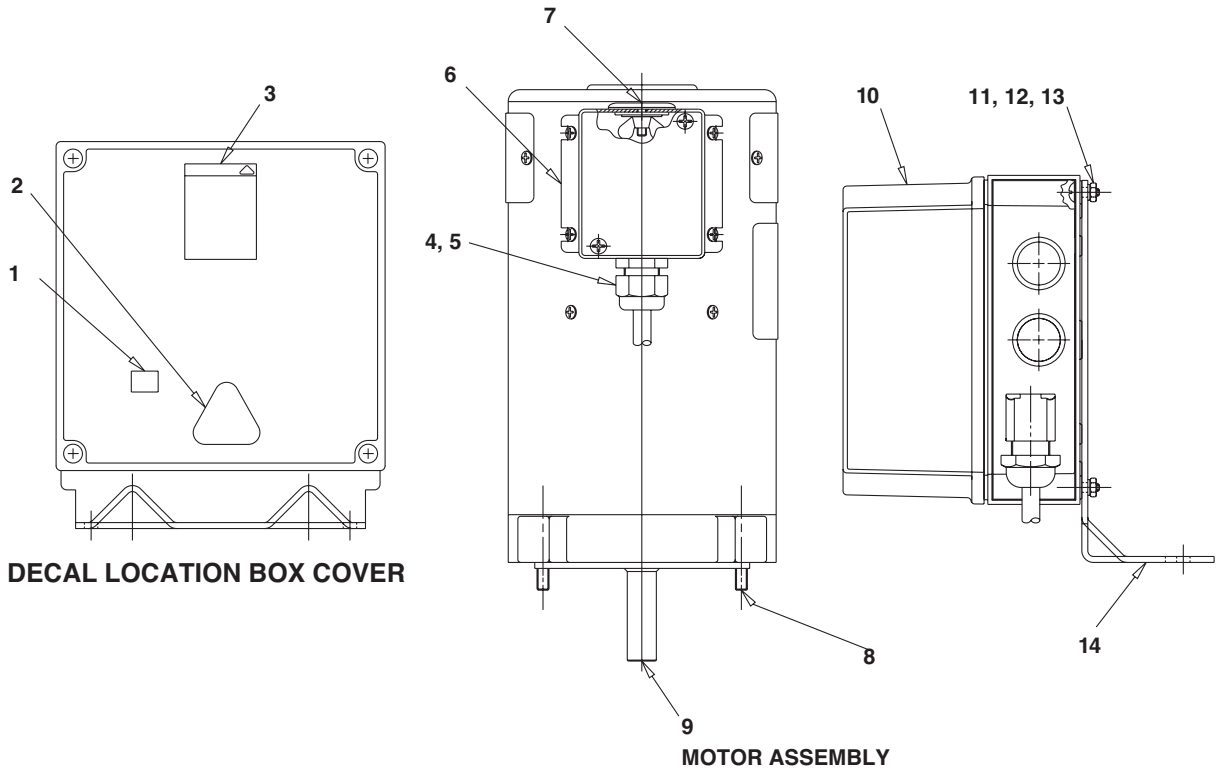
## Parts List continued

| ITEM | PART NO. | QTY | DESCRIPTION   |
|------|----------|-----|---|
| 17   | 15691    | 1   | Compression Spring (1/4 O.D. X 5/8 Lg.)                       |
| 18   | 10002    | 1   | Cap Screw (1/4-20 UNC X 3/8 Lg.; Torque 60/80 in. lbs.)       |
| 19   | 251067   | 1   | Set Screw (Unloading valve; #10-24 UNC X 1" Lg.)              |
| 20   | 14484    | 1   | Compression Spring (3/8 O.D. X 1" Lg.)                        |
| 21   | 10854    | 2   | Cap Screw (1/4-20 UNC X 1-3/4" Lg.; Torque to 60/80 in. lbs.) |
| 22   | 207405   | 1   | Locknut   |
| 23   | 251065   | 1   | Replaceable Seat  |
| 24   | 10268    | 1   | O-ring (1/2 X 3/8 X 1/16)                                     |
| 25   | 251611   | 1   | Dowel Pin   |



# Parts List

## MOTOR AND CONTROL BOX



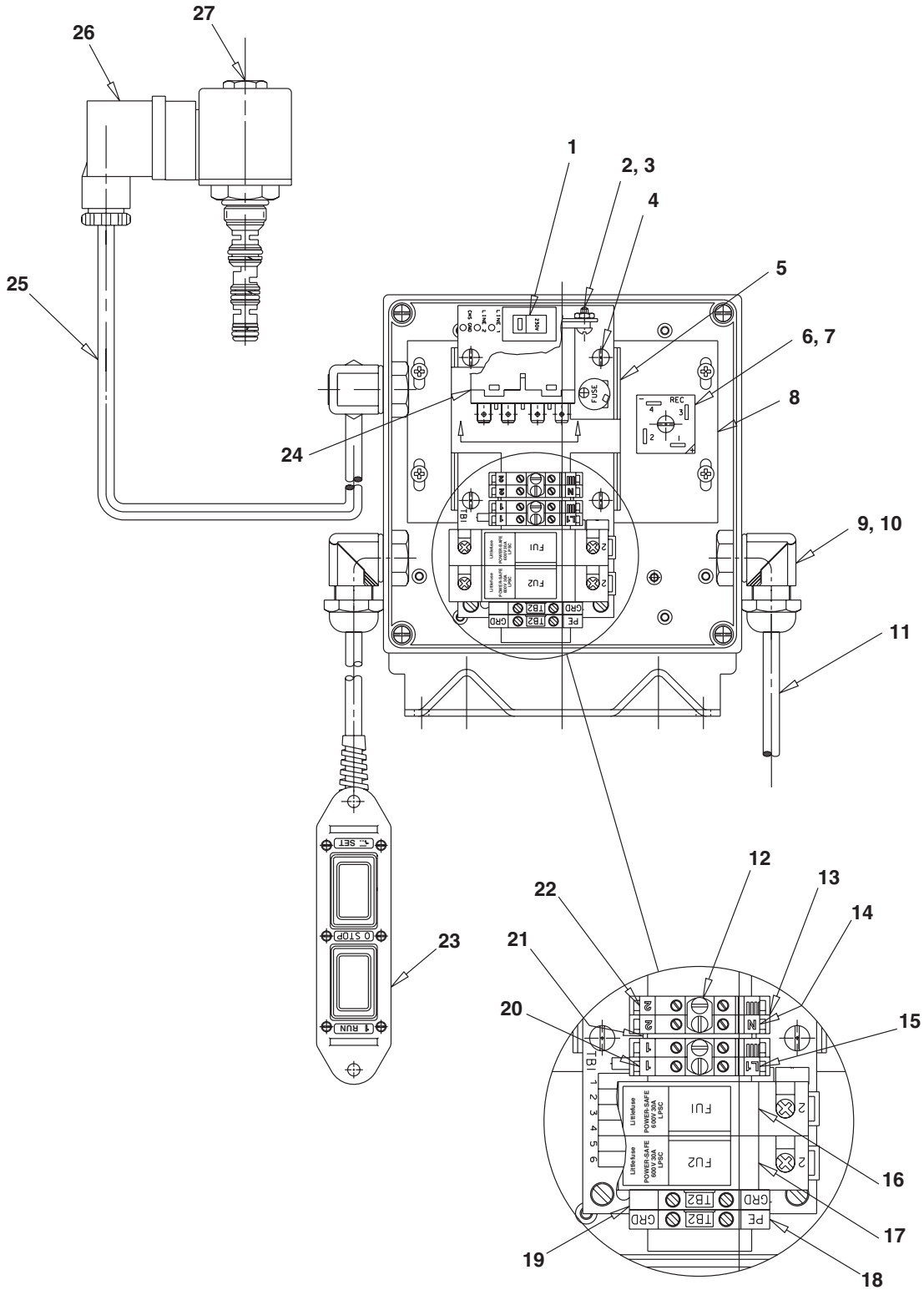
| ITEM | PART NO.   | QTY | DESCRIPTION                          |
|------|------------|-----|--------------------------------------|
| 1    | 350988     | 1   | Decal, CE                            |
| 2    | 251898     | 1   | Decal, Warning CE Elec               |
| 3    | 251762     | 1   | Decal, Warning                       |
| 4    | 216680     | 4   | Locknut, Conduit                     |
| 5    | 216666     | 4   | Bushing, Strain Relief, Straight     |
| 6    | 351269     | 1   | Screw (10-24 X 1/2 Lg.)              |
| 7    | 216669     | 1   | Plug, Hole                           |
| 8    | 10022      | 4   | Screw, Cap (1/4-20 X 1.5 Socket Hd.) |
| 9    | *2002296   | 1   | Motor, Elec (230V, 60Hz)             |
|      | *2001924   | 1   | Motor, Elec (115V, 60Hz)             |
| 10   | 2000272    | 1   | Box, Control                         |
| 11   | 260071     | 4   | Screw, Round Hd. (8-32 X 3/4)        |
| 12   | 10241      | 4   | Washer                               |
| 13   | 10196      | 4   | Nut, Hex (8-32)                      |
| 14   | 2000271BK1 | 1   | Bracket, Mounting                    |

Part numbers marked with an asterisk (\*) are contained in Standard Repair Kit No. 300506.

For replacement brushes, order Kit 3001097. It contains (2) 2010169 brushes.

Form No. 1000495

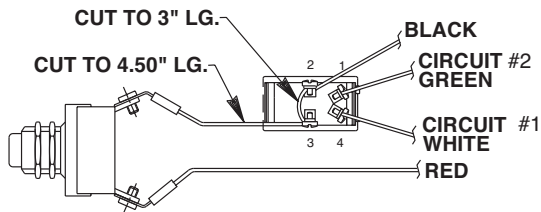
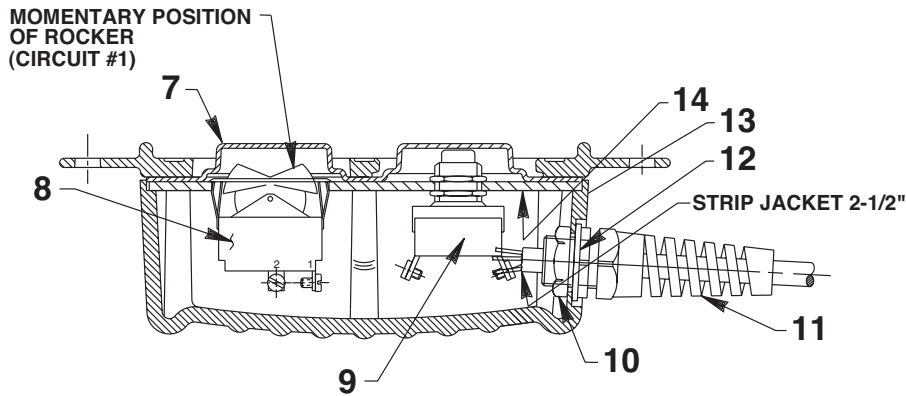
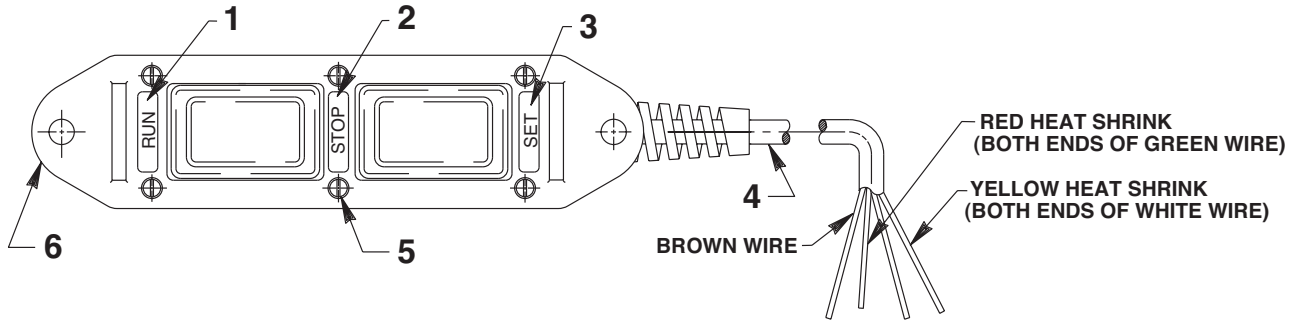
MOTOR CONTROL ASSEMBLY



## Parts List

| ITEM | PART NO.  | QTY    | DESCRIPTION                       |
|------|-----------|--------|-----------------------------------|
| 1    | 421477    | 1      | Board, Circuit                    |
| 2    | 10447     | 2      | Screw, Round Hd. (8-32 X 5/16)    |
| 3    | 10196     | 2      | Nut, Hex (8-32)                   |
| 4    | 260071    | 4      | Screw, Round Hd. (8-32 X 3/4)     |
| 5    | 421608WH2 | 1      | Bracket, Mounting                 |
| 6    | 251050    | 1      | Rectifier                         |
| 7    | 10429     | 1      | Screw, Round Hd. (8-32 X 1/2)     |
| 8    | 2000279   | 4      | Plate, Mounting                   |
| 9    | 260068    | 3      | Bushing, Strain, Relief 90 Degree |
| 10   | 216680    | 3      | Locknut, Conduit                  |
| 11   | 251879    | 10.08' | Cable, 1.5 MM/3 HAR               |
| 12   | 251845    | 2      | Jumper, Center 2 Pole             |
| 13   | 251840    | 4      | Block, Terminal                   |
| 14   | 2000160   | 1      | Card, Marker N                    |
| 15   | 2000159   | 1      | Card, Marker L1                   |
| 16   | 253112    | 2      | Fuse, 15 AMP 600V                 |
| 17   | 351668    | 1      | Holder, Fuse                      |
| 18   | 2000161   | 1      | Card, Marker PE                   |
| 19   | 251841    | 2      | Block, Grounding Terminal         |
| 20   | 2000162   | 2      | Card, Marker 1                    |
| 21   | 251842    | 1      | Barrier, End                      |
| 22   | 2000163   | 2      | Card, Marker 2                    |
| 23   | 351160    | 1      | Control, Hand                     |
| 24   | 421663    | 1      | Relay, 240 Volt                   |
| 25   | 253592    | 1.42'  | Cable, .75MM/3 HAR                |
| 26   | 253405    | 1      | Connector                         |
| 27   | 351843    | 1      | Valve, Solenoid (4-Way 3,000 psi) |

## REMOTE HAND SWITCH ASSEMBLY



**ROCKER SWITCH FUNCTION:**  
 OFF  
 ON (CIRCUIT #1)  
 ON (MOM) (CIRCUIT #1 & #2)

## Parts List

| ITEM | PART NO. | QTY | DESCRIPTION            |
|------|----------|-----|------------------------|
| 1    | 253105   | 1   | Decal (Run)            |
| 2    | 253106   | 1   | Decal (Stop)           |
| 3    | 253107   | 1   | Decal (Set)            |
| 4    | 11391    | 21' | Cable (18/4 SJTO)      |
| 5    | 250248   | 6   | Screw (4-24 X 3/4 Lg.) |
| 6    | 251044   | 1   | Plastic Cover          |
| 7    | 420050-2 | 1   | Gasket                 |
| 8    | 420017   | 1   | Rocker Switch          |
| 9    | 253197   | 1   | Push Button Switch     |
| 10   | 251802   | 1   | Locknut                |
| 11   | 251818   | 1   | Strain Relief Bushing  |
| 12   | 253607   | 1   | Gasket                 |
| 13   | 420050-4 | 1   | Switch Housing         |
| 14   | 420050-5 | 1   | Switch Mounting Plate  |

**RECOMMENDED MINIMUM WIRE SIZE-AWG (mm<sup>2</sup>)  
OF EXTENSION CORDS FOR  
POWER TEAM ELECTRIC PUMPS**

| Current<br>At Full Load<br>(Amps) | Cord Size AWG (mm <sup>2</sup> ) 3.2 Volt Drop |                        |                          |                           |
|-----------------------------------|--|------------------------|--------------------------|---------------------------|
|                                   | Length of Cord                                 |                        |                          |                           |
|                                   | 0-25 feet<br>(0-8 m)                           | 25-50 feet<br>(8-15 m) | 50-100 feet<br>(15-30 m) | 100-150 feet<br>(30-45 m) |
| 6                                 | 18 (.82)                                       | 16 (1.33)              | 14 (2.09)                | 12 (3.32)                 |
| 8                                 | 18 (.82)                                       | 16 (1.33)              | 12 (3.32)                | 10 (5.37)                 |
| 10                                | 18 (.82)                                       | 14 (2.09)              | 12 (3.32)                | 10 (5.37)                 |
| 12                                | 16 (1.33)                                      | 14 (2.09)              | 10 (5.37)                | 8 (8.37)                  |
| 14                                | 16 (1.33)                                      | 12 (3.32)              | 10 (5.37)                | 8 (8.37)                  |
| 16                                | 16 (1.33)                                      | 12 (3.32)              | 10 (5.37)                | 8 (8.37)                  |
| 18                                | 14 (2.09)                                      | 12 (3.32)              | 8 (8.37)                 | 8. (8.37)                 |
| 20                                | 14 (2.09)                                      | 12 (3.32)              | 8 (8.37)                 | 6 (13.30)                 |
| 22                                | 14 (2.09)                                      | 10 (5.37)              | 8 (8.37)                 | 6 (13.30)                 |
| 24                                | 14 (2.09)                                      | 10 (5.37)              | 8 (8.37)                 | 6 (13.30)                 |
| 26                                | 12 (3.32)                                      | 10 (5.37)              | 8 (8.37)                 | 6 (13.30)                 |
| 28                                | 12 (3.32)                                      | 10 (5.37)              | 6 (13.30)                | 4 (21.29)                 |
| 30                                | 12 (3.32)                                      | 10 (5.37)              | 6 (13.30)                | 4 (21.29)                 |