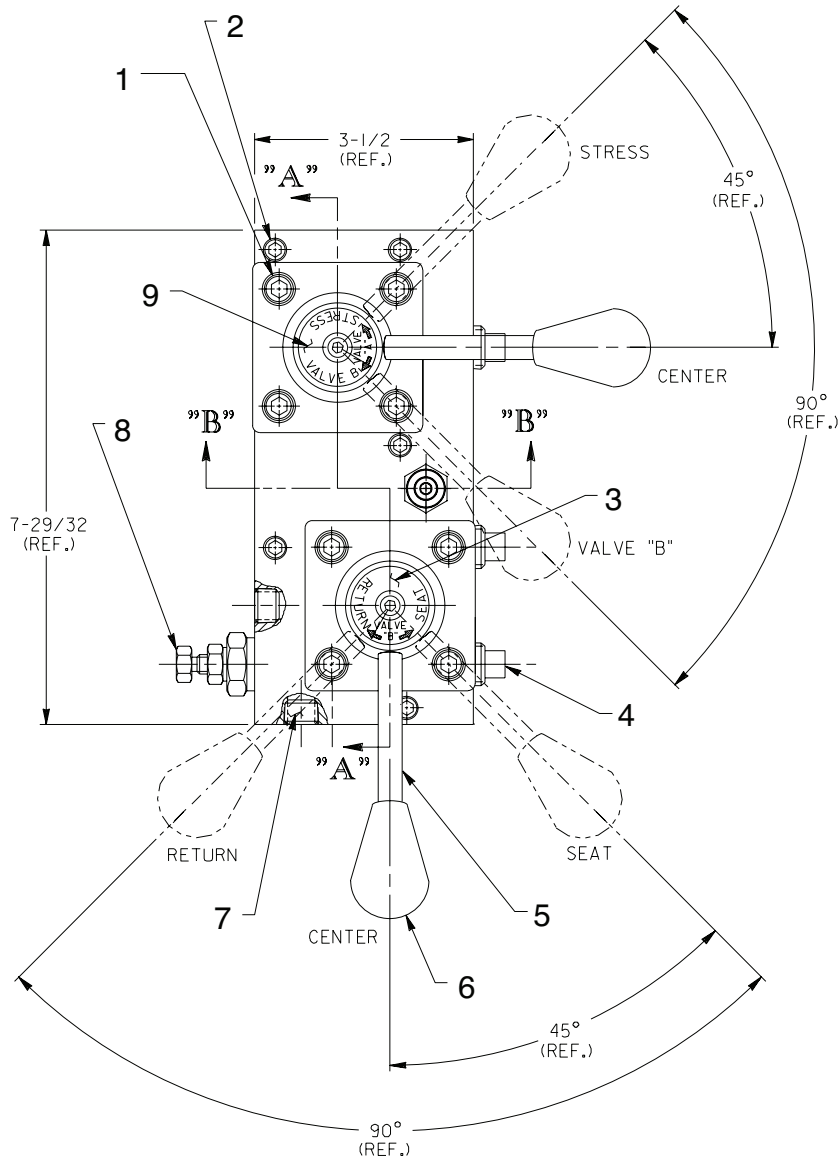


SPX Hydraulic Technologies  
5885 11th Street  
Rockford, IL 61109-3699 USA  
**powerteam.com**

Tech Services: +1 800 477 8326  
Fax: +1 800 765 8326  
Order Entry: +1 800 541 1418  
Fax: +1 800 288 7031

9632

**MODEL B  
VALVE ASSEMBLY  
SIX POSITION, 5-WAY MANUAL DUAL**



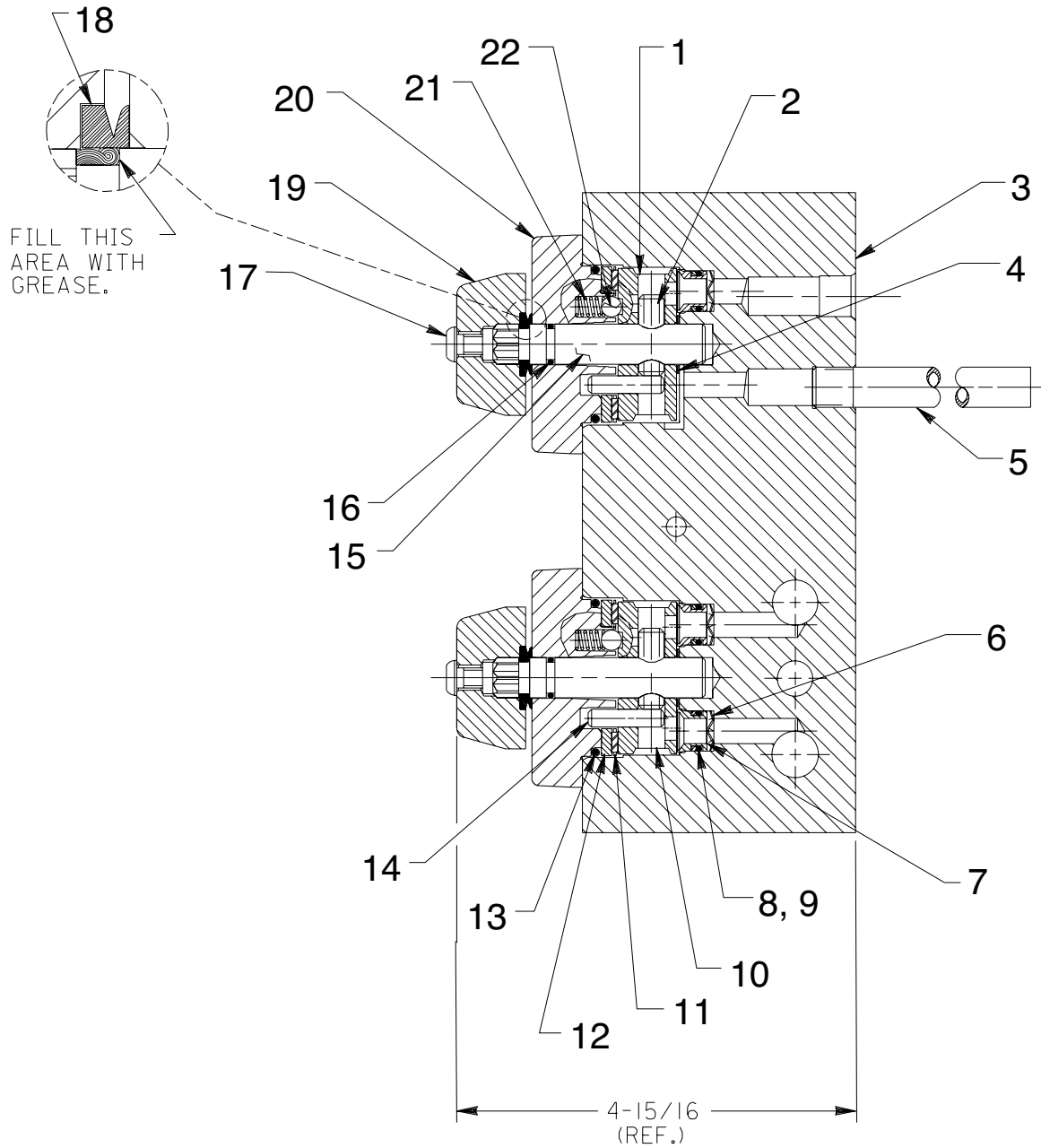
Item No.	Part No.	No. Req'd	Description
----------	----------	-----------	-------------

1	11013	8	Soc. Hd. Cap Screw (5/16-18 x 1" Lg.; Torque to 300/320 in. lbs.)
2	17428	5	Soc. Hd. Cap Screw (1/4-20 x 3-1/2 Lg; Note: when using this valve on a PE30 Series pump order (4) 216234 Screws for mounting valve to pump.)

Item No.	Part No.	No. Req'd	Description
----------	----------	-----------	-------------

3	214252	1	Decal
4	11127	3	Pipe Plug (3/8 NPTF)
5	21639	2	Handle Stud
6	211911	2	Plastic Knob
7	14972	5	Pipe Plug (1/4 NPTF)
8	214250	1	Cartridge Relief Valve
9	214251	1	Decal

## SECTION A-A

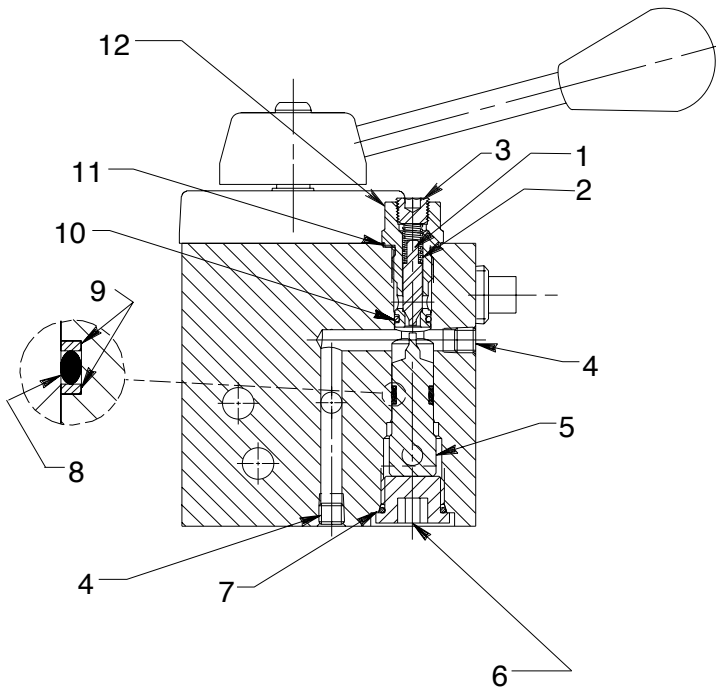


Item No.	Part No.	No. Req'd	Description
1	306032	1	Rotor
2	10496	2	Slotted Spring Pin (5/16 x 1" Lg.)
3	2001414	1	Valve Body
4	214801	2	Spacer Washer
5	200609	1	Drain Tube
6	21975	6	Spring Washer
7	202480	6	Shear Seal
8	*10268	6	O-ring (1/2 x 3/8 x 1/16, -012)
9	*11863	6	Backup Washer (-012)
10	46060	1	Rotor
11	11228	2	Roller Thrust Bearing
12	11227-1	2	Thrust Bearing Washer

Item No.	Part No.	No. Req'd	Description
13	*15892	2	O-ring (1.956 x 1.720 x .118, -924)
14	250056	2	Slotted Spring Pin (7/32 dia.)
15	46048	2	Stem
16	*13943	2	O-ring (1/2 x 3/8 x 1/16, -012)
17	15911	2	Hex. Soc. But. Hd. Cap Screw (1/4-20 x 5/8 Lg.; Torque to 60/80 in. lbs. NOTE: Apply Loctite No. 222 or equivalent at assembly)
18	*213674	2	V-ring
19	46057	2	Stem End
20	61343	2	End Cap
21	15095	2	Compression Spring
22	10375	2	Metallic Ball (1/4 dia.)

Part numbers marked with an asterisk (\*) are contained in Repair Kit No. 300571.

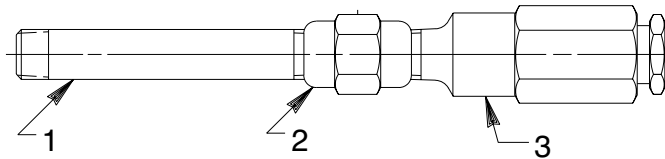
## SECTION B-B



Item No.	Part No.	No. Req'd	Description
1	2008603	1	Poppet
2	11024	1	Compression Spring
3	10427	4	Plug, 1/8 NPTF
4	15130	7	Pipe Plug (level-seal 1/16 NPTF)
5	250333	1	Piston
6	214014	1	Hex. Drive O-ring Boss Plug (Note: Discard rubber o-ring)
7	*215193	1	O-ring (13/16 x 5/8 x 1/16, -114; Replaces o-ring on Item #7)
8	*10268	1	O-ring (1/2 x 3/8 x 1/16, -012)
9	*11863	2	Backup Washer (-012)
10	*14763	1	O-ring (7/16 x 5/16 x 1/16, -011)
11	14874	1	Copper Washer
12	2008604	1	Valve cartridge (Torque to 250/280 in. lbs.)

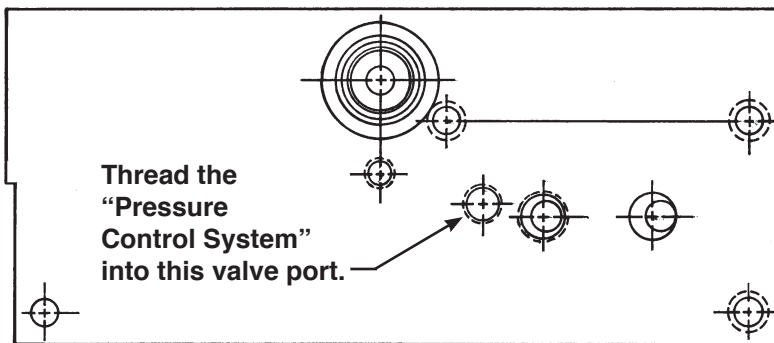
Parts numbers marked with an asterisk (\*) are contained in Repair Kit No. 300571.

### “B” PORT PRESSURE CONTROL SYSTEM



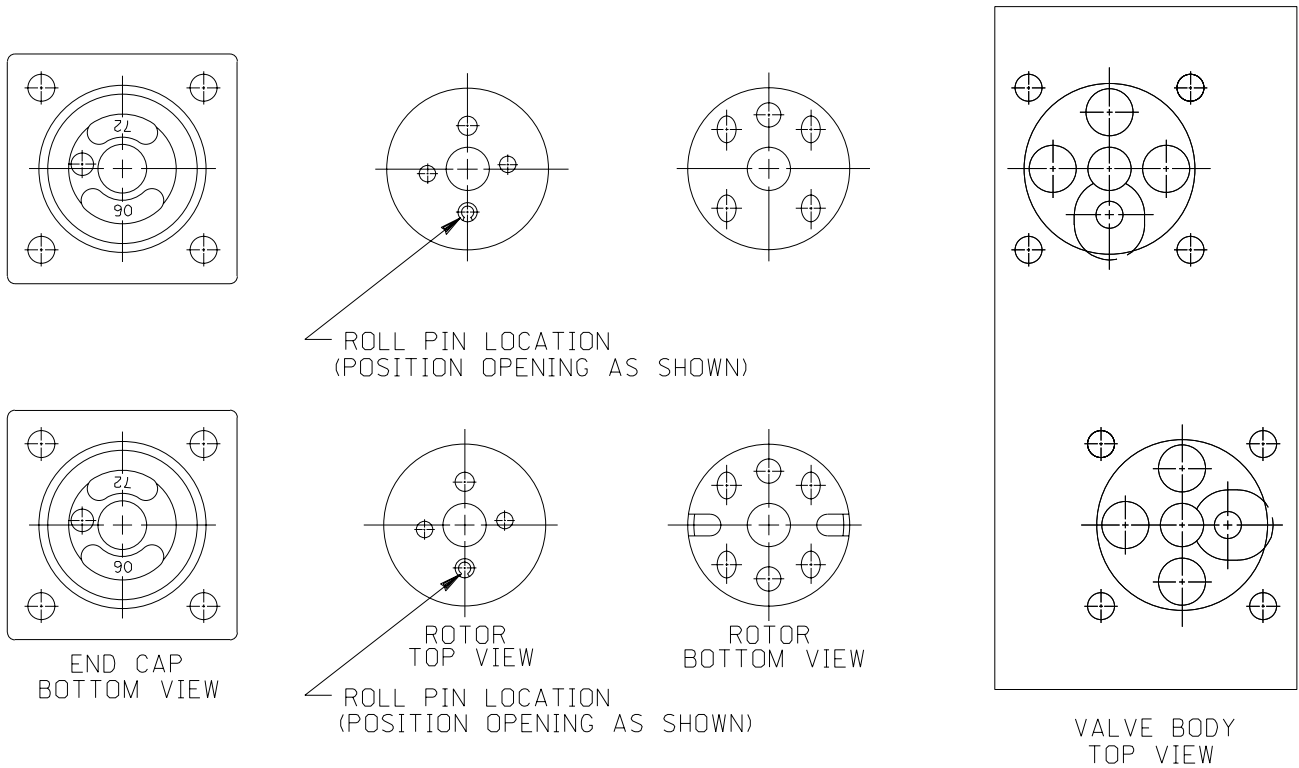
Item No.	Part No.	No. Req'd	Description
1	12891-1	1	Pipe Nipple
2	18841	1	Straight Fitting
3	21278-20	1	Relief Valve (Set at 1900/2200 PSI)

### LOCATION OF “B” PORT PRESSURE CONTROL SYSTEM



### BOTTOM VIEW OF VALVE

# INTERNAL ASSEMBLY ORIENTATION OF PARTS



## SPECIFICATIONS

### Valve Description

Pump-mounted, six-position, detented 5-way manual dual valve with "return" port pressure control and "stressing" port release system. (14.1 to 1 ratio)

### Rated Pressure:

Valve "A" = 10,000 PSI

Valve "B" = 6,000 PSI

Case Pressure: = 500 PSI Max.

Rated Flow: = 5 GPM

### Valve Function

VALVE "A" (Valve "B" must be in the center position)

Stress position: Pressure to "stress" port, valve "B"

open to tank.

Center position: Pressure directed to tank, all other

ports blocked.

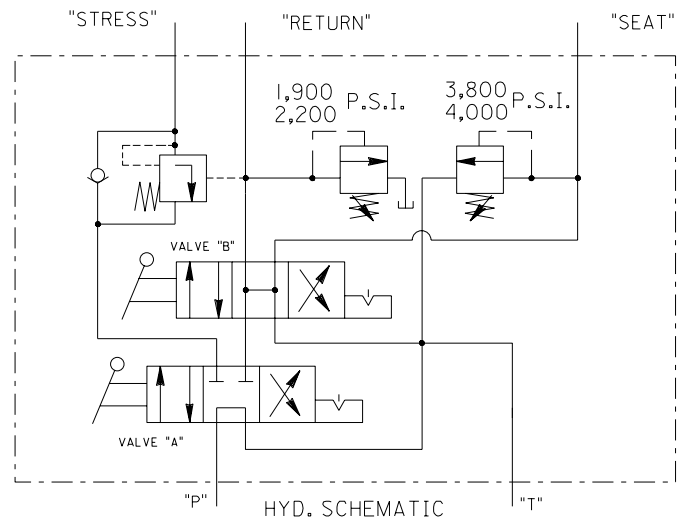
Valve "B" position: Pressure to valve "B," pressure in the "stress" port blocked or checked.

VALVE "B" (Valve "A" must be in valve "B" position)

Seat position: Pressure to regulated "seat" port, regulated "return" port open to tank.

Center position: All ports to tank.

Return position: Pressure to regulated "return" port, (controlled to 6,000 PSI max.) "stress" port to hold until pressure ratio is obtained and then release to tank. The "stressing" port will remain open as long as the "return" port maintains the required pressure ratio. Regulated "seat" port to tank.



NOTE: Pressure ratio is the pressure differential between the "stress" and "return" ports.

Max. regulator setting = 6,000 PSI