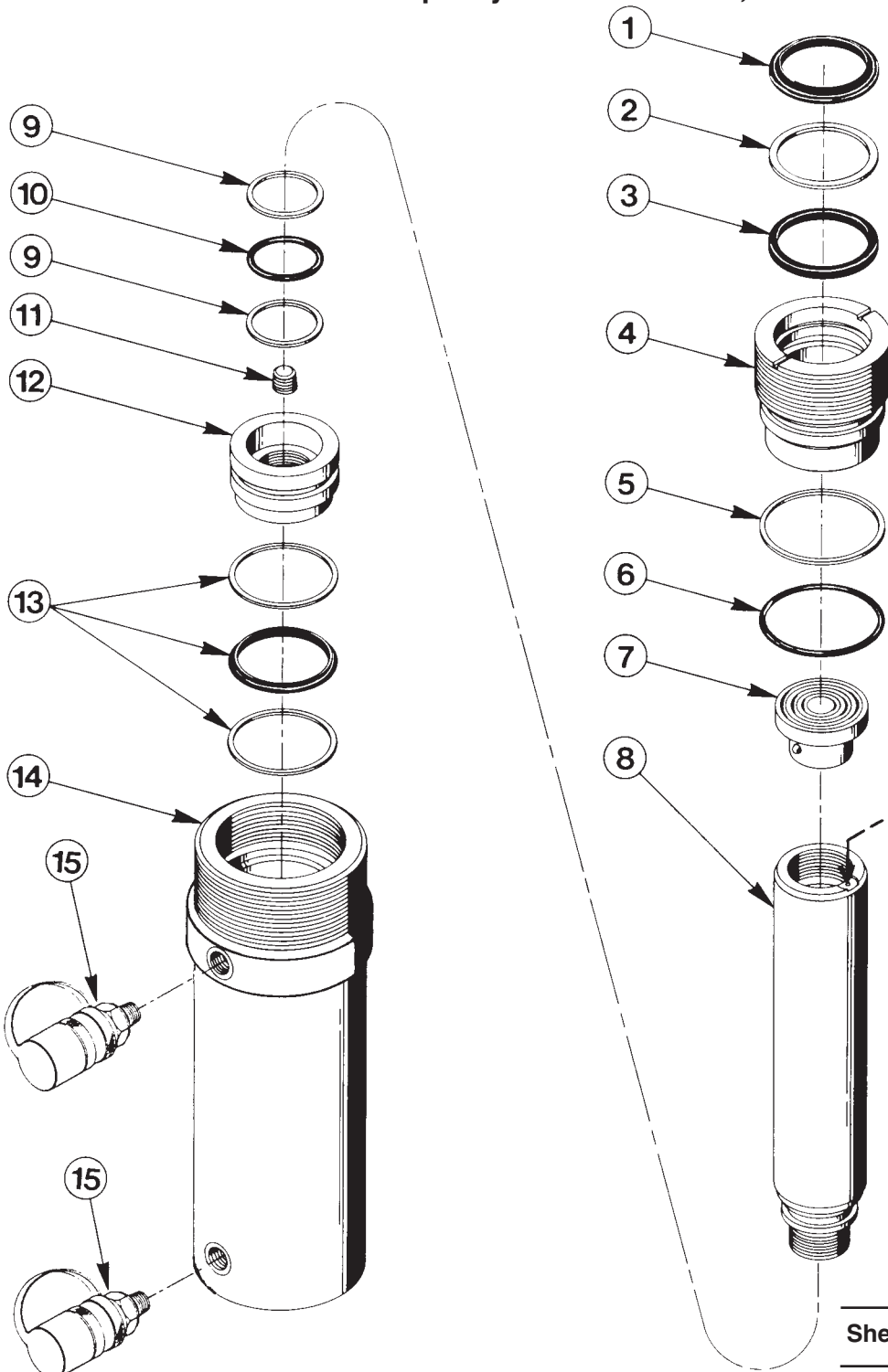


Parts List for:

7RD1010  
RD1010  
RD1010-PFAFF


**DOUBLE-ACTING  
HYDRAULIC CYLINDER**  
Max. Capacity: 11.2 Tons at 10,000 PSI



**Double-acting  
Cylinder  
Relief Valve**

See important  
**⚠ DANGER**  
statement  
on back of  
sheet 1 of 1

Note: Shaded areas  
reflect last revision(s)  
made to this form.

-  **DANGER:** To help avoid possible serious personal injury or death,
- In the event that the cylinder retract port is ever restricted or plugged, a double-acting cylinder relief valve will help prevent excessive pressure from building in the cylinder. **DO NOT** attempt to adjust or service this relief valve! If oil leakage is detected from this relief valve, discontinue use of the cylinder immediately and contact **Power Team Technical Services**. Only Power Team Authorized Hydraulic Service Centers should service this relief valve.

Item No.	Part No.	No. Req'd	Description
1	*19578	1	Rod Wiper
2	*19583	1	Backup Washer (1-9/16 X 1-5/16 X .048)
3	*19577	1	U-cup
4	43393	1	Retainer Nut (Torque to 100 ft. lbs.)
5	*19136	1	Backup Washer (1-5/16 X 1-3/4 X .048)
6	*10535	1	O-ring (1-5/16 X 1-3/4 X .093)
7	201362	1	Thread Adapter Assembly
8	51391	1	Piston Rod
9	*19131	2	Backup Washer (1" X 13/16 X .048)
10	*10658	1	O-ring (1" X 13/16 X 3/32)
11	14972	1	Pipe Plug (1/4 PTF)
12	43392	1	Piston Head (Torque to 200 ft. lbs.)
13	*19757	1	T-Seal & Backup Rings (Smooth side of Backup Ring must be against seal)
14	51390	1	Cylinder Body
15	9796	2	Quick Coupler (For RD1010 & RD1010-PFAFF)
	210916	2	Quick Coupler (For 7RD1010)

**PARTS INCLUDED BUT NOT SHOWN**

*203908	1	Warning Decal
420893	1	Full Coverage Decal (For RD1010)
210850	1	Trade Name Decal (For 7RD1010)
306249	1	Thread Protector (For RD1010 & RD1010-PFAFF)
203908-CE	1	Warning Decal (For RD1010-PFAFF)
252183	1	Trade Name Decal (For RD1010-PFAFF)

Part numbers marked with an (\*) asterisk are contained in Repair Kit No. 300017.

Refer to any operating instructions included with this product for detailed information about operation, testing, disassembly, reassembly, and preventive maintenance.

Items found in this parts list have been carefully tested and selected. **Therefore: Use only genuine Power Team replacement parts!**

Additional questions can be directed to our Technical Services Department.