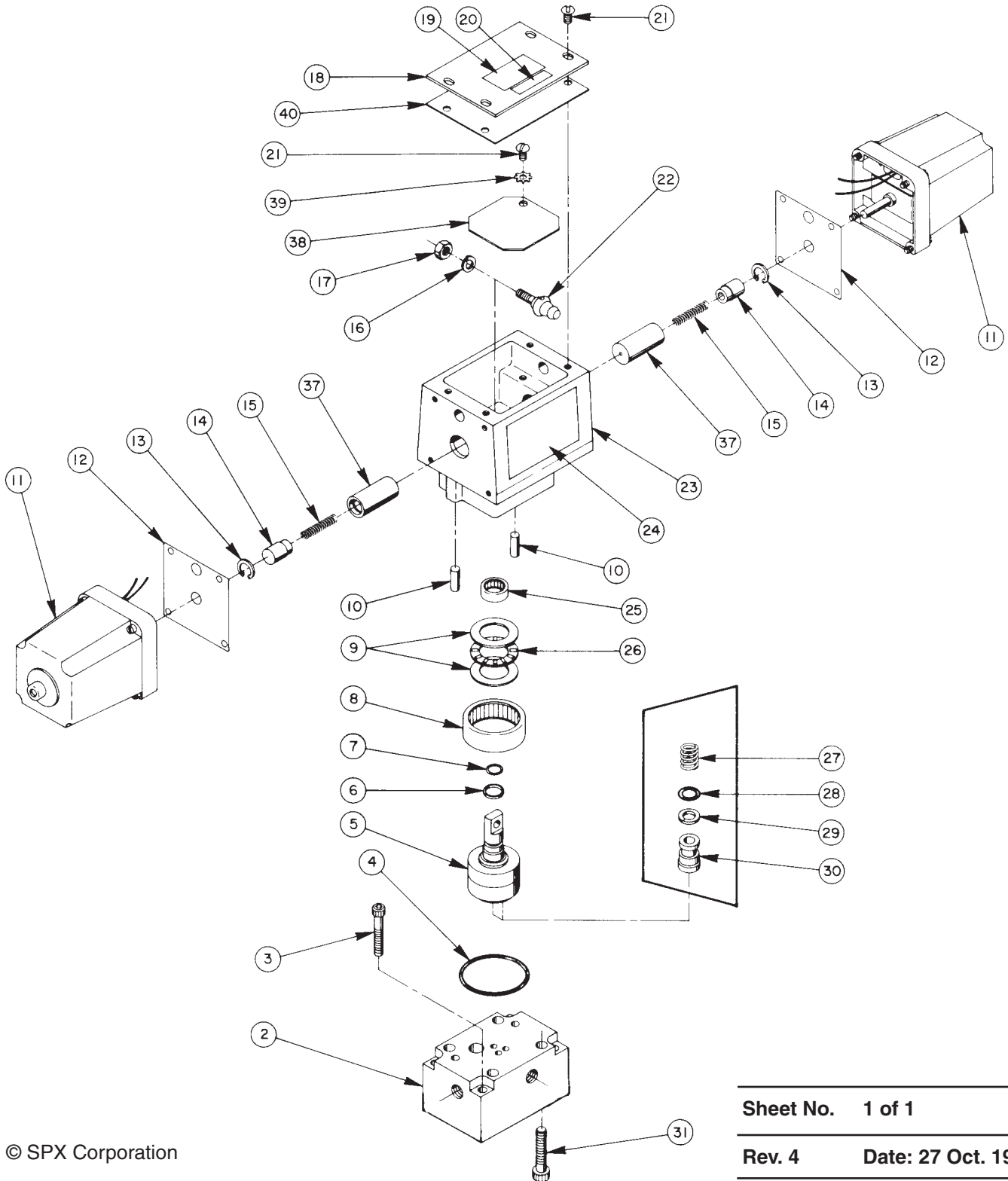


TWO POSITION, 4-WAY REMOTE MOUNTED, SOLENOID OPERATED VALVE ASSEMBLY



Parts List, Form No. 100541, Back sheet 1 of 1

Item No.	Part No.	No. Req'd	Description
2	61080	1	Subplate (Prior to 10-1-90)
	64092	1	Subplate (After 10-1-90)
3	10022	4	Soc. Hd. Cap Screw (1/4-20 x 1-1/2 Lg.)
4	*214699	1	O-ring (2-3/16 x 2" x 3/32)
5	52064	1	Rotor
6	*208672	1	Glyd Ring
7	*10268	1	O-ring (1/2 x 3/8 x 1/16)
8	17505	1	Needle Thrust Bearing
9	15935	2	Thrust Washer
10	17567	2	Spring Pin
11	304068	2	Solenoid (115 V., 60 Hz)
	304069	2	Solenoid (230 V., 50/60 Hz.)
	304070	2	Solenoid (24 V., 50/60 Hz.)
12	303980	2	Stop Plate
13	11522	2	Retaining Ring
14	208590	2	Spring Guide
15	13960	2	Compression Spring (1/4 O.D. x 1-1/2 Lg.)
16	10245	1	Lockwasher
17	15504	1	Locknut (1/4-28)
18	303976	1	Cover
19	421846	1	Warning Decal
20	209383	1	Patent Decal
21	10164	5	Machine Screw (#10-24 x 3/8 Lg.)
22	304030	1	Lever
23	61077	1	Valve Body
24	208714	1	Part No. Decal (for 9593)
	252264	1	Part No. Decal (for 9524)
	252265	1	Part No. Decal (for 9554)
25	208671	1	Needle Roller Bearing
26	12188	1	Roller Bearing
27	15095	2	Compression Spring (1/4 O.D. x 15/32 Lg.)
28	*10265	2	O-ring (5/16 x 3/16 x 1/16)
29	*15174	2	Backup Washer (5/16 x 3/16 x 3/64)
30	303935	2	Shear Seal
31	10948	4	Soc. Hd. Cap Screw (5/16-18 x 1-1/2 Lg.; Torque to 300/400 in. lbs. [Prior to 10-1-90])
	18328	4	Soc. Hd. Cap Screw (5/16-18 x 2" Lg.; Torque to 150/200 in. lbs. [After 10-1-90])
37	303968	2	Actuator Plunger
38	303977	1	Inner Cover
39	11108	1	Lockwasher
40	303986	1	Cover Gasket

PARTS INCLUDED BUT NOT SHOWN

9689	2	Straight Fitting
16797	2	90° Elbow Fitting

Part numbers marked with an asterisk (*) are contained in Repair Kit No. 300332.

Refer to any operating instructions included with this product for detailed information about operation, testing, disassembly, reassembly, and preventive maintenance.

Items found in this parts list have been carefully tested and selected. **Therefore: Use only genuine Power Team replacement parts!**

Additional questions can be directed to our Technical Services Department.

Note: Shaded areas reflect last revision(s) made to this form.