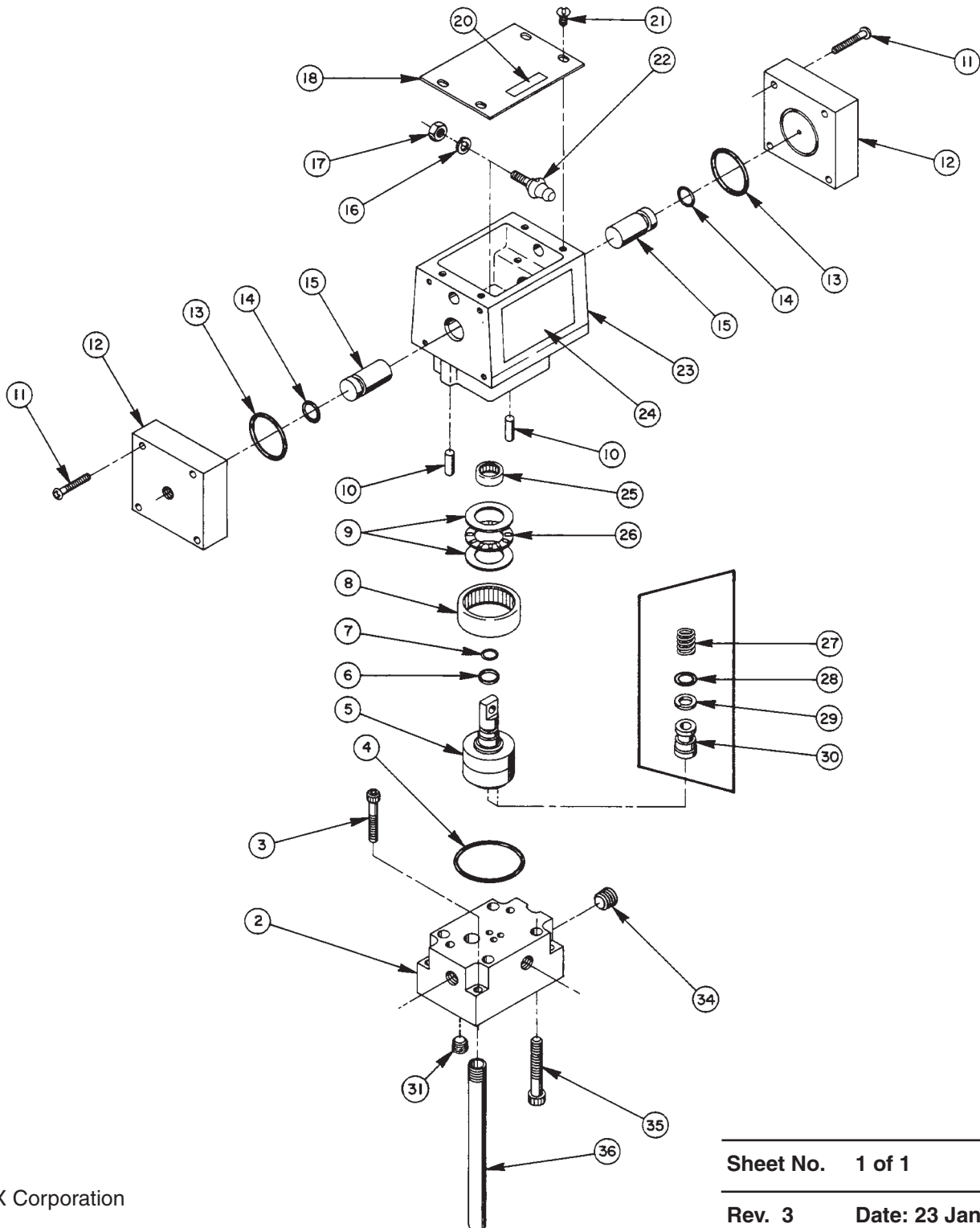


2 POSITION, 4-WAY -- PUMP MOUNTED -- AIR OPERATED VALVE ASSEMBLY



Parts List, Form No. 100542, Back sheet 1 of 1

| Item No. | Part No. | No. Req'd | Description |
|----------|----------|-----------|---|
| 2 | 61078 | 1 | Subplate |
| 3 | 10022 | 4 | Soc. Hd. Mach. Screw (1/4-20 UNC X 1-1/2 Lg.) |
| 4 | *214699 | 1 | O-ring (2-3/16 X 2" X 3/32; Disogrin) |
| | 19017 | 1 | O-ring (2-3/16 X 2" X 3/32; Viton) |
| | 251400 | 1 | O-ring (2-3/16 X 2" X 3/32; EPR) |
| 5 | 52064 | 1 | Rotor |
| 6 | *208672 | 1 | Glyd Ring |
| 7 | *10268 | 1 | O-ring (1/2 X 3/8 X 1/16; Nitrile) |
| | 11439 | 1 | O-ring (1/2 X 3/8 X 1/16; Viton) |
| | 17716 | 1 | O-ring (1/2 X 3/8 X 1/16; EPR) |
| 8 | 17505 | 1 | Needle Roller Bearing |
| 9 | 15935 | 2 | Thrust Washer |
| 10 | 17567 | 2 | Spring Pin |
| 11 | 13025 | 8 | Machine Screw (#8-32 UNC X 1 1/4 Lg.; Torque to 10/15 in. lbs.) |
| 12 | 45209 | 2 | Air Cap |
| 13 | *14852 | 2 | O-ring (1-9/16 X 1-3/8 X 3/32) |
| 14 | *210230 | 2 | O-ring (11/16 X 1/2 X 3/32) |
| 15 | 208673 | 2 | Cam Plunger |
| 16 | 10245 | 1 | Lockwasher |
| 17 | 15504 | 1 | Locknut |
| 18 | 303976 | 1 | Cover |
| 20 | 209383 | 1 | Patent Decal |
| 21 | 10164 | 4 | Machine Screw (#10-24 UNC X 3/8 Lg.) |
| 22 | 304030 | 1 | Lever |
| 23 | 61077 | 1 | Valve Body |
| 24 | 208715 | 1 | Part No. Decal |
| 25 | 208671 | 1 | Needle Roller Bearing |
| 26 | 12188 | 1 | Roller Bearing |
| 27 | 15095 | 2 | Compression Spring (1/4 O.D. X 15/32 Lg.) |
| 28 | *10265 | 2 | O-ring (5/16 X 3/16 X 1/16; Nitrile) |
| | 11437 | 2 | O-ring (5/16 X 3/16 X 1/16; Viton) |
| | 17714 | 2 | O-ring (5/16 X 3/16 X 1/16; EPR) |
| 29 | *15174 | 2 | Backup Washer (5/16 X 3/16 X 3/64; Nitrile) |
| 30 | 303935 | 2 | Shear Seal |
| 31 | 15499 | 1 | Pipe Plug (1/8 NPTF) |
| 34 | 10479 | 1 | Pipe Plug (1/4 NPTF) |
| 35 | 18328 | 4 | Soc. Hd. Cap Screw (5/16-18 X 2" Lg.; Torque to 150/200 in. lbs.) |
| 36 | 200609 | 1 | Drain Tube |

PARTS INCLUDED BUT NOT SHOWN

| | | |
|-------|---|-------------------|
| 9689 | 1 | Straight Fitting |
| 16797 | 1 | 90° Elbow Fitting |

Part numbers marked with an (*) asterisk are contained in Repair Kit No. 300332.
 Note: Alternate material seals listed for special valves factory equipped with viton or EPR seals.

NOTE: To convert this Model A valve to a Model B, order Conversion Kit No. 301023.

Refer to any operating instructions included with this product for detailed information about operation, testing, disassembly, reassembly, and preventive maintenance.

Items found in this parts list have been carefully tested and selected. Therefore: **Use only genuine Power Team replacement parts!**

Additional questions can be directed to our Technical Services Department.

Note: Shaded areas reflect last revision(s) made to this form.