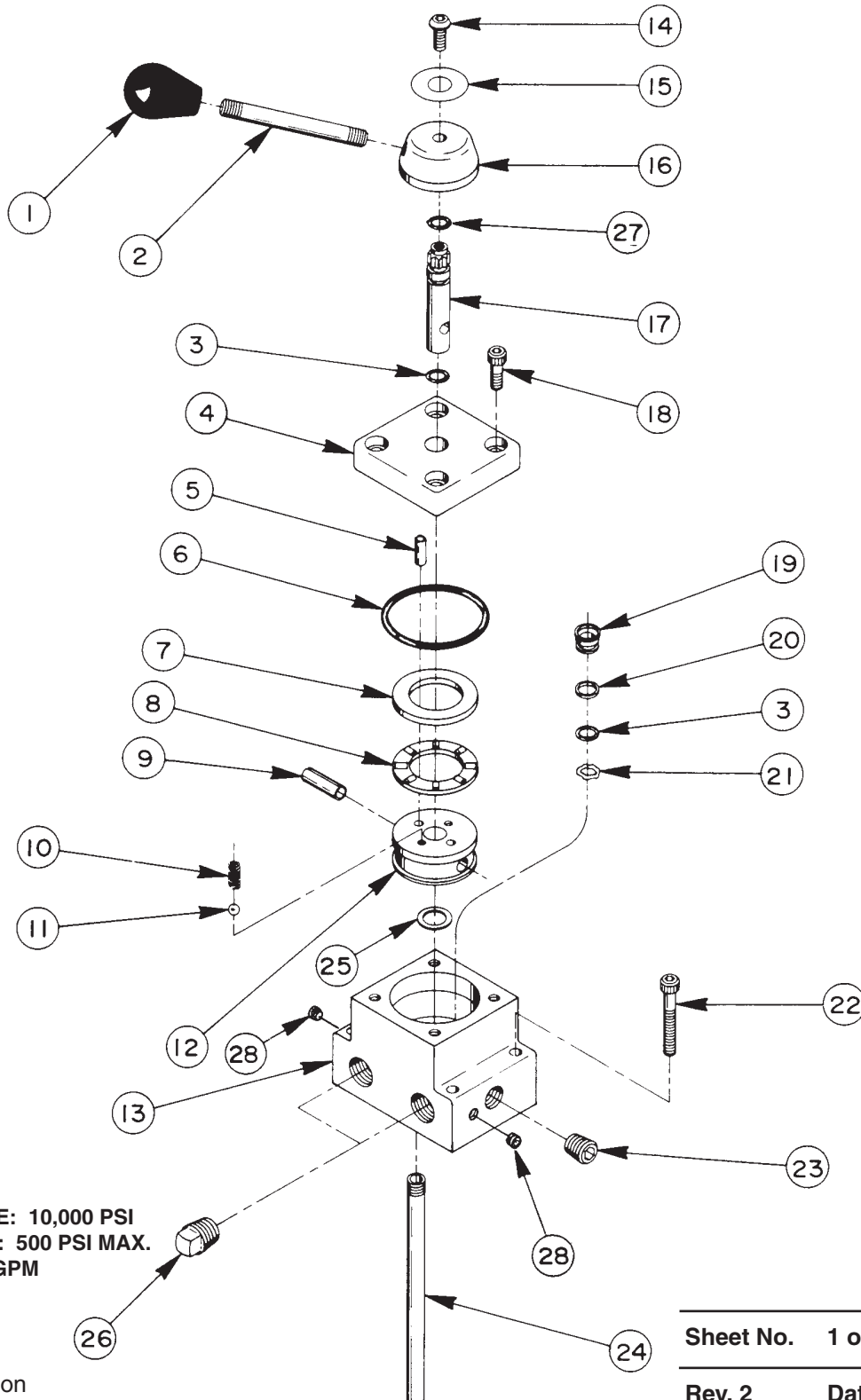


Parts List for:

9500
9501
R9500

VALVE ASSEMBLY



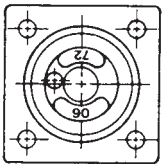
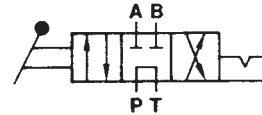
RATED PRESSURE: 10,000 PSI
CASE PRESSURE: 500 PSI MAX.
RATED FLOW: 5 GPM

Parts List, Form No. 100623, Back sheet 1 of 2

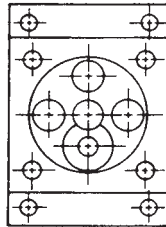
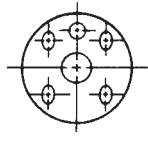
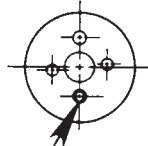
Item No.	Part No.	No. Req'd	Description	Item No.	Part No.	No. Req'd	Description
1	211911	1	Plastic Knob	14	15911	1	Cap Screw (1/4-20 X 5/8 Lg.; Torque to 60/80 in. lbs.)
2	21639	1	Stud	15	211936	1	Decal
3	*10268	4	O-ring (1/2 X 3/8 X 1/16; Nitrile)	16	46057	1	Stem End
	11439	4	O-ring (1/2 X 3/8 X 1/16; Viton)	17	46048	1	Stem
	17716	4	O-ring (1/2 X 3/8 X 1/16; EPR)	18	11013	4	Cap Screw (5/16-18 X 1" Lg.; Torque to 300/320 in. lbs.)
4	61343	1	End Cap	19	252460	3	Shear Seal
5	211915	1	Pin	20	*11863	3	Backup Washer (1/2 X 3/8 X 1/16)
	250056	1	Pin (After 6-1-91)	21	21975	3	Spring (.490 X .345 X .080 thk.)
6	*15892	1	O-ring (1.956 X 1.720 X .118; Nitrile)	22	10854	4	Cap Screw (1/4-20 UNC X 1-3/4" Lg.) Note: When using this valve on a PE30 Series pump, order (4) 12001 Screws for mounting valve to pump. <u>OR</u> When using this valve on a PE324-BID pump, order (4) 10855 Screws for mounting valve to pump.
	19097	1	O-ring (1.956 X 1.720 X .118; Viton)	23	14972	1	Pipe Plug (1/4 NPTF)
	212887	1	O-ring (1.956 X 1.720 X .118; EPR)	24	200609	1	Drain Tube
7	11227-1	1	Thrust Bearing Washer	25	214801	1	Spacer
8	11228	1	Roller Thrust Bearing	26	11127	2	Pipe Plug (3/8" NPTF)
9	16940	1	Roll Pin (5/16 dia. X 1-1/2 Lg.)	27	213674	1	Shaft Seal (After 6-1-91)
	10496	1	Roll Pin (5/16 dia. X 1" Lg.; After 6-1-91)	28	15130	2	Pipe Plug (1/16 NPTF)
10	15691	1	Compression Spring (1/4 O.D. X 5/8 Lg.)				
11	10375	1	Ball (1/4" Dia.)				
12	421472	1	Rotor				
13	61288	1	Valve Body				

Part numbers marked with an asterisk (*) are contained in Repair Kit No. 300451.
Note: Alternate material seals listed for special valves factory equipped with viton or EPR seals.

9500 & R9500 PUMP MOUNTED MANUAL DETENTED 3-Position, 4-Way Tandem Center Valve



Position opening as shown



FUNCTION

Center Position:

"A" and "B" ports blocked "Pressure" Port to tank

"A" Position:

Pressure to "A" Port
"B" Port to tank

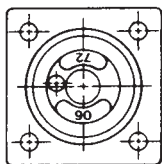
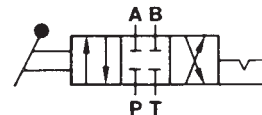
"B" Position:

Pressure to "B" Port
"A" Port to tank

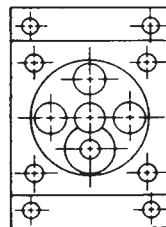
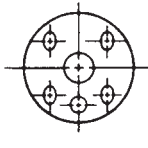
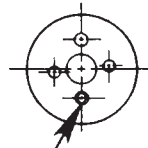
NOTE: All ports open to tank during transition between valve positions.

SPECIFICATIONS

9501 PUMP MOUNTED MANUAL DETENTED 3-Position, 4-Way Closed Center Valve



Position opening as shown



FUNCTION

Center Position:

All Ports blocked

"A" Position:

Pressure to "A" Port
"B" Port to tank

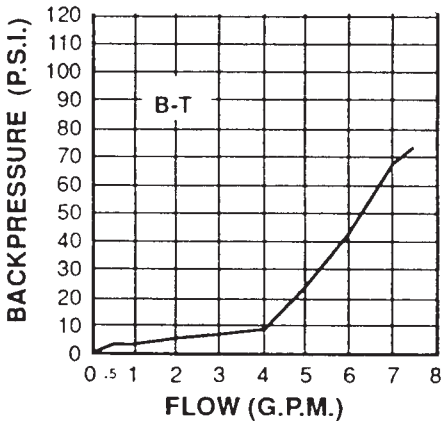
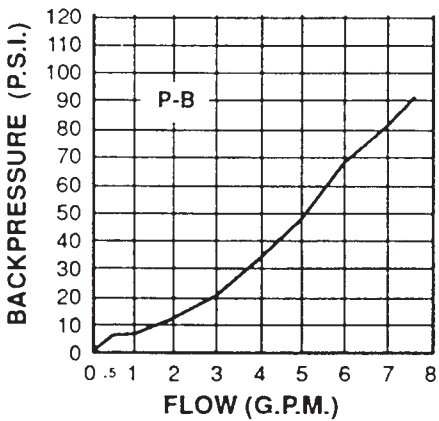
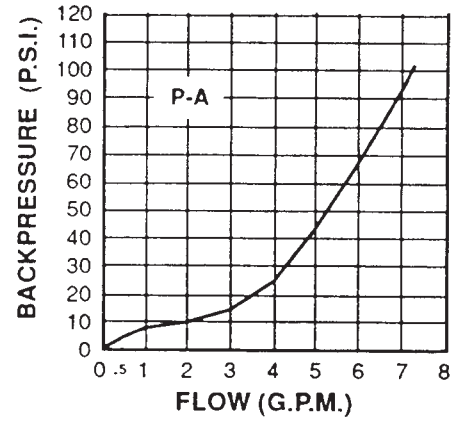
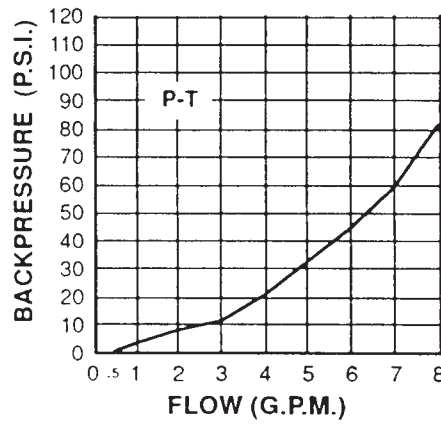
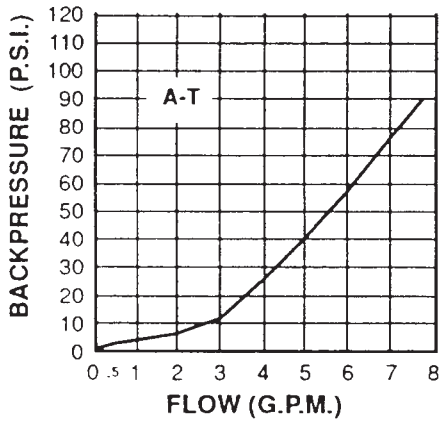
"B" Position:

Pressure to "B" Port
"A" Port to tank

NOTE: All ports open to tank during transition between valve positions.

Note: Shaded areas reflect last revision(s) made to this form.

PRESSURE DROP AND FLOW CHARTS



Refer to any operating instructions included with this product for detailed information about operation, testing, disassembly, reassembly, and preventive maintenance.

Items found in this parts list have been carefully tested and selected. **Therefore: Use only genuine replacement parts!**

Additional questions can be directed to our Technical Services Department.