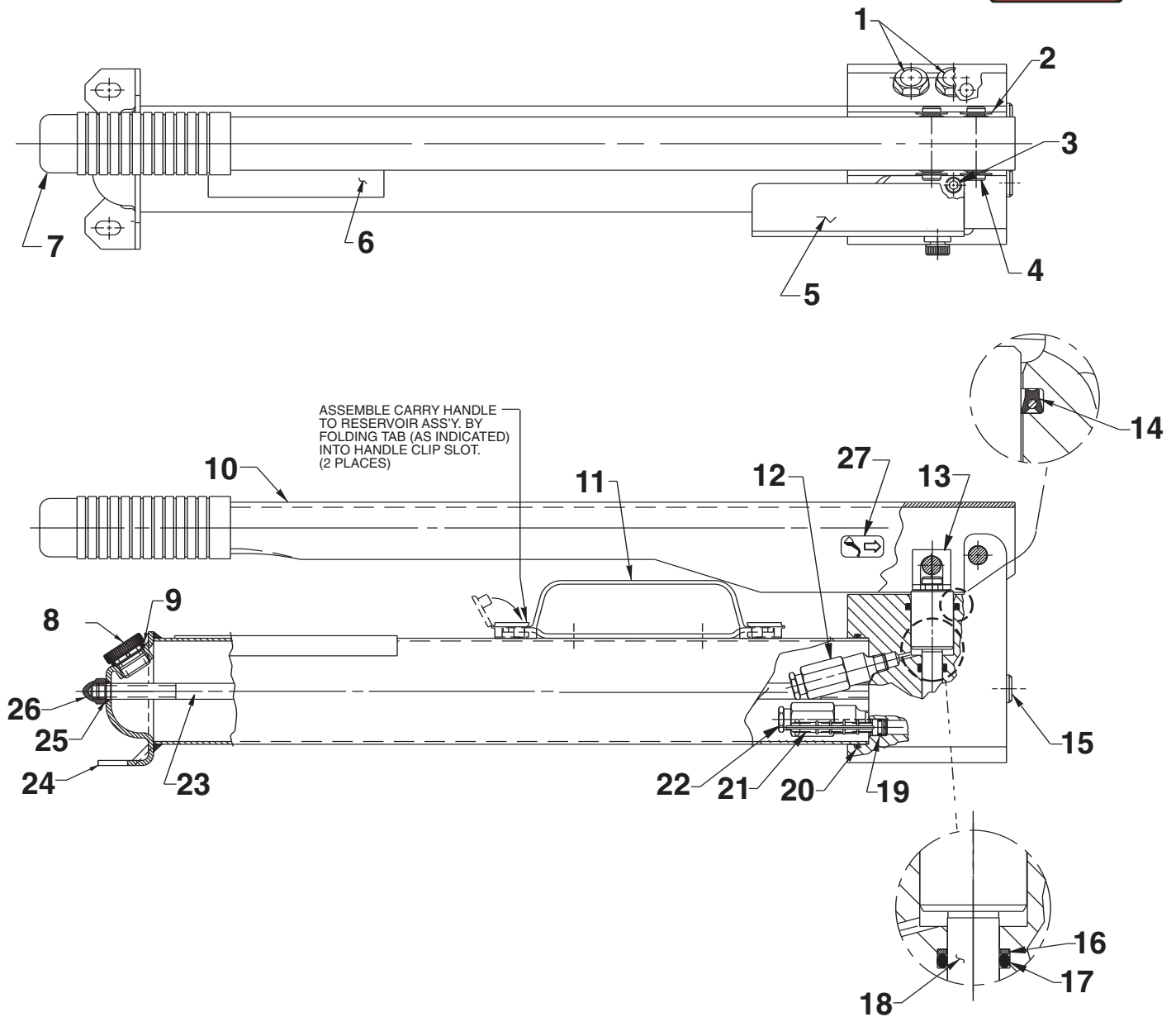


MODEL B TWO-SPEED HYDRAULIC HAND PUMP

Max. Capacity: 10,500 PSI (725 Bar)



Parts List, Form No. 101774, Back sheet 1 of 2

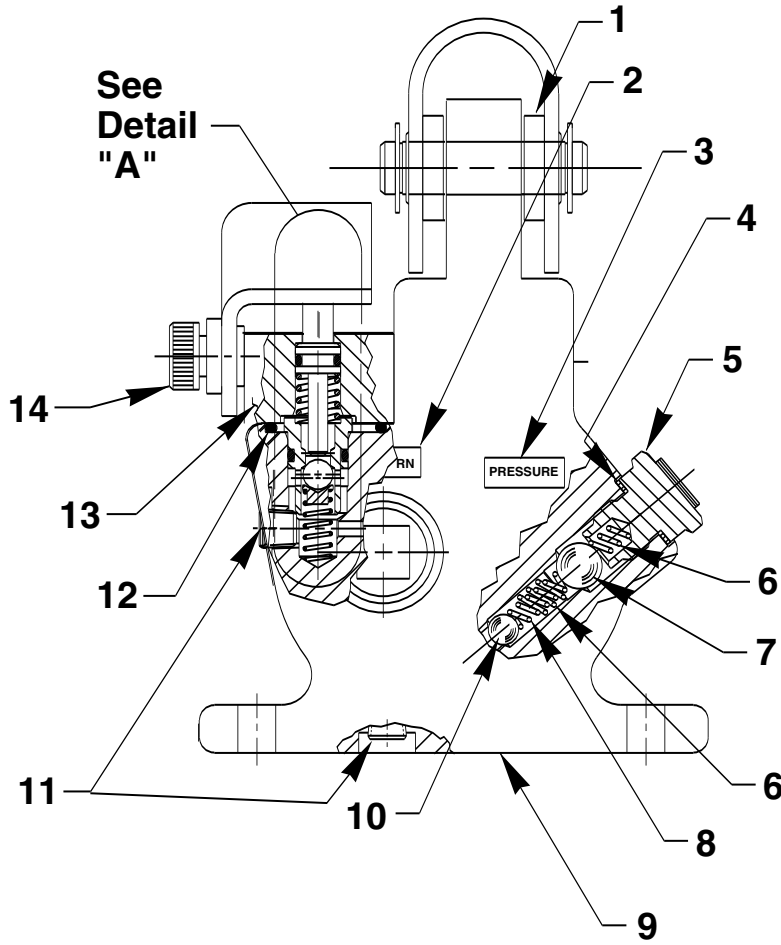
Item No.	Part No.	No. Req'd	Description
1	*215907	2	Instruction Decal
2	211743	4	Retaining Ring (NOTE: Expand the retaining ring to .440 dia. max. during installation)
3	10012	3	Soc. Hd. Cap Screw (1/4-20 X 7/8 Lg.; Torque to 90/100 in. lbs.)
4	211742	2	Pin
5	251716BK9	1	Release Valve Lever Ass'y
6	*305977	1	Warning Decal
7	211769	1	Handle Grip
8	351245	1	Filler Cap
9	10274	1	O-ring (.87 x .68 Nitrile)
10	64995YE3	1	Handle
11	58048	1	Carry Handle
12	21278-15	1	Relief Valve Ass'y (Reset to 1,400 P.S.I.)
13	350923	1	Piston Clip
14	*250233	1	U-cup Packing
15	10909	2	Plug Fitting (3/8 NPTF)
16	*213987	1	O-ring Backup Washer (11/16 X 1/2 X 3/64; Assemble with concave surface toward o-ring.)
17	*10271	1	O-ring (11/16 X 1/2 X 3/32)
18	421412	1	Two-speed Piston
19	*12557	1	O-ring (11/32 X 7/32 X 1/16)
20	*211495	1	O-ring (2-11/16 X 2-1/2 X 3/32)
21	*215075	1	Filter
22	3000250-1	1	Relief Valve Assembly
23	252502	1	Tie Rod
24	351367	1	Reservoir
25	13943	1	O-ring (.50 x .37 Urethane)
26	10842	1	Hex Cap Nut (3/8-16; Torque 90/110 in. lbs. Fully engage acorn nut onto tie rod before torquing to body.)
27	253234	1	Decal (Oil Pivot Pins)

Part numbers marked with an asterisk (*) are contained in Repair Kit No. 300814.

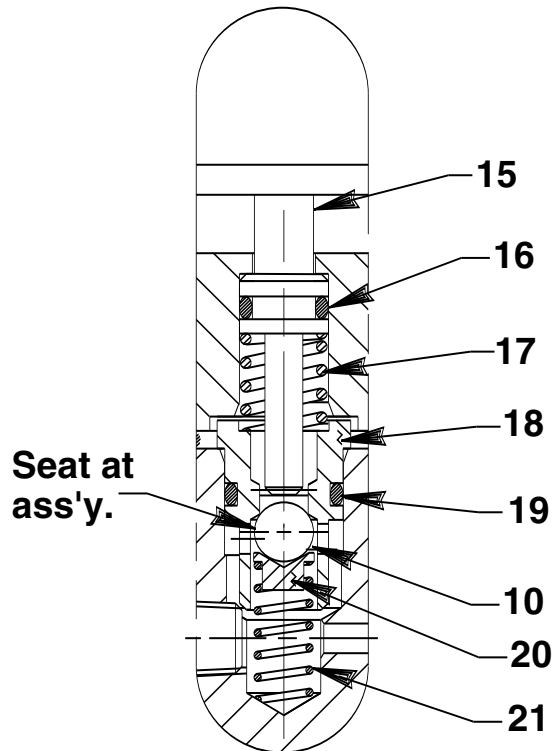
Note: Shaded areas reflect last revision(s) made to this form.



To Parts List



Detail "A"



Parts List, Form No. 101774, Back sheet 2 of 2

Item No.	Part No.	No. Req'd	Description
1	251922	2	Bushing
2	201746	1	Return Decal
3	215301	1	Pressure Decal
4	*14874	2	Soft Copper Washer (.700 X 1/2 X 1/32)
5	351952	2	Valve Screw (Torque to 480/500 in. lbs.)
6	*10444	4	Compression Spring (3/16 I.D. X 13/32 Lg.)
7	*10378	2	Steel Ball (3/8 Dia.)
8	*211797	2	Compression Spring (5/32 O.D. X 5/8 Lg.)
9	65003	1	Pump Body
10	*10375	3	Steel Ball (1/4 Dia.)
11	11084	1	Plug (Apply Loctite #242 or equiv.; Torque to 80 in. lbs.)
12	*10658	1	O-ring (1" X 13/16 X 3/32)
13	420979	1	Release Valve Body
14	251710	1	Hex. Soc. Hd. Shoulder Screw (Apply Loctite #242 or equivalent; Torque to 100 in. lbs.)
15	29365	1	Release Valve Button
16	*10266	1	O-ring (3/8 X 1/4 X 1/16)
17	251297	1	Compression Spring (.36 OD x .51 x .05 ws)
18	34377	1	Poppet Retainer
19	*15279	1	O-ring (1/2 X 3/8 X 1/16)
20	25685	1	Ball Retainer
21	*14624	1	Compression Spring (1/4 O.D. X 3/4 Lg.)

Part numbers marked with an asterisk (*) are contained in Repair Kit No. 300814.



Refer to any operating instructions included with this product for detailed information about operation, testing, disassembly, reassembly, and preventive maintenance.

Items found in this parts list have been carefully tested and selected. **Therefore: Use only genuine Power Team replacement parts!**

Additional questions can be directed to our Technical Services Department.