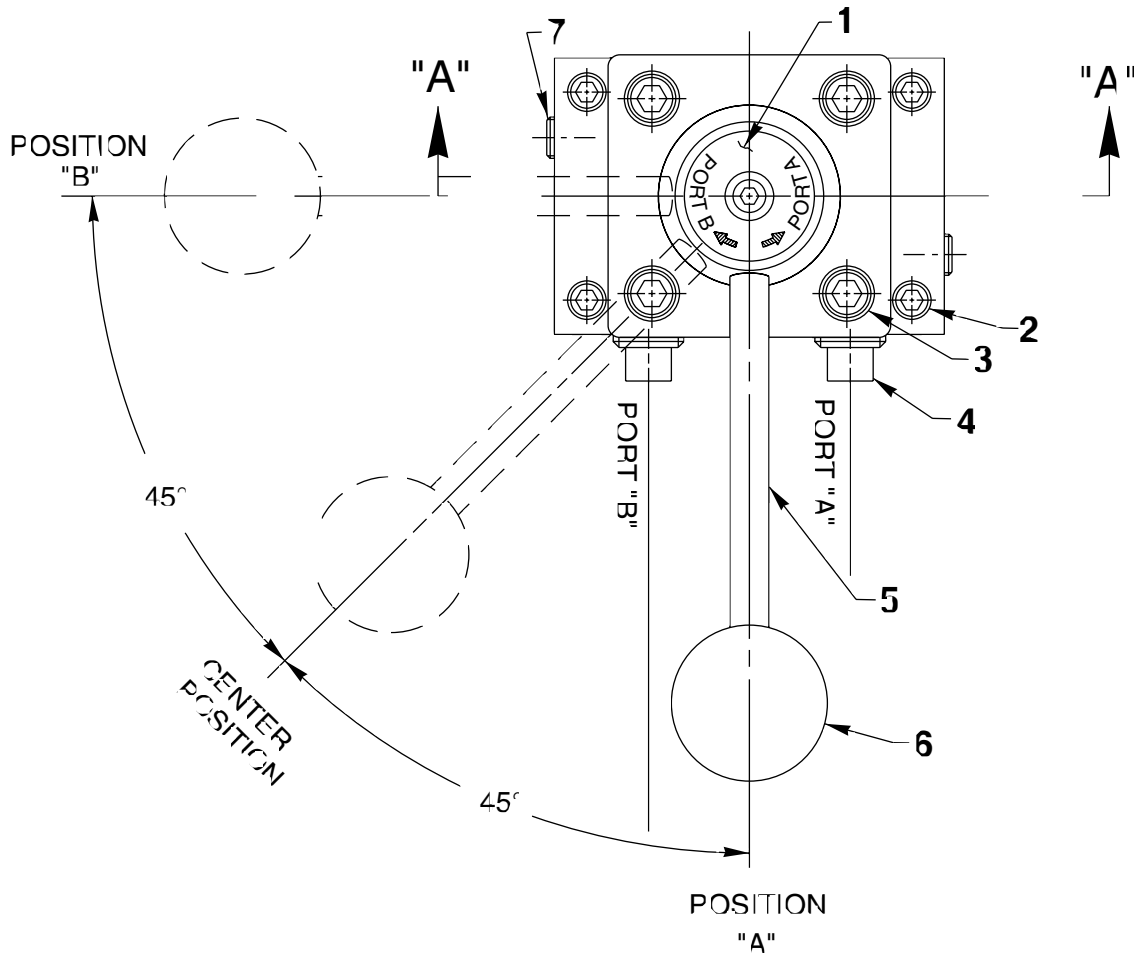


## MODEL A MANUAL VALVE ASSEMBLY

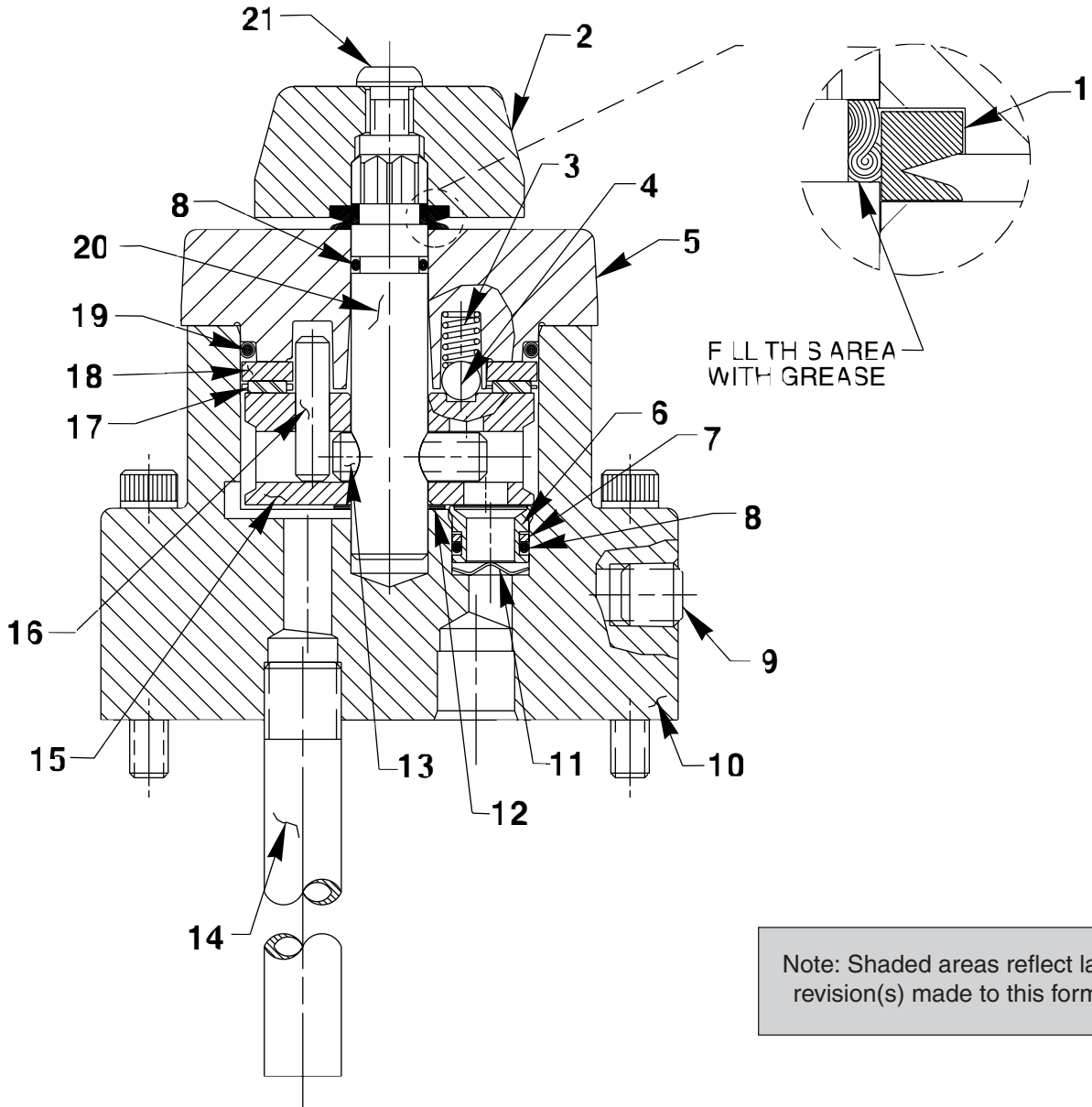
### TOP VIEW



Item No.	Part No.	No. Req'd	Description
1	211936	1	Decal
2	10854	4	Screw (1/4-20 UNC X 1-3/4" Lg.)
3	11013	4	Screw (5/16-18 X 1" Lg.; Torque to 300/320 in. lbs.)
4	11127	2	Plug Fitting (3/8 NPTF)
5	250042	1	Handle Stud
6	211911	1	Knob
7	15130	2	Plug Fitting

Part numbers marked with an asterisk (\*) are contained in Repair Kit No. 300451.

SECTION A-A



Note: Shaded areas reflect last revision(s) made to this form.

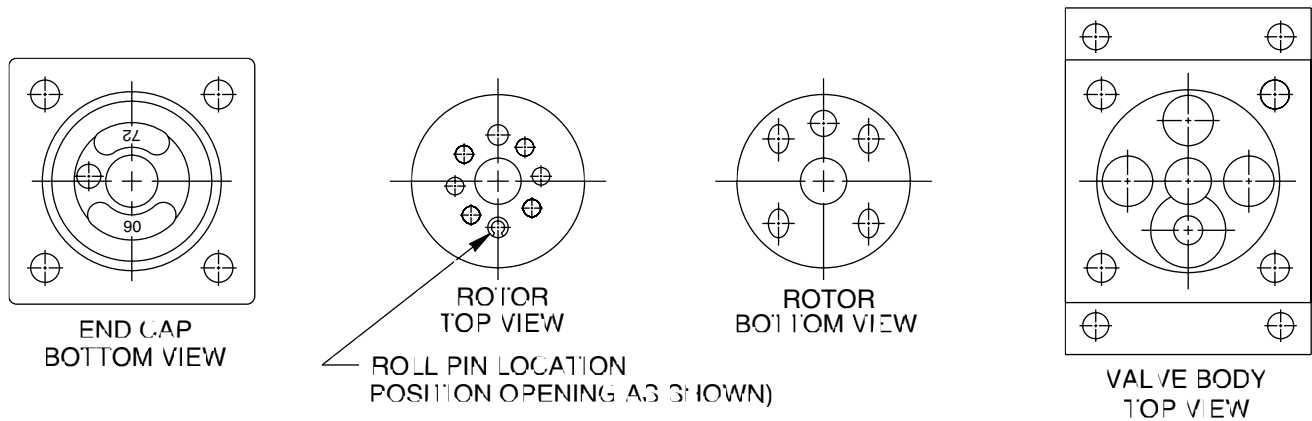
Item No.	Part No.	No. Req'd	Description
1	†*213674	1	V-ring
2	46057	1	End Stem
3	15691	1	Spring (1/4 O.D. X 5/8 Lg.)
4	10375	1	Ball (1/4 Dia.)
5	61343	1	Valve Cap
6	†252460	3	Seal
7	†*11863	3	Backup Washer (1/2 X 3/8 X 1/16)
8	†*10268	4	O-ring (1/2 X 3/8 X 1/16; Nitrile)
	11439	4	O-ring (1/2 X 3/8 X 1/16; Viton)
	17716	4	O-ring (1/2 X 3/8 X 1/16; EPR)
9	14972	1	Plug Fitting (1/4 NPTF)
10	61288	1	Valve Body
11	21975	3	Spring Washer

Item No.	Part No.	No. Req'd	Description
12	214801	1	Spacer Washer
13	10496	1	Slotted Spring Pin
14	200609	1	Drain Tube
15	†421472	1	Rotor
16	250056	1	Slotted Spring Pin
17	11228	1	Needle Bearing
18	11227-1	1	Bearing Race
19	†*15892	1	O-ring (1.956 X 1.720 X .118; Nitrile)
	19097	1	O-ring (1.956 X 1.720 X .118; Viton)
	212887	1	O-ring (1.956 X 1.720 X .118; EPR)
20	46048	1	Stem
21	15911	1	Screw (Torque to 60/80 in. lbs.; Note: Apply Loctite No. 222 or equivalent at assembly.)

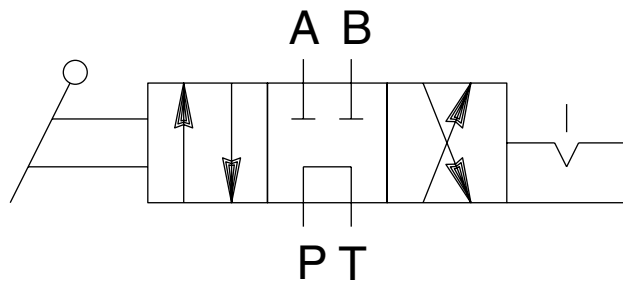
Part numbers marked with an asterisk (\*) are contained in Repair Kit No. 300451.

Part numbers marked with a dagger (†) are contained in Repair Kit No. 300947.

### INTERNAL ASSEMBLY ORIENTATION OF PARTS



### SPECIFICATIONS



**HYDRAULIC SCHEMATIC**

**FUNCTION:**

**CENTER POSITION:**

"A" AND "B" PORTS BLOCKED  
 "PRESSURE" PORT TO TANK.

**"A" POSITION:**

PRESSURE TO "A" PORT  
 "B" PORT TO TANK.

**"B" POSITION:**

PRESSURE TO "B" PORT  
 "A" PORT TO TANK.

**NOTE:** ALL PORTS OPEN TO TANK DURING  
 TRANSITION BETWEEN VALVE POSITIONS.

VALVE, PUMP MOUNTED MANUAL DETENTED  
 3-POSITION, 4-WAY TANDEM CENTER  
 RATED PRESSURE: 10,000 P.S.I.  
 CASE PRESSURE: 500 P.S.I. MAXIMUM  
 RATED FLOW: 5 GPM REF.

## PRESSURE DROP AND FLOW CHARACTERISTICS

