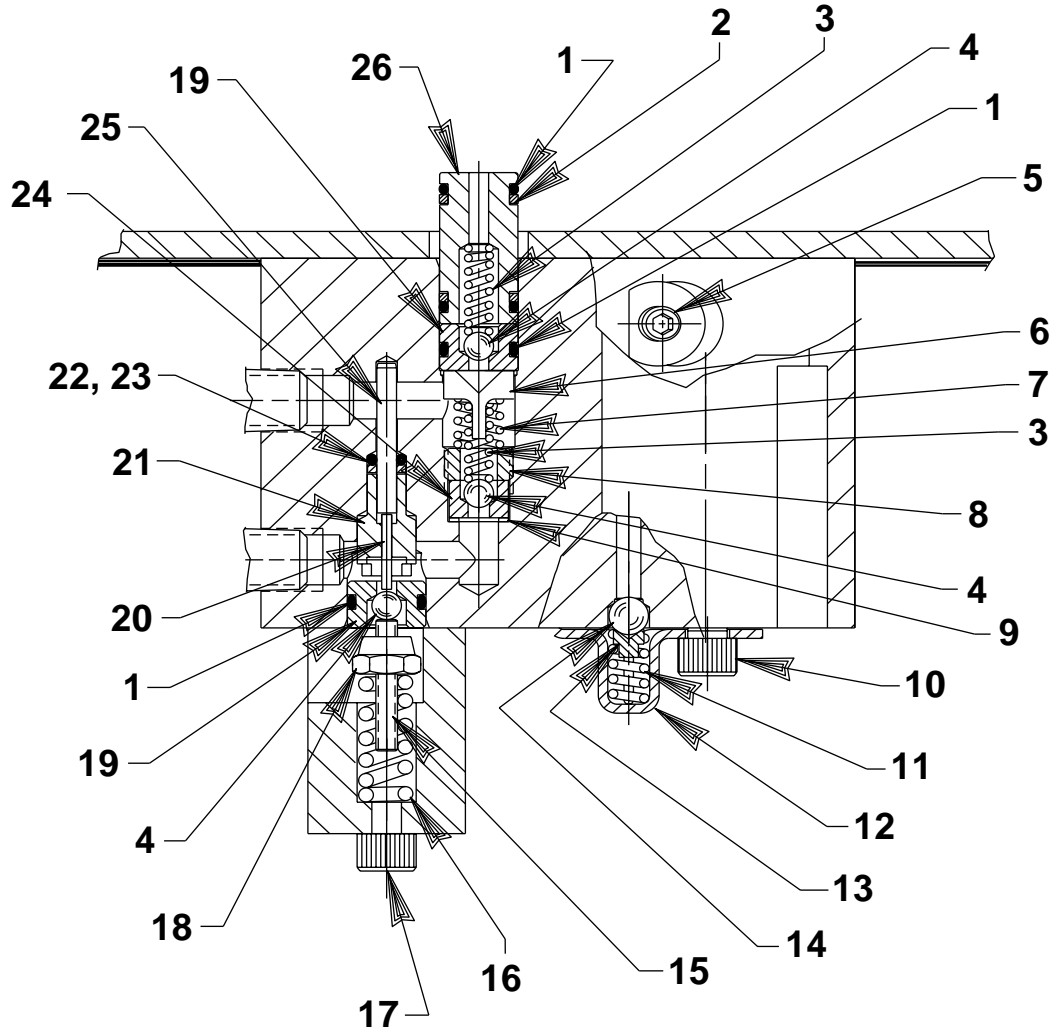


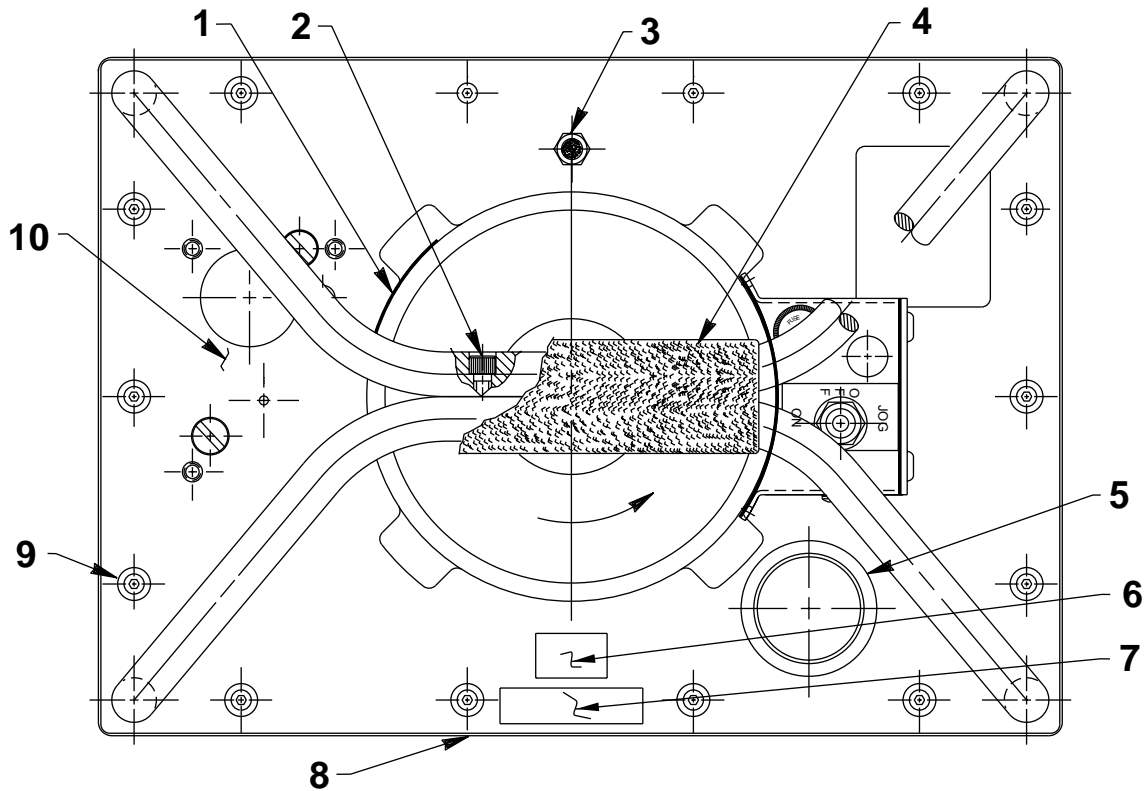
HIGH PRESSURE PUMP ASSEMBLY



Item No.	Part No.	No. Req'd	Description	Item No.	Part No.	No. Req'd	Description
1	10268	4	O-ring (1/2 X 3/8 X 1/16)	14	10002	1	Cap Screw (1/4-20 UNC X 3/8 Lg.; Torque to 70 in. lbs.)
2	11863	2	Backup Washer (1/2 X 3/8 X 1/16)	15	251067	1	Set Screw (Unloading valve; #10-24 UNC x 1" Lg.)
3	10445	2	Compression Spring (5/32 O.D. X 3/4 Lg.)	16	14484	1	Compression Spring (3/8 O.D. X 1" Lg.)
4	15130	1	Plug (1/16 NPTF)	17	10854	2	Cap Screw (1/4-20 UNC X 1-3/4" Lg.; Torque to 70 in. lbs.)
5	251601	1	Outlet Ball Stop	18	207405	1	Locknut (10-24 UNC)
6	10444	1	Compression Spring (3/16 I.D. X 13/32 Lg.)	19	251065	2	Replaceable Seat
7	209797	1	Hollow Lock Screw (7/16-20 UNF-3A; Torque to 120 in. lbs.)	20	251611	1	Dowel Pin (1/2 x 3/8 x .049)
8	12223	4	Ball (3/16 Dia.)	21	251068	1	Guide
9	10442	1	Washer (3/8 X 1/4 X 1/32)	22	17797	1	O-ring (1/4 X 1/8 X 1/16)
10	10374	1	Steel Ball (7/32 Dia.)	23	214992	1	Backup Ring (15/64 x 1/8 x 3/64)
11	200796	1	Adapter	24	209787	1	Replaceable Seat
12	15691	1	Compression Spring (1/4 O.D. X 5/8 Lg.)	25	16471	1	Dowel Pin (1/8 dia. x 1" Lg.; Taper on pin should be away from Guide [Item #21].)
13	350577	1	Spring Retainer	26	251581	1	Bushing

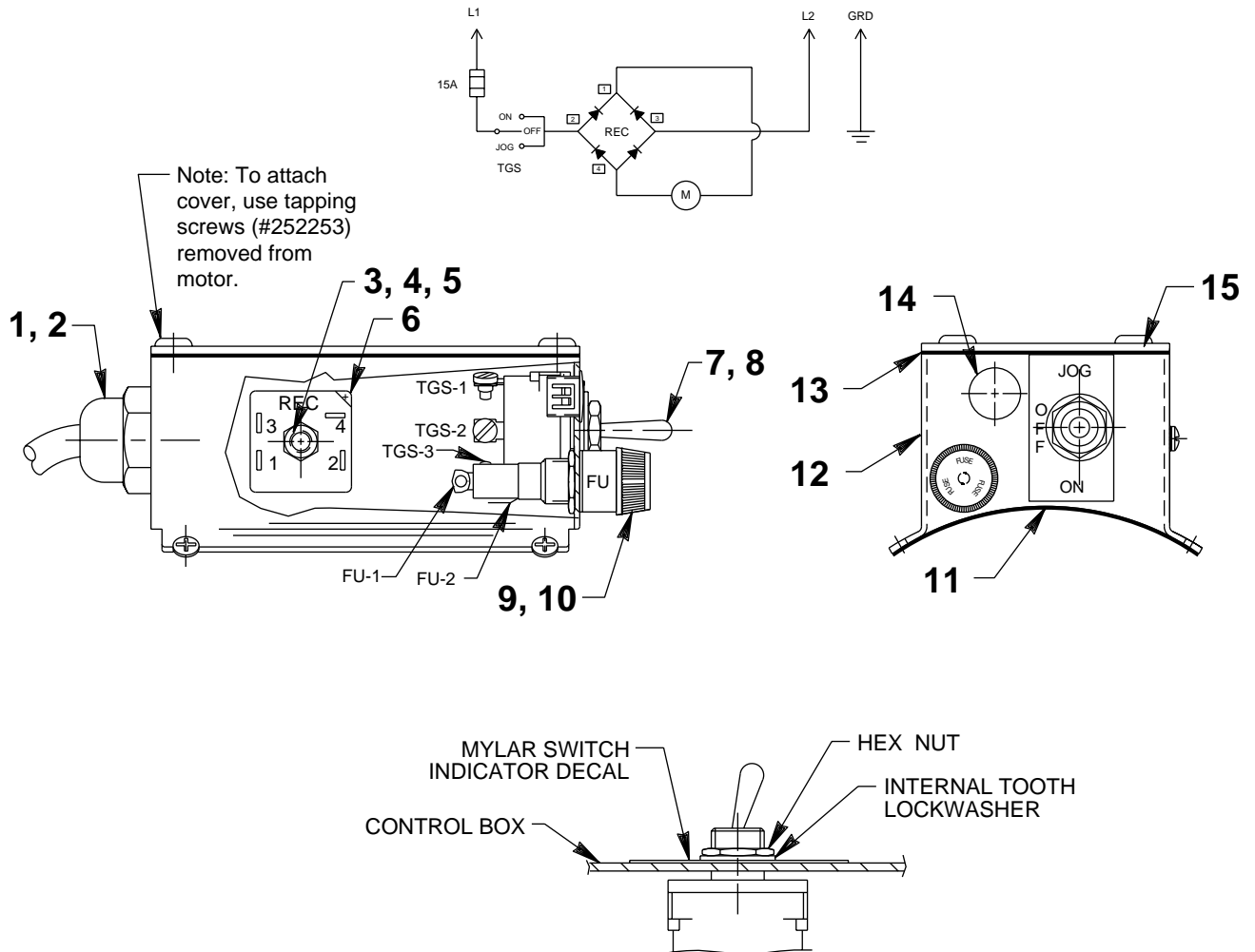
Note: Shaded areas reflect last revision(s) made to this form.

TOP VIEW



Item No.	Part No.	No. Req'd	Description
1	351024	1	Decal
2	10008	2	Cap Screw (For PE302-2, PE302-2-220, PE303-2, PE303-2-220, PE304-2 & PE304-2-220 only)
3	251599	1	Breather Filter Vent
4	251600	1	Handle Grip (For PE302-2, PE302-2-220, PE303-2, PE303-2-220, PE304-2, PE304-2-220 only)
5	350925	1	Filler Cap
6	203972	1	Decal (CSA logo)
7	213695	1	Decal (Intermittent Duty)
8	309219	2	Trade Name Decal (For PE302, PE302-220, PE303, PE303-220, PE304 & PE304-220)
	309221	2	Trade Name Decal (For PE302-2, PE302-2-220, PE303-2, PE303-2-220, PE304-2, PE304-2-220, PE30-HOGEN & PE30-HOGEN-115)
9	10177	14	Cap Screw (1/4-20 X 3/4 Lg.; Torque to 60/80 in. lbs.)
10	9584	1	Valve Assembly (For PE302, PE302-2, PE302-220 & PE302-2-220; See Form No. 101239; Note: When ordering this valve also order (4) 10890 Cap Screws for mounting valve to pump.)
	9520	1	Valve Assembly (For PE303, PE303-2, PE303-220 & PE303-2-220; Apply Loctite #242 to threads of valve handle stem [both end]. - See Form No. 101377; Note: When ordering this valve also order (4) 10890 Cap Screws for mounting valve to pump.)
	52516	1	Valve Assembly (For PE304, PE304-220 & PE304-2-220; Apply Loctite #242 to threads of valve handle stem [both end]. - See Form No. 100623; Note: When ordering this valve also order (4) 11956 Cap Screws for mounting valve to pump.)
	60916	1	Pressure Compensated Valve (For PE30-HOGEN & PE30-HOGEN-115; See Form No. 101373; Note: When ordering this valve also order (4) 251078 Cap Screws and (4) 10245 lockwashers for mounting valve to pump.)
OPTIONAL VALVES			
	9628	1	Manual Valve (See Form No. 101907; Note: When ordering this valve also order (4) 10890 Cap Screws for mounting valve to pump.)

ELECTRICAL DATA 110/115 V., 50/60 Hz.

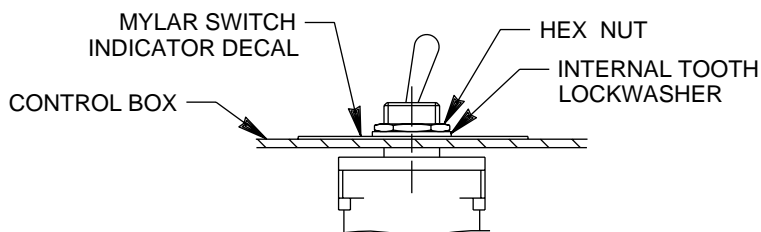
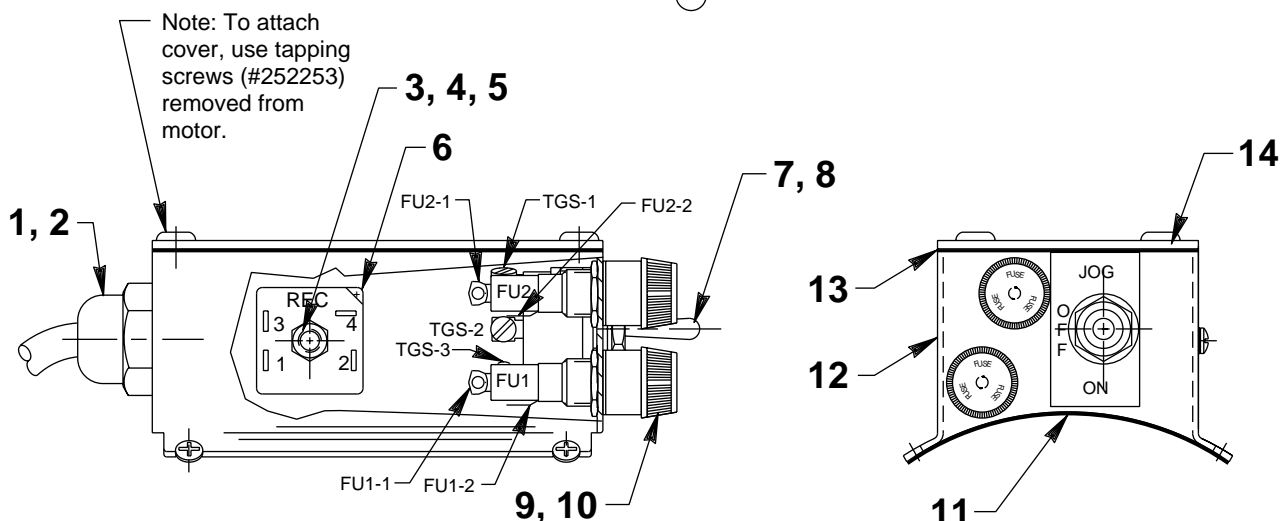
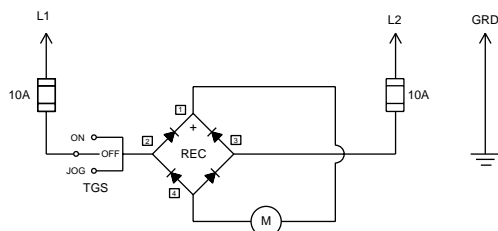


Item No.	Part No.	No. Req'd	Description
1	216666	1	Strain Relief Bushing
2	216680	1	Conduit Locknut
3	10167	1	Screw (10-24 x 3/4 Lg.)
4	11108	1	Washer
5	10197	1	Hex Nut (10-24)
6	251050	1	Rectifier
7	350980	1	Toggle Switch
8	25926	1	Decal (Switch Indicator)
9	18292	1	Fuse Holder

Item No.	Part No.	No. Req'd	Description
10	252288	1	Fuse (15 AMP)
11	252992	1	Conduit Box Gasket
12	59037BK2	1	Control Box
13	252991	1	Conduit Box Cover Gasket
14	17782	1	Snap Plug
15	252990	1	Conduit Box Cover

PARTS INCLUDED BUT NOT SHOWN
25229 1 Cord Set (8 ft. lg.)

ELECTRICAL DATA 220/230 V., 50/60 Hz.



Item No.	Part No.	No. Req'd	Description
1	216666	1	Strain Relief Bushing
2	216680	1	Conduit Locknut
3	10167	1	Screw (10-24 x 3/4 Lg.)
4	11108	1	Washer
5	10197	1	Hex Nut (10-24)
6	251050	1	Rectifier
7	350980	1	Toggle Switch
8	25926	1	Decal (Switch Indicator)
9	18292	2	Fuse Holder

Item No.	Part No.	No. Req'd	Description
10	252873	2	Fuse (15 AMP)
11	252992	1	Conduit Box Gasket
12	59037BK2	1	Control Box
13	252991	1	Conduit Box Cover Gasket
14	252990	1	Conduit Box Cover

PARTS INCLUDED BUT NOT SHOWN
308752 9 ft. Electrical Cable (14/3 SJTO)