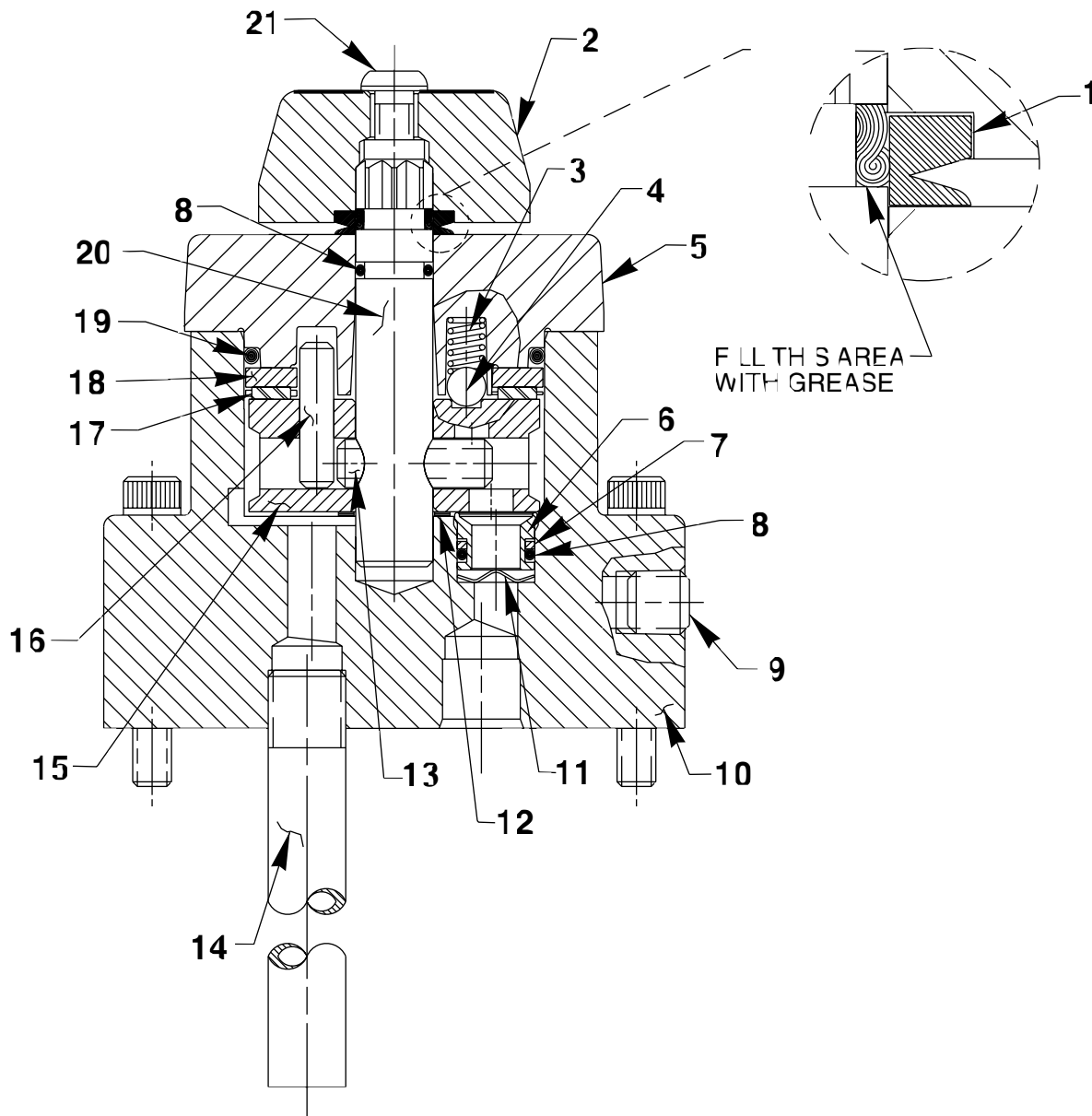


SECTION A-A

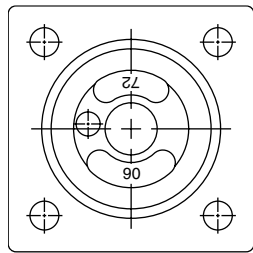


Item No.	Part No.	No. Req'd	Description
1	*213674	1	V-ring
2	46057	1	End Stem
3	15691	1	Spring (1/4 O.D. X 5/8 Lg.)
4	10375	1	Ball (1/4 Dia.)
5	61343	1	Valve Cap
6	*252460	3	Seal
7	*11863	3	Backup Washer (1/2 X 3/8 X 1/16)
8	*10268	4	O-ring (1/2 X 3/8 X 1/16; Nitrile)
	11439	4	O-ring (1/2 X 3/8 X 1/16; Viton)
	17716	4	O-ring (1/2 X 3/8 X 1/16; EPR)
9	14972	1	Plug Fitting (1/4 NPTF)
10	65833	1	Valve Body
11	*21975	3	Spring Washer

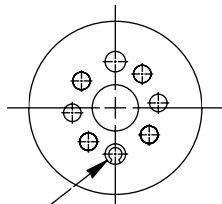
Item No.	Part No.	No. Req'd	Description
12	214801	1	Spacer Washer
13	10496	1	Slotted Spring Pin
14	200609	1	Drain Tube
15	421472	1	Rotor
16	250056	1	Slotted Spring Pin
17	11228	1	Needle Bearing
18	11227-1	1	Bearing Race
19	*15892	1	O-ring (1.956 X 1.720 X .118; Nitrile)
	19097	1	O-ring (1.956 X 1.720 X .118; Viton)
	212887	1	O-ring (1.956 X 1.720 X .118; EPR)
20	46048	1	Stem
21	15911	1	Screw (Torque to 60/80 in. lbs.; Note: Apply Loctite No. 222 or equivalent at assembly.)

Part numbers marked with an asterisk (*) are contained in Repair Kit No. 300976.

INTERNAL ASSEMBLY ORIENTATION OF PARTS

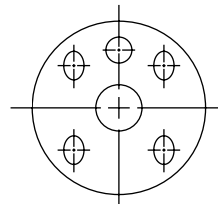


END CAP
BOTTOM VIEW

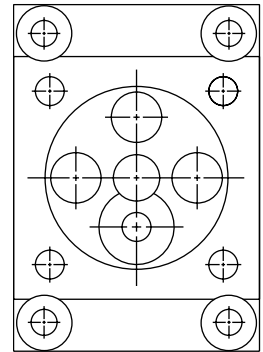


ROTOR
TOP VIEW

ROLL PIN LOCATION
POSITION OPENING AS SHOWN)

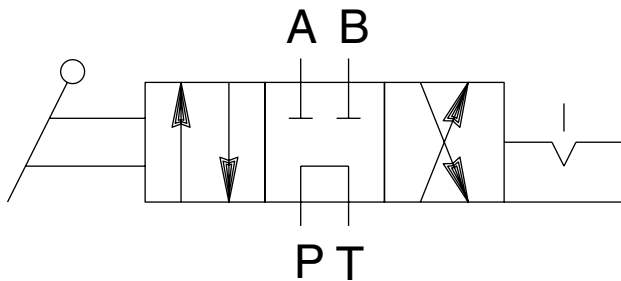


ROTOR
BOTTOM VIEW



VALVE BODY
TOP VIEW

SPECIFICATIONS



HYDRAULIC SCHEMATIC

FUNCTION:

CENTER POSITION:

"A" AND "B" PORTS BLOCKED
"PRESSURE" PORT TO TANK.

"A" POSITION:

PRESSURE TO "A" PORT
"B" PORT TO TANK.

"B" POSITION:

PRESSURE TO "B" PORT
"A" PORT TO TANK.

NOTE: ALL PORTS OPEN TO TANK DURING
TRANSITION BETWEEN VALVE POSITIONS.

VALVE, PUMP MOUNTED MANUAL DETENTED
3-POSITION, 4-WAY TANDEM CENTER
RATED PRESSURE: 10,000 P.S.I.
CASE PRESSURE: 500 P.S.I. MAXIMUM
RATED FLOW: 5 GPM REF.

PRESSURE DROP AND FLOW CHARTS

