

Model Shown:

RP25, RP55

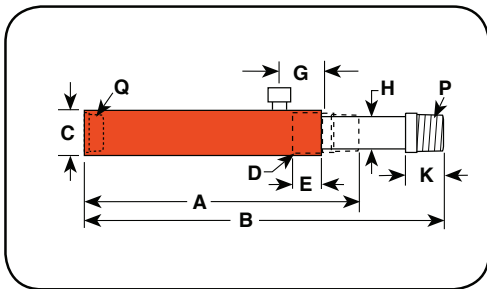


Features

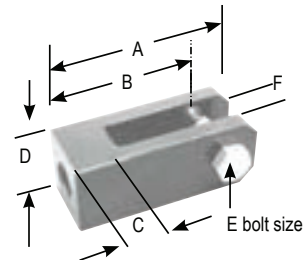
DESIGNED FOR PULLING AND TENSIONING APPLICATIONS.

- Heavy-duty compression spring provides long cycle life and rapid extension of piston.
- Spring automatically extends piston rod when pump pressure is released.
- Complies with ANSI / ASME B30.1 safety standards.

Technical Dimensions



Clevis Ordering Information



Use with Cyl. No.	Order No.	A (mm)	B (mm)	C (mm)	D (mm)	E (mm)	F (mm)
RP25	421057*	130,30	109,47	33,27	50,80	19,05	25,40
RP55	421056**	152,40	127,00	38,10	63,50	22,35	31,75

* For base mounting, extension rod 351106 is required.

** For base mounting, extension rod 351075 is required.



Learn More - About Hydraulic Safety Insight



Looking for great safety suggestions? Visit our Resource Section to get a better understanding of hydraulic and mechanical safety insights on what to look for when working around hydraulics.

Ordering Information

Cyl. Cap.	Stroke (mm)	Order No.	Oil Cap. (cm ³)	A	B	C	D	E	G	H	K	P	Q	Bore Dia. (mm)	Cylinder Effective Area (cm ²)	Metric Tons at 700 (bar)	Prod. Wt. (kg)
				Re-tracted Height (mm)	Ex-tended Height (mm)	Outside Dia. (mm)	Collar Thread (in.)	Collar Thread Length (mm)	Cyl. Top to Port (mm)	Piston Rod Dia. (mm)	Piston Rod Protru-sion (mm)	Piston Rod Thread (NPT) (in.)	Internal Base Thread (NPSM) (in.)				
2 (ton)	127,0	RP25	45	242,9	379,9	44,5	1 1/2 - 16	25,4	42,9	19,1	25,4	3/4 - 14	3/4 - 14	28,6	3,5	2,5	1,8
5	139,7	RP55	102	301,6	441,3	57,2	2 1/4 - 14	25,4	42,9	30,2	34,9	1 1/4 - 11 1/2	1 1/4 - 11 1/2	42,9	7,3	5,1	5,0