

LOCKING COLLAR

RL Series STEEL

55 -565 Ton

Single- Acting, Load Return



R556L

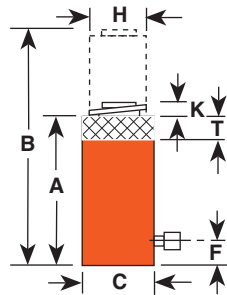
CYLINDERS

POSITIVE MECHANICAL LOCK TO SUPPORT LOAD.

- Supports lifted load for extended periods of time with hydraulic pressure released.
- Visible indicator band alerts when stroke limit is reached; overflow port ("weep hole") stroke limiter prevents piston from being overextended.
- All cylinders feature coated pistons to resist corrosion and abrasion.

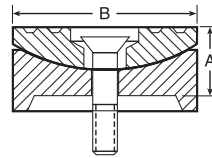


Locking collar feature permits non-hydraulic support of load.



SWIVEL CAPS For use with "RL" cylinders reduce the effects of off center loading.

Tilts up to 5 degrees. Radial grooves on top of cap reduce load slippage.



A (in.)	B (in.)	Use with Cyl. No.	Swivel Cap Order No.	Wt. (lbs.)
1	2 ¹³ / ₁₆	55-100 ton	420866	1.8
1 ¹ / ₂	5 ¹ / ₈	150-200 ton	420867	8.8
1 ³ / ₄	5 ⁷ / ₈	280 ton	420868	13.5
2 ³ / ₄	7 ¹¹ / ₁₆	355 ton	420869	37
3 ¹ / ₈	8 ⁷ / ₈	430 ton	420870	52
3 ⁵ / ₈	9 ⁷ / ₈	565 ton	420871	78

Cyl. Cap. (tons)	Stroke (in.)	Order No.	Oil Cap. (cu. in.)	A	B	C	F	H	K	T	Cylinder Bore Dia. (in.)	Internal Effective Area (sq. in.)	Internal Pressure at Cap. (psi)	Tons at 10,000 psi	Product Wt. (lbs.)
				Retracted Height (in.)	Extended Height (in.)	Outside Dia. (in.)	Base to Port (in.)	Piston Rod Dia. (in.)	Piston Rod Protrusion (in.)	Nut Thickness (in.)					
55	2	R552L	22.10	6 ⁵ / ₈	8 ³ / ₈	4 ¹⁵ / ₁₆	1	3 ³ / ₄	1 ¹ / ₈	1 ⁷ / ₁₆	3 ³ / ₄	11.04	9,964	55.2	33.7
55	6	R556L	66.30	10 ³ / ₈	16 ³ / ₈	4 ¹⁵ / ₁₆	1	3 ³ / ₄	1 ¹ / ₈	1 ⁷ / ₁₆	3 ³ / ₄	11.04	9,964	55.2	58.0
55	10	R5510L	110.40	14 ³ / ₈	24 ³ / ₈	4 ¹⁵ / ₁₆	1	3 ³ / ₄	1 ¹ / ₈	1 ⁷ / ₁₆	3 ³ / ₄	11.04	9,964	55.2	80.0
100	2	R1002L	41.30	7 ¹ / ₄	9 ¹ / ₄	6 ¹ / ₂	1	5 ¹ / ₈	1 ¹ / ₈	1 ³ / ₄	5 ¹ / ₈	20.63	9,695	103.0	66.0
100	6	R1006L	123.80	11 ¹ / ₄	17 ¹ / ₄	6 ¹ / ₂	1	5 ¹ / ₈	1 ¹ / ₈	1 ³ / ₄	5 ¹ / ₈	20.63	9,695	103.0	103.0
100	10	R10010L	206.30	15 ¹ / ₄	25 ¹ / ₄	6 ¹ / ₂	1	5 ¹ / ₈	1 ¹ / ₈	1 ³ / ₄	5 ¹ / ₈	20.63	9,695	103.0	142.0
150	2	R1502L	61.40	8 ¹ / ₈	10 ¹ / ₈	8 ¹ / ₁₆	1 ¹ / ₄	6 ¹ / ₄	1 ¹ / ₈	1 ³ / ₄	6 ¹ / ₄	30.68	9,778	153.4	117.0
150	6	R1506L	184.10	12 ¹ / ₈	18 ¹ / ₈	8 ¹ / ₁₆	1 ¹ / ₄	6 ¹ / ₄	1 ¹ / ₈	1 ³ / ₄	6 ¹ / ₄	30.68	9,778	153.4	177.0
200	2	R2002L	82.60	9 ¹ / ₂	11 ¹ / ₂	9 ¹ / ₄	1 ⁵ / ₈	7 ¹ / ₄	1 ¹ / ₈	2	7 ¹ / ₄	41.28	9,690	206.4	183.0
200	6	R2006L	247.70	13 ¹ / ₂	19 ¹ / ₂	9 ¹ / ₄	1 ⁵ / ₈	7 ¹ / ₄	1 ¹ / ₈	2	7 ¹ / ₄	41.28	9,690	206.4	259.0
280	2	R2802L	113.50	9 ³ / ₄	11 ³ / ₄	10 ⁷ / ₈	1 ⁵ / ₈	8 ¹ / ₂	1 ¹ / ₈	2 ¹ / ₄	8 ¹ / ₂	56.74	9,870	283.7	261.0
280	6	R2806L	340.40	13 ³ / ₄	19 ³ / ₄	10 ⁷ / ₈	1 ⁵ / ₈	8 ¹ / ₂	1 ¹ / ₈	2 ¹ / ₄	8 ¹ / ₂	56.74	9,870	283.7	359.0
280	10	R28010L	567.40	17 ³ / ₄	27 ³ / ₄	10 ⁷ / ₈	1 ⁵ / ₈	8 ¹ / ₂	1 ¹ / ₈	2 ¹ / ₄	8 ¹ / ₂	56.74	9,870	283.7	459.0
355	2	R3552L	141.80	11 ¹ / ₂	13 ¹ / ₂	11 ³ / ₄	2 ¹ / ₈	9 ¹ / ₂	1 ¹ / ₈	2 ³ / ₈	9 ¹ / ₂	70.88	10,017	354.4	381.0
355	6	R3556L	425.30	15 ¹ / ₂	21 ¹ / ₂	11 ³ / ₄	2 ¹ / ₈	9 ¹ / ₂	1 ¹ / ₈	2 ³ / ₈	9 ¹ / ₂	70.88	10,017	354.4	512.0
430	2	R4302L	173.20	13 ¹ / ₈	15 ¹ / ₈	13	2 ¹ / ₂	10 ¹ / ₂	1 ¹ / ₈	2 ³ / ₄	10 ¹ / ₂	86.59	9,932	433.0	556.0
430	6	R4306L	519.50	17 ¹ / ₈	23 ¹ / ₈	13	2 ¹ / ₂	10 ¹ / ₂	1 ¹ / ₈	2 ³ / ₄	10 ¹ / ₂	86.59	9,932	433.0	725.0
430	10	R43010L	865.90	21 ¹ / ₈	31 ¹ / ₈	13	2 ¹ / ₂	10 ¹ / ₂	1 ¹ / ₈	2 ³ / ₄	10 ¹ / ₂	86.59	9,932	433.0	894.0
565	2	R5652L	226.20	14 ⁵ / ₈	16 ⁵ / ₈	14 ⁷ / ₈	2 ³ / ₄	12	1 ¹ / ₈	3 ¹ / ₈	12	113.10	9,991	565.5	811.0
565	6	R5656L	678.60	18 ⁵ / ₈	24 ⁵ / ₈	14 ⁷ / ₈	2 ³ / ₄	12	1 ¹ / ₈	3 ¹ / ₈	12	113.10	9,991	565.5	1031.0
565	10	R56510L	1131.0	22 ⁵ / ₈	32 ⁵ / ₈	14 ⁷ / ₈	2 ³ / ₄	12	1 ¹ / ₈	3 ¹ / ₈	12	113.10	9,991	565.5	1251.0

•NOTE: Supported loads not to exceed the rated capacity of the cylinders. Not intended to support additional dynamic loads, such as those applied by moving vehicles.