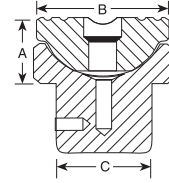
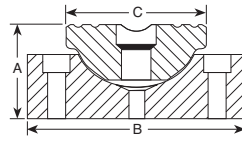


ACCESSORIES

Swivel Caps Center Hole Accessories



CYLINDERS

| SWIVEL CAPS FOR "RSS", | | | | | |
|------------------------|-----------------------------|------------|---------------------------------|---------------------------------|---------------------------------|
| Use with Cyl. No. | Swivel Cap Order No. | Wt. (lbs.) | A (in.) | B (in.) | C (in.) |
| RSS101 | 350320 | 0.5 | 1 | 1 ⁷ / ₁₆ | 1 ⁷ / ₁₆ |
| RSS202 | 350321 | 1.3 | 1 ³ / ₈ | 2 ¹ / ₈ | 2 ¹ / ₈ |
| RSS302 | 350322 | 1.6 | 1 ³ / ₈ | 2 ¹ / ₂ | 2 ¹ / ₈ |
| RSS502 | 350331 | 2.7 | 1 ⁷ / ₁₆ | 3 ¹ / ₄ | 2 ¹ / ₈ |
| RSS1002 | 350332 | 6.6 | 1 ¹³ / ₁₆ | 4 ³ / ₈ | 3 ³ / ₈ |
| "RA" CYLINDERS | | | | | |
| Tonnage | Swivel Cap Order No. | | | | |
| 55 | 350376 | 2 | 1 ¹ / ₄ | 2 ¹³ / ₁₆ | 2 ¹³ / ₁₆ |
| 100 | 350984 | 5.6 | 1 ¹⁵ / ₁₆ | 3 ¹ / ₈ | 3 ³ / ₄ |

| SWIVEL CAPS FOR "RD" CYLINDERS | | | | | |
|--------------------------------|----------------------|------------------|---------------------------------|--------------------------------|---------------------------------|
| Cylinder Tonnage | Swivel Cap Order No. | Prod. Wt. (lbs.) | A (in.) | B (in.) | C (in.) |
| 10 | 350144 | 0.8 | 7 ⁷ / ₈ | 1 ⁷ / ₁₆ | 5 ⁵ / ₆₄ |
| 25 | 350145 | 1.3 | 1 ¹ / ₈ | 2 ¹ / ₈ | 1 ⁷ / ₁₆ |
| 55 | 351325 | 4.2 | 2 ⁷ / ₁₆ | 2 ¹ / ₂ | 1 ³⁵ / ₆₄ |
| 100 | 351324 | 11.2 | 2 ⁶¹ / ₆₄ | 3 ³ / ₄ | 2 ²¹ / ₃₂ |
| 150/200 | 351334 | 12.8 | 2 ⁵ / ₈ | 4 ³ / ₈ | 3 ¹ / ₁₆ |

| For use with "RC" cylinders | | SWIVEL CAPS Reduce the effects of off center loading. Tilts up to 5 degrees. Radial grooves on top of cap reduce load slippage. | | | | For use with "RL" cylinders | | | |
|-----------------------------|----------------------|--|-------------------------------|---------------------------------|-------------------------------|---------------------------------|-------------------|----------------------|------------|
| Use with Cyl. No. | Swivel Cap Order No. | Wt. (lbs.) | A (in.) | B (in.) | A (in.) | B (in.) | Use with Cyl. No. | Swivel Cap Order No. | Wt. (lbs.) |
| 150-200 ton | 420867 | 8.8 | 1 ¹ / ₂ | 5 ¹ / ₈ | 1 | 2 ¹³ / ₁₆ | 55-100 ton | 420866 | 1.8 |
| 280 ton | 420868 | 13.5 | 1 ³ / ₄ | 5 ⁷ / ₈ | 1 ¹ / ₂ | 5 ¹ / ₈ | 150-200 ton | 420867 | 8.8 |
| 355 ton | 420869 | 37 | 2 ³ / ₄ | 7 ¹¹ / ₁₆ | 1 ³ / ₄ | 5 ⁷ / ₈ | 280 ton | 420868 | 13.5 |
| 430 ton | 420870 | 52 | 3 ¹ / ₈ | 8 ⁷ / ₈ | 2 ³ / ₄ | 7 ¹¹ / ₁₆ | 355 ton | 420869 | 37 |
| 565 ton | 420871 | 78 | 3 ⁵ / ₈ | 9 ⁷ / ₈ | 3 ¹ / ₈ | 8 ⁷ / ₈ | 430 ton | 420870 | 52 |
| | | | | | 3 ⁵ / ₈ | 9 ⁷ / ₈ | 565 ton | 420871 | 78 |

A notch across the face of each cap helps to keep protruding or round shaped loads centered.

| "CENTER-HOLE" CYLINDER ACCESSORIES | | | | |
|------------------------------------|---|------------------------------|-------------------------------------|---------------|
| To use with Cyl. No. | RT172, RH203 | RT302, RH302 RH303, RH306 | RT503, RH503, RH603 RH605, RH606 | RT1004 |
| Order Set No. | RHA20 | RHA30 | RHA50 | RHA100 |
| 1 Speed Crank | 24814 | 27198 | 29595 | 303785 |
| 2 Speed Nut | 302482 | 302483 | 33439 | 34136 |
| 3 Adjusting Screw | 32118 | 34758 | 32698 | 32699 |
| 4 Threaded Insert | Order threaded insert for RH series cylinders with the accessory set (See page 39). Threaded insert supplied with RT series cylinders. | | | |
| 5 Pushing Adapter | 201923 | 34510 | 34755 | -- |
| 6 Pushing Adapter | 201454 | 34511 | 34756 | -- |
| 7 Jack Screw | 24813 | 25931 | 32701 | 32702 |
| 8 Cap | 28228 | 28229 | 28230 | -- |

