

AIR PUMP

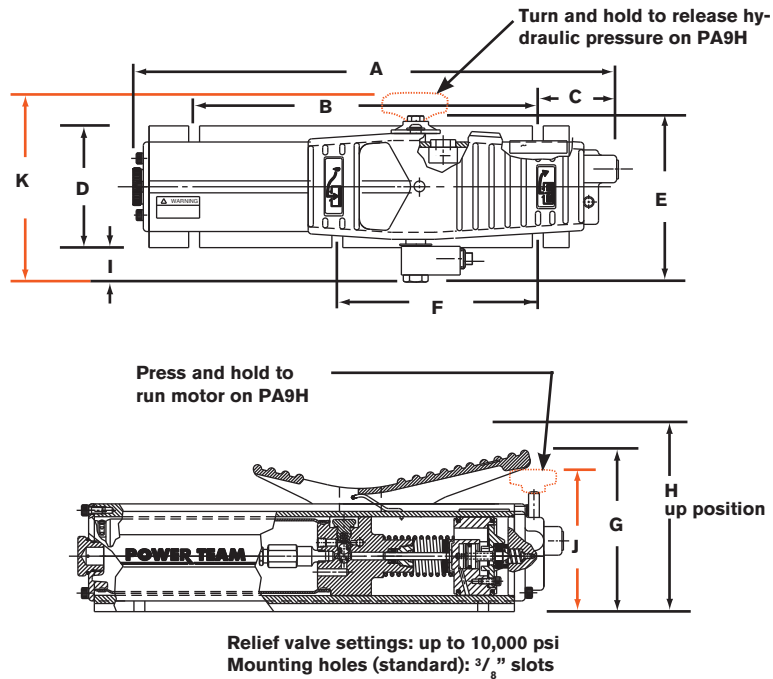
Hydraulic PA9 Series

9 cu. in./min.
Single-Acting

IDEAL FOR POWER-
ING SINGLE-ACTING
CYLINDERS AND PORTA-
BLE HYDRAULIC TOOLS.

- Easier to operate than a hand pump, giving you the speed you need at an affordable price.
- Easy and economical to service; not a “throw away” unit.
- Unique bladder design for all-position operation and storage.
- Operates on 40-120 psi shop air, at 20 cfm.
- Hard-coat anodized aluminum housing.
- Oil filler with integral safety relief minimizes chance of damage to reservoir bladder if overfilling occurs.

PA9 Foot Control



Pump No.	A (in.)	B (in.)	C (in.)	D (in.)	E (in.)	F (in.)	G (in.)	H (in.)	I (in.)	J (in.)	K (in.)
PA9	16 ¹⁵ / ₁₆	12	2 ¹³ / ₁₆	4 ¹ / ₄	5 ⁹ / ₁₆	7	5 ⁵ / ₈	7	1 ¹ / ₈	—	—
PA9H	16 ¹⁵ / ₁₆	12	2 ¹³ / ₁₆	4 ¹ / ₄	—	7	—	7	1 ¹ / ₈	4 ¹³ / ₁₆	6 ¹¹ / ₁₆



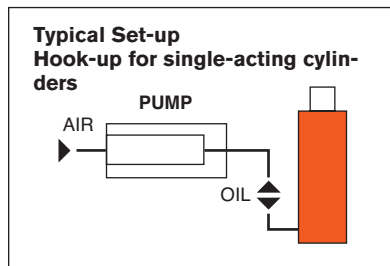
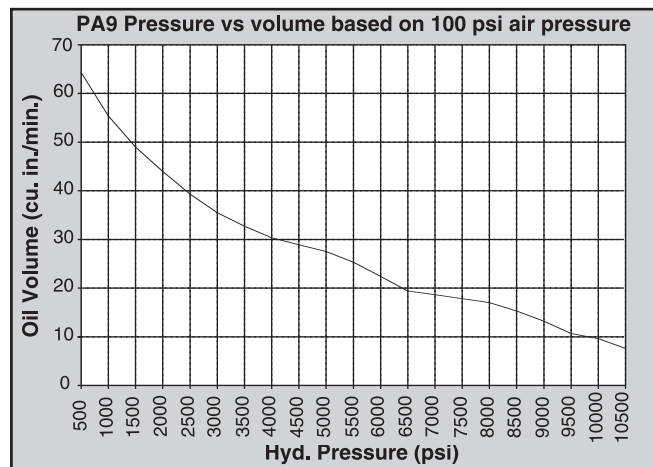
PA9
Foot Control



PA9H
Hand Control



PA9H Hand Control Pump as used
in a straightening press.



For Use with Cyl. Type	Order No.	Air Supply	Reservoir		Oil Port (in.)	Max. Pressure	Prod. Wt. (lbs.)
		Req'd (psi)	Cap. (cu. in.)	Usable (cu. in.)		Output (psi)	
Single-Acting	PA9	40-120	35	33.5	$\frac{3}{8}$ NPTF	10,000	15
Single-Acting	PA9H	40-120	35	33.5	$\frac{3}{8}$ NPTF	10,000	15